



**THE DATASHEET OF
TPX2012LL90R1525A**



Description: 2012 1.57G&2.4G&5GHz Triplexer

PART NUMBER: TPX2012LL90R1525A

Features:

- Compact size : 2.0x1.2x0.9mm
- RoHS compliant

Applications:

- WLAN, 802.11a/b/g/n
- ISM Band
- GPS

ELECTRICAL SPECIFICATIONS

DESCRIPTION	VALUE		
	Low Band	Middle Band	High Band
Pass Band	1570~1610MHz	2400~2500MHz	4900~5950MHz
Insertion loss	0.8dB (Max) at 25°C	0.7dB (Max) at 25°C	0.8dB (Max) at 25°C
V.S.W.R /Return-Loss	2.0(Max)/10.0dB(Min)	2.0(Max) /10.0dB(Min)	1.6(Max) /13.0dB(Min)
Attenuation	20dB(Min).@2.4~2.5GHz 20dB(Min).@4.8~6.0GHz	17.5dB(Min).@4.8~5.0GHz 10dB(Min).@7.2~7.5GHz 10dB(Min).@9.6~10.0GHz	27dB(Min).@0.86~0.96GHz 25dB(Min).@1.545~1.605GHz 25dB(Min).@1.71~1.99GHz 30dB(Min).@2.17GHz 8dB(Min).@8.1GHz 15dB(Min).@8.82~9.8GHz 27dB(Min).@9.8~10.76GHz 25dB(Min).@10.76~11.8GHz
Isolation	Middle Band to High Band: 17dB(Min). @4.8~5.0GHz Middle Band to Low Band: 20dB(Min).@1.559~1.606GHz High Band to Low Band: 25dB(Min). @1.559~1.606GHz		
Operating Temperature	-40 ~ 85°C		
Dimension	2.0 x 1.2 x 0.9mm		

In the effort to improve our products, we reserve the right to make changes judged to be necessary.

CONFIDENTIAL AND PROPRIETARY INFORMATION

This document contains confidential and proprietary information of Pulse Electronics, Inc. (Pulse) and is protected by copyright, trade secret and other state and federal laws. Its receipt or possession does not convey any rights to reproduce, disclose its contents, or to manufacture, use or sell anything it may describe. Reproduction, disclosure or use without specific written authorization of Pulse is strictly forbidden.

For more information:



Pulse Worldwide Headquarters
15255 Innovation Drive #100
San Diego, CA 92128
USA
Tel:1-858-674-8100

Pulse/Larsen Antennas
18110 SE 34th St Bldg 2 Suite 250
Vancouver, WA 98683
USA
Tel: 1-360-944-7551

Europe Headquarters
Pulse GmbH & Do, KG
Zeppelinstrasse 15
Herrenberg, Germany
Tel: 49 7032 7806 0

Pulse (Suzhou) Wireless Products Co, Inc.
99 Huo Ju Road(#29 Bldg,4th Phase
Suzhou New District
Jiangsu Province, Suzhou 215009 PR China
Tel: 86 512 6807 9998

Description: 2012 1.57G&2.4G&5GHz Triplexer

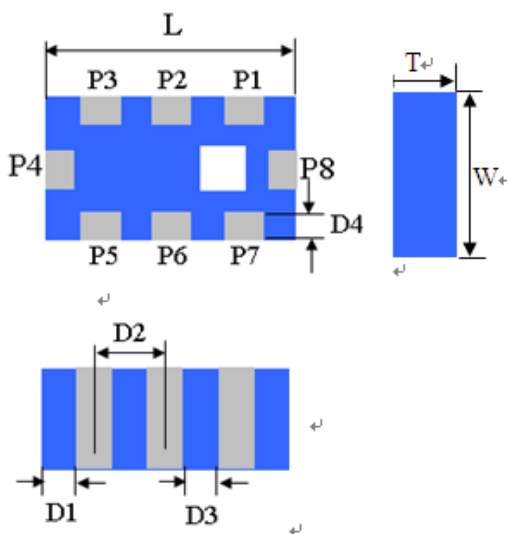
PART NUMBER: TPX2012LL90R1525A

MECHANICAL DIMENSION

Outline

Termination

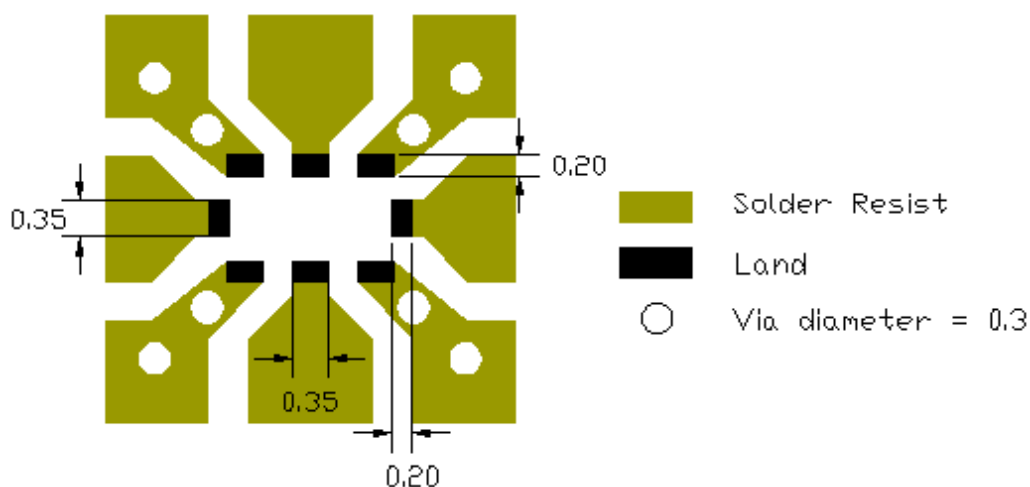
Mechanical



Terminal name	Dimension
P1	GND
P2	Common
P3	GND
P4	Middle band
P5	GND
P6	High band
P7	GND
P8	Low band

Dimension	Dimension
L (mm)	2.00±0.15
W (mm)	1.25±0.15
T (mm)	0.90±0.15
P1 (mm)	0.40±0.15
P2 (mm)	0.40±0.15
P3 (mm)	0.40±0.15
P4 (mm)	0.50±0.15
P5 (mm)	0.40±0.15
P6 (mm)	0.40±0.15
P7 (mm)	0.40±0.15
P8 (mm)	0.50±0.15
D1 (mm)	0.2±0.15
D2 (mm)	0.65±0.15
D3 (mm)	0.35±0.15
D4 (mm)	0.3±0.15

Reference design of EVB



Line width should be designed to match 50Ω characteristic impedance, depending on PCB material and thickness.

In the effort to improve our products, we reserve the right to make changes judged to be necessary.

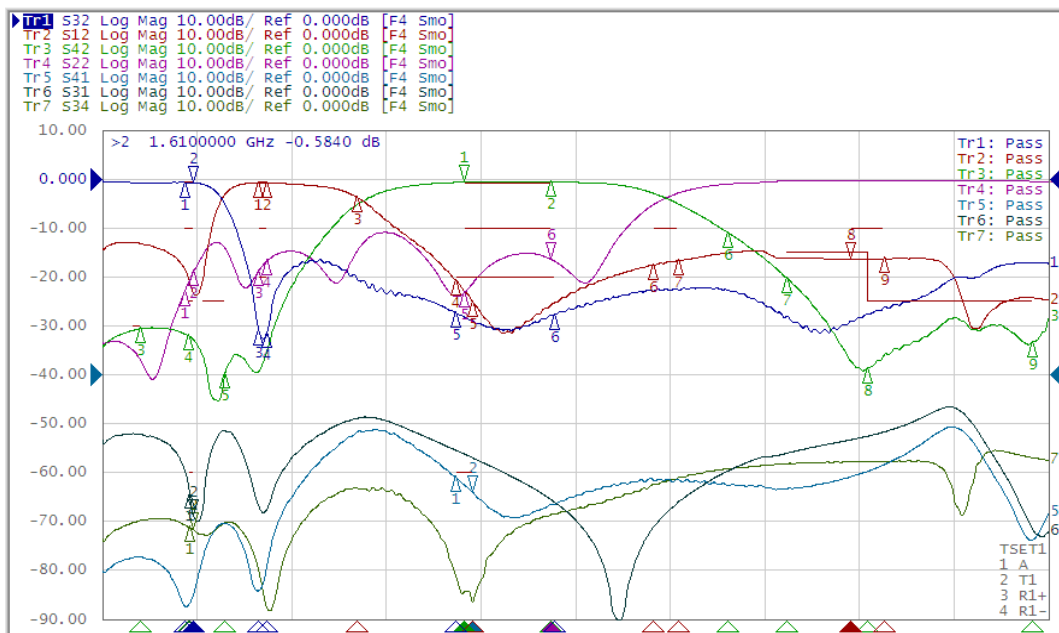
CONFIDENTIAL AND PROPRIETARY INFORMATION

This document contains confidential and proprietary information of Pulse Electronics, Inc. (Pulse) and is protected by copyright, trade secret and other state and federal laws. Its receipt or possession does not convey any rights to reproduce, disclose its contents, or to manufacture, use or sell anything it may describe. Reproduction, disclosure or use without specific written authorization of Pulse is strictly forbidden.

Description: 2012 1.57G&2.4G&5GHz Triplexer

PART NUMBER: TPX2012LL90R1525A

ELECTRICAL PERFORMANCES



- Measured on Agilent E5071C Network Analyzer
- Common port: Port 2 (Return loss S22)
- Low band port: Port 3 (Low band insertion loss S32)
- Middle band port Port1(Middle band insertion loss S12)
- High band port: Port 4 (High band insertion loss S42)

Ch1	Tr1	S32	1	1.5000000	GHZ	-0.5648	dB	Ch1	Tr4	S22	1	1.5000000	GHZ	-22.734	dB
Ch1	Tr1	S32	>2	1.6100000	GHZ	-0.5840	dB	Ch1	Tr4	S22	2	1.6100000	GHZ	-18.596	dB
Ch1	Tr1	S32	3	2.4000000	GHZ	-30.695	dB	Ch1	Tr4	S22	3	2.4000000	GHZ	-18.478	dB
Ch1	Tr1	S32	4	2.5000000	GHZ	-31.145	dB	Ch1	Tr4	S22	4	2.5000000	GHZ	-16.460	dB
Ch1	Tr1	S32	5	4.8000000	GHZ	-27.212	dB	Ch1	Tr4	S22	5	4.9000000	GHZ	-22.957	dB
Ch1	Tr1	S32	6	6.0000000	GHZ	-27.493	dB	Ch1	Tr4	S22	6	5.9500000	GHZ	-16.136	dB
Ch1	Tr2	S12	1	2.4000000	GHZ	-0.5519	dB	Ch1	Tr5	S41	1	4.8000000	GHZ	-20.778	dB
Ch1	Tr2	S12	2	2.5000000	GHZ	-0.5660	dB	Ch1	Tr5	S41	2	5.0000000	GHZ	-23.837	dB
Ch1	Tr2	S12	3	3.6000000	GHZ	-3.6146	dB	Ch1	Tr6	S31	1	1.5590000	GHZ	-24.081	dB
Ch1	Tr2	S12	4	4.8000000	GHZ	-20.568	dB	Ch1	Tr6	S31	2	1.6060000	GHZ	-28.696	dB
Ch1	Tr2	S12	5	5.0000000	GHZ	-24.979	dB	Ch1	Tr7	S34	1	1.5590000	GHZ	-31.004	dB
Ch1	Tr2	S12	6	7.2000000	GHZ	-17.350	dB	Ch1	Tr7	S34	2	1.6060000	GHZ	-31.464	dB
Ch1	Tr2	S12	7	7.5000000	GHZ	-16.398	dB								
Ch1	Tr2	S12	8	9.6000000	GHZ	-16.105	dB								
Ch1	Tr2	S12	9	10.0000000	GHZ	-16.033	dB								
Ch1	Tr3	S42	1	4.9000000	GHZ	-0.6015	dB								
Ch1	Tr3	S42	2	5.9500000	GHZ	-0.6687	dB								
Ch1	Tr3	S42	3	960.00000	MHZ	-30.368	dB								
Ch1	Tr3	S42	4	1.5450000	GHZ	-31.794	dB								
Ch1	Tr3	S42	5	1.9900000	GHZ	-39.506	dB								
Ch1	Tr3	S42	6	8.1000000	GHZ	-10.685	dB								
Ch1	Tr3	S42	7	8.8200000	GHZ	-20.010	dB								
Ch1	Tr3	S42	8	9.8000000	GHZ	-38.457	dB								
Ch1	Tr3	S42	9	11.8000000	GHZ	-33.135	dB								

Frequency Characteristics

In the effort to improve our products, we reserve the right to make changes judged to be necessary.

CONFIDENTIAL AND PROPRIETARY INFORMATION

This document contains confidential and proprietary information of Pulse Electronics, Inc. (Pulse) and is protected by copyright, trade secret and other state and federal laws. Its receipt or possession does not convey any rights to reproduce, disclose its contents, or to manufacture, use or sell anything it may describe. Reproduction, disclosure or use without specific written authorization of Pulse is strictly forbidden.

Description: 2012 1.57G&2.4G&5GHz Triplexer

PART NUMBER: TPX2012LL90R1525A

REVISION HISTORY

Revision	Date	Description
Version 1	Set. 30, 2020	- New issue

Looking for pricing, stock, or lifecycle information?

Click below to explore more details on WIN SOURCE:

 [View TPX2012LL90R1525A on WIN SOURCE](#)

 [Pulse Information](#)

Optimize Your Supply Chain with WIN SOURCE Solutions

-  Global Sourcing Solution
-  Obsolete Management
-  Cost Control Management
-  Shortage Management
-  Alternative Solution
-  Excess Inventory Management