



**THE DATASHEET OF
B82470A1472M**





Size 4,8 x 4,8 x 1,2 mm
Rated inductance 1 μ H .. 47 μ H

Construction

- Ferrite core
- Plastic protection case
- Winding: enamel copper wire
- Winding welded to terminals

Features

- Low profile
- High rated current
- Low DC resistance
- Suitable for lead free reflow soldering

Applications

- Filtering of supply voltages
- Coupling, decoupling
- DC/DC converters

Terminals

- Lead free tinned

Marking

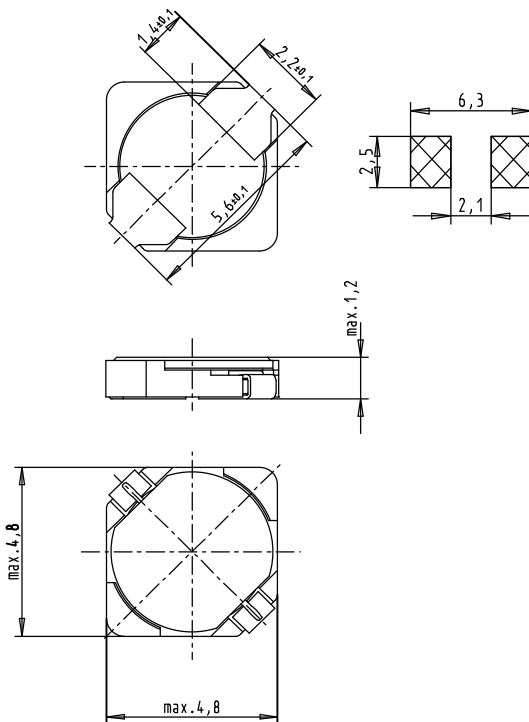
Marking on component:
Manufacturer, L-value (coded in μ H), date code
Minimum marking on reel:
Manufacturer, part number, ordering code,
L value and tolerance
quantity, date of packing

Delivery mode

Blister tape 12 mm, reel packing \varnothing 180 mm
packaging quantity 1000 pcs per reel


General technical data

Rated inductance L_R	Measured with HP 4294A , measuring voltage 100 mV
Rated current I_R	Maximum permissible DC with temperature increase of ≤ 40 K at ambient temperature of $85\text{ }^\circ\text{C}$ or inductance decrease $\Delta L/L_0 \leq 10\%$
Climatic category	In accordance with IEC 60068-1 55/125/56 ($-55\text{ }^\circ\text{C}$ / $+125\text{ }^\circ\text{C}$ / 56 days damp heat test)
Solderability	3 s, $235\text{ }^\circ\text{C}$, wetting $> 90\%$
DC resistance R_{\max}	Measured at $20\text{ }^\circ\text{C}$ ambient temperature
Weight	Approx. 0,2 g

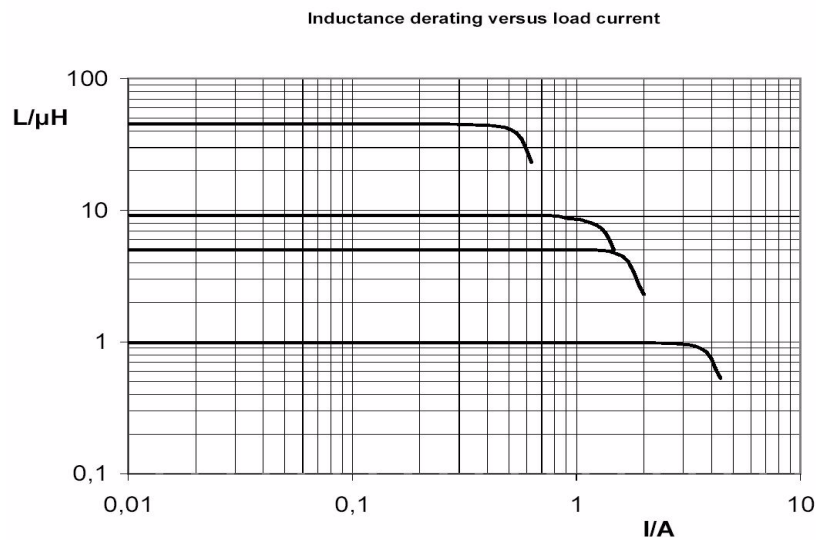
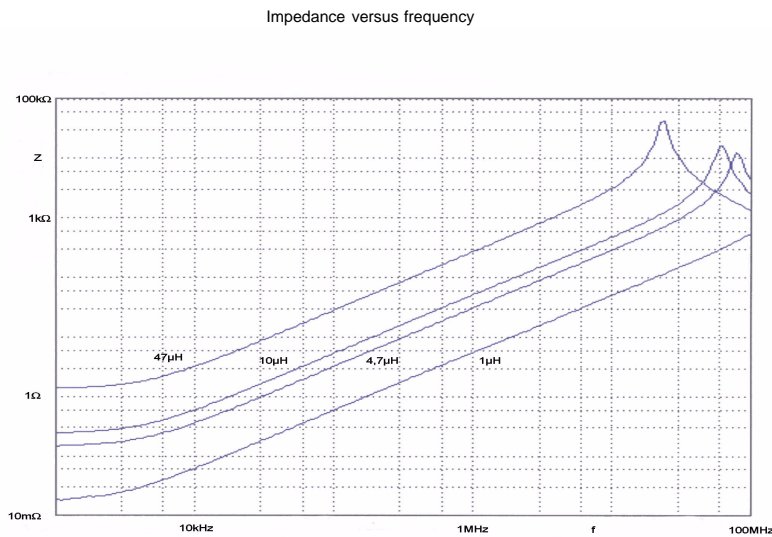
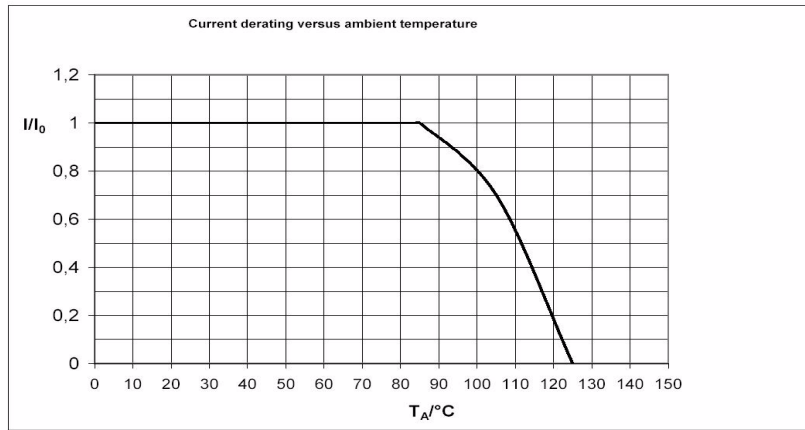
Dimensional drawing and layout recommendation



Characteristics and ordering codes

L_R μH	f_L MHz	Tolerance	I_R A	R_{\max} Ω	Ordering code
1	0,1	20 %	1,80	0,045	B82470-A1102-M
1,2	0,1	20 %	1,60	0,060	B82470-A1122-M
2,2	0,1	20 %	1,35	0,090	B82470-A1222-M
3,3	0,1	20 %	1,10	0,120	B82470-A1332-M
4,7	0,1	20 %	0,95	0,190	B82470-A1472-M
6,8	0,1	20 %	0,85	0,228	B82470-A1682-M
10	0,1	20 %	0,75	0,305	B82470-A1103-M
15	0,1	20 %	0,58	0,480	B82470-A1153-M
22	0,1	20 %	0,48	0,690	B82470-A1223-M
33	0,1	20 %	0,38	1,10	B82470-A1333-M
47	0,1	20 %	0,32	1,50	B82470-A1473-M





Typical diagrams:



Looking for pricing, stock, or lifecycle information?

Click below to explore more details on WIN SOURCE:

-  [View B82470A1472M on WIN SOURCE](#)
-  [EPCOS \(TDK\) Information](#)

Optimize Your Supply Chain with WIN SOURCE Solutions

-  Global Sourcing Solution
-  Obsolete Management
-  Cost Control Management
-  Shortage Management
-  Alternative Solution
-  Excess Inventory Management