



THE DATASHEET OF B7707





SAW Components

Data Sheet B7707





SAW Components

B7707

Low-Loss Filter for Mobile Communication

942,50 MHz

Data Sheet



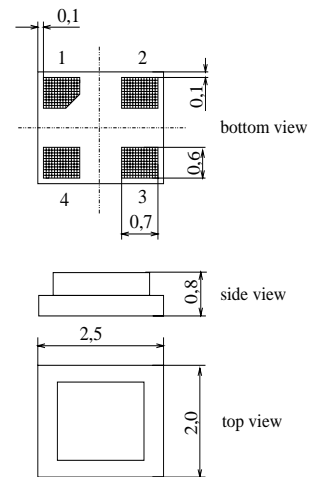
Chip sized SAW package DCS4C

Features

- Low-loss RF filter for mobile telephone EGSM systems, receive path
- Low amplitude ripple
- Usable passband 35 MHz
- No matching network required for operation at 50 Ω
- Suitable for GPRS class 1 to 12
- Package for **Surface Mounted Technology (SMT)**

Terminals

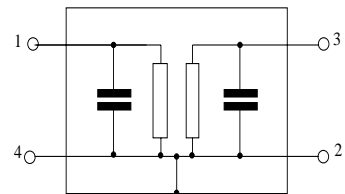
- Ni, gold-plated



Dimensions in mm, approx. weight 0,015g

Pin configuration

- 1 Input
- 3 Output
- 2,4 Ground



Type	Ordering code	Marking and Package according to	Packing according to
B7707	B39941-B7707-C510	C61157-A7-A80	F61074-V8153-Z000

Electrostatic Sensitive Device (ESD)

Maximum ratings

Operable temperature range	T	- 30 / + 85	°C	peak power of GSM signal, duty cycle 4:8
Storage temperature range	T_{stg}	- 40 / + 85	°C	
DC voltage	V_{DC}	3	V	
Input power at GSM850, GSM900, GSM1800 and GSM1900 Tx bands	P_{IN}	15	dBm	



SAW Components

B7707

Low-Loss Filter for Mobile Communication

942,50 MHz

Data Sheet



Characteristics

Operating temperature range: $T = 25 \pm 2 \text{ }^\circ\text{C}$
 Terminating source impedance: $Z_S = 50 \text{ } \Omega$
 Terminating load impedance: $Z_L = 50 \text{ } \Omega$

		min.	typ.	max.	
Center frequency	f_C	—	942,5	—	MHz
Maximum insertion attenuation	α_{\max}				
925,0 ... 960,0 MHz		—	2,8	3,3	dB
Amplitude ripple (p-p)	$\Delta\alpha$				
925,0 ... 960,0 MHz		—	1,0	1,6	dB
Input VSWR					
925,0 ... 960,0 MHz		—	2,0	2,3	
Output VSWR					
925,0 ... 960,0 MHz		—	2,0	2,2	
Input return loss					
925,0 ... 960,0 MHz		8,0	9,0	—	dB
Input return loss phase					
1842,5 MHz		-150,0	-140,0	-130,0	°
Attenuation	α				
0,0 ... 750,0 MHz		50	66	—	dB
750,0 ... 800,0 MHz		46	69	—	dB
800,0 ... 880,0 MHz		45	54	—	dB
880,0 ... 905,0 MHz		31	60	—	dB
905,0 ... 915,0 MHz		17	33	—	dB
980,0 ... 982,0 MHz		23	26	—	dB
982,0 ... 1005,0 MHz		23	29	—	dB
1005,0 ... 1025,0 MHz		30	52	—	dB
1025,0 ... 1035,0 MHz		35	54	—	dB
1035,0 ... 1760,0 MHz		40	55	—	dB
1760,0 ... 3120,0 MHz		34	38	—	dB
3120,0 ... 4000,0 MHz		18	26	—	dB
4000,0 ... 6000,0 MHz		8	18	—	dB



Characteristics

Operating temperature range: $T = -20^{\circ}\text{C}$ to $+75^{\circ}\text{C}$
 Terminating source impedance: $Z_S = 50\ \Omega$
 Terminating load impedance: $Z_L = 50\ \Omega$

			min.	typ.	max.	
Center frequency	f_C		—	942,5	—	MHz
Maximum insertion attenuation	α_{\max}	925,0 ... 960,0 MHz	—	3,0	3,5	dB
Amplitude ripple (p-p)	$\Delta\alpha$	925,0 ... 960,0 MHz	—	1,2	1,8	dB
Input VSWR		925,0 ... 960,0 MHz	—	2,0	2,3	
Output VSWR		925,0 ... 960,0 MHz	—	2,0	2,2	
Input return loss		925,0 ... 960,0 MHz	8,0	9,0	—	dB
Input return loss phase		1842,5 MHz	-150,0	-140,0	-130,0	°
Attenuation	α					
		0,0 ... 750,0 MHz	50	66	—	dB
		750,0 ... 800,0 MHz	46	69	—	dB
		800,0 ... 880,0 MHz	45	54	—	dB
		880,0 ... 905,0 MHz	31	60	—	dB
		905,0 ... 915,0 MHz	17	24	—	dB
		980,0 ... 982,0 MHz	22	25	—	dB
		982,0 ... 1005,0 MHz	23	27	—	dB
		1005,0 ... 1025,0 MHz	30	52	—	dB
		1025,0 ... 1035,0 MHz	35	54	—	dB
		1035,0 ... 1760,0 MHz	40	55	—	dB
		1760,0 ... 3120,0 MHz	34	38	—	dB
		3120,0 ... 4000,0 MHz	18	26	—	dB
		4000,0 ... 6000,0 MHz	8	18	—	dB



SAW Components

B7707

Low-Loss Filter for Mobile Communication

942,50 MHz

Data Sheet



Characteristics

Operating temperature range: $T = -30^{\circ}\text{C}$ to $+80^{\circ}\text{C}$
 Terminating source impedance: $Z_S = 50\ \Omega$
 Terminating load impedance: $Z_L = 50\ \Omega$

			min.	typ.	max.	
Center frequency	f_C		—	942,5	—	MHz
Maximum insertion attenuation	α_{\max}	925,0 ... 960,0 MHz	—	3,0	4,0	dB
Amplitude ripple (p-p)	$\Delta\alpha$	925,0 ... 960,0 MHz	—	1,2	2,3	dB
Input VSWR		925,0 ... 960,0 MHz	—	2,0	2,3	
Output VSWR		925,0 ... 960,0 MHz	—	2,0	2,2	
Input return loss		925,0 ... 960,0 MHz	8,0	9,0	—	dB
Input return loss phase		1842,5 MHz	-150,0	-140,0	-130,0	°
Attenuation	α					
		0,0 ... 750,0 MHz	50	66	—	dB
		750,0 ... 800,0 MHz	46	69	—	dB
		800,0 ... 880,0 MHz	45	54	—	dB
		880,0 ... 905,0 MHz	31	60	—	dB
		905,0 ... 915,0 MHz	15	23	—	dB
		980,0 ... 982,0 MHz	21	24	—	dB
		982,0 ... 1005,0 MHz	23	27	—	dB
		1005,0 ... 1025,0 MHz	30	52	—	dB
		1025,0 ... 1035,0 MHz	35	54	—	dB
		1035,0 ... 1760,0 MHz	40	55	—	dB
		1760,0 ... 3120,0 MHz	34	38	—	dB
		3120,0 ... 4000,0 MHz	18	26	—	dB
		4000,0 ... 6000,0 MHz	8	18	—	dB



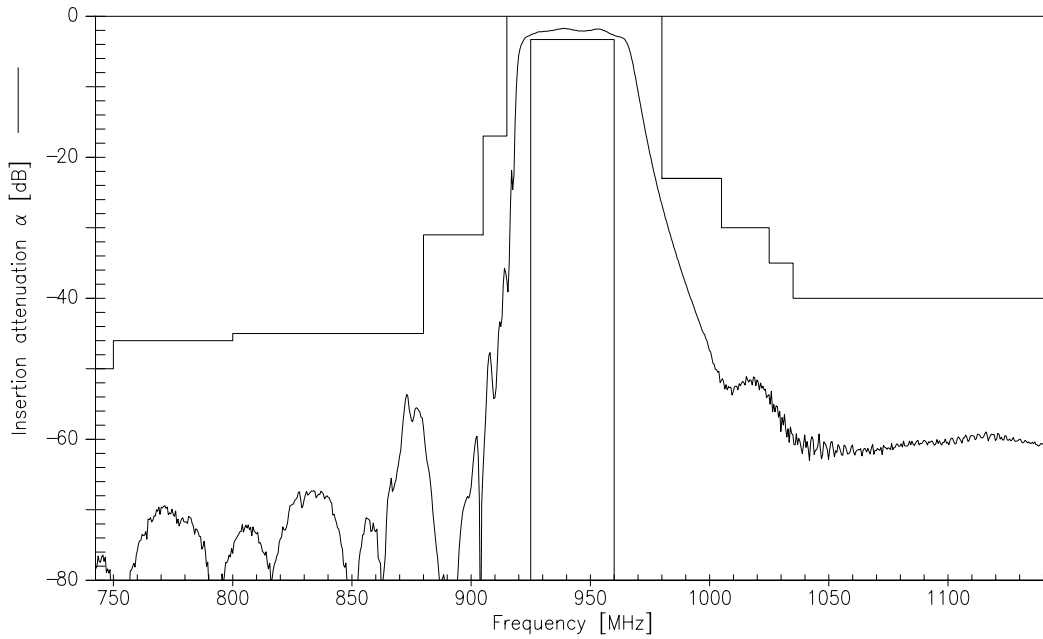
Characteristics

Operating temperature range: $T = -30^{\circ}\text{C}$ to $+85^{\circ}\text{C}$
 Terminating source impedance: $Z_S = 50\ \Omega$
 Terminating load impedance: $Z_L = 50\ \Omega$

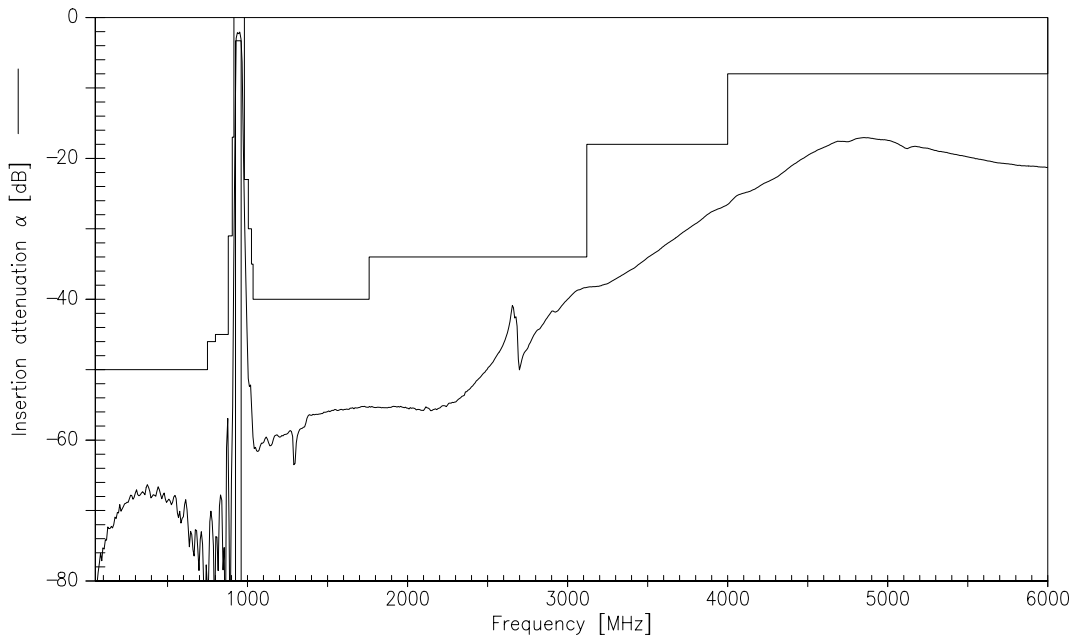
			min.	typ.	max.	
Center frequency	f_C		—	942,5	—	MHz
Maximum insertion attenuation	α_{\max}	925,0 ... 960,0 MHz	—	3,0	4,0	dB
Amplitude ripple (p-p)	$\Delta\alpha$	925,0 ... 960,0 MHz	—	1,2	2,3	dB
Input VSWR		925,0 ... 960,0 MHz	—	2,0	2,3	
Output VSWR		925,0 ... 960,0 MHz	—	2,0	2,2	
Input return loss		925,0 ... 960,0 MHz	8,0	9,0	—	dB
Input return loss phase		1842,5 MHz	-150,0	-140,0	-130,0	°
Attenuation	α					
		0,0 ... 750,0 MHz	50	66	—	dB
		750,0 ... 800,0 MHz	46	69	—	dB
		800,0 ... 880,0 MHz	45	54	—	dB
		880,0 ... 905,0 MHz	31	60	—	dB
		905,0 ... 915,0 MHz	12	22	—	dB
		980,0 ... 982,0 MHz	21	24	—	dB
		982,0 ... 1005,0 MHz	23	27	—	dB
		1005,0 ... 1025,0 MHz	30	52	—	dB
		1025,0 ... 1035,0 MHz	35	54	—	dB
		1035,0 ... 1760,0 MHz	40	55	—	dB
		1760,0 ... 3120,0 MHz	34	38	—	dB
		3120,0 ... 4000,0 MHz	18	26	—	dB
		4000,0 ... 6000,0 MHz	8	18	—	dB



Transfer function (+25 C specification)



Transfer function (wideband)





SAW Components

B7707

Low-Loss Filter for Mobile Communication

942,50 MHz

Data Sheet



Published by EPCOS AG

Surface Acoustic Wave Components Division, SAW MC WT

P.O. Box 80 17 09, 81617 Munich, GERMANY

© EPCOS AG 2002. Reproduction, publication and dissemination of this brochure and the information contained therein without EPCOS' prior express consent is prohibited.

Purchase orders are subject to the General Conditions for the Supply of Products and Services of the Electrical and Electronics Industry recommended by the ZVEI (German Electrical and Electronic Manufacturers' Association), unless otherwise agreed.



This brochure replaces the previous edition.

For questions on technology, prices and delivery please contact the Sales Offices of EPCOS AG or the international Representatives.

Due to technical requirements components may contain dangerous substances. For information on the type in question please also contact one of our Sales Offices.

Looking for pricing, stock, or lifecycle information?

Click below to explore more details on WIN SOURCE:

-  [View B7707 on WIN SOURCE](#)
-  [EPCOS \(TDK\) Information](#)

Optimize Your Supply Chain with WIN SOURCE Solutions

-  Global Sourcing Solution
-  Obsolete Management
-  Cost Control Management
-  Shortage Management
-  Alternative Solution
-  Excess Inventory Management