



SAW multimedia filters

Series/Type: X6941D

The following products presented in this data sheet are being withdrawn.

Ordering Code	Substitute Product	Date of Withdrawal	Deadline Last Orders	Last Shipments
B39440X6941N201		2011-01-14	2011-09-30	2012-09-30

For further information please contact your nearest EPCOS sales office, which will also support you in selecting a suitable substitute. The addresses of our worldwide sales network are presented at www.epcos.com/sales.

© EPCOS AG 2015. Reproduction, publication and dissemination of this publication, enclosures hereto and the information contained therein without EPCOS' prior express consent is prohibited.

EPCOS AG is a TDK Group Company.

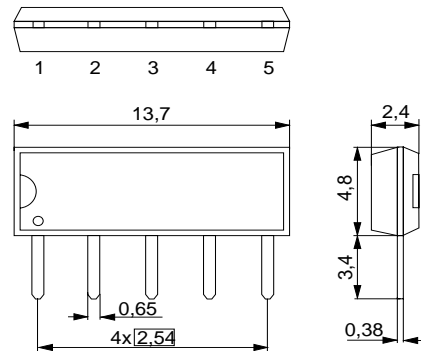
SAW Components
X 6941 D
Bandpass Filter
44,00 MHz
Data Sheet
Standard

 Duroplast package **SIP5D**

- HDTV

Features

- Constant group delay
- Optimized for cascade of two devices
- Optimized for balanced to balanced operation
- Standard IC package

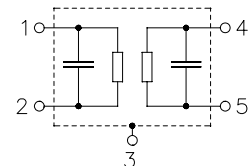

Terminals

- Tinned CuFe alloy

Dimensions in mm, approx. weight 0,5 g

Pin configuration

- 1 Input
- 2 Input
- 3 Chip carrier - ground
- 4 Output
- 5 Output



Type	Ordering code	Marking and package according to	Packing according to
X 6941 D	B39440-X6941-N201	C61157-A1-A21	F61074-V8049-Z000

Maximum ratings

Operable temperature range	T_A	-25/+65	°C	
Storage temperature range	T_{stg}	-40/+85	°C	
DC voltage	V_{DC}	5	V	between any terminals
AC voltage	V_{pp}	10	V	between any terminals

Data Sheet
Characteristics

Reference temperature:

$T_A = 25 \text{ }^\circ\text{C}$

Terminating source impedance:

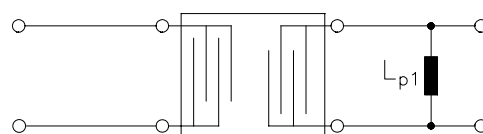
$Z_S = 50 \text{ } \Omega$

Terminating load impedance:

$Z_L = 2 \text{ k}\Omega \parallel 3 \text{ pF}$ and matching network

		min.	typ.	max.	
Insertion attenuation					
Reference level for the following data	44,00 MHz	18,5	20,0	21,5	dB
Amplitude ripple (p-p)					
	41,60 ... 46,40 MHz	—	0,4	—	dB
Relative attenuation					
	40,75 MHz	25,0	32,0	—	dB
	41,31 MHz	1,1	1,6	2,1	dB
	41,43 MHz	-0,4	0,3	1,0	dB
	41,60 MHz	-0,4	0,1	0,6	dB
	46,40 MHz	-0,4	0,1	0,6	dB
	46,57 MHz	0,1	0,6	1,1	dB
	46,69 MHz	1,5	2,0	2,5	dB
	47,25 MHz	25,0	36,0	—	dB
Lower sidelobe	35,00 ... 39,10 MHz	34,0	42,0	—	dB
	39,10 ... 40,35 MHz	27,0	32,0	—	dB
Upper sidelobe	47,65 ... 48,65 MHz	25,0	30,0	—	dB
	48,65 ... 55,00 MHz	32,0	37,0	—	dB
Reflected wave signal suppression					
1,5 μs ... 6,0 μs after main pulse (test pulse 250 ns, carrier frequency 44,00 MHz)		42,0	56,0	—	dB
Group delay ripple (p-p)					
	41,31 ... 46,69 MHz	—	30	80	ns
Impedance at 44,00 MHz					
Input: $Z_{IN} = R_{IN} \parallel C_{IN}$		—	1,9 \parallel 22,2	—	k Ω \parallel pF
Output: $Z_{OUT} = R_{OUT} \parallel C_{OUT}$		—	6,1 \parallel 5,7	—	k Ω \parallel pF
Temperature coefficient of frequency					
		—	-18	—	ppm/K

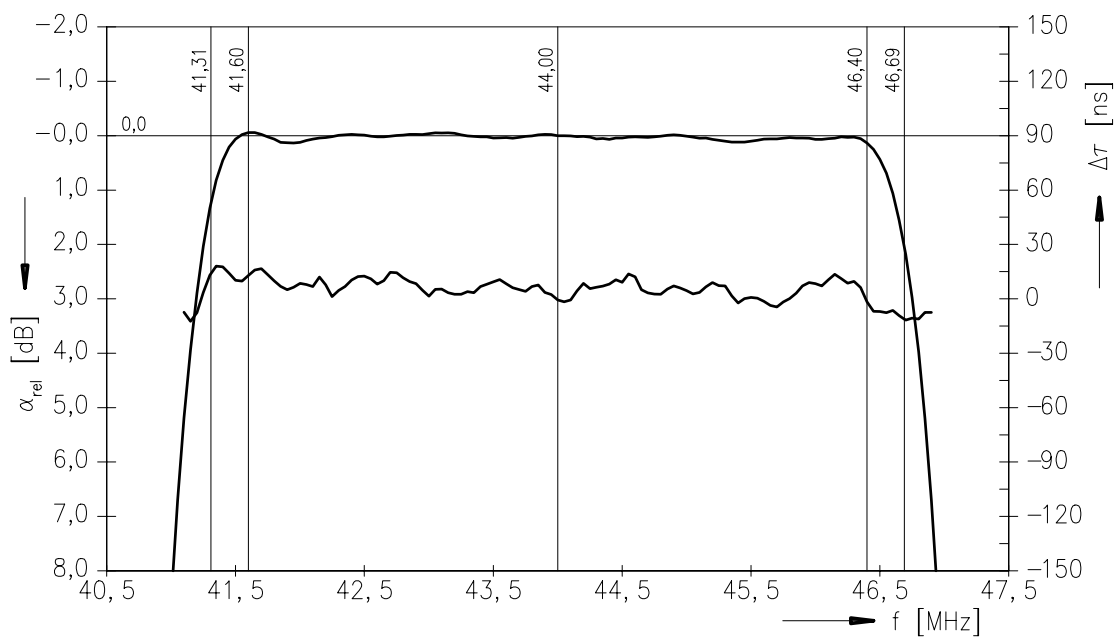
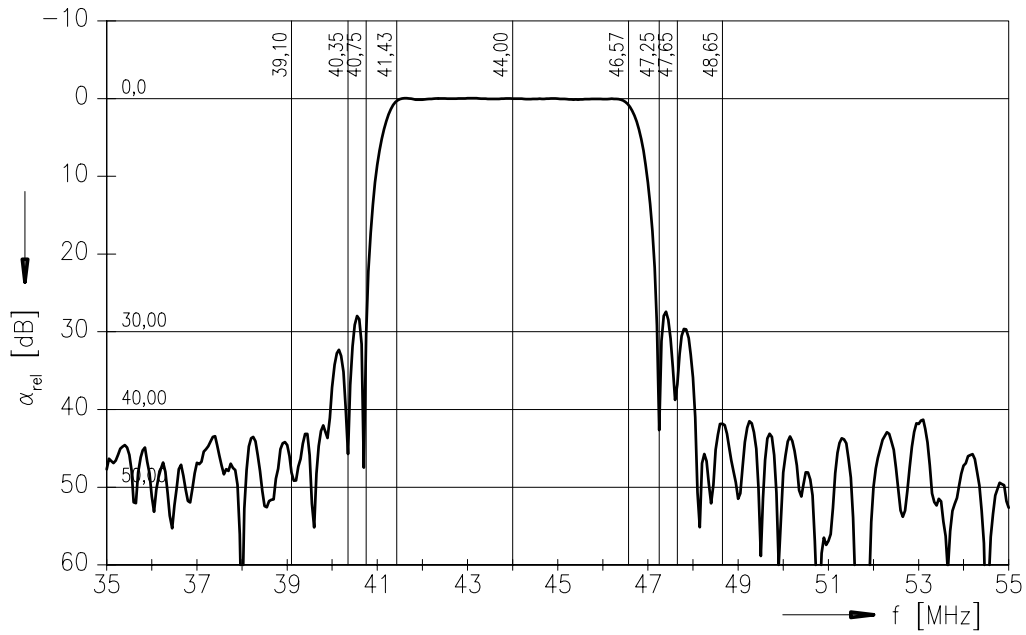
Matching network:



$L_{p1} = 1800 \text{ nH}$

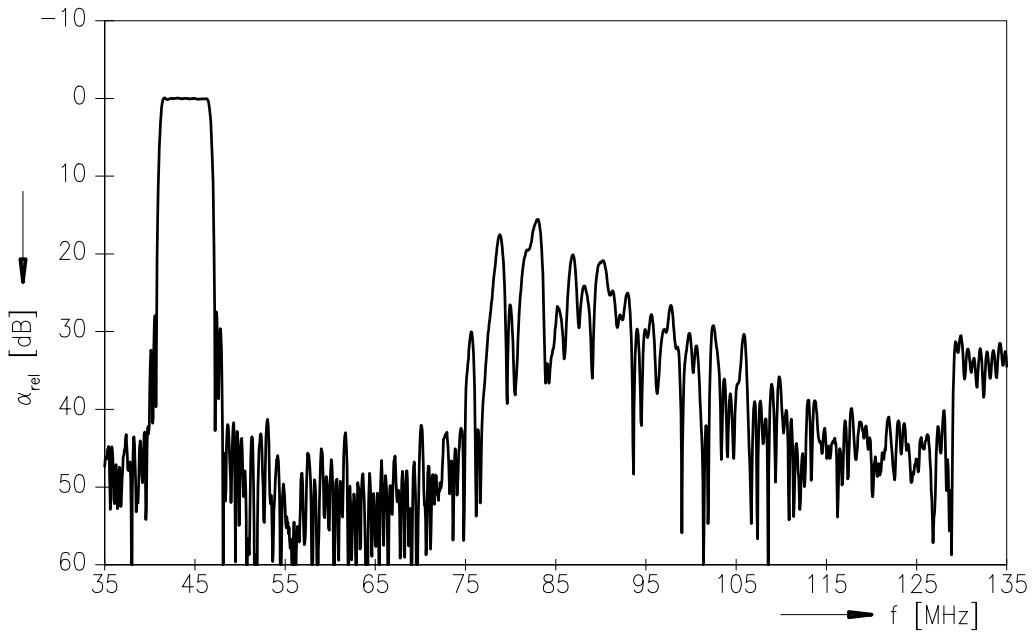
Data Sheet

Frequency response

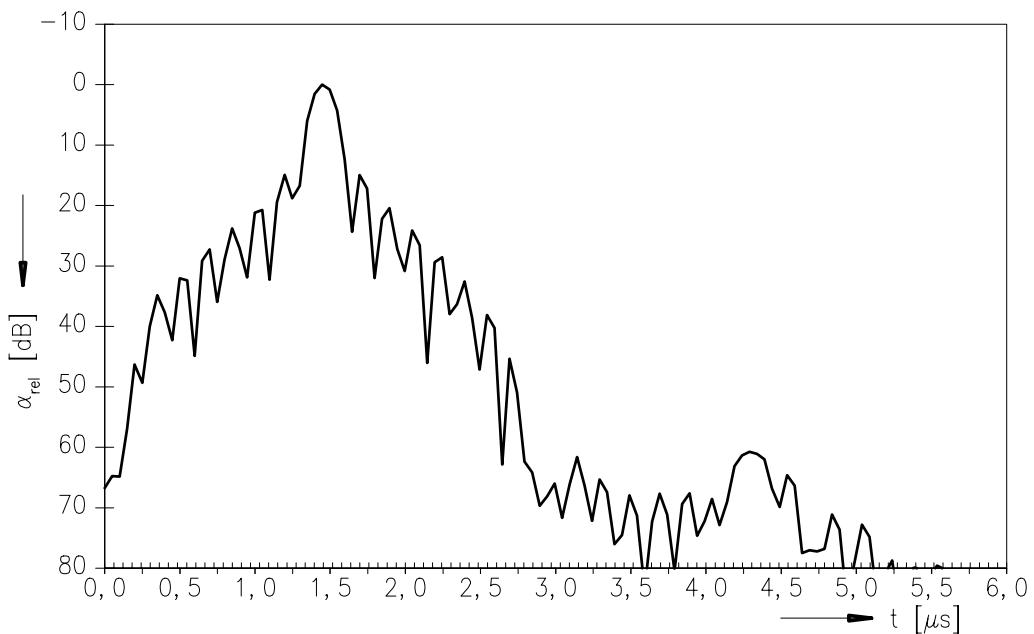


Data Sheet

Frequency response



Time domain response



Published by EPCOS AG**Surface Acoustic Wave Components Division, SAW CE MM PD****P.O. Box 80 17 09, D-81617 München**

© EPCOS AG 2003. All Rights Reserved. Reproduction, publication and dissemination of this brochure and the information contained therein without EPCOS' prior express consent is prohibited.

The information contained in this brochure describes the type of component and shall not be considered as guaranteed characteristics. Purchase orders are subject to the General Conditions for the Supply of Products and Services of the Electrical and Electronics Industry recommended by the ZVEI (German Electrical and Electronic Manufacturers' Association), unless otherwise agreed.



This brochure replaces the previous edition.

For questions on technology, prices and delivery please contact the Sales Offices of EPCOS AG or the international Representatives.

Due to technical requirements components may contain dangerous substances. For information on the type in question please also contact one of our Sales Offices.

Looking for pricing, stock, or lifecycle information?

Click below to explore more details on WIN SOURCE:

-  [View B39440-X6941-N201 on WIN SOURCE](#)
-  [EPCOS \(TDK\) Information](#)

Optimize Your Supply Chain with WIN SOURCE Solutions

-  Global Sourcing Solution
-  Obsolete Management
-  Cost Control Management
-  Shortage Management
-  Alternative Solution
-  Excess Inventory Management