



**THE DATASHEET OF  
B39242-B7809-A510**





# SAW Components

Data Sheet B7809





SAW Components

B7809

Low-Loss Filter for Mobile Communication

2441,75 MHz

Data Sheet



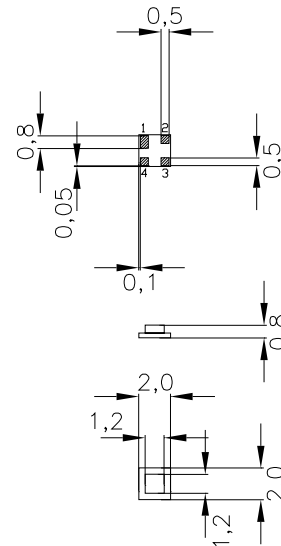
Chip sized SAW package

**Features**

- Low-loss RF filter for Bluetooth
- Low amplitude ripple
- Usable passband 83,5 MHz
- No matching network required for operation at 50 Ω
- Ceramic package for Surface Mounted Technology (SMT)

**Terminals**

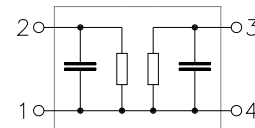
- Gold-plated Ni



Dimensions in mm, approx. weight 0,01 g

**Pin configuration**

- 2                    Input
- 3                    Output
- 1, 4                Ground



Type	Ordering code	Marking and Package according to	Packing according to
B7809	B39242-B7809-A510	C61157-A7-A63	F61074-V8099-Z000

Electrostatic Sensitive Device (ESD)

**Maximum ratings**

Operating temperature range	$T$	- 40/+ 85	°C	source impedance 50 Ω, 2400,0 ... 2483,5 MHz
Storage temperature range	$T_{stg}$	- 40/+ 85	°C	
DC voltage	$V_{DC}$	0	V	
Input Power max.	$P_{IN}$	15,0	dBm	



SAW Components

B7809

Low-Loss Filter for Mobile Communication

2441,75 MHz

Data Sheet



**Characteristics**

Operating Temperature Range:  $T = -40^{\circ}\text{C}$  to  $85^{\circ}\text{C}$   
 Terminating source impedance:  $Z_S = 50\Omega$   
 Terminating load impedance:  $Z_L = 50\Omega$

		min.	typ.	max.	
<b>Center frequency</b>	$f_C$	—	2441,75	—	MHz
<b>Maximum insertion attenuation</b>	$\alpha_{\max}$	—	2,6	3,5	dB
2400,0 ... 2483,5 MHz					
<b>Amplitude ripple</b>	$\Delta\alpha$	—	1,2	2,2	dB
2400,0 ... 2483,5 MHz					
		—	1,2	2,0	dB
2400,0 ... 2483,5 MHz *)					
<b>Attenuation</b>	$\alpha$				
0,00 ... 1785,00 MHz		15	17	—	dB
1785,00 ... 1850,00 MHz		20	24	—	dB
1850,00 ... 1950,00 MHz		22	26	—	dB
1950,00 ... 2170,00 MHz		24	29	—	dB
2170,00 ... 2250,00 MHz		20	24	—	dB
2250,00 ... 2300,00 MHz		18	20	—	dB
2600,00 ... 3000,00 MHz		20	25	—	dB
3000,00 ... 4000,00 MHz		15	18	—	dB
4000,00 ... 5000,00 MHz		12	15	—	dB

\*)  $T = -30^{\circ}\text{C}$  to  $85^{\circ}\text{C}$



SAW Components

B7809

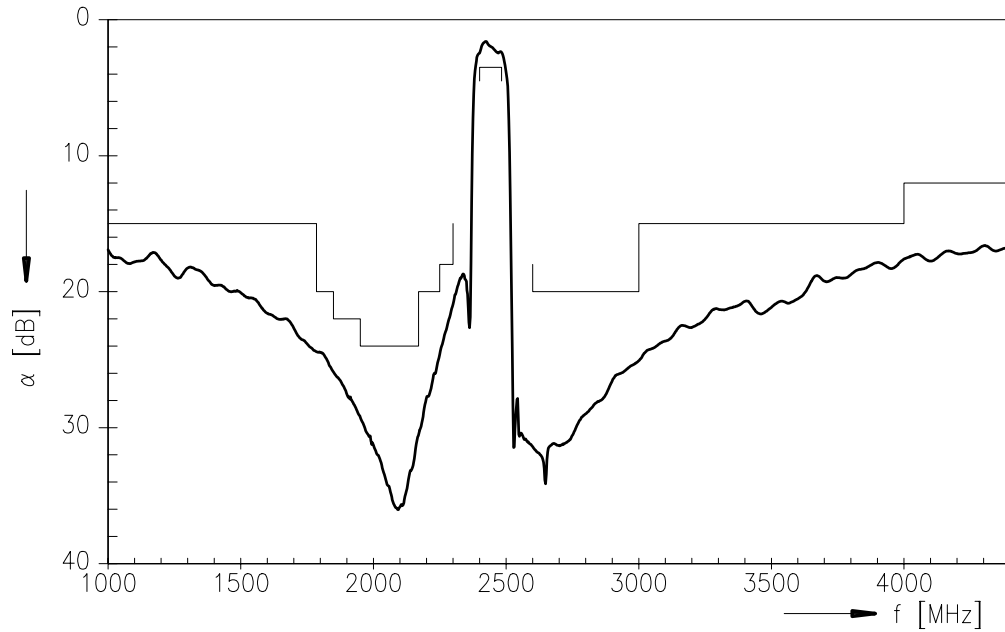
Low-Loss Filter for Mobile Communication

2441,75 MHz

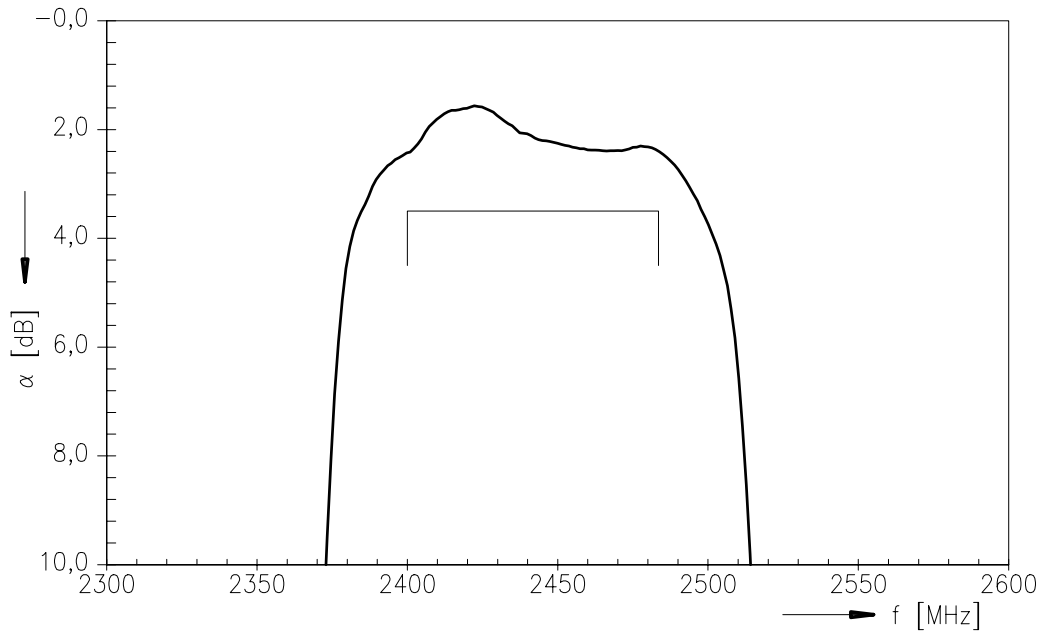
Data Sheet



Transfer function



Transfer function (passband)





**SAW Components**

**B7809**

**Low-Loss Filter for Mobile Communication**

**2441,75 MHz**

Data Sheet



**Published by EPCOS AG**

**SAW MC WT, P.O. Box 80 17 09, 81617 Munich, GERMANY**

**TEL +49 89 636 09, FAX +49 89 636-2 26 89**

© EPCOS AG 2002. Reproduction, publication and dissemination of this brochure and the information contained therein without EPCOS' prior express consent is prohibited.

Purchase orders are subject to the General Conditions for the Supply of Products and Services of the Electrical and Electronics Industry recommended by the ZVEI (German Electrical and Electronic Manufacturers' Association), unless otherwise agreed.



This brochure replaces the previous edition.

For questions on technology, prices and delivery please contact the Sales Offices of EPCOS AG or the international Representatives.

Due to technical requirements components may contain dangerous substances. For information on the type in question please also contact one of our Sales Offices.

## Looking for pricing, stock, or lifecycle information?

Click below to explore more details on WIN SOURCE:

-  [View B39242-B7809-A510 on WIN SOURCE](#)
-  [EPCOS \(TDK\) Information](#)

## Optimize Your Supply Chain with WIN SOURCE Solutions

-  Global Sourcing Solution
-  Obsolete Management
-  Cost Control Management
-  Shortage Management
-  Alternative Solution
-  Excess Inventory Management