



**THE DATASHEET OF
B39182B7844K410**





SAW Components

Data Sheet B7844





SAW Components

B7844

Low-Loss Filter for Mobile Communication

1842,5 MHz

Data Sheet



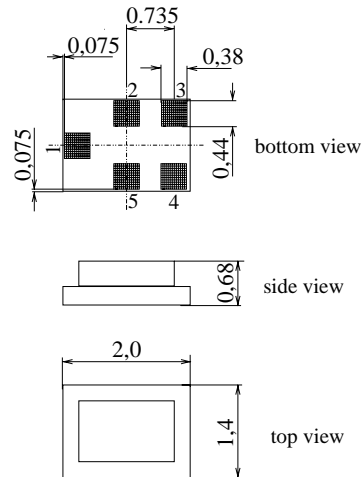
Chip sized SAW package QCS5E

Features

- Low-loss RF filter for mobile telephone PCN systems, receive path
- Very low insertion attenuation
- Low amplitude ripple
- Usable passband 75 MHz
- Unbalanced to balanced operation
- Impedance transformation from 50 Ω to 150 Ω
- Suitable for GPRS class 1 to 12
- Package for **Surface Mount Technology (SMT)**
- Pb-free

Terminals

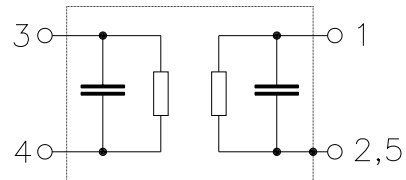
- Ni, gold-plated



Dimensions in mm, approx. weight 0,007 g

Pin configuration

- | | |
|-----|-------------------|
| 1 | Input, unbalanced |
| 3,4 | Output, balanced |
| 2,5 | Case ground |



Type	Ordering code	Marking and Package according to	Packing according to
B7844	B39182-B7844-K410	C61157-A7-A131	F61074-V8151-Z000

Electrostatic Sensitive Device (ESD)

Maximum ratings

Operable temperature range	T	- 20 / + 75	°C	
Storage temperature range	T_{stg}	- 40 / + 85	°C	
DC voltage	V_{DC}	5	V	
ESD voltage	V_{ESD}	50*	V	Machine Model, 10 pulses
Input Power at				
GSM850, GSM900	P_{IN}	15	dBm	peak power of GSM signal,
GSM1800, GSM1900	P_{IN}	12	dBm	duty cycle 4:8
Tx bands				

* - acc. to JESD22-A115A (Machine Model), 10 negative & 10 positive pulses



SAW Components

B7844

Low-Loss Filter for Mobile Communication

1842,5 MHz

Data Sheet



Characteristics

Operating temperature range: $T = 25^{\circ}\text{C} \pm 2^{\circ}\text{C}$
 Terminating source impedance: $Z_S = 50 \Omega$
 Terminating load impedance: $Z_L = 150 \Omega \parallel 15 \text{ nH (balanced)}$

		min.	typ.	max.	
Center frequency	f_C	—	1842,5	—	MHz
Maximum insertion attenuation	α_{max}	—	1,9	2,1	dB
1805,0 ... 1880,0 MHz					
Amplitude ripple (p-p)	$\Delta\alpha$	—	0,6	1,0	dB
1805,0 ... 1880,0 MHz					
Input VSWR		—	2,1	2,6	
1805,0 ... 1880,0 MHz					
Output VSWR		—	2,0	2,6	
1805,0 ... 1880,0 MHz					
Output amplitude balance (S_{31}/S_{21})		-1,0	-0,5 / +0,5	1,0	dB
1805,0 ... 1880,0 MHz					
Output phase balance ($\phi(S_{31}) - \phi(S_{21}) + 180^{\circ}$)		-10	-1 / +3	10	°
1805,0 ... 1880,0 MHz					
Attenuation	α				
0,0 ... 902,0 MHz		30	50	—	dB
902,0 ... 940,0 MHz		45	50	—	dB
940,0 ... 1705,0 MHz		28	33	—	dB
1705,0 ... 1785,0 MHz		12	16	—	dB
1920,0 ... 1980,0 MHz		15	18	—	dB
1980,0 ... 2030,0 MHz		24	28	—	dB
2030,0 ... 2400,0 MHz		28	32	—	dB
2400,0 ... 2500,0 MHz		32	37	—	dB
2500,0 ... 2775,0 MHz		27	30	—	dB
2775,0 ... 2880,0 MHz		40	47	—	dB
2880,0 ... 3610,0 MHz		28	46	—	dB
3610,0 ... 3760,0 MHz		40	46	—	dB
3760,0 ... 5415,0 MHz		28	47	—	dB
5415,0 ... 5640,0 MHz		35	44	—	dB
5640,0 ... 6000,0 MHz		28	44	—	dB



SAW Components

B7844

Low-Loss Filter for Mobile Communication

1842,5 MHz

Data Sheet



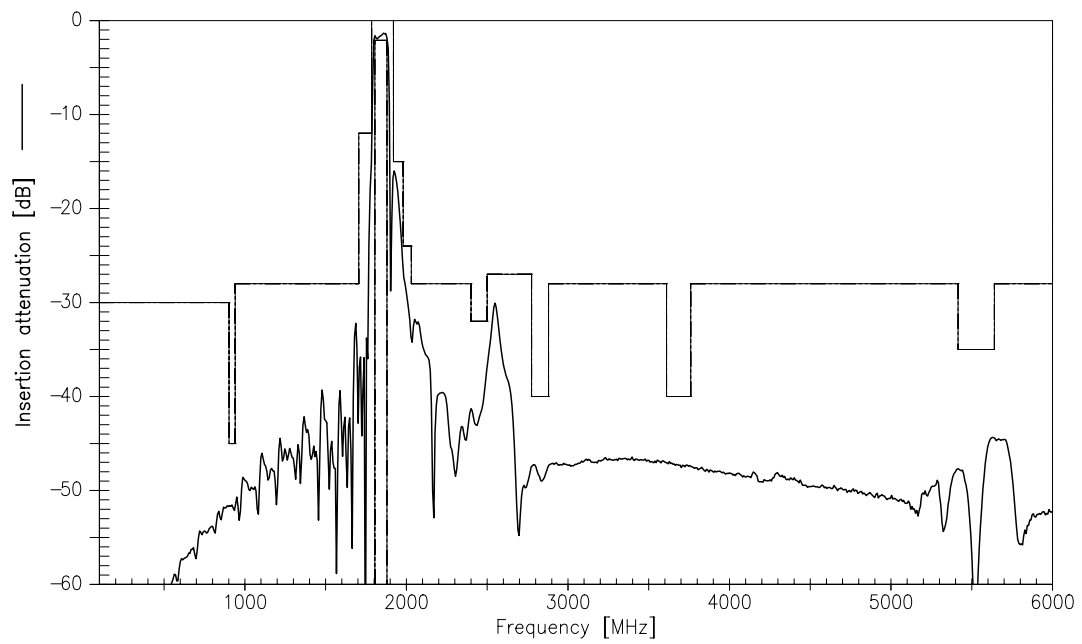
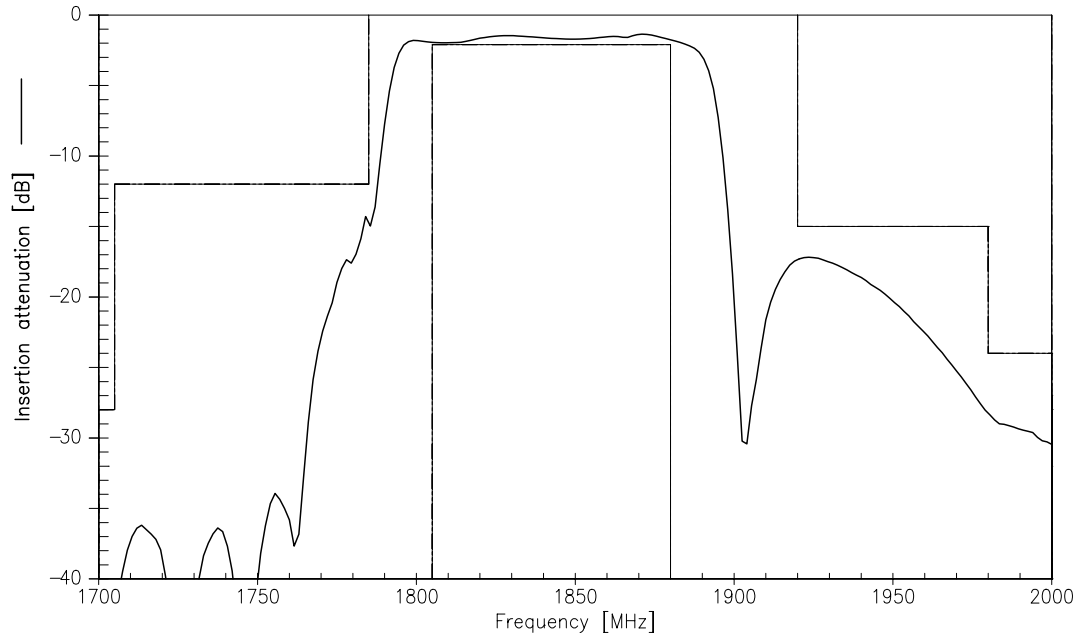
Characteristics

Operating temperature range: $T = -20$ to $+75$ °C
 Terminating source impedance: $Z_S = 50 \Omega$
 Terminating load impedance: $Z_L = 150 \Omega \parallel 15$ nH (balanced)

		min.	typ.	max.	
Center frequency	f_C	—	1842,5	—	MHz
Maximum insertion attenuation	α_{max}	—	1,9	2,3	dB
1805,0 ... 1880,0 MHz					
Amplitude ripple (p-p)	$\Delta\alpha$	—	0,6	1,3	dB
1805,0 ... 1880,0 MHz					
Input VSWR		—	2,1	2,6	
1805,0 ... 1880,0 MHz					
Output VSWR		—	2,0	2,6	
1805,0 ... 1880,0 MHz					
Output amplitude balance (S_{31}/S_{21})		-1,0	-0,7 / +0,5	1,0	dB
1805,0 ... 1880,0 MHz					
Output phase balance ($\phi(S_{31})-\phi(S_{21})+180^\circ$)		-10	-1 / +4	10	°
1805,0 ... 1880,0 MHz					
Attenuation	α				
0,0 ... 902,0 MHz		30	50	—	dB
902,0 ... 940,0 MHz		45	50	—	dB
940,0 ... 1705,0 MHz		28	33	—	dB
1705,0 ... 1785,0 MHz		10	14	—	dB
1920,0 ... 1980,0 MHz		15	18	—	dB
1980,0 ... 2030,0 MHz		23	28	—	dB
2030,0 ... 2400,0 MHz		28	32	—	dB
2400,0 ... 2500,0 MHz		32	37	—	dB
2500,0 ... 2775,0 MHz		27	30	—	dB
2775,0 ... 2880,0 MHz		40	47	—	dB
2880,0 ... 3610,0 MHz		28	46	—	dB
3610,0 ... 3760,0 MHz		40	46	—	dB
3760,0 ... 5415,0 MHz		28	47	—	dB
5415,0 ... 5640,0 MHz		35	44	—	dB
5640,0 ... 6000,0 MHz		28	44	—	dB



Transfer function





SAW Components

B7844

Low-Loss Filter for Mobile Communication

1842,5 MHz

Data Sheet



Published by EPCOS AG

Surface Acoustic Wave Components Division, SAW MC WT

P.O. Box 80 17 09, 81617 Munich, GERMANY

© EPCOS AG 2003. Reproduction, publication and dissemination of this brochure and the information contained therein without EPCOS' prior express consent is prohibited.

Purchase orders are subject to the General Conditions for the Supply of Products and Services of the Electrical and Electronics Industry recommended by the ZVEI (German Electrical and Electronic Manufacturers' Association), unless otherwise agreed.



This brochure replaces the previous edition.

For questions on technology, prices and delivery please contact the Sales Offices of EPCOS AG or the international Representatives.

Due to technical requirements components may contain dangerous substances. For information on the type in question please also contact one of our Sales Offices.

Looking for pricing, stock, or lifecycle information?

Click below to explore more details on WIN SOURCE:

-  [View B39182B7844K410 on WIN SOURCE](#)
-  [EPCOS \(TDK\) Information](#)

Optimize Your Supply Chain with WIN SOURCE Solutions

-  Global Sourcing Solution
-  Obsolete Management
-  Cost Control Management
-  Shortage Management
-  Alternative Solution
-  Excess Inventory Management