



**THE DATASHEET OF
B39162B7708C510**





SAW Components

Data Sheet B7708





SAW Components

B7708

Low Loss Filter

1575,42 MHz

Data Sheet



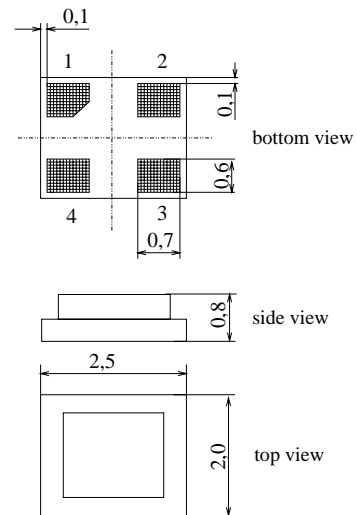
Features

- Low loss RF filter for GPS receivers
- Usable passband 2,0 MHz
- Low amplitude ripple
- Package for **Surface Mounted Technology (SMT)**

Terminals

- Ni, gold-plated

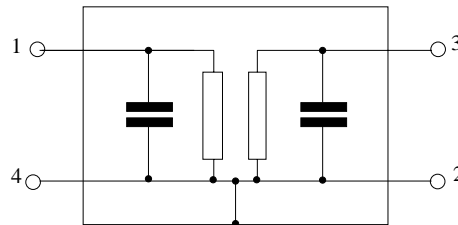
Chip sized SAW package



Dimensions in mm, approx. weight 0,01 g

Pin configuration

- 1 Input, unbalanced
- 3 Output, unbalanced
- 2, 4 To be grounded, Case Ground



Type	Ordering code	Marking and Package according to	Packing according to
B7708	B39162-B7708-C510	C61157-A7-A80	F61074-V8111-Z000

Electrostatic Sensitive Device (ESD)

Maximum ratings

Operable temperature range	T	- 40 / + 85	°C	source and load impedance 50 Ω continuous wave signal
Storage temperature range	T_{stg}	- 40 / + 85	°C	
DC voltage	V_{DC}	5	V	
Input power max.				
1574,3 ... 1576,7 MHz	P_{IN}	3	dBm	
50,0...1535,5 and 1625,5 ... 6000 MHz	P_{IN}	15	dBm	



SAW Components

B7708

Low Loss Filter

1575,42 MHz

Data Sheet



Characteristics

Operating temperature range: $T = -40\text{ °C to }+85\text{ °C}$
 Terminating source impedance: $Z_S = 50\ \Omega$
 Terminating load impedance: $Z_L = 50\ \Omega$

		min.	typ.	max.	
Center frequency	f_C	—	1575,42	—	MHz
Maximum insertion attenuation	α_{max}	—	2,4	3,5	dB
	1574,22 ... 1576,62 MHz				
Amplitude ripple (p-p)	$\Delta\alpha$	—	0,1	1,0	dB
	1574,22 ... 1576,62 MHz				
Group delay	τ	—	35	50	ns
	1574,22 ... 1576,62 MHz				
Attenuation	α				
	50,0 ... 1535,0 MHz	35	42	—	dB
	1625,0 ... 1630,0 MHz	30	44	—	dB
	1630,0 ... 3500,0 MHz	35	40	—	dB
	3500,0 ... 4000,0 MHz	20	35	—	dB
	4000,0 ... 6000,0 MHz	10	20	—	dB
Return loss					
	1574,22 ... 1576,62 MHz	11,0	19,0	—	dB
VSWR					
	1574,22 ... 1576,62 MHz	—	1,25	1,8	



SAW Components

B7708

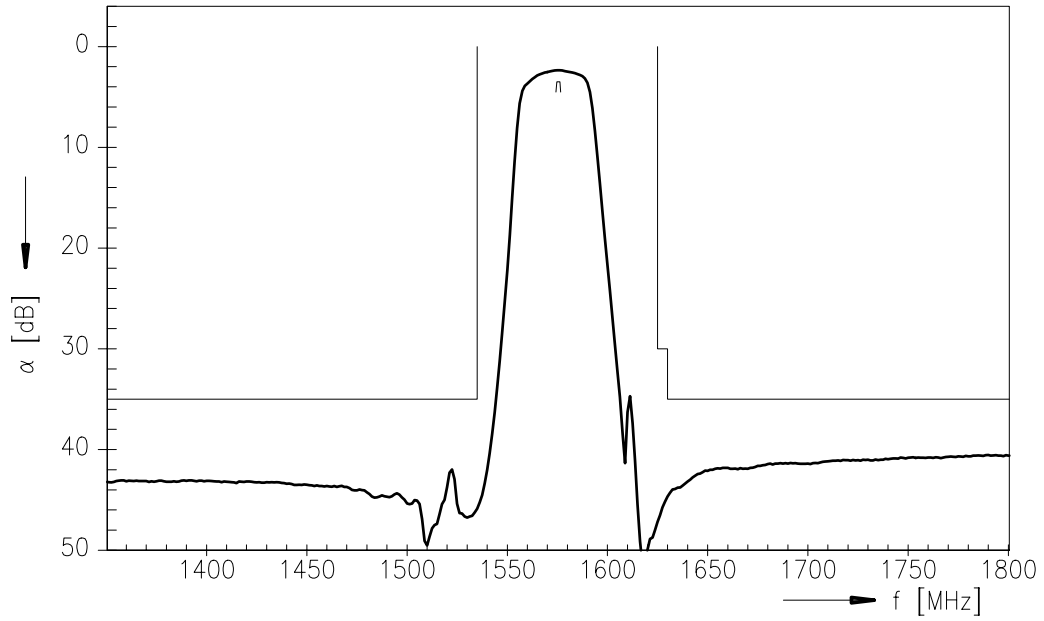
Low Loss Filter

1575,42 MHz

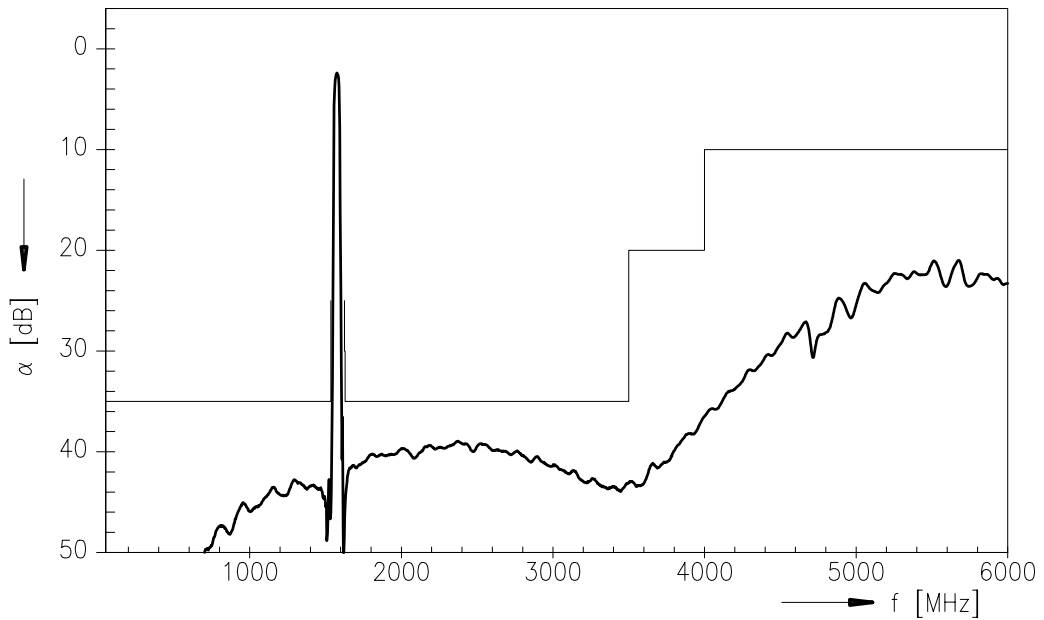
Data Sheet



Transfer function



Transfer function (wide band)





SAW Components

B7708

Low Loss Filter

1575,42 MHz

Data Sheet



Published by EPCOS AG

Surface Acoustic Wave Components Division, SAW MC IS

P.O. Box 80 17 09, D-81617 München

© EPCOS AG 2001. All Rights Reserved.

As far as patents or other rights of third parties are concerned, liability is only assumed for components per se, not for applications, processes and circuits implemented within components or assemblies.

The information describes the type of component and shall not be considered as assured characteristics.



Terms of delivery and rights to change design reserved.

For questions on technology, prices and delivery please contact the sales offices of EPCOS AG or the international representatives.

Due to technical requirements components may contain dangerous substances. For information on the type in question please also contact one of our sales offices.

Looking for pricing, stock, or lifecycle information?

Click below to explore more details on WIN SOURCE:

-  [View B39162B7708C510 on WIN SOURCE](#)
-  [EPCOS \(TDK\) Information](#)

Optimize Your Supply Chain with WIN SOURCE Solutions

-  Global Sourcing Solution
-  Obsolete Management
-  Cost Control Management
-  Shortage Management
-  Alternative Solution
-  Excess Inventory Management