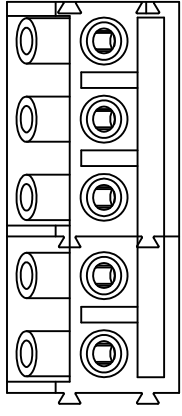
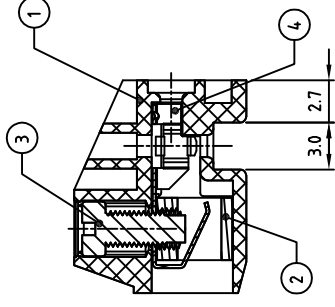
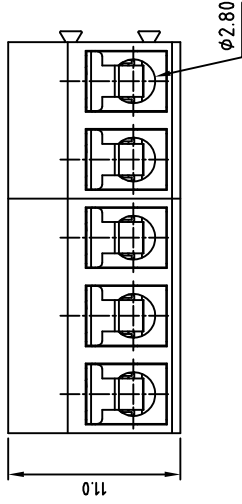
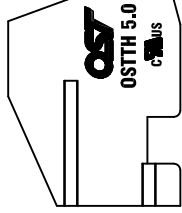
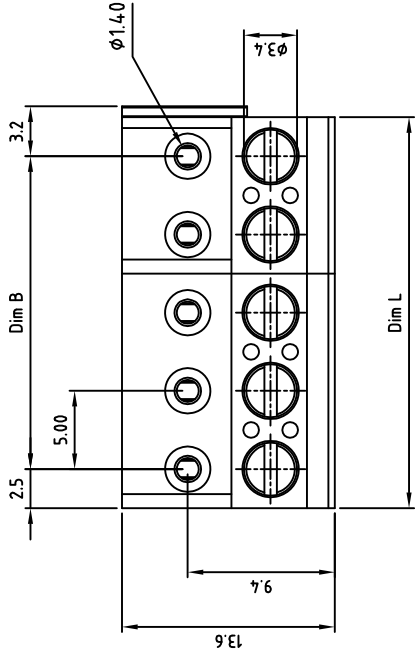




**THE DATASHEET OF
OSTTH100160**



Transfer or duplication of this document as well as the utilisation or communication of its content are not permitted unless express consent is granted. Violations give rise to claims for damages. All rights reserved in case of patent, utility model or design patent registrations.



Part No: C

| | | |
|-------------------|------------|-----------------|
| 4 | WIRE GUARD | PhBz t=0.20mm |
| 3 | SCREW | STEEL |
| 2 | CAGE | BRASS |
| 1 | BODY | PA66 UL94V-0 |
| ITEM NAME OF PART | | MAT |
| DWG | WF. Zhang | DATE 2015.04.25 |
| CHK. | WF. Zhang | DATE 2017.07.25 |
| APP. | | DATE |





ON-SHORE TECHNOLOGY, INC.

| | | | | |
|---|------|-------------|------|------|
| △ | SIGN | DESCRIPTION | CHK. | DATE |
|---|------|-------------|------|------|

Looking for pricing, stock, or lifecycle information?

Click below to explore more details on WIN SOURCE:

-  [View OSTTH100160 on WIN SOURCE](#)
-  [On Shore Technology Inc. Information](#)

Optimize Your Supply Chain with WIN SOURCE Solutions

-  Global Sourcing Solution
-  Obsolete Management
-  Cost Control Management
-  Shortage Management
-  Alternative Solution
-  Excess Inventory Management