



# THE DATASHEET OF FAL11

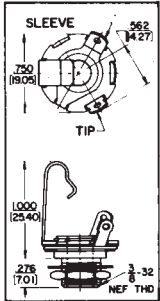


SWITCHCRAFT, INC. 5555 N. Elston Ave.  
Chicago, IL 60630 • 773 792-2700 • FAX: 773 792-2129

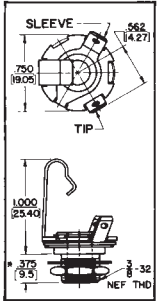
www.switchcraft.com

## 1/4" PHONE JACKS

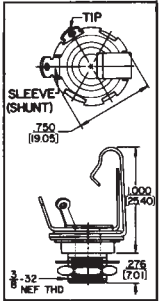
### Littel Jax® Jacks



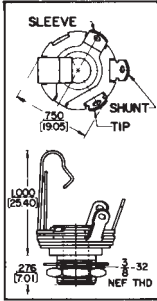
11, L-11, C-11, S-11



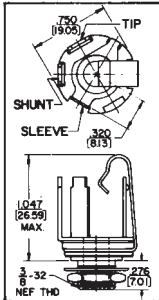
FA-11, FAL-11  
\*276 in. for No. FA-11



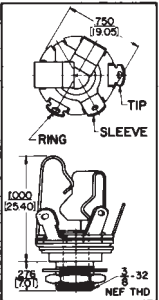
12



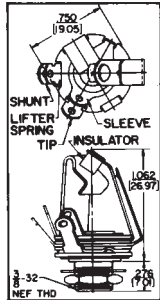
12A, L-12A,  
S-12A, SC-12A



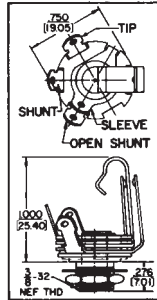
PC-12A



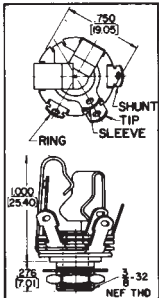
12B, C-12B,  
S-12B, SC-12B



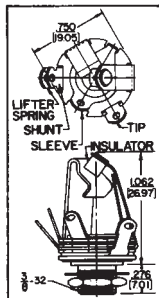
13



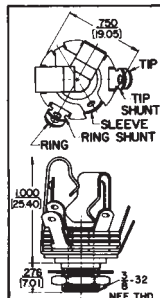
13A



13B, S-13B





13E








14B

# Looking for pricing, stock, or lifecycle information

Click below to explore more details on WIN SOURCE:

-  [View FAL11 on WIN SOURCE](#)
-  [Switchcraft Inc. Information](#)

## Optimize Your Supply Chain with WIN SOURCE

-  Global Sourcing Solution
-  Obsolete Management
-  Cost Control Management
-  Shortage Management
-  Alternative Solution
-  Excess Inventory Management