



**THE DATASHEET OF  
S8081-46R**



# Customer Information Sheet

DRAWING No.: S8081-46R

SHEET 2 OF 2

IF IN DOUBT - ASK

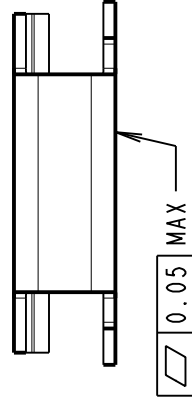
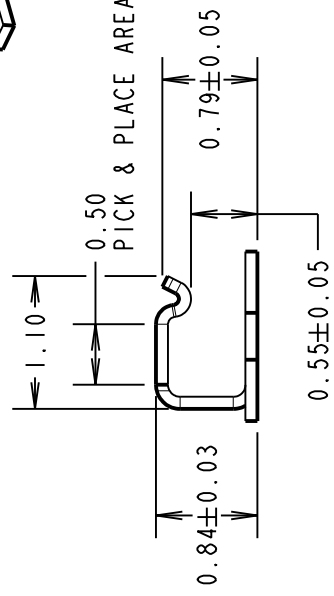
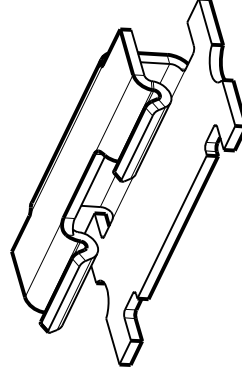
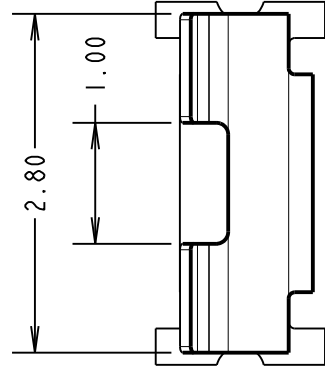
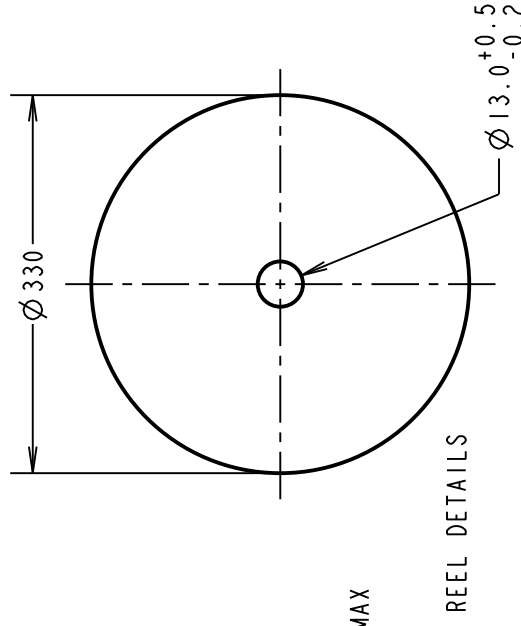
(C)

NOT TO SCALE

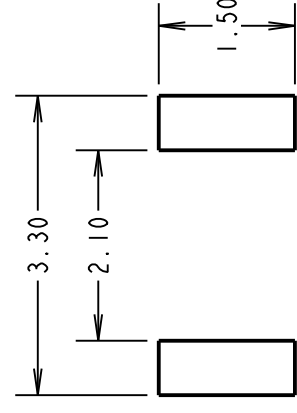
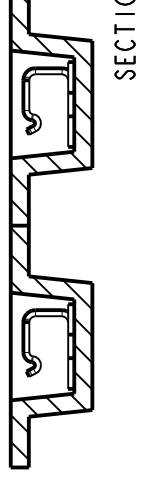
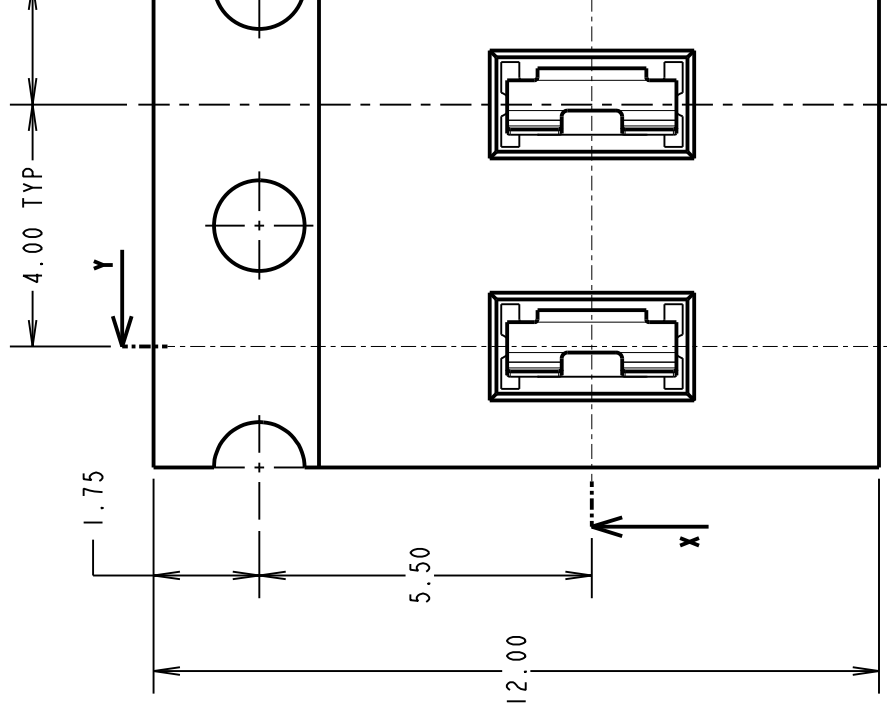
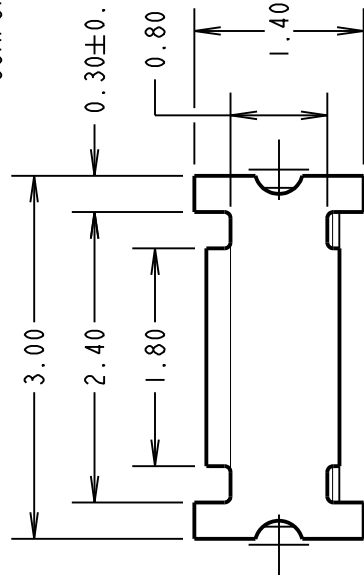
- NOTES:
- THIS PRODUCT IS RECOMMENDED FOR USE WITH S07-46 AND S08-46 LED BRIDGE PINS.
  - ALL PRODUCT IS RoHS AND REACH COMPLIANT.
  - PRODUCT IS TAPE AND REELED IN GENERAL ACCORDANCE WITH EIA-481-2 (ELECTRONICS INDUSTRIES ASSOCIATION).
  - PACKAGING = 10,000 COMPONENTS PER REEL.

**SPECIFICATION:**

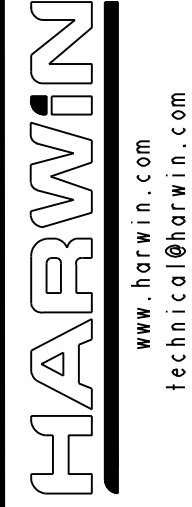
**MATERIAL:**  
 CONTACT = STAINLESS STEEL, 0.10mm THICK  
**FINISH:**  
 1.0 $\mu$  - 3.0 $\mu$  TIN OVER 0.4 $\mu$  - 1.5 $\mu$  NICKEL  
**ELECTRICAL:**  
 RESISTANCE = 100m $\Omega$  MAX  
**MECHANICAL:**  
 INSERTION FORCE = 12N MAX (INITIAL)  
 WITHDRAWAL FORCE = 4N MIN (INITIAL)  
**ENVIRONMENTAL:**  
 OPERATING TEMPERATURE = -40°C TO +85°C  
**SOLDERING DATA:**  
 SOLDERING HEAT RESISTANCE = 260°C FOR 10 SECONDS MAX



**COMPONENT DETAILS**



RECOMMENDED PCB LAYOUT  
 (TOLERANCE =  $\pm 0.05$ )



THIS DRAWING AND ANY INFORMATION OR DESCRIPTIVE MATTER SET OUT HEREON ARE CONFIDENTIAL AND COPYRIGHT PROPERTY OF THE HARWIN GROUP AND MUST NOT BE DISCLOSED, LOANED, COPIED OR USED FOR MANUFACTURING, TENDERING OR FOR ANY OTHER PURPOSE WITHOUT THEIR WRITTEN PERMISSION.

**TOLERANCES**  
 X. =  $\pm 1$ mm  
 X.X =  $\pm 0.50$ mm  
 X.XX =  $\pm 0.10$ mm  
 X.XXX =  $\pm 0.01$ mm

**FINI**  
 S/ARI

ANGLES =  $\pm 5^\circ$   
 UNLESS STATED

## Looking for pricing, stock, or lifecycle information?

Click below to explore more details on WIN SOURCE:

[View S8081-46R on WIN SOURCE](#)

[Harwin Inc. Information](#)

## Optimize Your Supply Chain with WIN SOURCE Solutions

- ✓ Global Sourcing Solution
- ✓ Obsolete Management
- ✓ Cost Control Management
- ✓ Shortage Management
- ✓ Alternative Solution
- ✓ Excess Inventory Management