



# THE DATASHEET OF RSEN-2030L



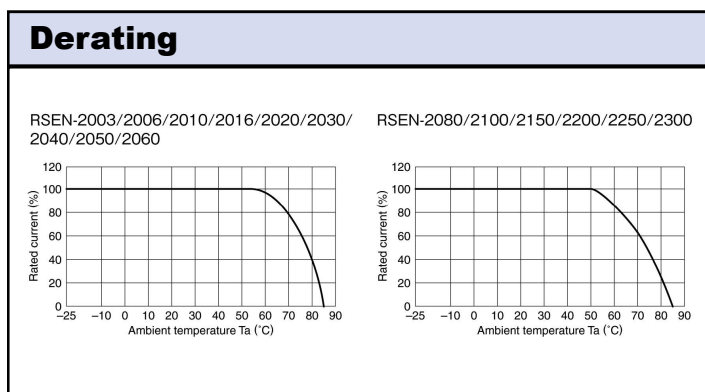
## 3A to 300A, 250VAC EMI Filters

### Features

- ◆ Lower Cost (Than RSHN Series)
- ◆ DIN Rail Mount Option (Up 30A)
- ◆ Low Earth Leakage Current Option (Up to 30A)
- ◆ Conforms to UL, CSA and EN Safety Agency Certifications



Specifications						
<b>Model</b>		<b>RSEN-2003</b> RSEN-2003D RSEN-2003L	<b>RSEN-2006</b> RSEN-2006D RSEN-2006L	<b>RSEN-2010</b> RSEN-2010D RSEN-2010L	<b>RSEN-2016</b> RSEN-2016D RSEN-2016L	<b>RSEN-2020</b> RSEN-2020D RSEN-2020L
Rated Voltage (AC, DC)	V	250V				
Rated Current	A	3A	6A	10A	16A	20A
DC Resistance (total)	mΩ	250	110	40	20	10
<b>Model</b>		<b>RSEN-2030</b> RSEN-2030D RSEN-2030L	<b>RSEN-2040</b>	<b>RSEN-2050</b>	<b>RSEN-2060</b>	<b>RSEN-2080</b>
Rated Voltage (AC, DC)	V	250V				
Rated Current	A	30A	40A	50A	60A	80A
DC Resistance (total)	mΩ	6	6	4	3	3.4
<b>Model</b>		<b>RSEN-2100</b>	<b>RSEN-2150</b>	<b>RSEN-2200</b>	<b>RSEN-2250</b>	<b>RSEN-2300</b>
Rated Voltage (AC, DC)	V	250V				
Rated Current	A	100A	150A	200A	250A	300A
DC Resistance (total)	mΩ	2.7	2	1.4	1	0.7
Withstand Voltage	V	Terminals to Case: 2500VAC (1 Minute)				
Isolation Resistance	MΩ	100MΩ minimum (500VDC, 1 Minute)				
Leakage Current (max)	A	RSEN-20xx 1mA; RSEN20xxL 10uA (250VAC, 60Hz)				
Operating Temperature	°C	-25 to +85°C (Derate above 50 / 55°C, see derating curve)				
Storage Temperature	°C	-25 to +85°C				
Safety Agency Certifications	-	UL1283, CSA C22.2 No.8, EN60939				
Weight	g	170g to 8400g model dependant (See weights chart on website)				
Warranty	yr	5 Year				

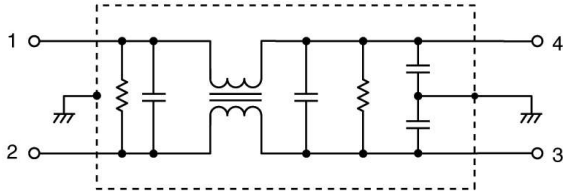


### Options

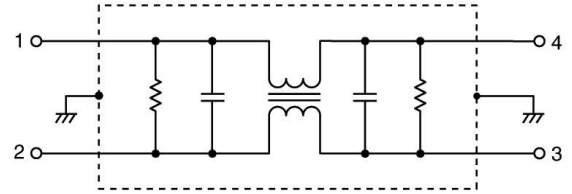
Chassis Mount & Standard Leakage Current	RSEN-20xx
DIN Rail Mount & Standard Leakage Current	RSEN-20xxD
Chassis Mount & Low Leakage Current	RSEN-20xxL

## Circuit

RSEN-2 \*\*\*  
RSEN-2 \*\*\* D

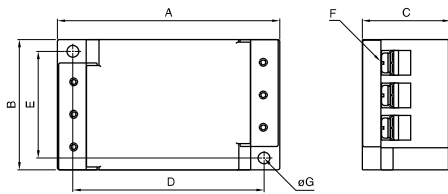


RSEN-2 \*\*\* L

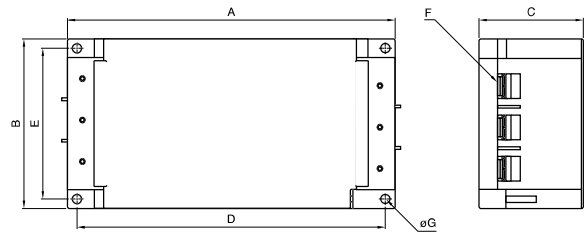


## Outline Drawing

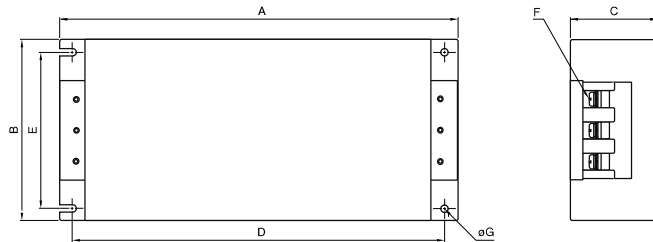
RSEN-2003/2006/2010/2016/2020/2030



RSEN-2040/2050/2060



RSEN-2080/2100/2150/2200/2250/2300



Dimensions in mm



Part No.	A	B	C	D	E	F	G	Recommended clamping torque
RSEN-2003	87	52	35	75	43	M4	4.5	1.27N m
RSEN-2006								
RSEN-2010								
RSEN-2016								
RSEN-2020								
RSEN-2030	170	90	54	160	80	M5	4.5	2.5N m
RSEN-2040								
RSEN-2050								
RSEN-2060	267	161	85	247	135	M8	6.5	7.64N m
RSEN-2080								
RSEN-2100								
RSEN-2150								
RSEN-2200								
RSEN-2250	395	195	100	375	169	M10	6.5	11.8N m
RSEN-2300								

For Additional Information, please visit  
[us.tdk-lambda.com/lp/products/r-series.htm](http://us.tdk-lambda.com/lp/products/r-series.htm)



## Looking for pricing, stock, or lifecycle information?

Click below to explore more details on WIN SOURCE:

-  [View RSEN-2030L on WIN SOURCE](#)
-  [TDK-Lambda Americas Inc. Information](#)

## Optimize Your Supply Chain with WIN SOURCE Solutions

-  Global Sourcing Solution
-  Obsolete Management
-  Cost Control Management
-  Shortage Management
-  Alternative Solution
-  Excess Inventory Management