

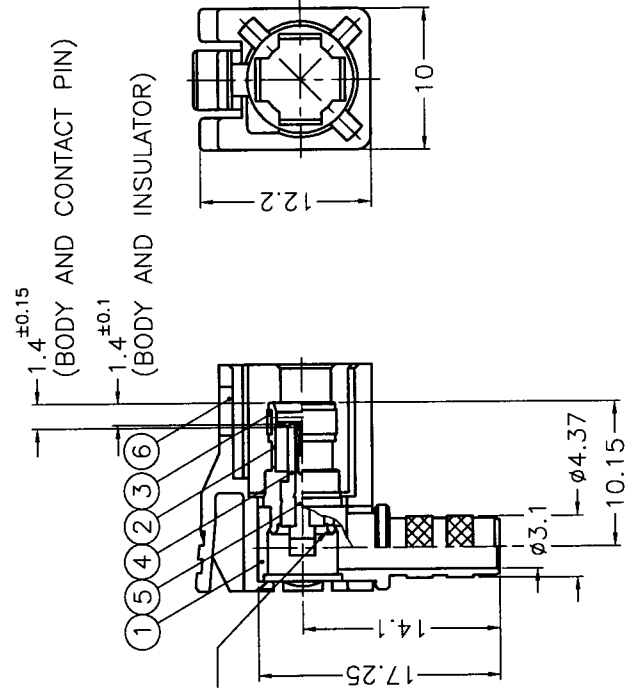
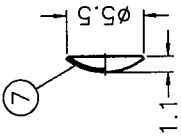


**THE DATASHEET OF
FA1-NCRJ-C04-0**

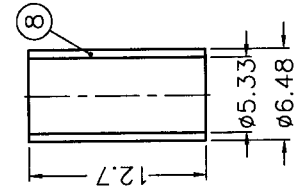


1 2 3 4 5 6

REVISIONS	
ISS	DESCRIPTION PER REQUEST \ DATE
B	A-3 NO.4 WAS CHANGED\RD-DM91010401W\01-04-02'
C	A-3 NO.1 AND NO.2 WERE CHANGED\N/A\02-21-02'
D	C-B NO.6 WAS CHANGED\RD-DM91031401L\03-14-02'
E	C-B NO.6 WAS CHANGED\RD-DM91080601L\08-06-02'
F	C-B NO.6 WAS CHANGED\RD-DM91092501L\09-25-02'
F1	B-6 CANCELLED L AND M KEY CODING\N/A\02-13-03'
F2	B-1 NOTE 8 WAS CHANGED\N/A\05-15-03'



NOTES: FINISH (PLATING THICKNESS IN MICRO-INCHES)
 1. BRASS PER QQ-B-626, ALLOY 360, 1/2 H ; JIS H3250 C 3604BD OR EQUIVALENT
 2. BERYLLIUM COPPER PER QQ-C-530, ALLOY 173, 1/2 H ; ASTM B-196 ; FUJII FX301 OR EQUIVALENT
 3. BERYLLIUM COPPER JIS C1720R-1/4H ; ASTM B-194 OR EQUIVALENT
 4. NICKEL PL. 60 MIN. THICK OVER OPTIONAL COPPER STRIKE
 5. GOLD PL. 30 MIN. THICK OVER NICKEL PL. 100 MIN. THICK OVER OPTIONAL COPPER STRIKE
 6. TEFLON MIL-P-19468 ; ASTM D-1710 OR EQUIVALENT
 7. COPPER PER ASTM B-75 ALLOY C12200 OR EQUIVALENT
 8. NYLON66(WITH 33% GLASS FIBER) PER NYTEX COMPOSITES CO., LTD.
 9. BRASS PER QQ-B-613, ALLOY 260, H ; JIS H3100 C 2680R-H OR EQUIVALENT



TABLE

KEY CODING	PART NO.	DRAWING NO.
A	FA1-NARJ-C04-0	FK6112AW-008-N
B	FA1-NBRJ-C04-0	FK6112BW-008-N
C	FA1-NCRJ-C04-0	FK6112CW-008-N
D	FA1-NDRJ-C04-0	FK6112DW-008-N
E	FA1-NERJ-C04-0	FK6112EW-008-N
F	FA1-NFRJ-C04-0	FK6112FW-008-N
G	FA1-NGRJ-C04-0	FK6112GW-008-N
H	FA1-NHRJ-C04-0	FK6112HW-008-N
I	FA1-NIRJ-C04-0	FK6112IW-008-N
K	FA1-NKRJ-C04-0	FK6112KW-008-N
Z	FA1-NZRJ-C04-0	FK6112ZW-008-N

NO.	DESCRIPTION	MATERIAL	FINISH	Q'TY	DRAWING NO.	SCALE	2/1	ISSUE	F2	FILE NO.
8	FERRULE	NOTE 7	NOTE 4	1	FKFR00201A	DIMENSIONS ARE IN MILLIMETERS				
7	PLATE	NOTE 9	NOTE 4	1	FKPA00102A	UNLESS OTHERWISE SPECIFIED TOLERANCES				
6	LOCK COVER	NOTE 8		1	SEE TABLE	0.5-6 = ±0.2				
5	CONTACT PIN	NOTE 2	NOTE 5	1	FKCP00801A	6-30 = ±0.4				
4	INSULATOR	NOTE 6	NATURAL	1	FKNS01201A	30-120 = ±0.6				
3	RETAINER RING	NOTE 3	NATURAL	1	FKRR00101A	120-315 = ±1				
2	BODY	NOTE 1	NOTE 4	1	FKBD00601B	315-1000 = ±1.6				
1	HOUSING	NOTE 1	NOTE 4	1	FKHS00301B	1000-2000 = ±2.4				

PART NO.		FA1-NXRJ-C04-0	
APPROVED	DATE	MARK CHU	05-15-03'
CHECKED	DATE	COASE WANG	05-15-03'
DRAWN	DATE	LILY CHIU	05-15-03'
DRAWING NO.		FK611	
ITEM NO.		FK611	

Donbury, CT, USA
 TITLE FAKRA R/
 (FOR RG-
 DRAWING NO. FK611
 ITEM NO. FK611

CONFIC
 NO CHANGES PER
 PPAP QUALIF

3



CAB

1. CRIMP
HEX
2. CONT

1 2 3 4 5 6

Looking for pricing, stock, or lifecycle information?

Click below to explore more details on WIN SOURCE:

-  [View FA1-NCRJ-C04-0 on WIN SOURCE](#)
-  [Amphenol-RF Division Information](#)

Optimize Your Supply Chain with WIN SOURCE Solutions

-  Global Sourcing Solution
-  Obsolete Management
-  Cost Control Management
-  Shortage Management
-  Alternative Solution
-  Excess Inventory Management