



**THE DATASHEET OF
FA2-NBSP-C01-0**



REVISIONS		
ISS	ZONE	DESCRIPTION\PER REQUEST\DATE

CONFIGURATION CONTROL:
NO CHANGES PERMITTED TO DRAWING WITHOUT PPAP QUALIFIED CUSTOMER APPROVAL

F

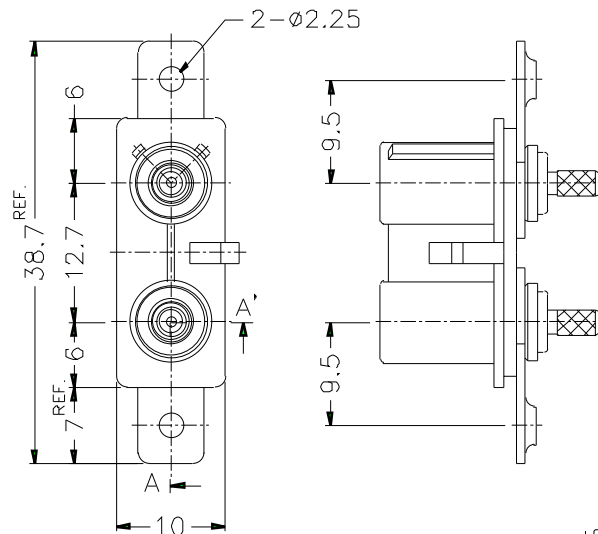
E

D

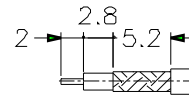
C

B

A

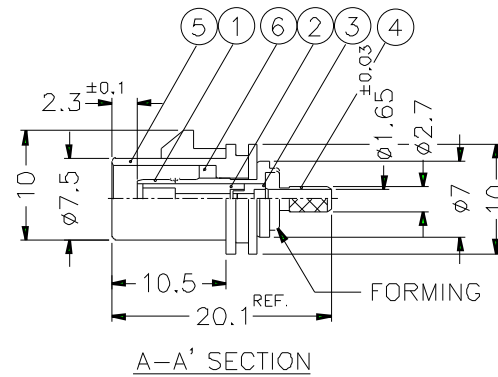


- NOTES: FINISH (PLATING THICKNESS IN MICRO-INCHES)
- BRASS PER QQ-B-626, ALLOY 360, 1/2 H ; JIS H3250 C 3604BD OR EQUIVALENT
 - NICKEL PL. 60 MIN. THICK OVER COPPER STRIKE
 - GOLD PL. 30 MIN. THICK OVER NICKEL PL. 100 MIN. THICK OVER COPPER STRIKE
 - TEFLON MIL-P-19468 OR EQUIVALENT
 - COPPER PER ASTM B-75 ALLOY C12200 OR EQUIVALENT
 - PBT(WITH 15% GLASS FIBER) PER CHANG CHUN GRADE 4115202 OR EQUIVALENT

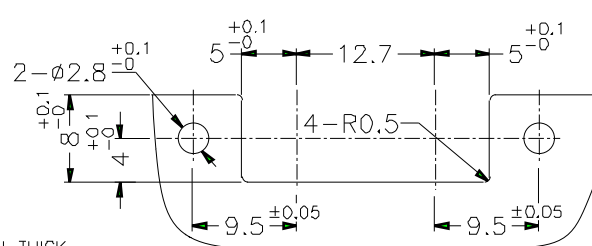
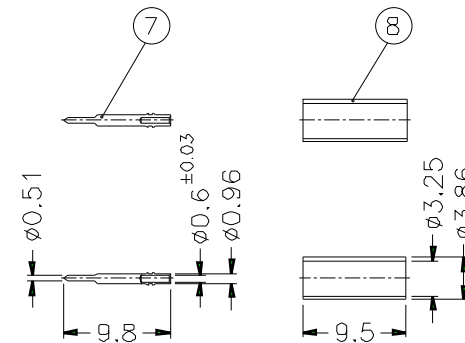


RECOMMENDED
CABLE STRIPPING DIM'S

- CRIMPED FERRULE
HEX CRIMP SIZE .128"
- CRIMPED CONTACT PIN
SQ. CRIMP SIZE 0.7mm



A-A' SECTION



RECOMMENDED
MOUNTING HOLE

TABLE

KEY CODING	D/N	P/N
A	FKT1321AW-007-NT30G-50	FA2-NASP-C01-0
B	FKT1321BW-007-NT30G-50	FA2-NBSP-C01-0
C	FKT1321CW-007-NT30G-50	FA2-NCSP-C01-0
D	FKT1321DW-007-NT30G-50	FA2-NDSP-C01-0
E	FKT1321EW-007-NT30G-50	FA2-NESP-C01-0
F	FKT1321FW-007-NT30G-50	FA2-NFSP-C01-0
G	FKT1321GW-007-NT30G-50	FA2-NGSP-C01-0
H	FKT1321HW-007-NT30G-50	FA2-NHSP-C01-0
I	FKT1321IW-007-NT30G-50	FA2-NISP-C01-0
K	FKT1321KW-007-NT30G-50	FA2-NKSP-C01-0
Z	FKT1321ZW-007-NT30G-50	FA2-NZSP-C01-0

8	FERRULE	NOTE 5	NOTE 2	2	FKFR00101A
7	CONTACT PIN	NOTE 1	NOTE 3	2	FKCPO0101A
6	RING	NOTE 1	NOTE 2	2	FKLR00101A
5	LOCK COVER	NOTE 6		1	SEE TABLE
4	BARREL	NOTE 1	NOTE 2	2	FKBR00101B
2	INSULATOR	NOTE 4	NATURAL	2	FKNS00201A

DIMENSIONS ARE IN MILLIMETERS
UNLESS OTHERWISE SPECIFIED
TOLERANCES
0.5-8 = ±0.2
6-30 = ±0.4
30-120 = ±0.6
120-315 = ±1



PART NO. FA2-NXSP-C01-0	
APPROVED	DATE 10-08-01'
CHECKED	DATE

Amphenol
Danbury,CT,USA-Tainan,Taiwan-She

TITLE
FAKRA TWIN SMB CRIMP PLUG
(FOR RG-174/U, 188A/U, 316

Looking for pricing, stock, or lifecycle information?

Click below to explore more details on WIN SOURCE:

-  [View FA2-NBSP-C01-0 on WIN SOURCE](#)
-  [Amphenol-RF Division Information](#)

Optimize Your Supply Chain with WIN SOURCE Solutions

-  Global Sourcing Solution
-  Obsolete Management
-  Cost Control Management
-  Shortage Management
-  Alternative Solution
-  Excess Inventory Management