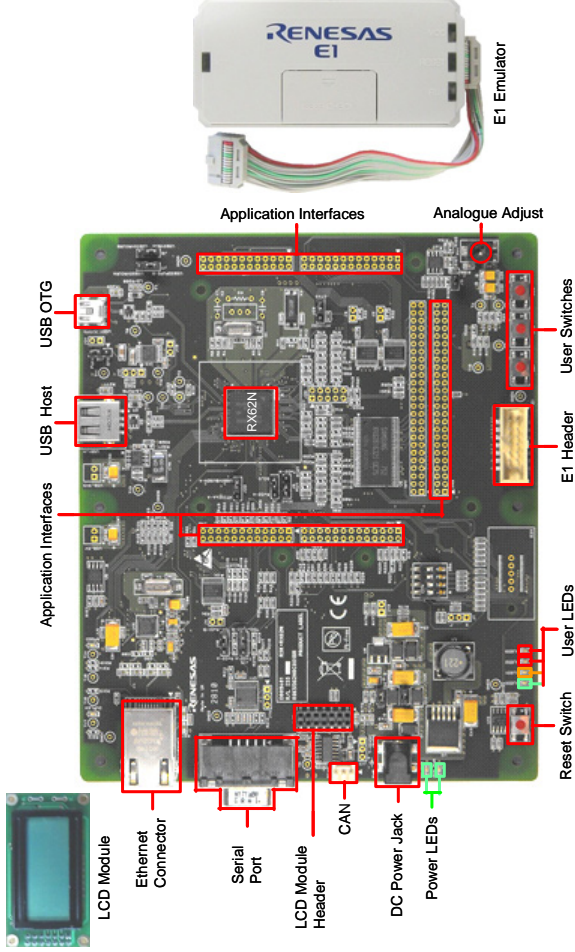


Quick Start for RX62N

Renesas Starter Kit+



2. Connection

10. Fit the LCD module to the connector marked correctly inserted in the socket.
11. Connect the E1 debugger module to the connector marked correctly inserted in the socket.
12. Connect the E1 debugger module to a spare USB port on the PC. The connection will flash.
13. The 'Found New Hardware' Wizard will appear. Administrator privileges are required for a successful installation.
Windows™ XP
 - a. Select option 'No, not this time' in 'Found New Hardware' Wizard dialog, and click <Next> button.
 - b. Verify the "Recommended" option is selected in the "New Project Wizard" dialog, and click <Next>.
 - c. Click <Finish> to close the wizard.

Note: The Windows driver signing dialog may be displayed. The green 'ACT' LED on the E1 debugger module will flash.

3. HEW Workspace

- HEW integrates various tools such as compiler, linker, and debugger. To learn more on how to use HEW, open the 'Help' menu > High-performance Embedded Workshop > Renesas > High-performance Embedded Workshop > Renesas RX Standard'. Select "RSK+RX62N" from the Start Menu. (Start Menu > All Programs > Renesas > High-performance Embedded Workshop > Renesas RX Standard').
16. In the "Welcome" dialog box: Verify "Create Project" is selected. Click <Next>.
 17. In the "New Project Workspace" dialog box: Enter a name for the workspace. The project name. You can change this name to 'Tutorial'. Click <Next>.
 18. Enter a name for the workspace. The project name. You can change this name to 'Tutorial'. Click <Next>.
 19. On the "RSK+RX62N - Step 1" window: Select "RSK+RX62N" from the Start Menu. (Start Menu > All Programs > Renesas > High-performance Embedded Workshop > Renesas RX Standard').
 20. On the "RSK+RX62N - Step 2" window: Select "RSK+RX62N" from the Start Menu. (Start Menu > All Programs > Renesas > High-performance Embedded Workshop > Renesas RX Standard').
 21. On the Project Generator Information window: Verify "Create Project" is selected. Click <Next>.
 22. Select the 'Debug' build configuration in the 'Project Properties' dialog box.
 23. Click on the 'Build' icon to compile, assemble, and load the program.
- ### 4. Programming and Debug
24. Ensure that 'SessionRX600_E1_E20_SYSTEM' is selected in the right hand drop down list on the 'Session' dialog box.
 25. Check switch SW4, pin 3 is set ON. This switch is used to enable the debugger.
 26. Click the <Connect> button on the 'Debug' dialog box.

1. Installation

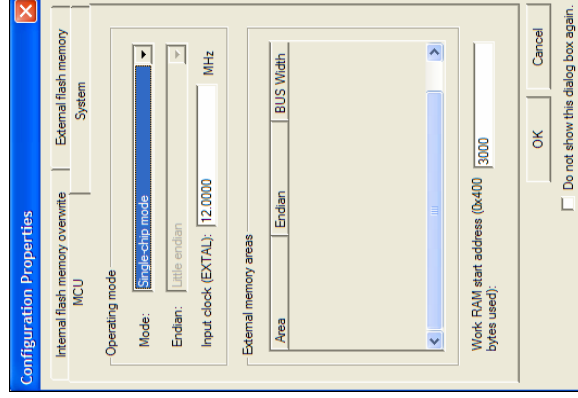
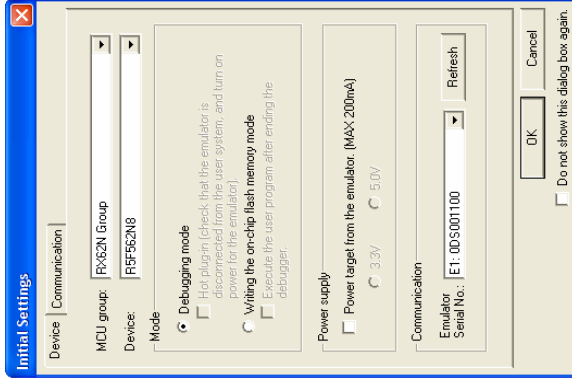
Do not connect the E1 debugger module until the software support has been installed.

1. Insert the CD into your computer's CD-ROM drive. The CD should automatically run the installation program. If the installer does not start, browse to the CD root folder and double click on 'setup.exe'.
 2. Windows™ Vista/7 users may see "User Account Control" dialog box. If applicable, enter the administrator password and click <OK>.
 3. The installer will ask you which language is to be used, please choose the appropriate one and click <OK>.
 4. On the first screen of the installer proper, click <Next>.
 5. The License Agreement will be shown, read and click <Yes>.
 6. The next screen asks you to pick the world region – please select and click <Next>.
 7. The destination folders are specified on the next screens. It is recommended to accept the default settings. Click <Next> to continue.
 8. Click <Next> on all screens until the installation process commences.
- Note: The Windows driver signing dialog may be displayed. Please accept the driver to continue.
9. After the completion of successful installation, click <Finish>.

27. Select the correct MCU Group type (RX62N Group illustrated).
28. Select the correct device type (R5F562N8 as illustrated).
29. Select "Debugging Mode".

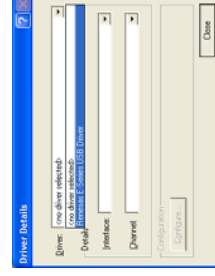
30. Important: Ensure J10 and J11 are open to configure the RSK+ to use the supplied 12V power supply. Failure to do so could result in damage to the RSK+.

31. Connect external power supply to RSK board (12 Volts, centre positive) at PWR connector.
32. In the next dialog box 'Configuration Properties' ensure that 'Single-chip mode' is set and click <OK>.



First use of the E1 module



33. The 'Please choose driver' dialog will be shown. Click <OK>.
34. The 'Driver Details' dialog will be shown, please select 'Renesas E-Series USB Driver' as illustrated. The 'Interface' and 'Channel' items will be automatically populated. Click <Close>.
35. The Firmware setup dialog will be shown warning you not to disconnect the USB cable until the firmware download is complete. Click <OK>.
36. The firmware will be downloaded to the E1 module; this will take a few moments.



Please do not disconnect the E1 from the host during download, doing so is likely to damage the E1 module.

37. The flash memory write program is then downloaded to the microcontroller. The Output window in HEW will state 'Connected'.



38. Right click on the download module listed downloaded to the microcontroller.

39. Click the <Reset - Go> button. You will see the LEDs flash on the board. the rate of flashing using the Analog Adjuster.

40. Click the <Stop> button. The code will stop and the source code will be downloaded.

5. MAC Address

41. Before running starting any Ethernet demo User Manual to configure the MAC addresses.

6. Next Step

After you have completed this quick start package with the kit. You can add projects to the main menu. The tutorials will help you Development Tools.

The Hardware manual supplied with this RSK+ updates to the device manual from the Renesas website.

7. Renesas RX Compiler

The version of the compiler provided with this RSK+ evaluate the full product before the compilation versions are available from your Renesas account.

8. Support

Online technical support and information is available from the Renesas website. Technical Contact Details



America: techsupport.america@renesas.com
Europe: tools.support.eu@renesas.com
Japan: csc@renesas.com

Note on Autoupdate: The Autoupdater is located in the Windows Start Menu and use the register icon will appear in the System Tray notification area. Simply right-click on the icon and use the n

© 2010 (2011) Renesas Electronics Corporation.
© 2010 (2011) Renesas Electronics Europe.
© 2010 (2011) Renesas Solutions Corp. All rights reserved.
Website: www.renesas.com

Looking for pricing, stock, or lifecycle information?

Click below to explore more details on WIN SOURCE:

-  [View R0K5562N0S000BE on WIN SOURCE](#)
-  [Renesas Electronics America Information](#)

Optimize Your Supply Chain with WIN SOURCE Solutions

-  Global Sourcing Solution
-  Obsolete Management
-  Cost Control Management
-  Shortage Management
-  Alternative Solution
-  Excess Inventory Management