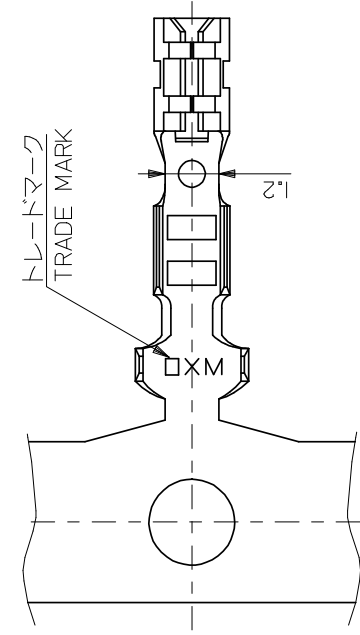


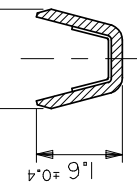


THE DATASHEET OF
8701039

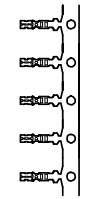
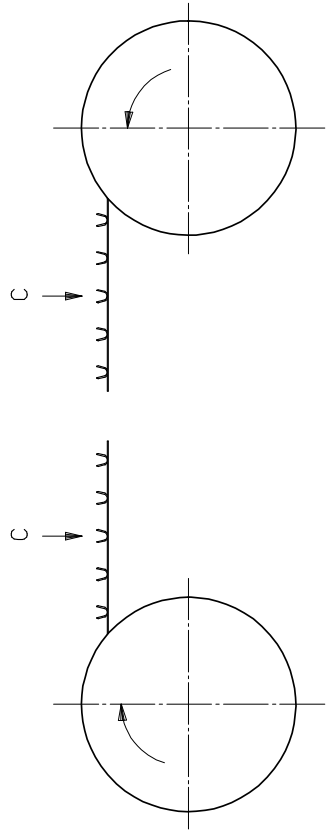
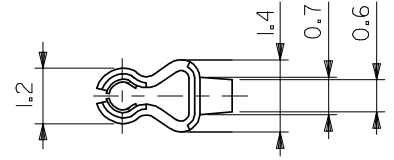
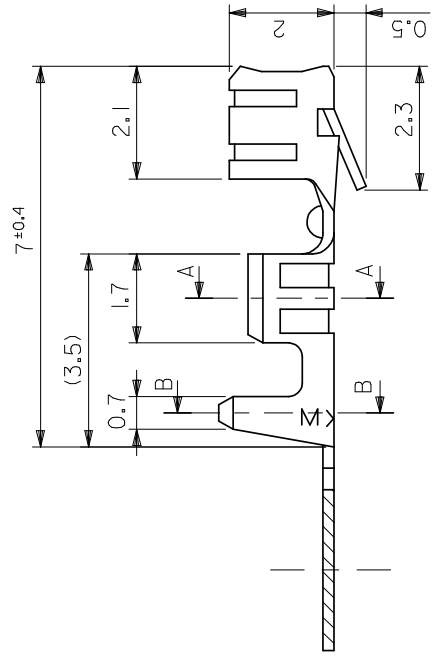




トレードマーク
TRADE MARK



断面 A-A
SECT. A-A




VIEW C

REVISED EC NO: J2008-4450		DRWN:MNABEI 2008/07/01		CHKD:KTOYODA 2008/07/02		APP:NUKITA 2008/07/02	
DESCRIPTION		REV		REV		REV	
GENERAL TOLERANCES (UNLESS SPECIFIED)		10 UNDER		±0.2		DIMENSION ST MM ONL	
10 OVER		30 UNDER		±0.25		DRAWN BY K.TOJO	
30 OVER		ANGULAR		±0.3		CHECKED BY M.FUKUSHIMA	
DRAFT WHERE APPLICABLE MUST REMAIN WITHIN DIMENSIONS		±3 °		APPROVED BY M.ENOMOTO		MATERIAL NO. SEE TA	
SIZE A3		THIS DRAW INCORPORATED		4		4	

lb_frame_A3_J_ME-S
Rev. E 2006/04/15

Looking for pricing, stock, or lifecycle information?

Click below to explore more details on WIN SOURCE:

 [View 8701039 on WIN SOURCE](#)

 [Molex, LLC Information](#)

Optimize Your Supply Chain with WIN SOURCE Solutions

-  Global Sourcing Solution
-  Obsolete Management
-  Cost Control Management
-  Shortage Management
-  Alternative Solution
-  Excess Inventory Management