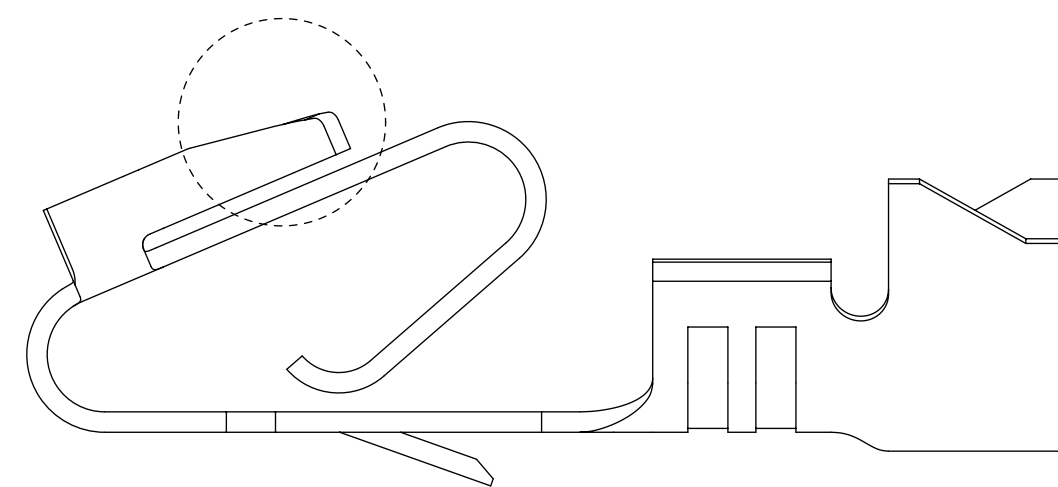


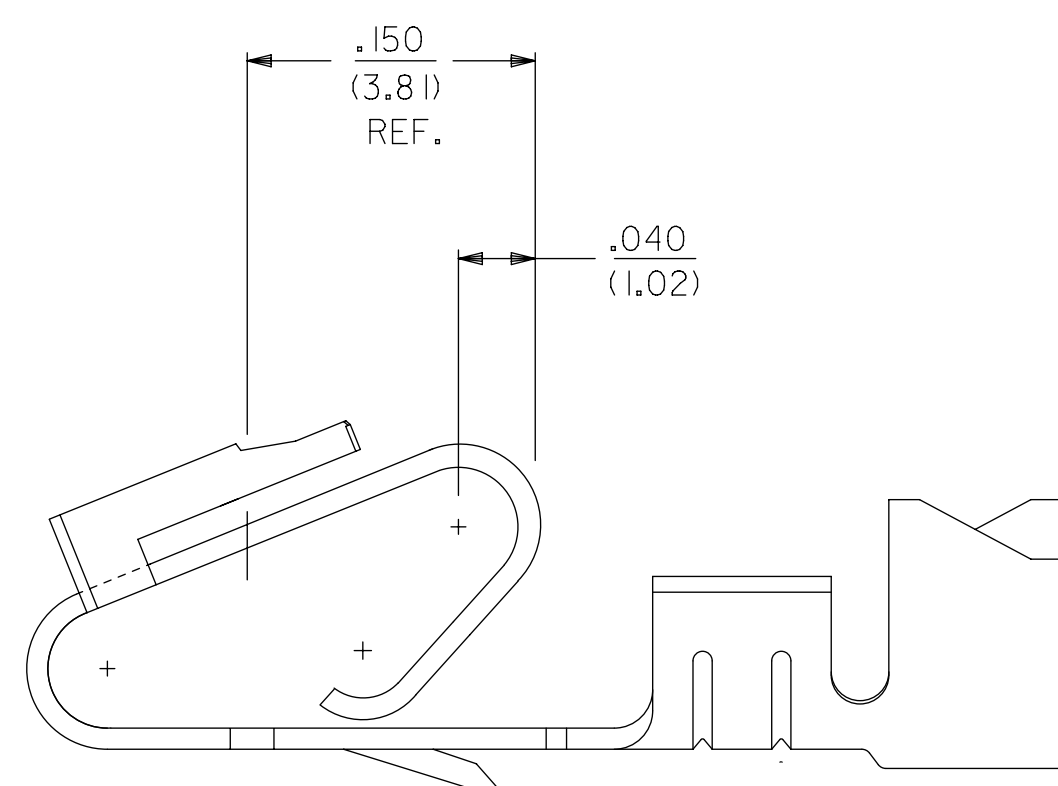


**THE DATASHEET OF**  
**8520112**

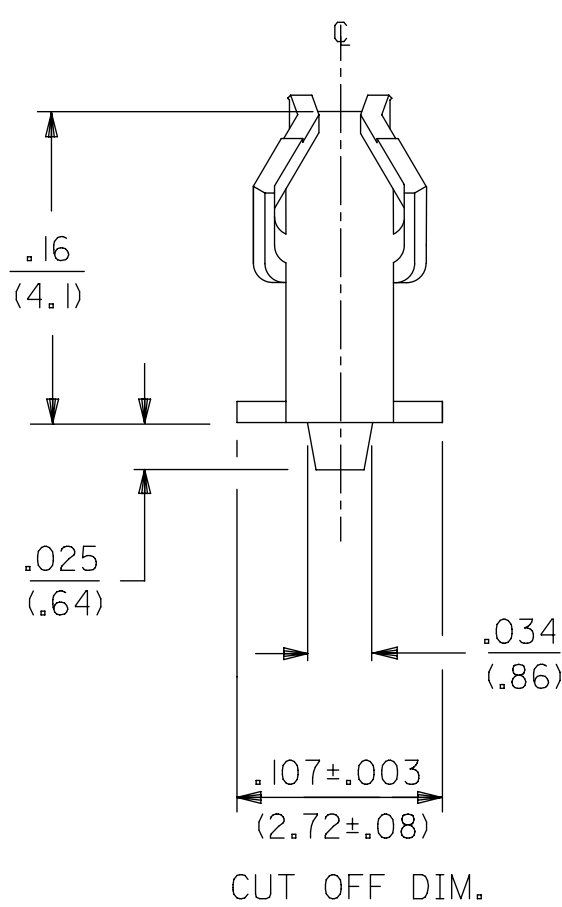




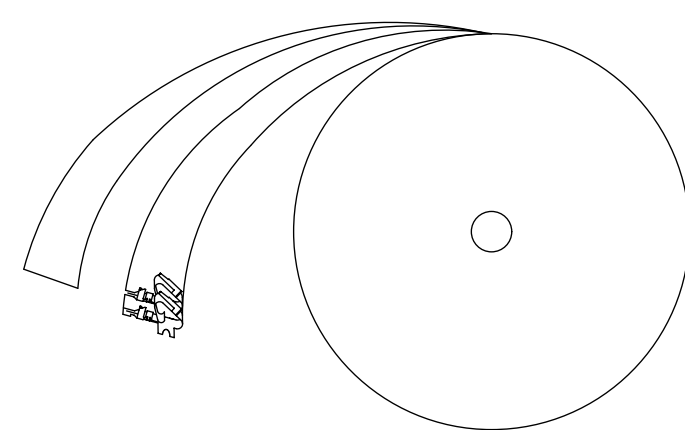
ALTERNATE GEOMETRY  
SEE NOTE 10



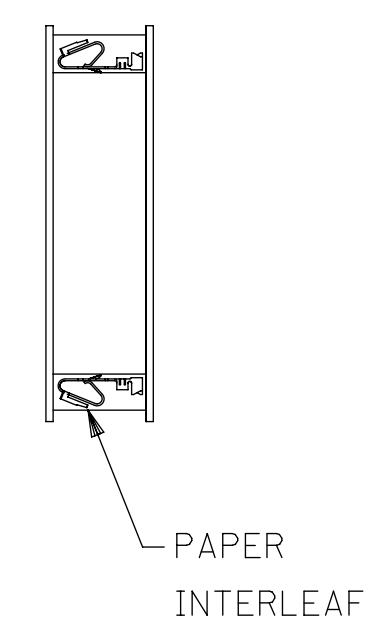
SELECTIVE PLATING  
LOCATION



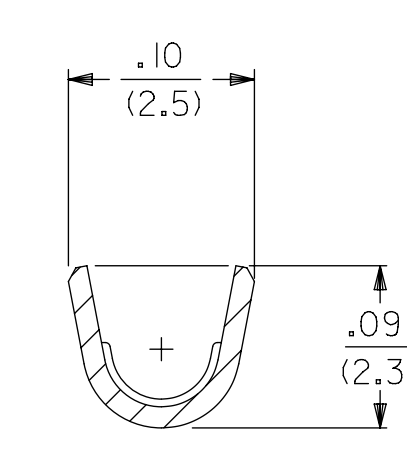
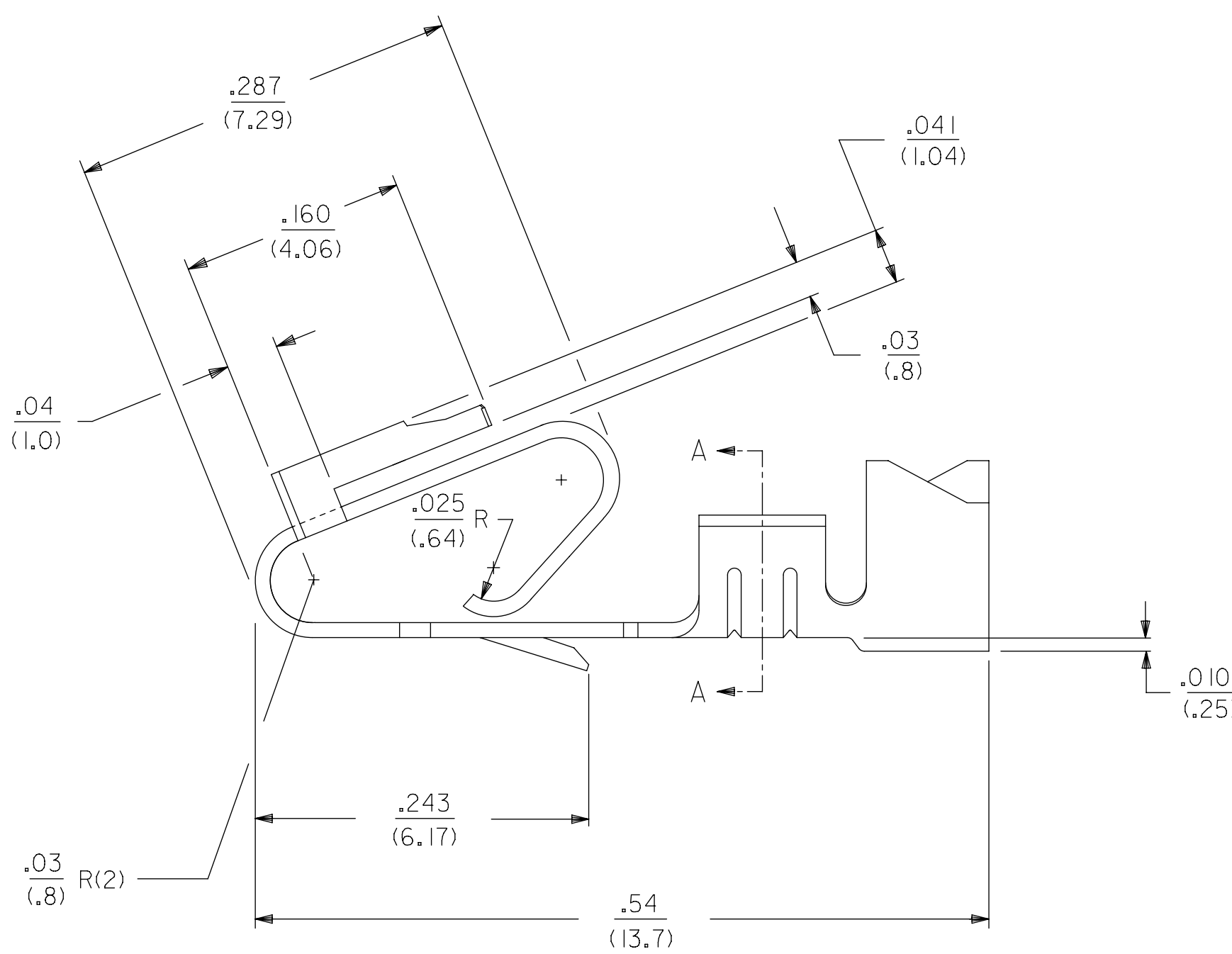
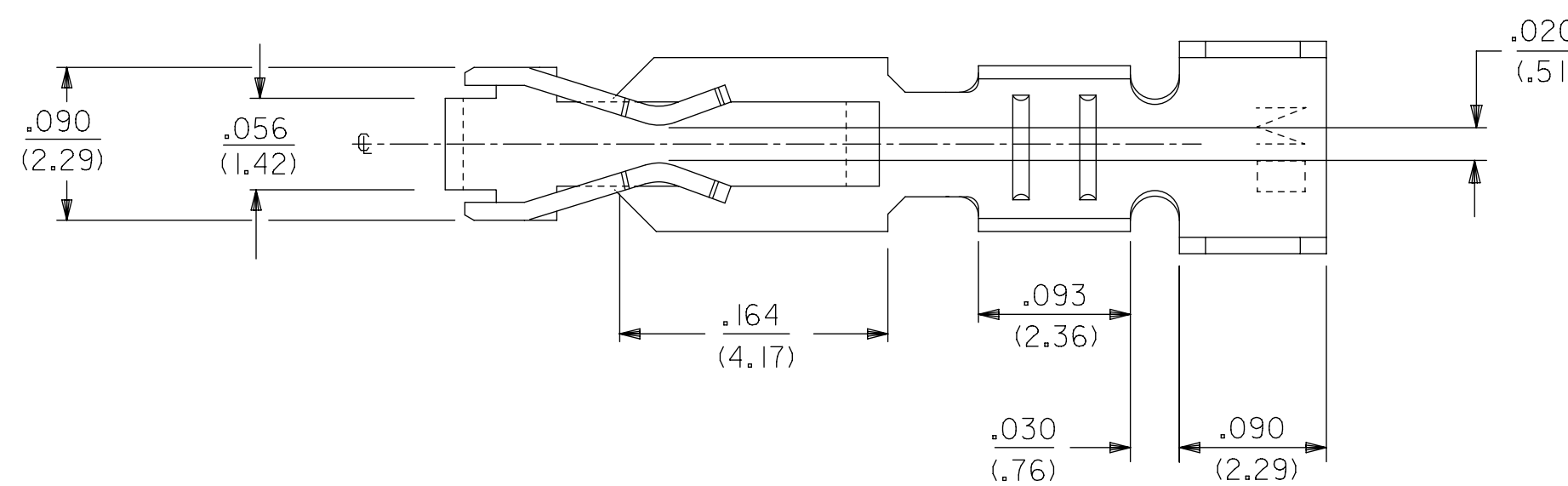
WINDING DETAIL "A"



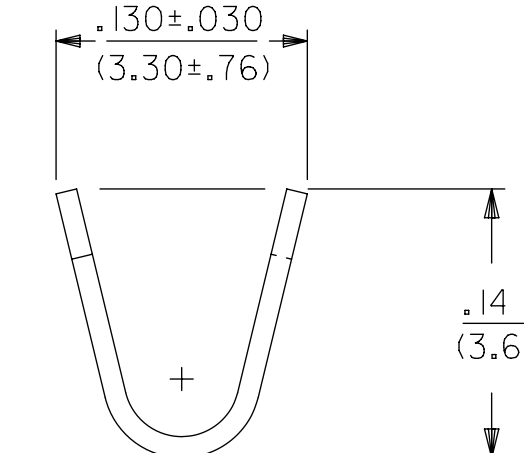
WINDING DETAIL "B"



PAPER  
INTERLEAF



SECTION A-A



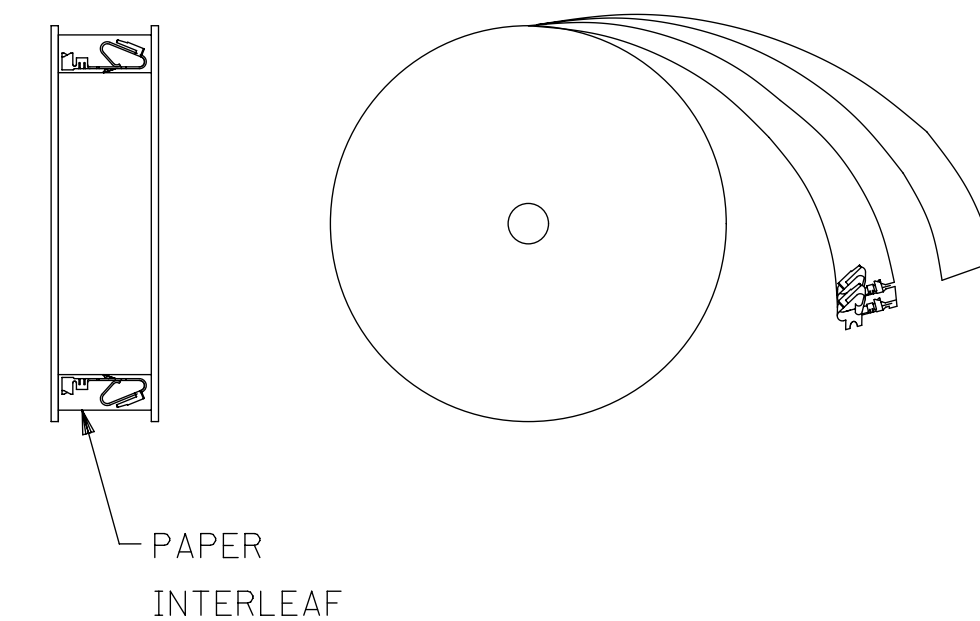
LEGEND: 6838-\*(\*)\*\*

MATERIAL:  
(.27)/.0106 THK  
BLANK=BRASS  
A=PHOS BRONZE

WINDING  
A= PER DETAIL A  
BLANK= PER DETAIL B  
FORM  
BLANK= CHAIN  
L= LOOSE

PLATING  
SEE NOTE 2

- NOTES:
1. MATERIAL: SEE LEGEND
  2. FINISH:  
909 - OVERALL HOT TIN DIP: .000100/(0.00254) MIN.  
154 - OVERALL TIN: .000100/(0.00254) MIN. OVER  
.000050/(0.00127) MIN. NICKEL.  
555 - SELECT HARD GOLD: .000015/(0.00038) MIN.  
OVERALL NICKEL: .000030/(0.00076) MIN.  
558 - SELECT HARD GOLD: .000030/(0.00076) MIN.  
OVERALL NICKEL: .000050/(0.00127) MIN.  
OVERALL HARD GOLD FLASH: .000002/(0.00005) MIN.  
561 - SELECT HARD GOLD: .000030/(0.00076) MIN.  
OVERALL NICKEL: .000050/(0.00127) MIN.
  3. PRODUCT SPECIFICATION: PS-40-02
  4. PACKAGING SPECIFICATION: CHAIN FORM: SEE PK-2759-002  
LOOSE FORM: SEE PK-2759-001
  5. TERMINAL FOR USE IN HOUSING SERIES 6442 AND 41695.
  6. SEE 7258 SERIES FOR THIS PART WITH CRIMP FOR 22-26 AWG. WIRE.
  7. CRIMP FOR 18 TO 20 GA. WIRE WITH MAX. INSULATION DIA. OF .100/(2.79),  
STRIP LENGTH OF .125/.100 / (3.18/2.54)
  8. DIMENSIONS GIVEN ACROSS CENTERLINES ARE SYMMETRICAL ABOUT  
THOSE CENTERLINES WITHIN HALF THE TOTAL TOLERANCE.
  9. THIS PART CONFORMS TO CLASS B REQUIREMENTS OF COSMETIC SPECIFICATION PS-45499-002.
  10. ALTERNATE GEOMETRY PRESENT ON SOME PART NUMBERS. SEE SHEET 2.
  11. TEXT ON PART IS FOR REFERENCE ONLY. TEXT AND TEXT LOCATION MAY VARY  
DEPENDING ON PART NUMBER AND/OR TOOL.



PAPER  
INTERLEAF

SYMBOLS										THIS DRAWING CONTAINS INFORMATION THAT IS PROPRIETARY TO MOLEX ELECTRONIC TECHNOLOGIES, LLC AND SHOULD NOT BE USED WITHOUT WRITTEN PERMISSION																			
DIMENSION UNITS					SCALE					CURRENT REV DESC: NOTE 4 UPDATED																			
IN/MM					1:1																								
GENERAL TOLERANCES (UNLESS SPECIFIED)																													
4 PLACES ±					±					EC NO: 605479																			
3 PLACES ±					± 0.01					DRWN: SS06 2018/09/17																			
2 PLACES ±					± 0.25 ± 0.015					CHK'D: ISHWARG 2018/10/05																			
1 PLACE ±					± 0.36 ±					APPR: ISHWARG 2018/10/05																			
0 PLACES ±					±					INITIAL REVISION:																			
ANGULAR TOL ± 0.5°										DRWN: GUZIK 1989/11/15																			
DRAFT WHERE APPLICABLE MUST REMAIN WITHIN DIMENSIONS					THIRD ANGLE PROJECTION					APPR: LENZ 1989/11/15																			
					D-DRAWING					SERIES					MATERIAL NUMBER					CUSTOMER					SHEET NUMBER				
					D-SIZE					6838					SEE CHART					GENERAL MARKET					1 OF 2				

**molex**

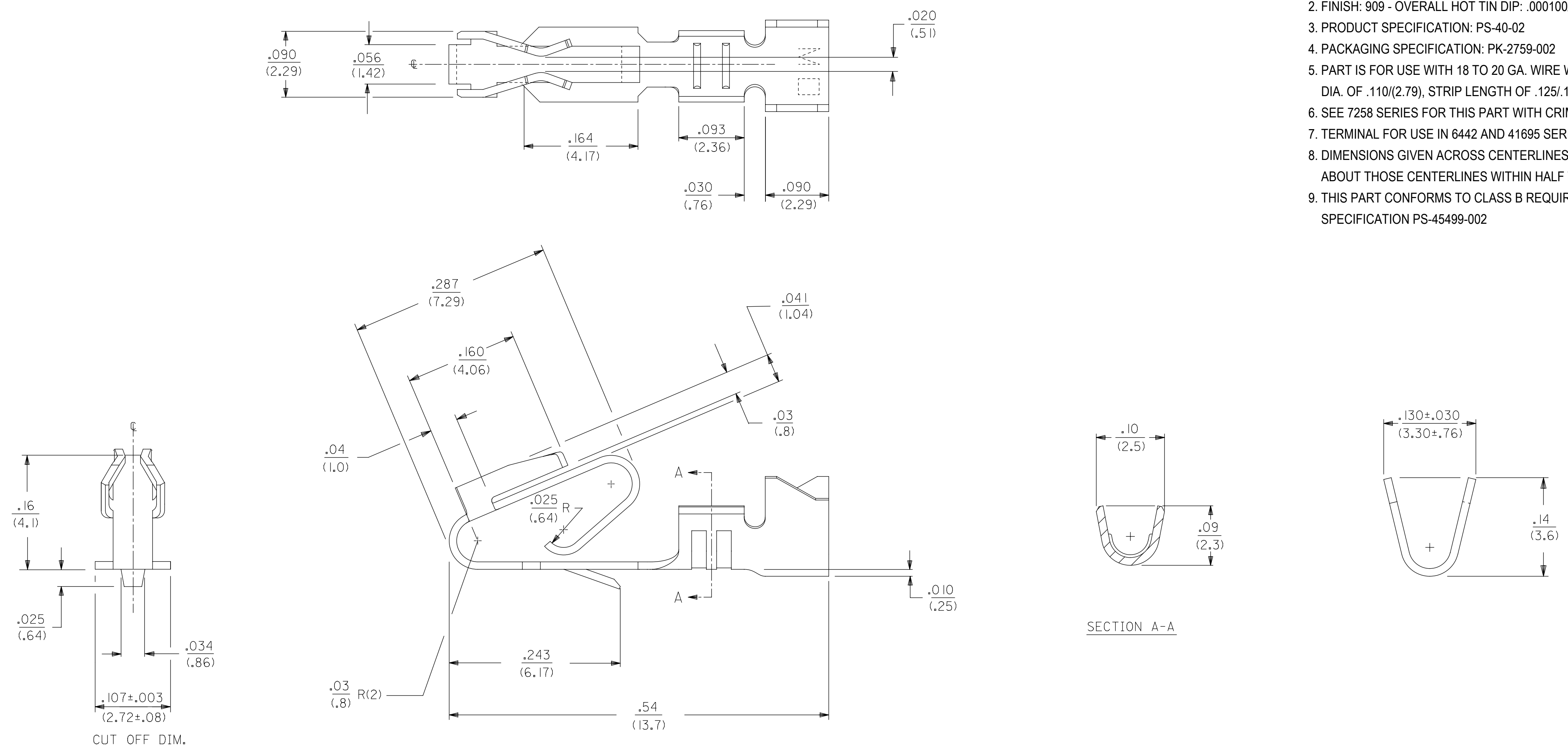
TRIFURCON TERMINAL  
CRIMP TYPE, .156 CENTERS 18 TO 20 AWG WIRE

PRODUCT CUSTOMER DRAWING

DOCUMENT NUMBER: SD-6838  
DOC TYPE: PSD  
DOC PART: 001  
REVISION: AT



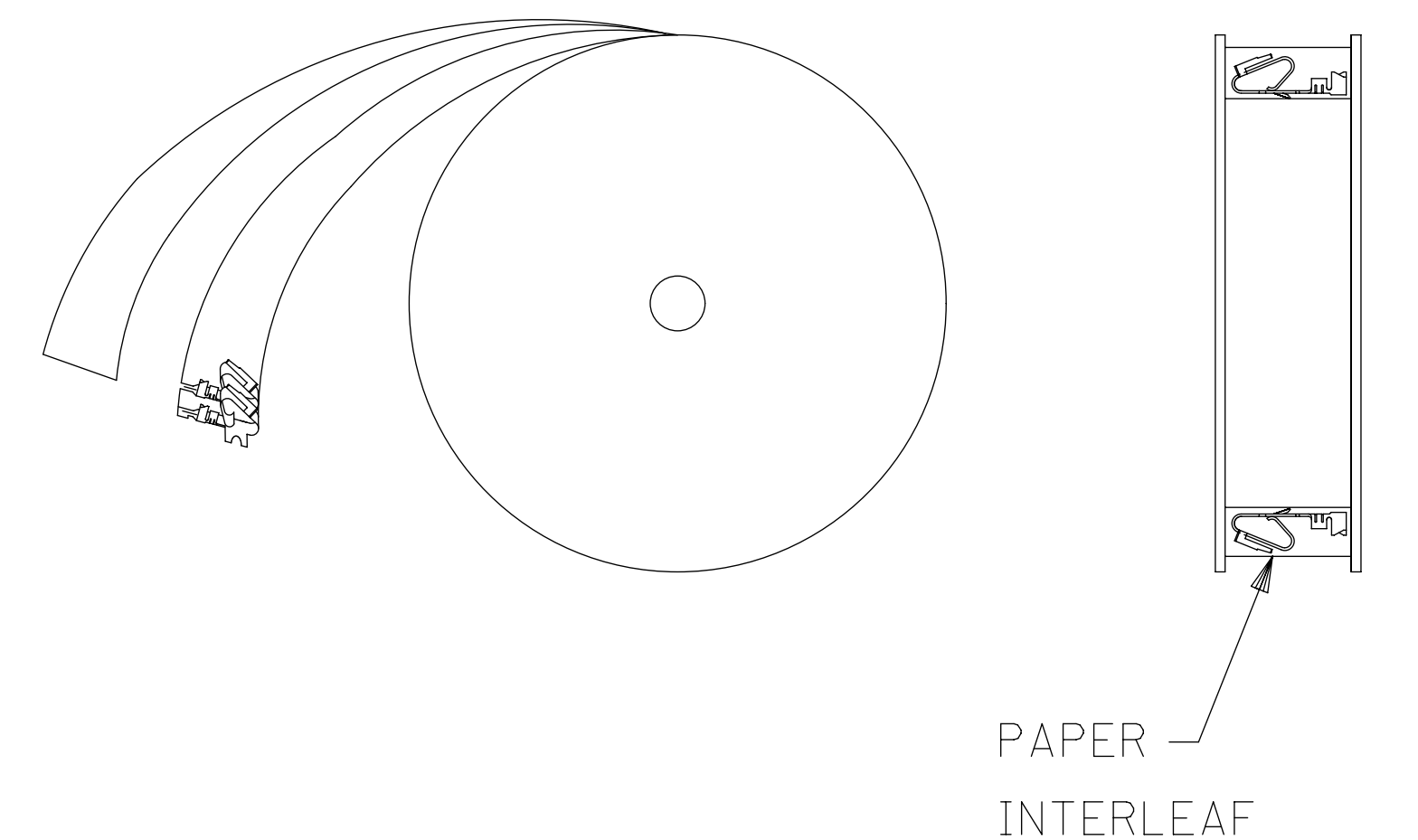
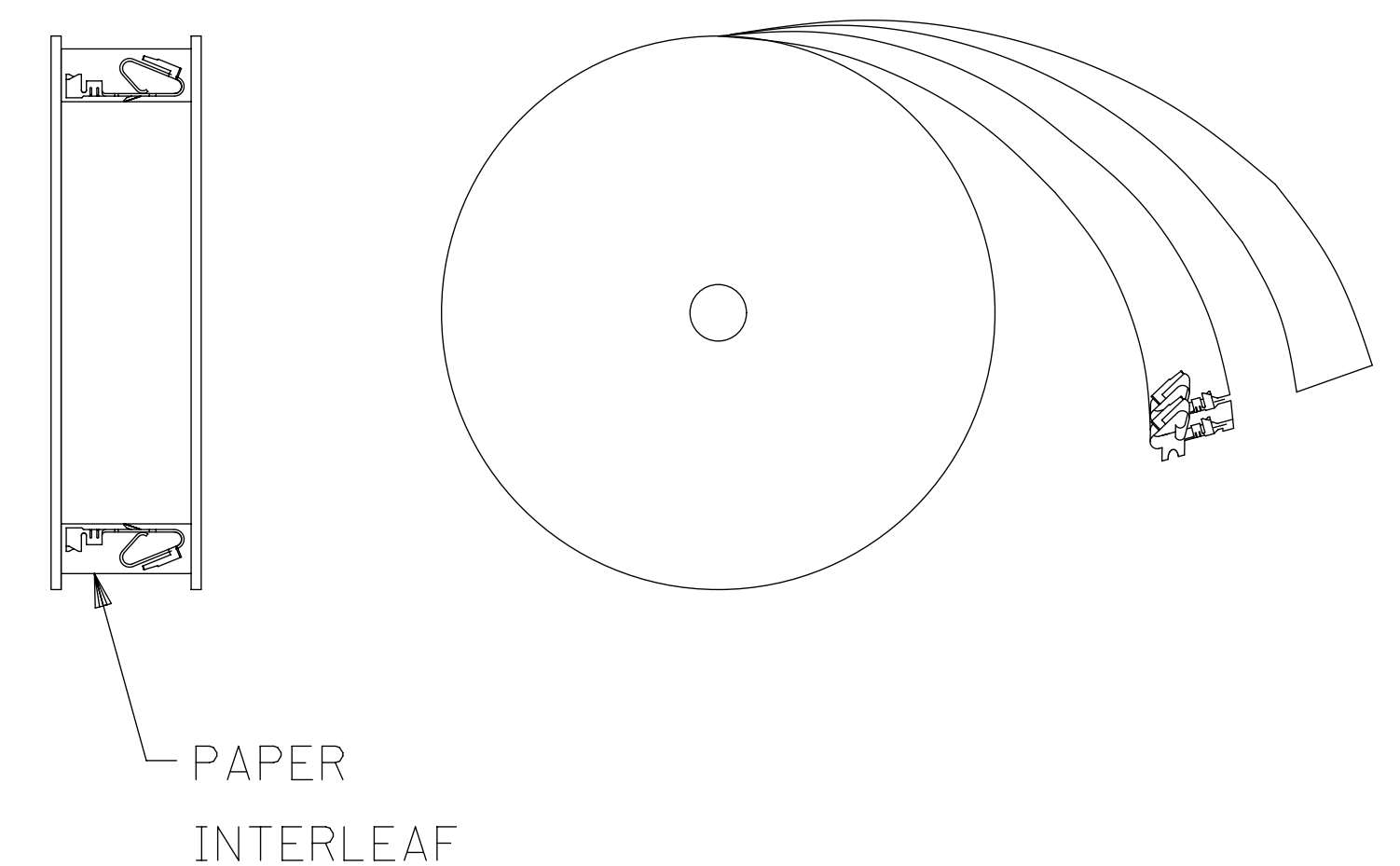
- NOTES:
1. MATERIAL: SEE LEGEND
  2. FINISH: 909 - OVERALL HOT TIN DIP: .000100/(0.00254) MIN.
  3. PRODUCT SPECIFICATION: PS-40-02
  4. PACKAGING SPECIFICATION: PK-2759-002
  5. PART IS FOR USE WITH 18 TO 20 GA. WIRE WITH MAX. INSULATION DIA. OF .110/(2.79), STRIP LENGTH OF .125/.100 / (3.18/2.54)
  6. SEE 7258 SERIES FOR THIS PART WITH CRIMP FOR 22-26 AWG. WIRE
  7. TERMINAL FOR USE IN 6442 AND 41695 SERIES HOUSINGS
  8. DIMENSIONS GIVEN ACROSS CENTERLINES ARE SYMMETRICAL ABOUT THOSE CENTERLINES WITHIN HALF THE TOTAL TOLERANCE
  9. THIS PART CONFORMS TO CLASS B REQUIREMENTS OF COSMETIC SPECIFICATION PS-45499-002



LEGEND: 6838-\*(P909)\*  
 MATERIAL: (27)/.0106 THK  
 BLANK=BRASS  
 WINDING  
 BLANK= PER DETAIL B  
 FORM  
 BLANK= CHAIN  
 PLATING PER SDES-88  
 SEE NOTE 2

WINDING DETAIL "A"

WINDING DETAIL "B"



THIS DRAWING CONTAINS INFORMATION THAT IS PROPRIETARY TO MOLEX ELECTRONIC TECHNOLOGIES, LLC AND SHOULD NOT BE USED WITHOUT WRITTEN PERMISSION									
SYMBOLS		DIMENSION UNITS		SCALE		CURRENT REV DESC: NOTE 4 UPDATED			
▽ = 0		IN/MM		1:1		EC NO: 605479			
▽ = 0		GENERAL TOLERANCES (UNLESS SPECIFIED)				DRWN: SS06		2018/09/12	
▽ = 0						CHK'D: ISHWARG		2018/10/05	
▽ = 0		4 PLACES ±		±		APPR: ISHWARG		2018/10/05	
▽ = 0		3 PLACES ±		± 0.01		INITIAL REVISION:			
▽ = 0		2 PLACES ±		0.25 ± 0.015		DRWN: JJS		2004/07/29	
▽ = 0		1 PLACE ±		0.36 ±		APPR: YM		2004/07/29	
▽ = 0		0 PLACES ±		±		DOCUMENT NUMBER			
▽ = 0		ANGULAR TOL ± 0.5°				D-DRAWING		SERIES	
▽ = 0		DRAFT WHERE APPLICABLE MUST REMAIN WITHIN DIMENSIONS		THIRD ANGLE PROJECTION		D-SIZE		6838	
▽ = 0						MATERIAL NUMBER		CUSTOMER	
▽ = 0						50291639		GENERAL MARKET	
▽ = 0						SHEET NUMBER		1 OF 1	

**molex**


TRIFURCON TERMINAL  
 CRIMP TYPE, .156 CENTERS 18 TO 20 AWG WIRE

PRODUCT CUSTOMER DRAWING

DOCUMENT NUMBER	DOC TYPE	DOC PART	REVISION
SD-6838-001	PSD	001	C1

## Looking for pricing, stock, or lifecycle information?

Click below to explore more details on WIN SOURCE:

 [View 8520112 on WIN SOURCE](#)

 [Molex, LLC Information](#)

## Optimize Your Supply Chain with WIN SOURCE Solutions

-  Global Sourcing Solution
-  Obsolete Management
-  Cost Control Management
-  Shortage Management
-  Alternative Solution
-  Excess Inventory Management