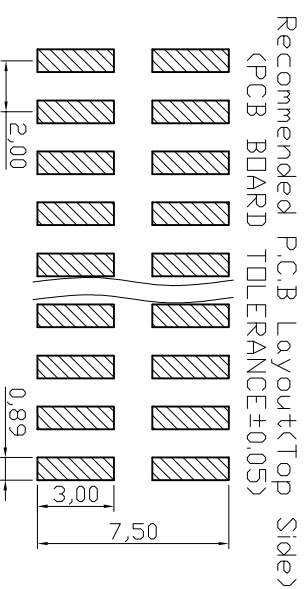
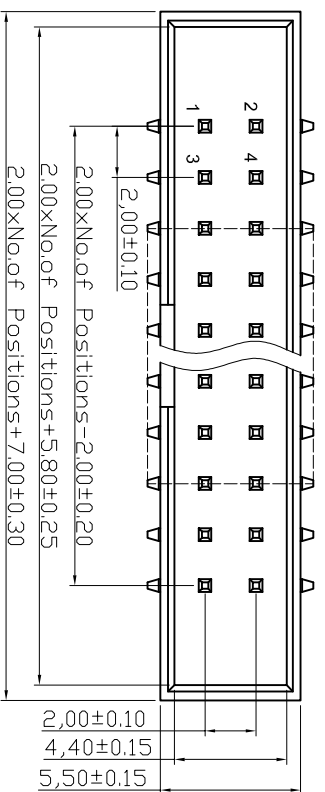




**THE DATASHEET OF  
AWHW2-14G-SMD-R**





**NOTES:**

**MATERIAL**

④ 1. Insulator Material: PA9T+30%GF(UL94V-0), Black

2. Contact Material : Brass

3. Contact Plating : Gold flash Over 50µ"Ni

**ELECTRICAL**

1. Current Rating : 1.5AMP

2. Withstand Voltage : 500V AC/DC

3. Contact Resistance : 20mΩ max

4. Insulation Resistance: 1000MΩ min

**ENVIRONMENTAL**

1. Operation Temperature: -40°C to +105°C

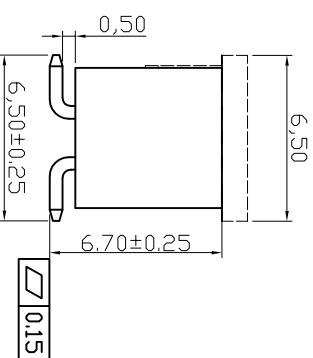
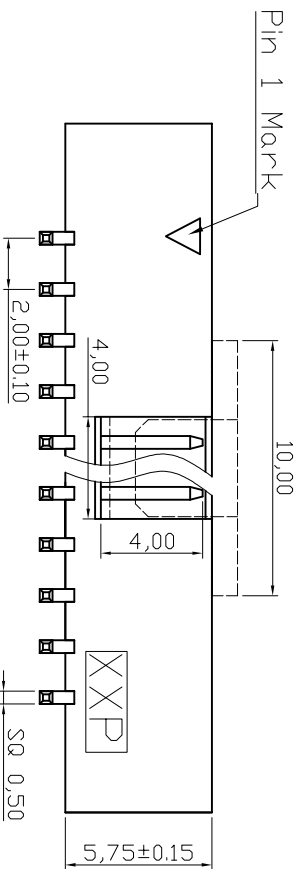
2. Packing :

AWHW xxxG-SMD-200: Tube + Cap ③

AWHW xxxG-SMD-200-R: Tape&Reel + Cap

**Order Information :**

xx: 10,14,16,20,24,26,30,34,40,44,50,60



**RoHS compliant**  
Unit:mm

| Scale     | Free  | Customer-No.  |              |
|-----------|-------|---------------|--------------|
| TOLERANCE |       | Drawn         | Date         |
| X.X       | ±0.40 | 25.01.2006    | Alex         |
| X.XX      | ±0.25 | Approved      | 22.03.2016   |
| X.XXX     | ±0.15 | ③ Add new P/N | Lucas        |
| Angle°    | ±3°   | ② Update      | 29.06.2009   |
|           |       | ① Drawn       | 25.01.2006   |
|           |       | Id.           | Modification |



ASSMANN WSW-No. AWHW xxxG-SMD-200  
③ AWHW xxxG-SMD-200-R

Drawing-No. ASS 2319 CO rev04

Replace Sheet

1 2 3 4 5 6 7

SVxxx

## Looking for pricing, stock, or lifecycle information?

Click below to explore more details on WIN SOURCE:

- ⊖ [View AWHW2-14G-SMD-R on WIN SOURCE](#)
- ⊖ [Assmann WSW Components](#) Information

## Optimize Your Supply Chain with WIN SOURCE Solutions

- ✓ Global Sourcing Solution
- ✓ Obsolete Management
- ✓ Cost Control Management
- ✓ Shortage Management
- ✓ Alternative Solution
- ✓ Excess Inventory Management