

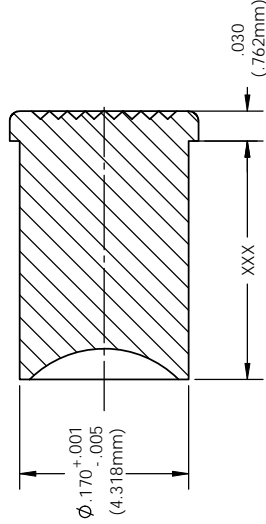
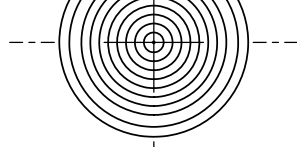
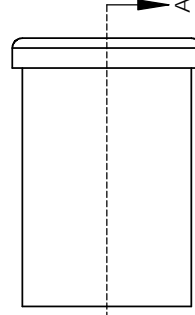
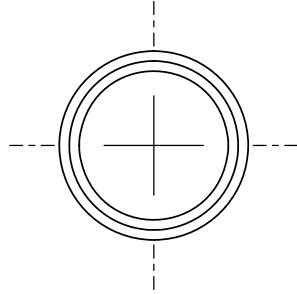
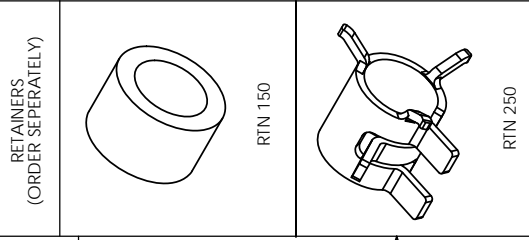


THE DATASHEET OF LPC_120_CTP



NOTES:

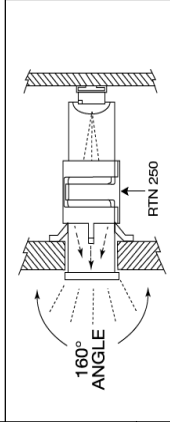
1. MOUNTING: Panel mounting hole .171" (4.34mm) Diameter Litepipe from .200" to .500" use grommet retainer RTN 150 Litepipe from .500" to 2.00" the spring retainer RTN 250 is recommended for rigidity
2. Standoff used to adjust the height of a standard LED above the PCB to maintain a maximum .050" clearance between Litepipe and LED.
3. U.S. & Foreign Pat Issued & Pend.



ORDERING CODE: **LPC XXX CTP**

LENGTH CODE (Min 020=.200" / Max 200=2.000")	
020	038
022	040
024	042
026	044
028	046
030	048
032	050
034	052
036	054
074	092
094	112
115	137
137	160
140	162
142	165
145	167
147	170
152	175
155	177
177	200

COLOR	
CTP	
CLEAR	



SPECIAL LENGTHS UPON REQUESTS

ECN #	REV	INITIA
	N/A	UPDA
	1	REVIS
	2	REVIS
	001	REVIS

UNLESS OTHERWISE SPECIFIED DIMENSIONS ARE IN INCHES ANGLES ±1° FINISH .XXX ±.005 TOLERANCES UNLESS OTHERWISE SPECIFIED	MATERIAL ACRYLIC (OPTICAL) UL-94HB
SEE NOTES	FINISH
APPROVAL	DRAWN
K.Howard	CHECKED
DPZ	DO NOT SCALE DRAWING

Looking for pricing, stock, or lifecycle information?

Click below to explore more details on WIN SOURCE:

- ⊖ [View LPC_120_CTP on WIN SOURCE](#)
- ⊖ [Visual Communications Company - VCC Information](#)

Optimize Your Supply Chain with WIN SOURCE Solutions

- ✓ Global Sourcing Solution
- ✓ Obsolete Management
- ✓ Cost Control Management
- ✓ Shortage Management
- ✓ Alternative Solution
- ✓ Excess Inventory Management