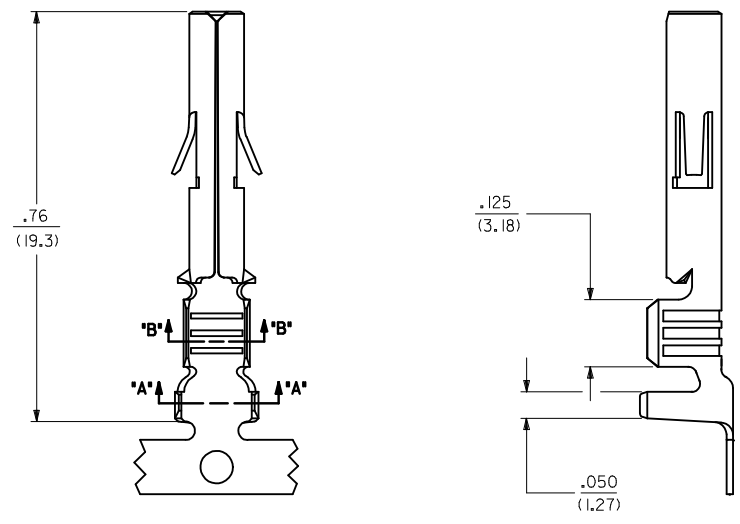
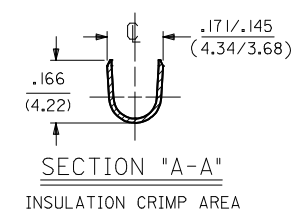
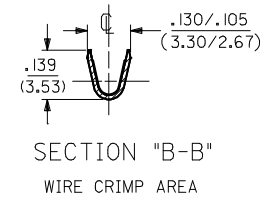
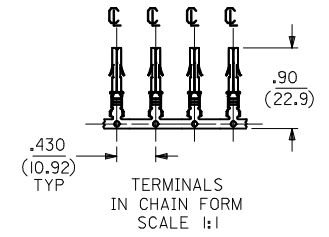
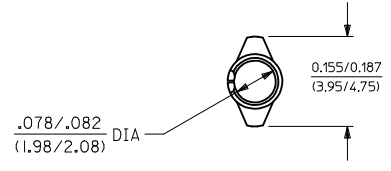


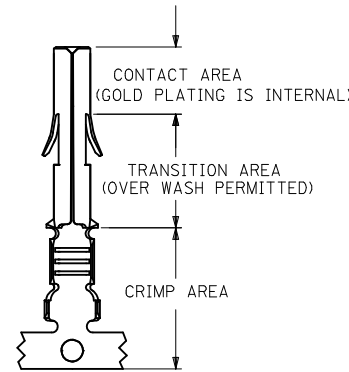
**SOCKET TERMINAL**  
42024-\*\*\*



SEE SHEET 2 FOR CHART, MATERIAL, PLATING, NOTES, AND CRIMP OPTIONS

DRAWING UPDATED EC NO: I2014-0115 CHIKD: DRWN:SS06 APPR:KPRASAD 2014/01/09 2014/01/13	QUALITY SYMBOLS ▽=0 ▽=0 ▽=0	GENERAL TOLERANCES (UNLESS SPECIFIED)		DIMENSION STYLE IN/MM		SCALE ---	DESIGN UNITS INCH	THIRD ANGLE PROJECTION
		4 PLACES ± --- ± ---	mm INCH	DRAWN BY SUDHIR	DATE 2004/09/27	TITLE TERMINAL, SOCKET 84/(2.13) DIA. SERIES		
		3 PLACES ± --- ± .010		CHECKED BY KPRASAD	DATE 2004/09/27	MATERIAL NO. DOCUMENT NO.		
		2 PLACES ± 0.25 ± .015		APPROVED BY KPRASAD	DATE 2004/09/27			SHEET NO. 1 OF 2
1 PLACE ± 0.38 ± ---		ANGULAR ±1/2°		SEE CHART		SD-42024-****		
0 PLACE ± ±		DRAFT WHERE APPLICABLE MUST REMAIN WITHIN DIMENSIONS		SIZE A2	THIS DRAWING CONTAINS INFORMATION THAT IS PROPRIETARY TO MOLEX INCORPORATED AND SHOULD NOT BE USED WITHOUT WRITTEN PERMISSION			

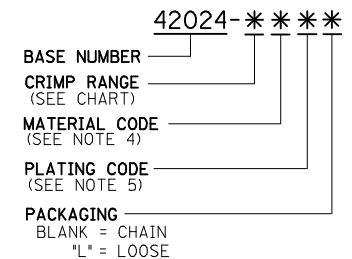
ENG. NO.	EDP NO.	FINISH (REF)	CONTACT AREA (REF)	CRIMP AREA (REF)	MATERIAL (REF)	WIRE SIZE	INSULATION DIA.	STATUS
42024-IA1	002-08-1001	SDES-88-P901	----	----	C26000	#14-#20 AWG	.060-.130	ACTIVE
42024-IAL	002-08-1002	SDES-88-P901	----	----	C26000	#14-#20 AWG	.060-.130	ACTIVE
42024-IB1	002-08-1003	SDES-88-P901	----	----	C51000	#14-#20 AWG	.060-.130	ACTIVE
42024-IBL	002-08-1004	SDES-88-P901	----	----	C51000	#14-#20 AWG	.060-.130	ACTIVE
42024-IA2	002-08-1005	SEE NOTE 5	.000030 MIN GOLD	.000100 MIN MATTE TIN	C26000	#14-#20 AWG	.060-.130	NOT TOOLED
42024-IA2L	002-08-1006	SEE NOTE 5	.000030 MIN GOLD	.000100 MIN MATTE TIN	C26000	#14-#20 AWG	.060-.130	NOT TOOLED
42024-IB2	002-08-1007	SEE NOTE 5	.000030 MIN GOLD	.000100 MIN MATTE TIN	C51000	#14-#20 AWG	.060-.130	NOT TOOLED
42024-IB2L	002-08-1008	SEE NOTE 5	.000030 MIN GOLD	.000100 MIN MATTE TIN	C51000	#14-#20 AWG	.060-.130	NOT TOOLED



### PLATING REGIONS

APPLIES TO GOLD PLATED  
TERMINALS ONLY

### LEGEND:




#### NOTES:

- SOCKET TERMINALS FOR USE WITH THE .084/(2.13) SERIES HOUSINGS:
  - PLUG (42021-\*\*) CAP (42022-\*\*)
- SOCKET TERMINALS MATE WITH PIN TERMINALS: .084/(2.13) DIA. SERIES (42023-\*\*\*\*).
- TERMINALS FINISHED IN CHAIN UNLESS SPECIFIED LOOSE. "L" SUFFIX INDICATES LOOSE FORM. (SEE TABLE)
- MATERIAL: .012/(0.30) THICK STRIP:
  - A = BRASS, #C26000, PER SMES-124-C7.
  - B = PHOSPHOR BRONZE, #C51000, PER SMES-124-E7.
- FINISH:
  - 1 = HOT TIN DIP 20 m.l./(.051 MICRONS) MINIMUM (PER SDES-88-P901).
  - 2 = 30 (M.I) / 0.75 MICRONS) MIN SELECT GOLD AND 100 (M.I) (2.50 MICRON) MIN SELECT TIN (MATTE) OVER 50 (M.I) (1.25 MICRONS) MIN NICKEL OVERALL
- CRIMP RANGE: SEE CHART.
- PRODUCT SPECIFICATION PS-42022-0001 APPLIES.

<b>DRAWING UPDATED</b> EC NO: 12014-0115 DRWN:SS06 CHKD: APPR:KPRASAD REV:	2014/01/09 2014/01/13 DESCRIPTION	QUALITY SYMBOLS	GENERAL TOLERANCES (UNLESS SPECIFIED)		DIMENSION STYLE	SCALE	DESIGN UNITS	THIRD ANGLE PROJECTION
		$\nabla=0$ $\nabla=0$ $\nabla=0$	mm	INCH	IN/MM	---	INCH	
		4 PLACES ± --- ± --- 3 PLACES ± --- ± --- 2 PLACES ± --- ± --- 1 PLACE ± --- ± --- 0 PLACE ± ±	DRAWN BY: SUDHIR DATE: 2004/09/27 CHECKED BY: KPRASAD DATE: 2004/09/27 APPROVED BY: KPRASAD DATE: 2004/09/27		TITLE: TERMINAL, SOCKET 84/(2.13) DIA. SERIES			
ANGULAR ± ---° DRAFT WHERE APPLICABLE MUST REMAIN WITHIN DIMENSIONS		MATERIAL NO. SEE CHART		DOCUMENT NO. SD-42024-****		SHEET NO. 2 OF 2		
THIS DRAWING CONTAINS INFORMATION THAT IS PROPRIETARY TO MOLEX INCORPORATED AND SHOULD NOT BE USED WITHOUT WRITTEN PERMISSION								

## Looking for pricing, stock, or lifecycle information?

Click below to explore more details on WIN SOURCE:

 [View 2081003 on WIN SOURCE](#)

 [Molex, LLC Information](#)

## Optimize Your Supply Chain with WIN SOURCE Solutions

-  Global Sourcing Solution
-  Obsolete Management
-  Cost Control Management
-  Shortage Management
-  Alternative Solution
-  Excess Inventory Management