



**THE DATASHEET OF  
MPC9817SD**





The MPC9817 is a PLL-based clock generator specifically designed for Freescale Semiconductor Microprocessor and Microcontroller applications including the PowerPC and PowerQUICC. This device generates the microprocessor input clock and other microprocessor system and bus clocks at any one of four output frequencies. These frequencies include the popular 33- and 66-MHz PCI bus frequencies. The device offers five low-skew clock outputs plus three reference outputs. The clock input reference is 25 MHz and may be derived from an external source or by the addition of a 25-MHz crystal to the on-chip crystal oscillator. The extended temperature range of the MPC9817 supports telecommunication and networking requirements.

**Features**

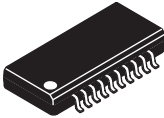
- 5 LVCMOS Outputs for Processor and Other System Circuitry
- 3 Buffered 25-MHz Reference Clock Outputs
- Crystal Oscillator or External Reference Input
- 25-MHz Input Reference Frequency
- Selectable Output Frequencies Include: 25, 33, 50, or 66 MHz
- Low Cycle-to-Cycle and Period Jitter
- Package: 20-Lead SSOP
- 3.3-V Supply
- Supports Computing, Networking, and Telecommunications Applications
- Ambient Temperature Range: -40°C to +85°C
- **NOT RECOMMENDED FOR NEW DESIGNS**

**Functional Description**

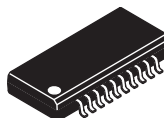
The MPC9817 uses a PLL with a 25-MHz input reference frequency to generate a single bank of five configurable LVCMOS output clocks. The output frequency of this bank is configurable to either 25, 33, 50, or 66 MHz by two FSEL pins. The 25-MHz reference may be either an external frequency source or a 25-MHz crystal. The 25-MHz crystal is directly connected to the XTAL\_IN and XTAL\_OUT pins with no additional components required. An external reference may be applied to the XTAL\_IN pin with the XTAL\_OUT pin left floating. The input reference, whether provided by a crystal or an external input, is also directly buffered to a second bank of three LVCMOS outputs. These outputs may be used as the clock source for processor I/O applications such as an Ethernet PHY. When FSEL0 and FSEL1 are both configured low, the QA outputs are directly fed from the input reference providing a total of eight low-skew 25-MHz outputs. For all other combinations of FSEL0 and FSEL1 the single-ended LVCMOS outputs provide five low-skew outputs for use in driving a microprocessor or microcontroller clock input as well as other system components.

The MPC9817 is packaged in a 20-lead SSOP package.

**MICROPROCESSOR  
CLOCK GENERATOR**



**SD SUFFIX  
20 SSOP PACKAGE  
CASE 1461-01**



**EN SUFFIX  
20 SSOP PACKAGE  
Pb-FREE PACKAGE  
CASE 1461-01**

ORDERING INFORMATION	
Device	Package
MPC9817SD	SSOP-20, Tube
MPC9817SDR2	SSOP-20, Tape & Reel
MPC9817EN	SSOP-20 (Pb-Free), Tube
MPC9817ENR2	SSOP-20 (Pb-Free), Tape & Reel

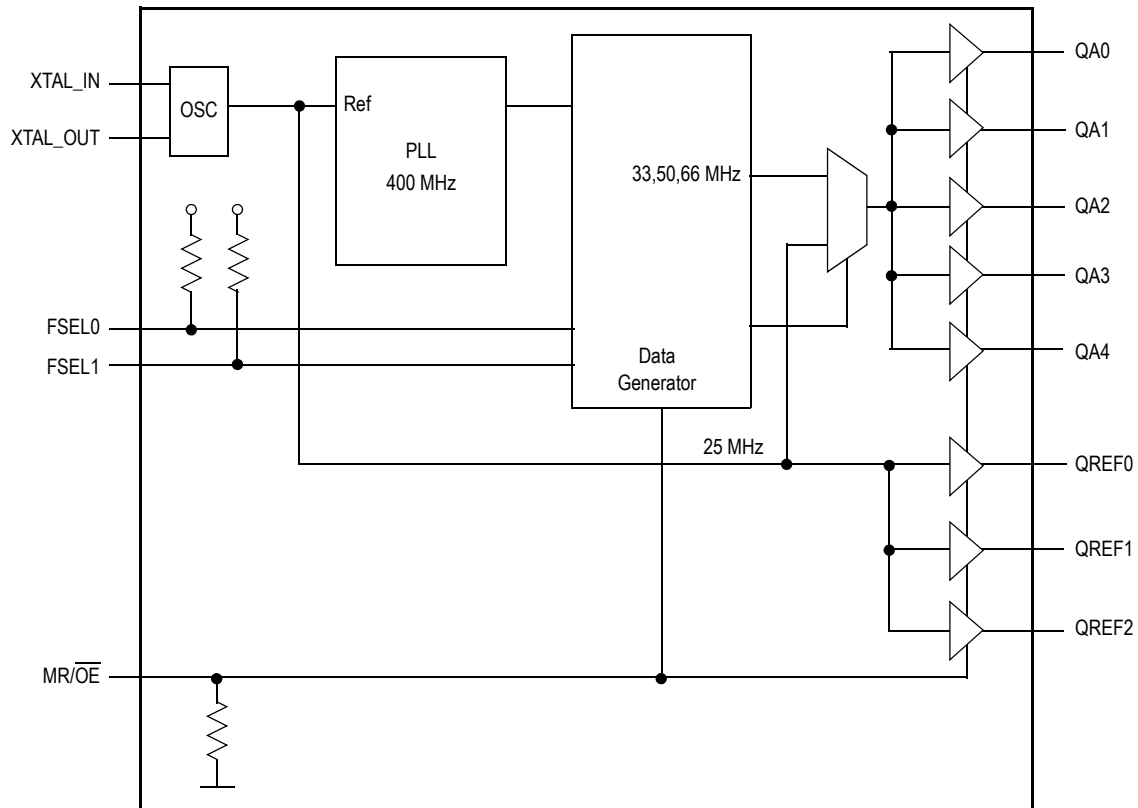


Figure 1. MPC9817 Logic Diagram

Table 1. Pin Configurations

Pin	I/O	Type	Function
QA0, QA1, QA2, QA3, QA4	Output	LVC MOS	Clock Outputs
QREF0, QREF1, QREF2	Output	LVC MOS	Reference Output (25 MHz)
XTAL_IN	Input	LVC MOS	Crystal Oscillator Input Pin
XTAL_OUT	Output	LVC MOS	Crystal Oscillator Output Pin
FSEL0, FSEL1	Input	LVC MOS	Configures Bank A Clock Output Frequency (pull-up)
MR/OE	Input	LVC MOS	Enables All Outputs (pull-down)
V <sub>DD</sub>	—	—	3.3-V Supply
GND	—	—	Ground

Table 2. Function Table

Control	Default	00	01	10	11
FSEL0, FSEL1	11	25 MHz fed directly from reference input, PLL disabled	33 MHz	50 MHz	66 MHz

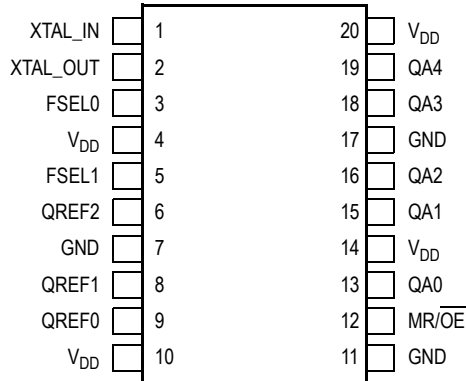


Figure 2. MPC9817 20-Lead SSOP Package Pinout (Top View)

## MPC9817 OPERATION

### Crystal Oscillator

The MPC9817 features a fully integrated Pierce oscillator to minimize system implementation costs. Other than the addition of a 25-MHz crystal, no external components are required. The crystal selection should be: 25 MHz, parallel resonant type with a load specification of  $C_L = 10$  pF. Crystals with a load specification of  $C_L = 20$  pF may be used, however, the reference frequency may be higher than the specified 25 MHz. Externally supplied capacitors on both the XTAL\_IN and XTAL\_OUT pins may be used to trim the frequency as desired.

The crystal should be located as close to the MPC9817 XTAL\_IN and XTAL\_OUT pins as possible to avoid any board level parasitic.

Table 3. Crystal Specifications

Parameter	Value
Crystal Cut	Fundamental AT Cut
Resonance	Parallel Resonance
Shunt Capacitance ( $C_L$ )	5–7 pF
Load Capacitance ( $C_O$ )	10 pF
Equivalent Series Resistance (ESR)	20–60 $\Omega$

### Power Supply Bypassing

The MPC9817 should have all V<sub>DD</sub> pins bypassed with 0.01 capacitors and a minimum of one 1.0 capacitor for the overall package. All capacitors should be located as close to the SSOP pins as possible.

### External Clock Source

An external reference source of 25 MHz may be applied to the XTAL\_IN pin. In this mode of operation, the XTAL\_OUT pin should be left floating.

**Table 4. Absolute Maximum Ratings<sup>(1)</sup>**

Symbol	Characteristics	Min	Max	Unit
V <sub>DD</sub>	Supply Voltage	-0.3	3.8	V
I <sub>IN</sub>	DC Input Current	—	±20	mA
I <sub>OUT</sub>	DC Output Current	—	±75	mA
T <sub>S</sub>	Storage Temperature	-65	125	°C

1. Absolute maximum continuous ratings are those maximum values beyond which damage to the device may occur. Exposure to these conditions or conditions beyond those indicated may adversely affect device reliability. Functional operation at absolute-maximum-rated conditions is not implied.

**Table 5. General Specifications**

Symbol	Characteristics	Min	Typ	Max	Unit	Condition
V <sub>TT</sub>	Output Termination Voltage	—	V <sub>DD</sub> ÷ 2	—	V	—
MM	ESD Protection (machine model)	200	—	—	V	—
HBM	ESD Protection (human body model)	2000	—	—	V	—
LU	Latch-Up Immunity	200	—	—	mA	—
C <sub>IN</sub>	Input Capacitance	—	4	—	pF	Inputs
θ <sub>JA</sub>	Thermal Resistance (junction-to-ambient)	—	80.8	—	°C/W	—
T <sub>C</sub>	Ambient Temperature	-40	—	85	°C	—

**Table 6. DC Characteristics** (V<sub>DD</sub> = 3.3 V ± 5%, T<sub>A</sub> = -40° to +85°C)

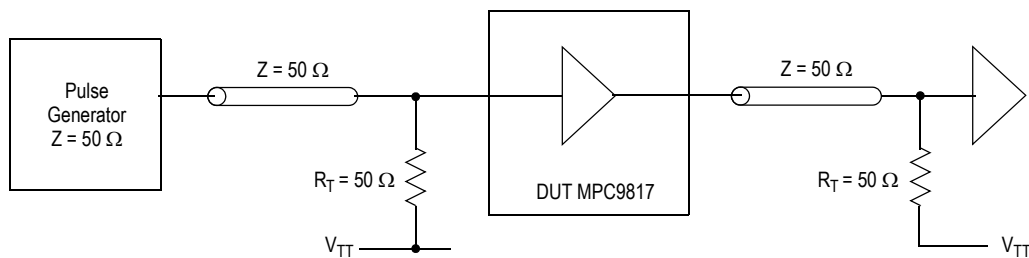
Symbol	Characteristics	Min	Typ	Max	Unit	Condition
V <sub>IH</sub>	Input High Voltage (XTAL_IN)	2.4	—	V <sub>DD</sub> + 0.3	V	Input threshold = V <sub>DD</sub> /2
V <sub>IH</sub>	Input High Voltage	2.0	—	V <sub>DD</sub> + 0.3	V	—
V <sub>IL</sub>	Input Low Voltage	—	—	0.8	V	LVC MOS
I <sub>IN</sub>	Input Current <sup>(1)</sup>	—	—	150	μA	V <sub>IN</sub> = V <sub>DDL</sub> or GND
V <sub>OH</sub>	Output High Voltage	2.4	—	—	V	I <sub>OH</sub> = -12 mA
V <sub>OL</sub>	Output Low Voltage	—	—	0.4	V	I <sub>OL</sub> = 12 mA
Z <sub>OUT</sub>	Output Impedance	—	14	—	Ω	—
I <sub>DD</sub>	Maximum Quiescent Supply Current	—	8.0	15.0	mA	V <sub>DD</sub> pins

1. Inputs have pull-down resistors affecting the input current.

**Table 7. AC Characteristics<sup>(1) (2)</sup>** ( $V_{DD} = 3.3 \text{ V} \pm 5\%$ ,  $T_A = -40^\circ$  to  $+85^\circ\text{C}$ )

Symbol	Characteristics	Min	Typ	Max	Unit	Condition
Input and Output Timing Specification						
$f_{ref}$	Input Reference Frequency 25 MHz Input XTAL Input	—	25 25	—	MHz MHz	—
$f_{VCO}$	VCO Frequency Range	—	400	—	MHz	—
$f_{MCX}$	Output Frequency (QAx) FSEL0, FSEL1 = 00 FSEL0, FSEL1 = 01 FSEL0, FSEL1 = 10 FSEL0, FSEL1 = 11 Output Frequency (QREFx)	—	25 33 50 66 25	—	MHz MHz MHz MHz MHz	PLL locked
$f_{refPW}$	Reference Input Pulse Width	10	—	—	ns	@ 25 MHz
DC	Output Duty Cycle	47.5	50	52.5	%	—
$f_{out}$	Output Frequency Accuracy Crystal <sup>(3)</sup> External Reference	—	—	100 0	ppm ppm	With recommended crystal see <a href="#">Table 3</a>
PLL Specifications						
BW	PLL Closed Loop Bandwidth <sup>(4)</sup>	—	500	—	kHz	—
$t_{LOCK}$	Maximum PLL Lock Time	—	—	10	ms	—
Skew and Jitter Specifications						
$t_{sk(O)}$	Output-to-Output Skew (within a bank)	—	—	100	ps	—
$t_{sk(O)}$	Output-to-Output Skew (between bank A and bank Ref)	—	—	200	—	FSEL0, FSEL1 = 00
$t_{JIT(CC)}$	Cycle-to-Cycle Jitter	—	—	150	ps	@ 25 MHz Input Reference Q <sub>A</sub> output
$t_{JIT(PER)}$	Period Jitter	—	—	100	ps	@ 25 MHz Input Reference Q <sub>A</sub> output
$t_r, t_f$	Output Rise/Fall Time	—	—	1	ns	20% to 80%

1. AC characteristics are design targets and pending characterization.
2. AC characteristics apply for parallel output termination of  $50 \Omega$  to  $V_{TT}$ .
3. Based upon recommended crystal specifications as outlined in [MPC9817 Operation](#).
4.  $-3 \text{ dB}$  point of PLL transfer characteristics.

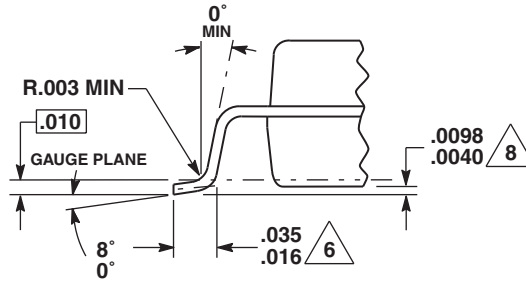
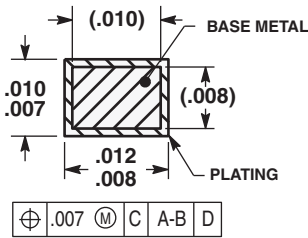
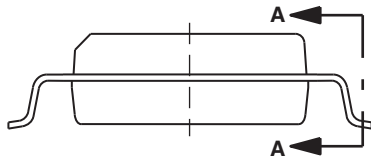
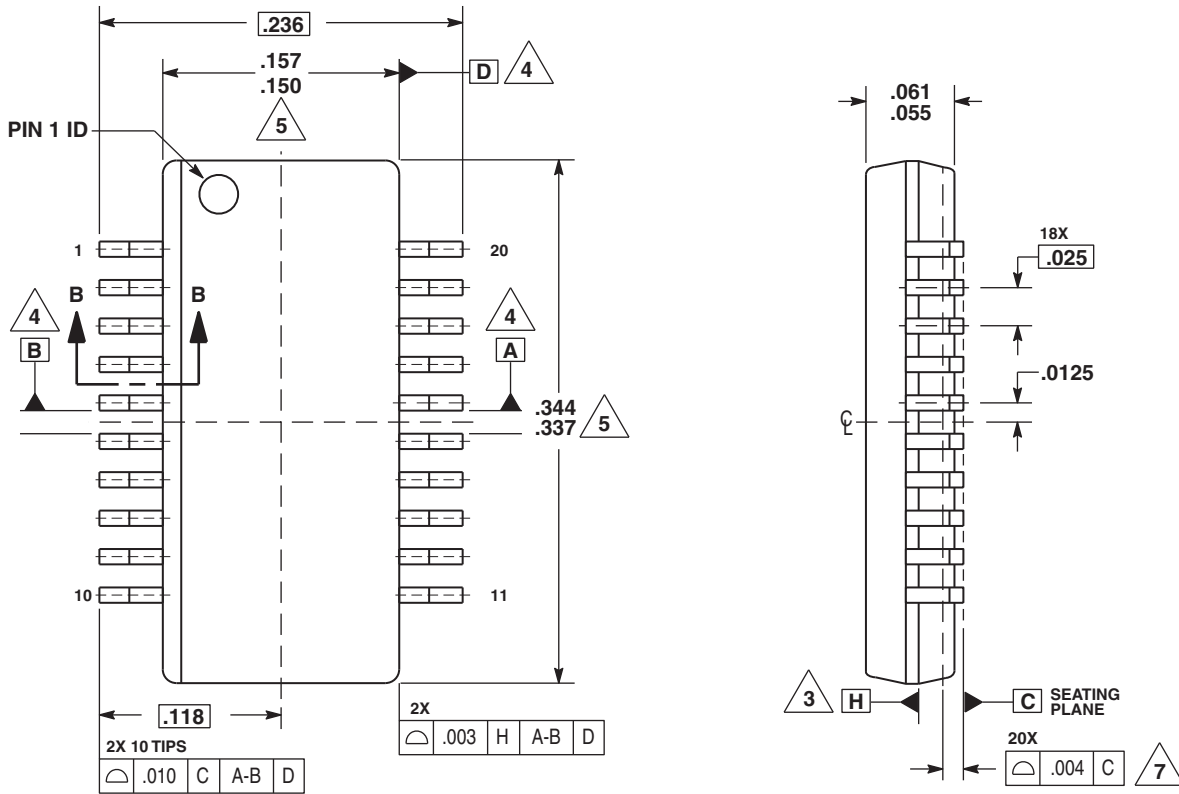
**Figure 3. MPC9817 AC Test Reference (LVCMOS Outputs)**

**Table 8. MPC9817 Pin List**

Pin	Description
1	XTAL_IN
2	XTAL_OUT
3	FSEL0
4	V <sub>DD</sub>
5	FSEL1
6	QREF2
7	GND
8	QREF1
9	QREF0
10	V <sub>DD</sub>

Pin	Description
11	GND
12	MR/ $\overline{OE}$
13	QA0
14	V <sub>DD</sub>
15	QA1
16	QA2
17	GND
18	QA3
19	QA4
20	V <sub>DD</sub>

**PACKAGE DIMENSIONS**



- NOTES:
1. DIMENSIONS ARE IN INCHES.
  2. DIMENSIONING AND TOLERANCING PER ASME Y14.5M, 1994.
  3. DATUM PLANE H LOCATED AT MOLD PARTING LINE AND COINCIDENT WITH LEAD, WHERE LEAD EXITS PLASTIC BODY AT BOTTOM OF PARTING LINE.
  4. DATUM A, B AND D TO BE DETERMINED WHERE CENTERLINE BETWEEN LEADS EXITS PLASTIC BODY AT DATUM PLANE H.
  5. THIS DIMENSION DOES NOT INCLUDE MOLD FLASH OR PROTRUSIONS, BUT DO INCLUDE MOLD MISMATCH AND ARE MEASURED AT THE MOLD PARTING LINE. MOLD FLASH OR PROTRUSIONS SHALL NOT EXCEED .006 INCHES FOR ENDS AND .008 INCHES FOR SIDES.
  6. THIS DIMENSION IS LENGTH OF TERMINAL FOR SOLDERING A SUBSTRATE.
  7. FORMED LEADS SHALL BE PLANAR WITH RESPECT TO ONE ANOTHER WITHIN .004 INCHES AT SEATING PLANE.
  8. THIS DIMENSION IS DEFINED AS THE DISTANCE FROM THE SEATING PLANE TO THE LOWEST POINT OF THE PACKAGE BODY.

**CASE 1461-02  
ISSUE O  
20 SSOP PACKAGE**

## We've Got Your Timing Solution



6024 Silver Creek Valley Road  
San Jose, California 95138

**Sales**  
800-345-7015 (inside USA)  
+408-284-8200 (outside USA)  
Fax: 408-284-2775  
[www.IDT.com/go/contactIDT](http://www.IDT.com/go/contactIDT)

**Technical Support**  
[netcom@idt.com](mailto:netcom@idt.com)  
+480-763-2056

DISCLAIMER Integrated Device Technology, Inc. (IDT) and its subsidiaries reserve the right to modify the products and/or specifications described herein at any time and at IDT's sole discretion. All information in this document, including descriptions of product features and performance, is subject to change without notice. Performance specifications and the operating parameters of the described products are determined in the independent state and are not guaranteed to perform the same way when installed in customer products. The information contained herein is provided without representation or warranty of any kind, whether express or implied, including, but not limited to, the suitability of IDT's products for any particular purpose, an implied warranty of merchantability, or non-infringement of the intellectual property rights of others. This document is presented only as a guide and does not convey any license under intellectual property rights of IDT or any third parties.

IDT's products are not intended for use in life support systems or similar devices where the failure or malfunction of an IDT product can be reasonably expected to significantly affect the health or safety of users. Anyone using an IDT product in such a manner does so at their own risk, absent an express, written agreement by IDT.

Integrated Device Technology, IDT and the IDT logo are registered trademarks of IDT. Other trademarks and service marks used herein, including protected names, logos and designs, are the property of IDT or their respective third party owners.

Copyright 2012. All rights reserved.

## Looking for pricing, stock, or lifecycle information?

Click below to explore more details on WIN SOURCE:

- ⊖ [View MPC9817SD on WIN SOURCE](#)
- ⊖ [IDT, Integrated Device Technology Inc Information](#)

## Optimize Your Supply Chain with WIN SOURCE Solutions

- ✓ Global Sourcing Solution
- ✓ Obsolete Management
- ✓ Cost Control Management
- ✓ Shortage Management
- ✓ Alternative Solution
- ✓ Excess Inventory Management