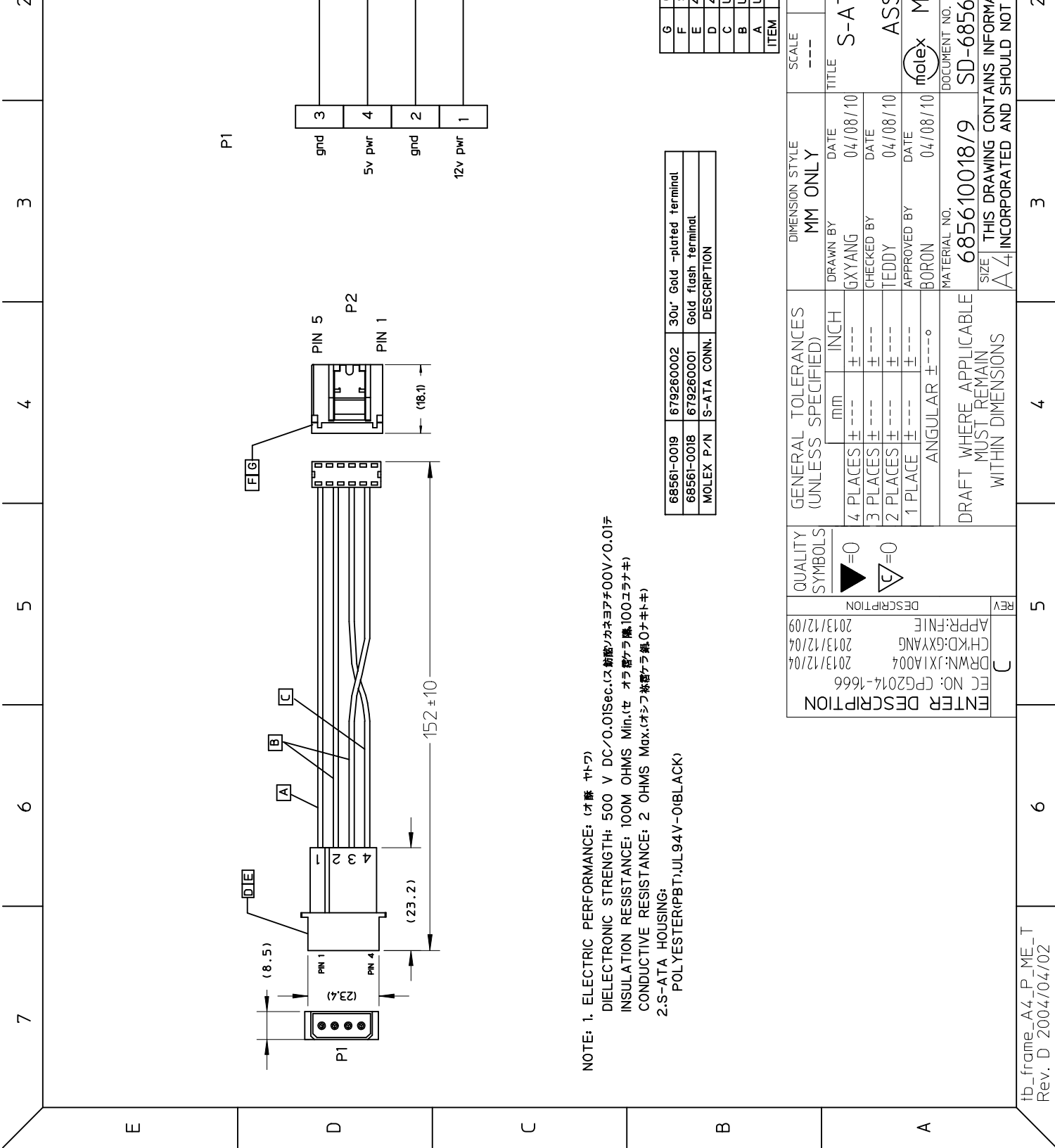




**THE DATASHEET OF**  
**685610019**





NOTE: 1. ELECTRIC PERFORMANCE: (オ断 ヤトフ)  
 DIELECTRIC STRENGTH: 500 V DC/0.01Sec.(ス絶縁/カネヨアチ00V/0.01フ  
 INSULATION RESISTANCE: 100M OHMS Min.(セ オラ断テラ 隔100メガナキ)  
 CONDUCTIVE RESISTANCE: 2 OHMS Max.(オシラ断テラ 断0ナキトキ)  
 2.S-ATA HOUSING:  
 POLYESTER(PBT),UL94V-0(BLACK)

68561-0019	679260002	30u' Gold -plated terminal
68561-0018	679260001	Gold flash terminal
MOLEX P/N	S-ATA CONN.	DESCRIPTION

G
F
E
D
C
B
A
ITEM

ENTER DESCRIPTION	EC NO: CG2014-1666	DRWN: JX1A004	2013/12/04
		CHKD: GXYANG	2013/12/04
		APP: FNI E	2013/12/09
DESCRIPTION	QUALITY SYMBOLS		
	▷=0		
	◻=0		

GENERAL TOLERANCES (UNLESS SPECIFIED)	MM	INCH
4 PLACES	± ---	± ---
3 PLACES	± ---	± ---
2 PLACES	± ---	± ---
1 PLACE	± ---	± ---
ANGULAR ± ---°		
DRAFT WHERE APPLICABLE MUST REMAIN WITHIN DIMENSIONS		

DIMENSION STYLE	MM ONLY
DRAWN BY	GXYANG
CHECKED BY	TEDDY
APPROVED BY	BORON
DATE	04/08/10
MATERIAL NO.	685610018/9
SCALE	----
TITLE	S-A
DOCUMENT NO.	SD-68561
SIZE	A4
THIS DRAWING CONTAINS INFORMATION INCORPORATED AND SHOULD NOT	

## Looking for pricing, stock, or lifecycle information?

Click below to explore more details on WIN SOURCE:

 [View 685610019 on WIN SOURCE](#)

 [Molex, LLC Information](#)

## Optimize Your Supply Chain with WIN SOURCE Solutions

-  Global Sourcing Solution
-  Obsolete Management
-  Cost Control Management
-  Shortage Management
-  Alternative Solution
-  Excess Inventory Management