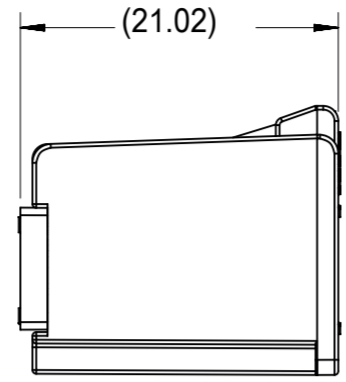
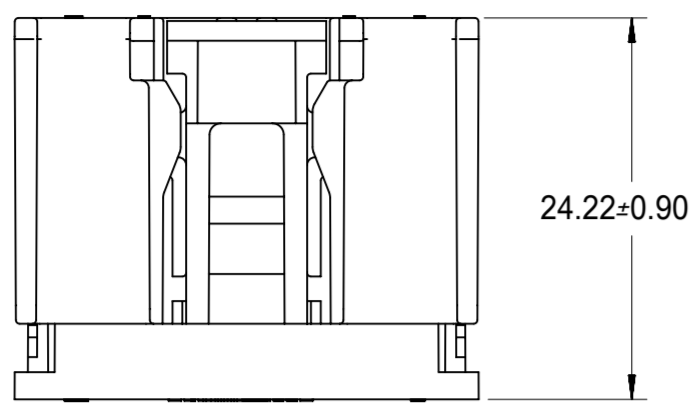


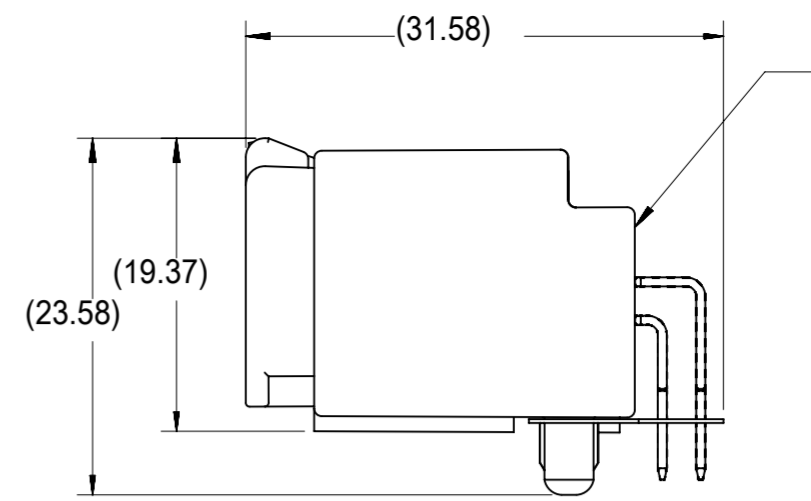


THE DATASHEET OF
307001147





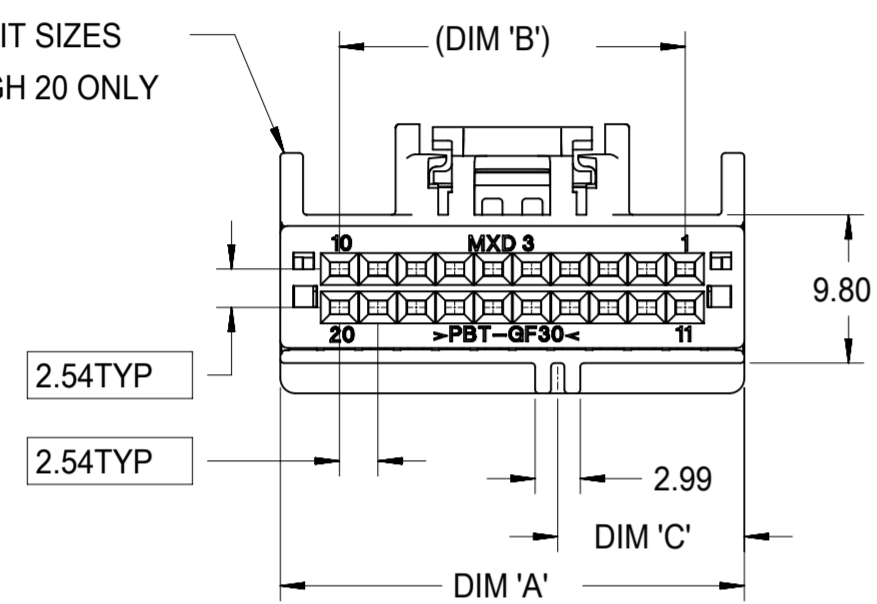
TPA SHOWN IN FULLY SEATED POSITION



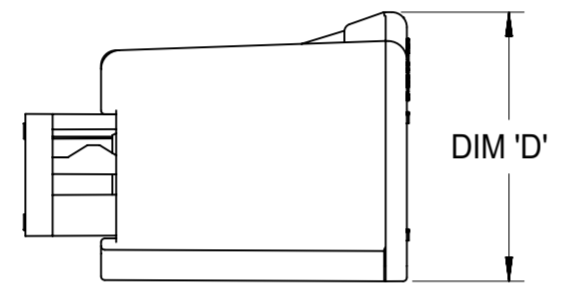
RIGHT ANGLE HEADER ASSEMBLY. SEE SALES DRAWING SD-30700-520.

MATED VIEW

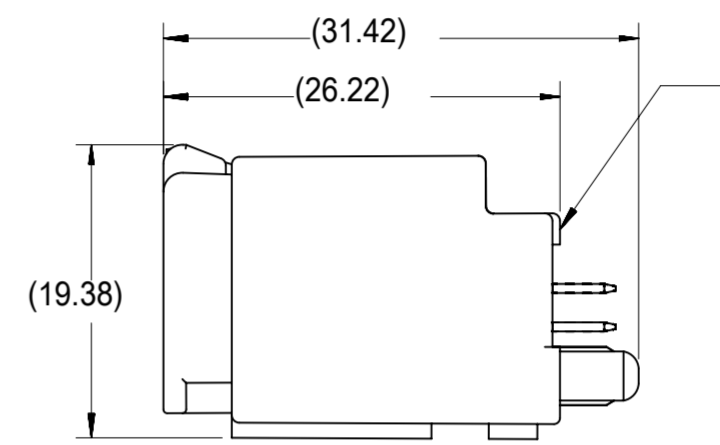
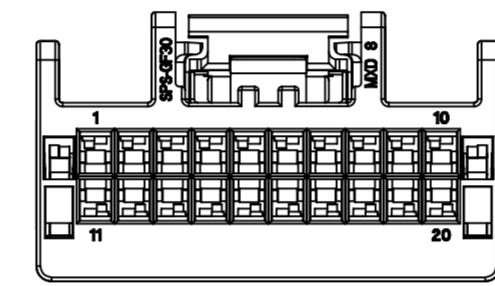
SCOOP PROOF RIBS FOR CIRCUIT SIZES 14 THROUGH 20 ONLY



20 CIRCUIT HARNESS ASSEMBLY SHOWN

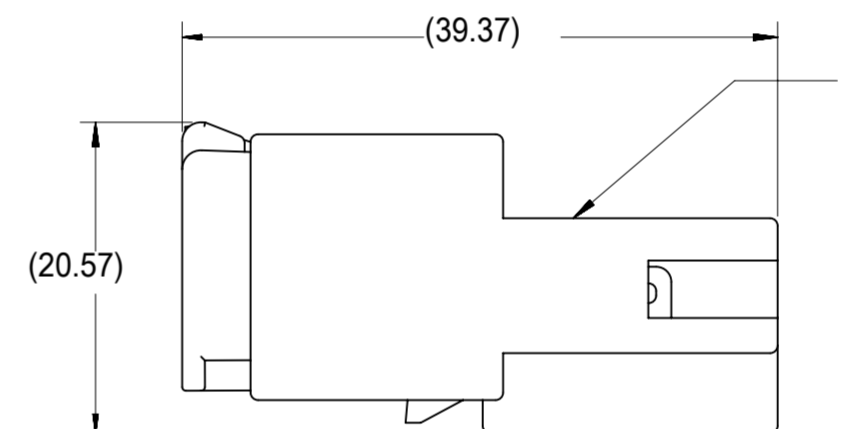


WITH TPA IN PRE-LOAD (AS SHIPPED)



VERTICAL HEADER ASSEMBLY. SEE SALES DRAWING SD-30700-420.

MATED VIEW








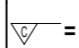

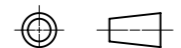


MALE INLINE HARNESS ASSEMBLY. SEE SALES DRAWING SD-30968-120.

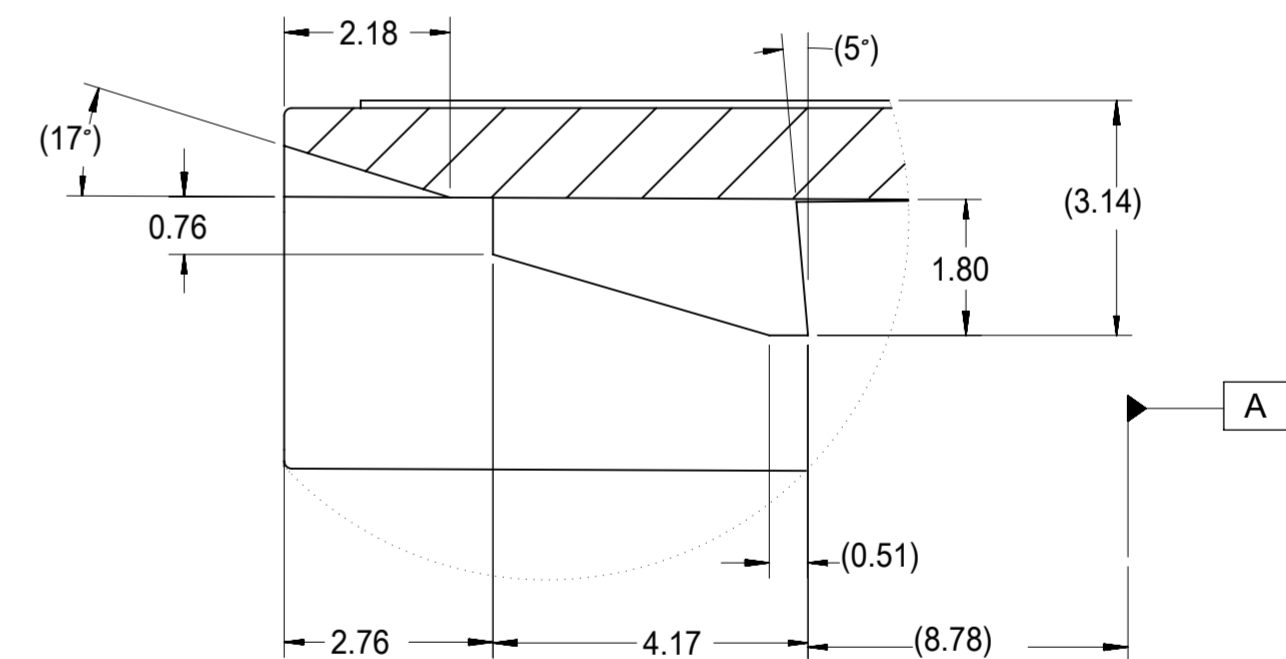
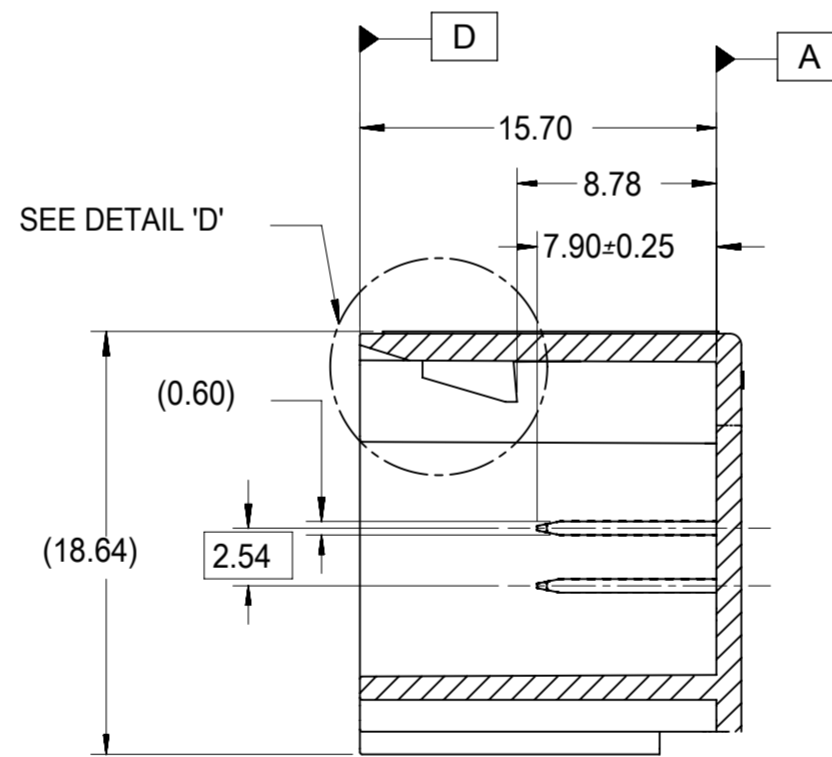
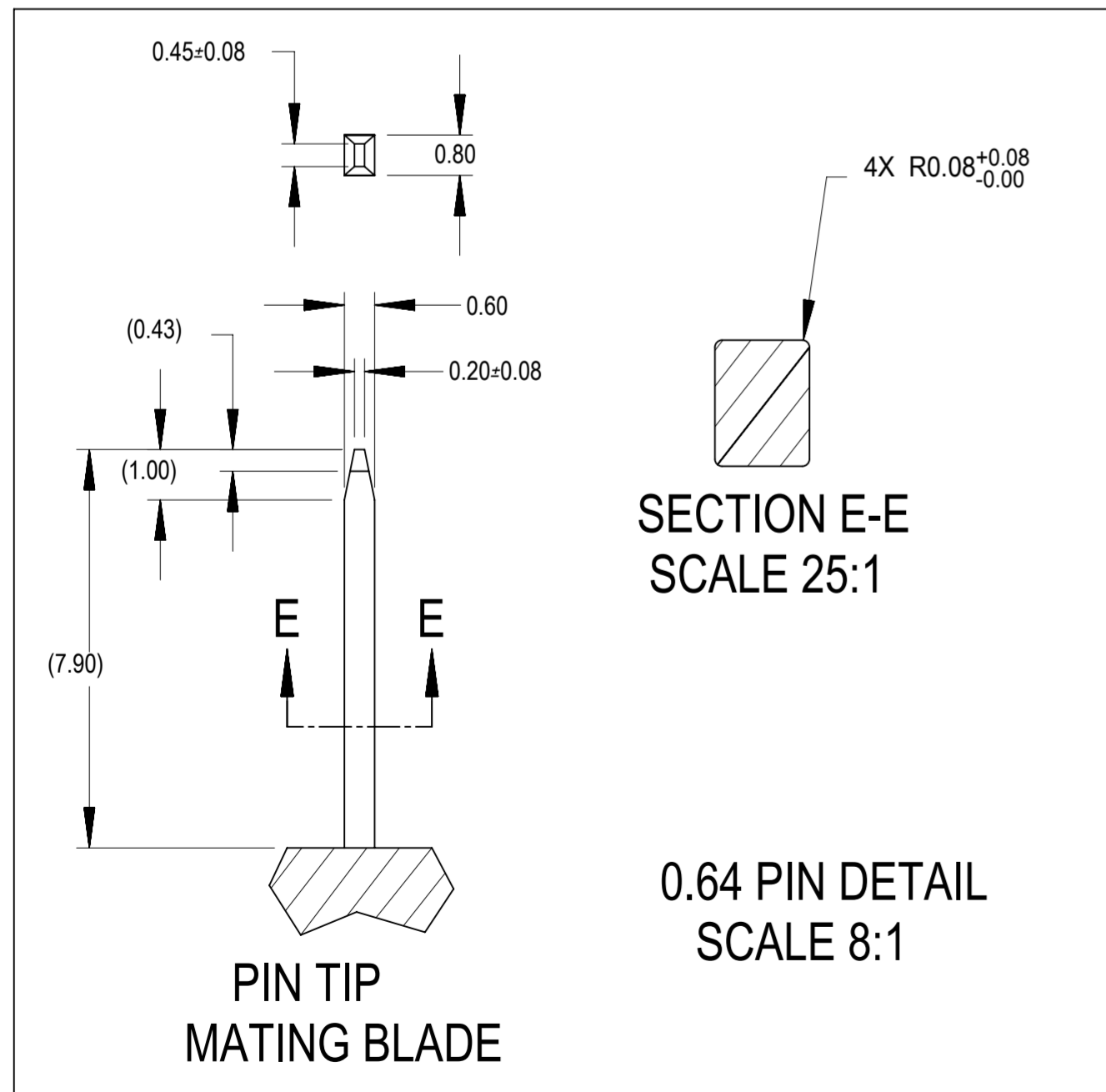
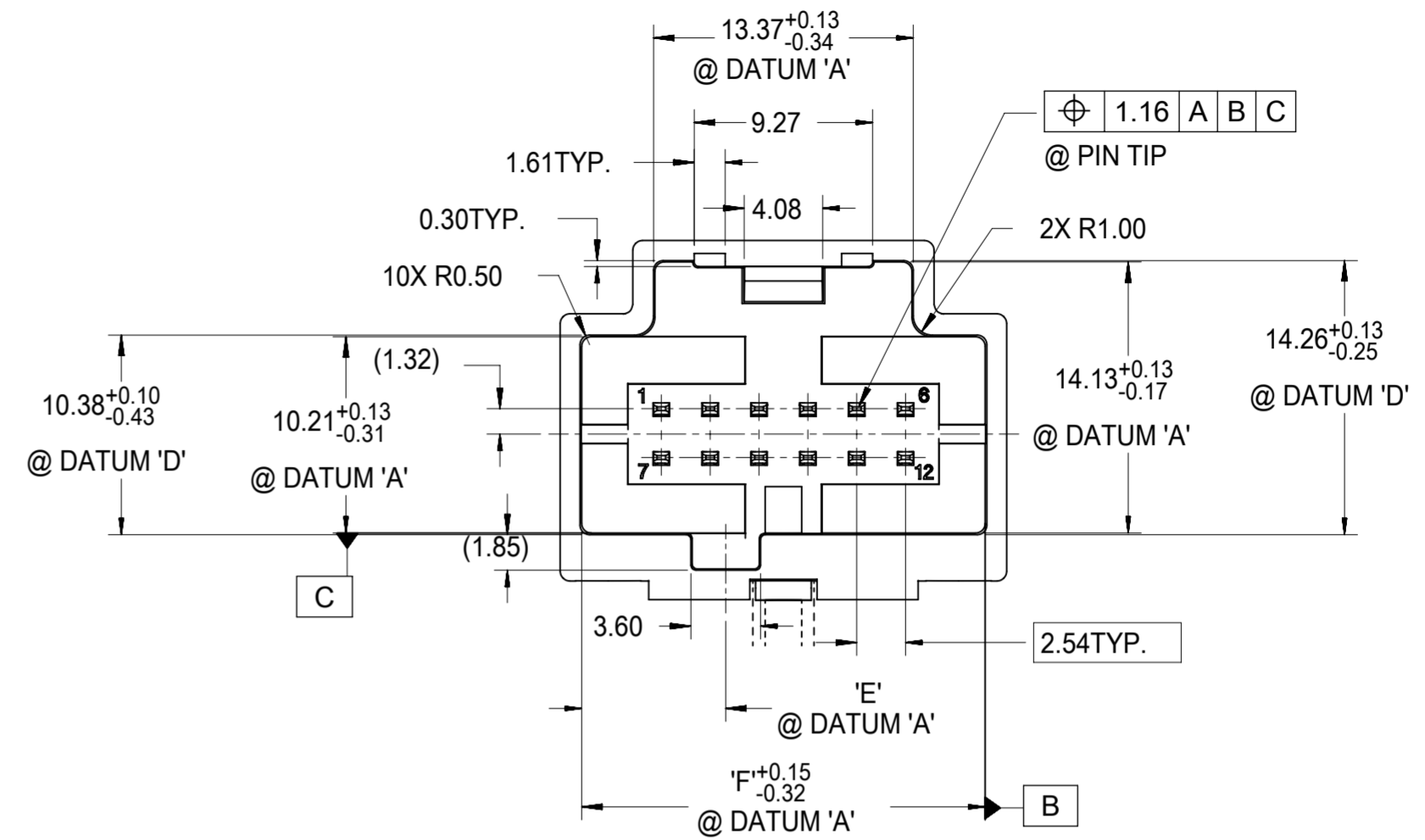
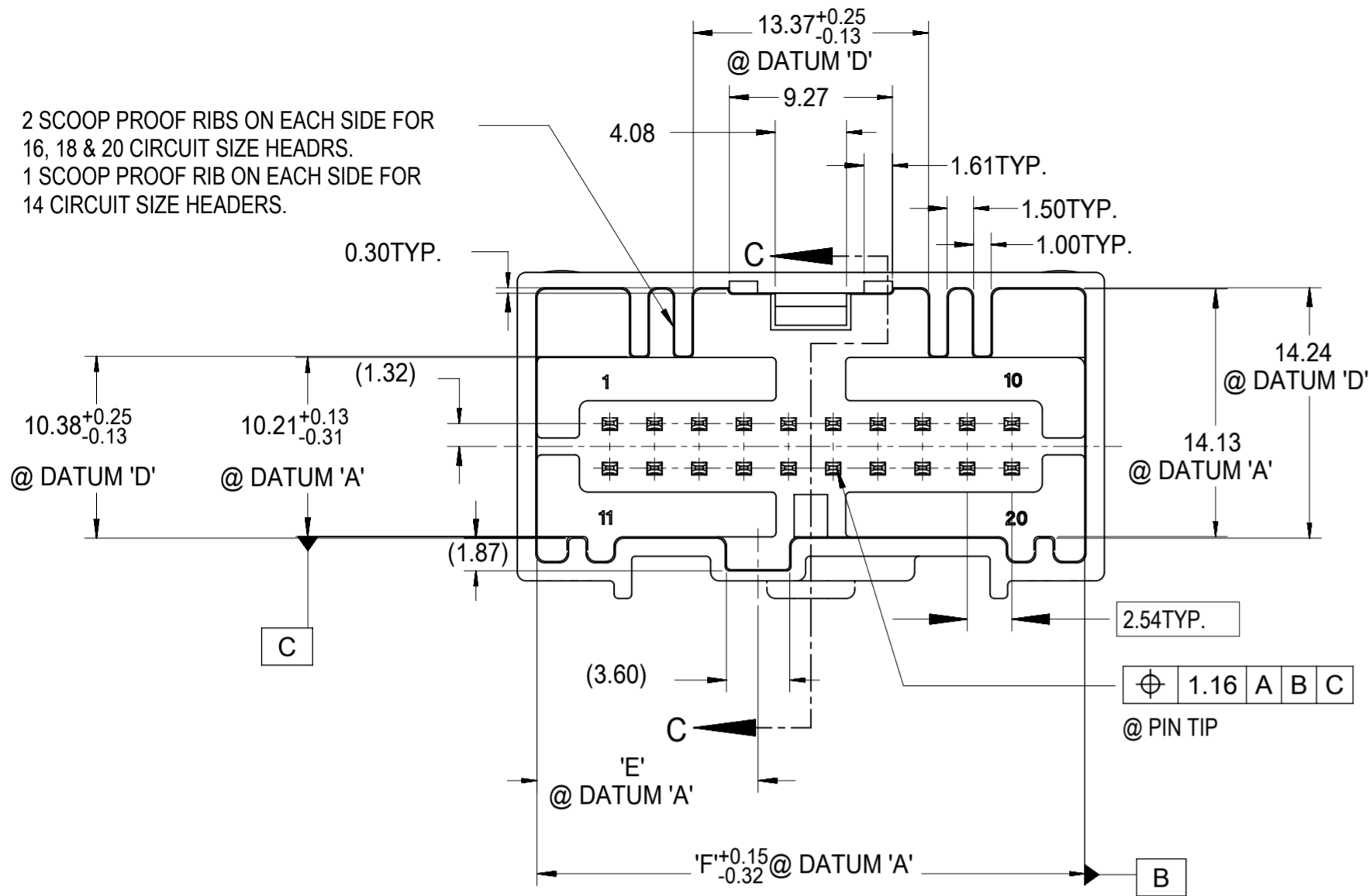
MATED VIEW

NOTES:

1. MATERIAL: HOUSING: SPS, GLASS FILLED, COLOR: SEE CHART. TPA: PBT, GLASS FILLED, COLOR: RED.
2. PRODUCT SPECIFICATION: PS-30700-0001
3. PACKAGING SPECIFICATION: PK-30907-417
4. MATES WITH: SERIES 30700 & 30968, SEE SALES DRAWINGS SD-30700-520, SD-30700-420 & SD-30968-120.

SYMBOLS  = 0  = 0  = 0  = 0  = 0  = 0  = 0  = 0	THIS DRAWING CONTAINS INFORMATION THAT IS PROPRIETARY TO MOLEX ELECTRONIC TECHNOLOGIES, LLC AND SHOULD NOT BE USED WITHOUT WRITTEN PERMISSION		 6-20 CIRCUIT HARNESS ASSEMBLY PRODUCT CUSTOMER DRAWING						
	DIMENSION UNITS	SCALE					CURRENT REV DESC:		
	mm	2:1	EC NO: 601850	DRWN: SHANDITHAVAL	2018/07/23	DOCUMENT NUMBER	DOC TYPE	DOC PART	REVISION
	GENERAL TOLERANCES (UNLESS SPECIFIED)		DRWN: RBAUMAN	2018/07/24	APP: RBAUMAN	2018/07/24	SD-30700-120	PSD	001
ANGULAR TOL ± 0.5°		INITIAL REVISION:	DRWN: RBAUMAN	2018/07/24	APP: RBAUMAN	2018/07/24	MATERIAL NUMBER		
4 PLACES ±		DRWN: RCARLSON	2001/03/23	APP: LGEIB	2001/04/04	CUSTOMER			
3 PLACES ±		DRWN: RCARLSON	2001/03/23	APP: LGEIB	2001/04/04	GENERAL MARKET			
2 PLACES ± 0.13		DRWN: RCARLSON	2001/03/23	APP: LGEIB	2001/04/04	SHEET NUMBER			
1 PLACE ± 0.25		DRWN: RCARLSON	2001/03/23	APP: LGEIB	2001/04/04	1 OF 3			
0 PLACES ±		DRWN: RCARLSON	2001/03/23	APP: LGEIB	2001/04/04				
DRAFT WHERE APPLICABLE MUST REMAIN WITHIN DIMENSIONS		THIRD ANGLE PROJECTION	DRAWING	SERIES					
			A2-SIZE	30700					

MATING INTERFACE DIMENSIONS (REFERENCE ONLY)



SYMBOLS		THIS DRAWING CONTAINS INFORMATION THAT IS PROPRIETARY TO MOLEX ELECTRONIC TECHNOLOGIES, LLC AND SHOULD NOT BE USED WITHOUT WRITTEN PERMISSION	
DIMENSION UNITS	SCALE	CURRENT REV DESC:	
∅ = 0	mm	2:1	
∇ = 0	GENERAL TOLERANCES (UNLESS SPECIFIED)		
∇ = 0	ANGULAR TOL ± 0.5°		
∇ = 0	4 PLACES ±		
∇ = 0	3 PLACES ±		
∇ = 0	2 PLACES ± 0.13		
∇ = 0	1 PLACE ± 0.25		
∇ = 0	0 PLACES ±		
∇ = 0	DRAFT WHERE APPLICABLE MUST REMAIN WITHIN DIMENSIONS		
		THIRD ANGLE PROJECTION	DRAWING
		SERIES	
		A2-SIZE	30700
		MATERIAL NUMBER	
		CUSTOMER	
		SHEET NUMBER	

<p>EC NO: 601850 DRWN: SHANDITHAVAL 2018/07/23 CHK'D: RBAUMAN 2018/07/24 APPR: RBAUMAN 2018/07/24</p>			
<p>INITIAL REVISION: DRWN: RCARLSON 2001/03/23 APPR: LGEIB 2001/04/04</p>			
DOCUMENT NUMBER		DOC TYPE	DOC PART
SD-30700-120		PSD	001
MATERIAL NUMBER		CUSTOMER	SHEET NUMBER
		GENERAL MARKET	3 OF 3

DOCUMENT STATUS	P1	RELEASE DATE	2018/07/24	20:32:40
-----------------	----	--------------	------------	----------

molex

6-20 CIRCUIT
HARNES ASSEMBLY

PRODUCT CUSTOMER DRAWING

SD-30700-120

PSD 001 J

GENERAL MARKET

3 OF 3

Looking for pricing, stock, or lifecycle information?

Click below to explore more details on WIN SOURCE:

 [View 307001147 on WIN SOURCE](#)

 [Molex, LLC Information](#)

Optimize Your Supply Chain with WIN SOURCE Solutions

-  Global Sourcing Solution
-  Obsolete Management
-  Cost Control Management
-  Shortage Management
-  Alternative Solution
-  Excess Inventory Management