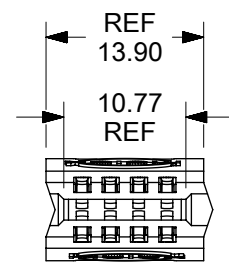
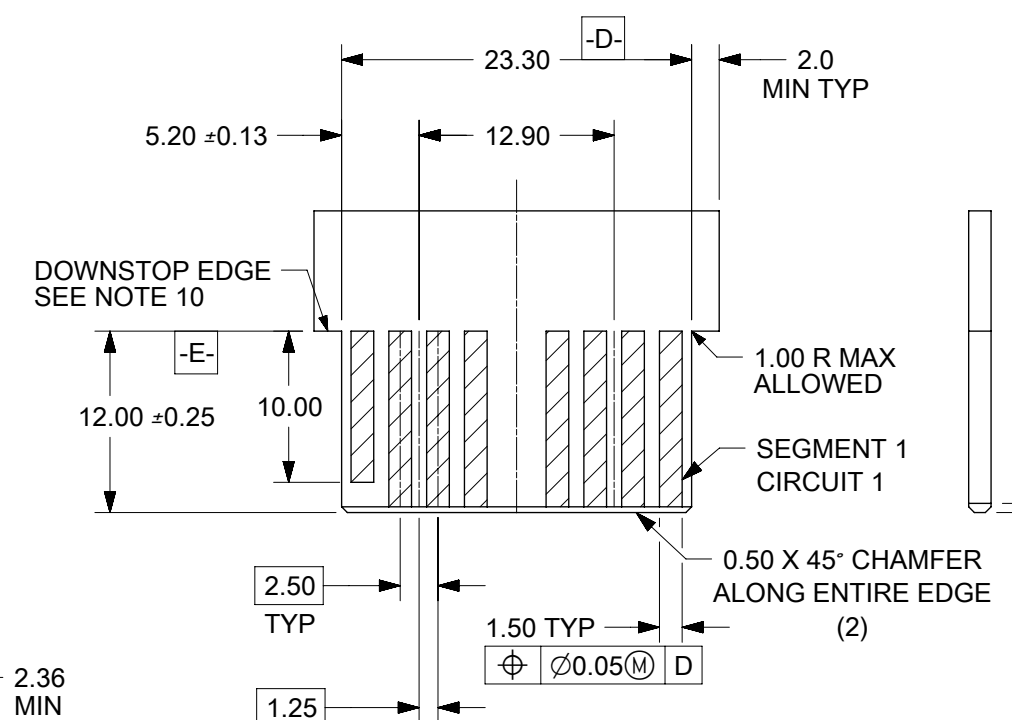
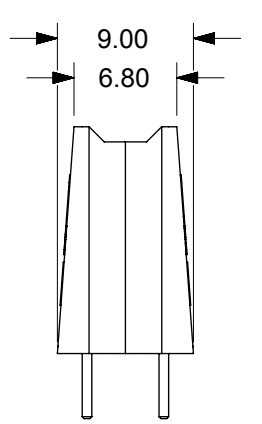
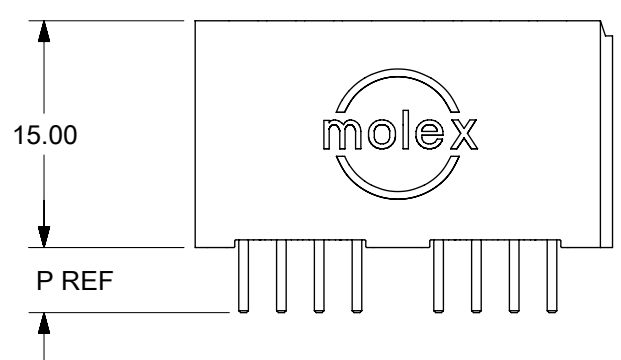
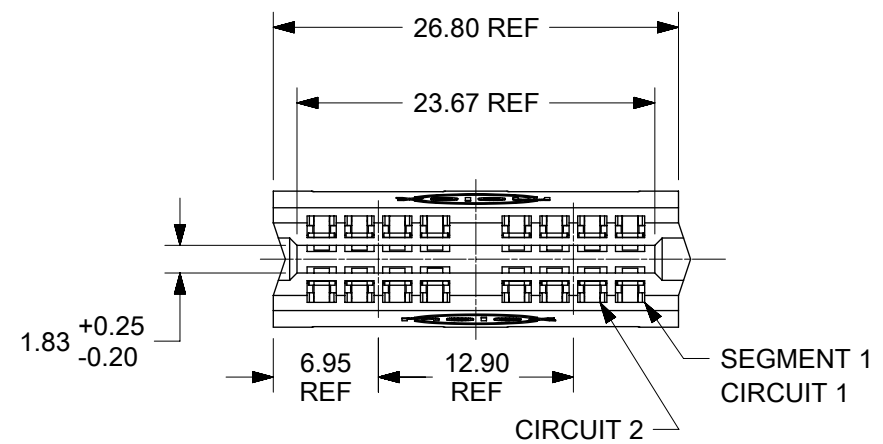


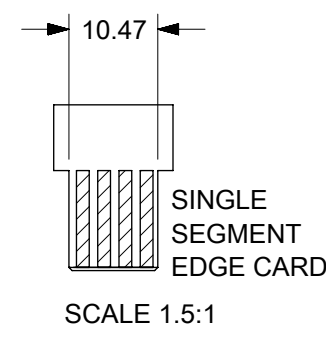


THE DATASHEET OF
458440004

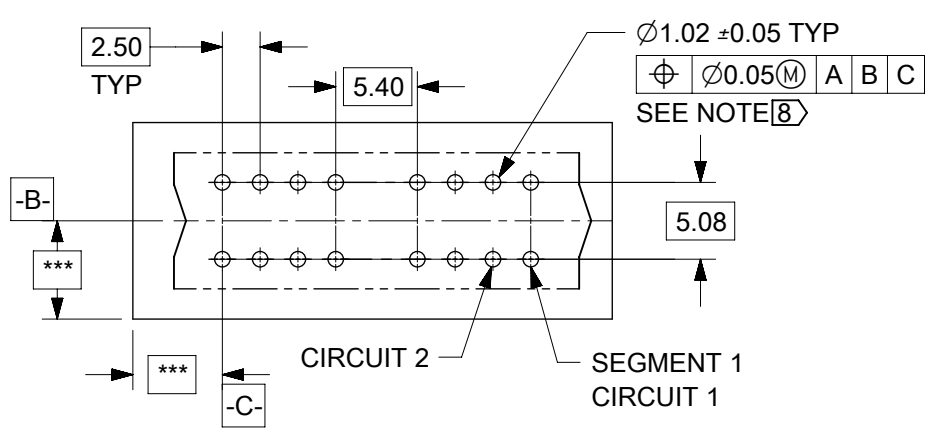




SINGLE SEGMENT MODULE 45844-1000 SCALE 1.5:1



SINGLE SEGMENT EDGE CARD SCALE 1.5:1



PCB LAYOUT: COMPONENT SIDE
*** = TO BE DETERMINED BY CUSTOMER

RECOMMENDED EDGE CARD LAYOUT
EDGE CARD THICKNESS: 1.57 / .062
PLATING: GOLD 30 uINCHES MIN
OVER 150 uINCHES NICKEL

- NOTES:
- HOUSING MATL: LCP. UL94V-0, BLACK
TERMINAL MATL: COPPER ALLOY
 - FINISH: SELECT GOLD: 30 M.I. MIN IN CONTACT AREA
SELECT TIN: 150 M.I. MIN IN SOLDER AREA
BOTH OVER NICKEL: 50 M.I. MIN
 - PRODUCT SPECIFICATION: PS-45719-001.
 - PACKAGING SPECIFICATION: ES-45714-001.
 - PCB THICKNESS: SEE CHART
 - EDGE CARD THICKNESS: 1.57±0.08
 - DIMENSIONS GIVEN ACROSS CENTERLINES ARE SYMMETRICAL ABOUT THOSE CENTERLINES WITHIN HALF THE TOTAL TOLERANCE
 - PCB HOLE SPECIFICATION: SEE PS-45719-001.
 - THIS EDGE WILL TOUCH HOUSING WHEN EDGE CARD IS FULLY SEATED

	MATERIAL NUMBER	SEG'S	DIM P	PCB THK
	45844-1000	1	4.33	3.18/2.36
	45844-1001	1	3.19	1.57
	45844-0001	2	4.33	3.18/2.36
	45844-0004	2	3.19	1.57

THIS DRAWING CONTAINS INFORMATION THAT IS PROPRIETARY TO MOLEX ELECTRONIC TECHNOLOGIES, LLC AND SHOULD NOT BE USED WITHOUT WRITTEN PERMISSION

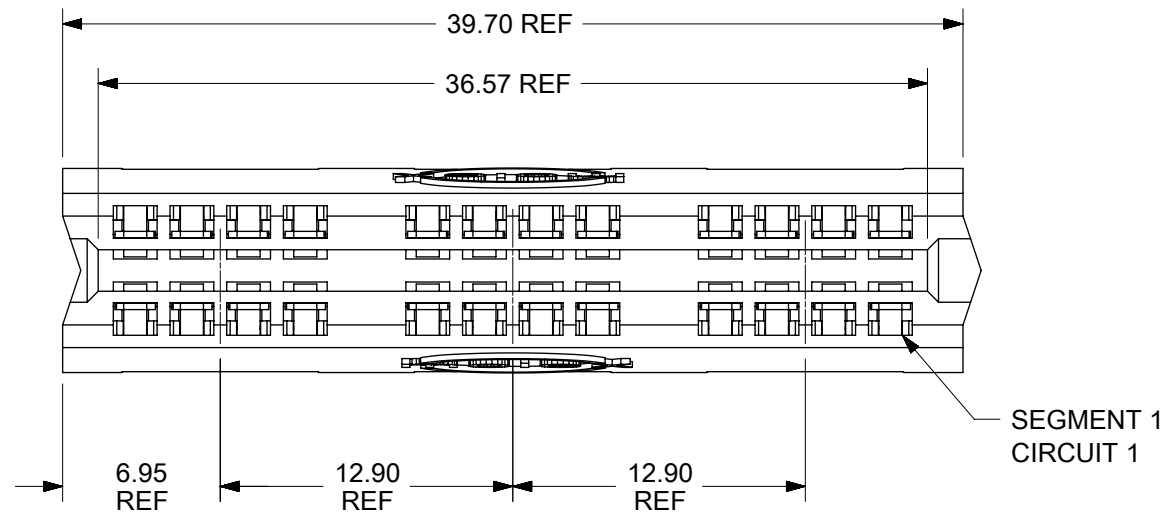
DIMENSION UNITS MM	SCALE 2:1	CURRENT REV DESC: SLOT TOLE. UPDATE	
GENERAL TOLERANCES (UNLESS SPECIFIED)		EC NO: 611749	
ANGULAR TOL	± 0.5°	DRWN: HK02	2019/02/27
4 PLACES	±	CHK'D: MBELLE	2019/06/04
3 PLACES	±	APPR: HTHYAGARAJ	2019/06/14
2 PLACES	± 0.25	INITIAL REVISION:	
1 PLACE	±	DRWN: MARGULIS	2004/07/29
0 PLACES	±	APPR: MARGULIS	2004/07/29
DRAFT WHERE APPLICABLE MUST REMAIN WITHIN DIMENSIONS	THIRD ANGLE PROJECTION	DRAWING	SERIES
		B-SIZE	45844

POWER EDGE ASSEMBLY
SIGNAL VERTICAL SOLDER TAIL

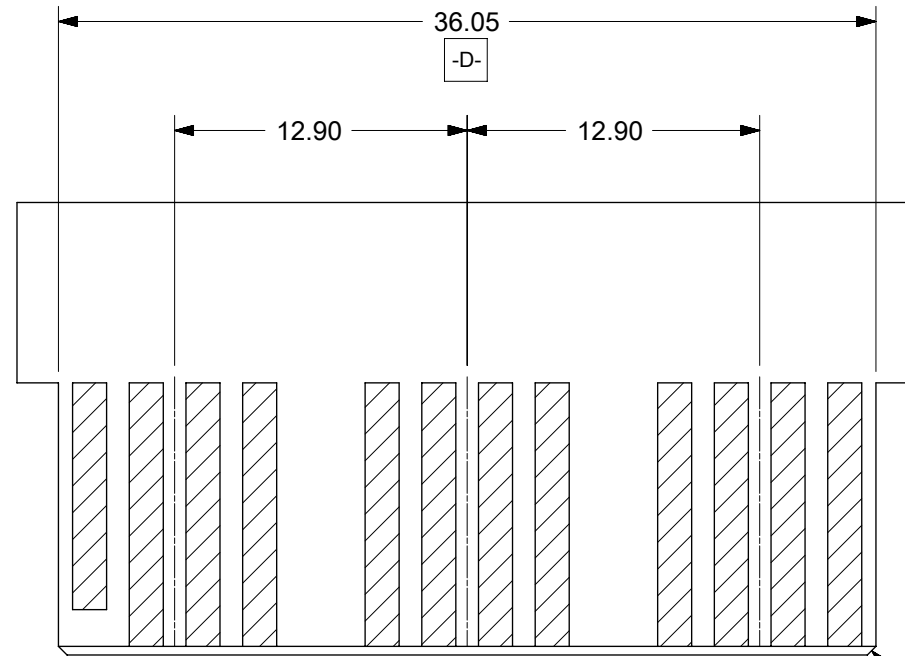
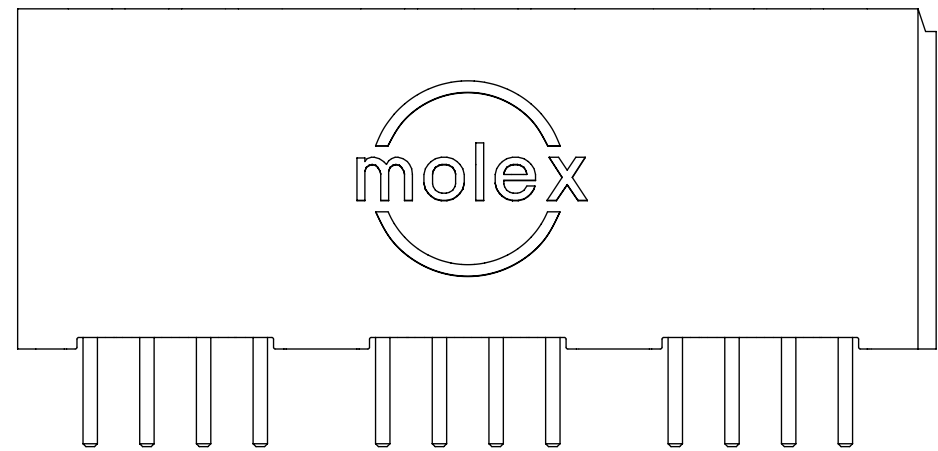
PRODUCT CUSTOMER DRAWING

DOCUMENT NUMBER	DOC TYPE	DOC PART	REVISION
SD-45844-001	PSD	001	F5
MATERIAL NUMBER	CUSTOMER	SHEET NUMBER	
SEE CHART	GENERAL MARKET	1 OF 3	

DOCUMENT STATUS	RELEASE DATE
-----------------	--------------



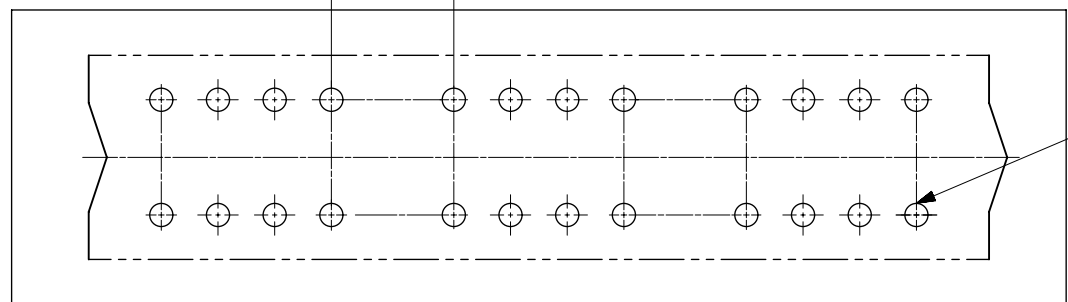
SEE SHEET ONE FOR NOTES AND DIMENSIONS NOT SHOWN



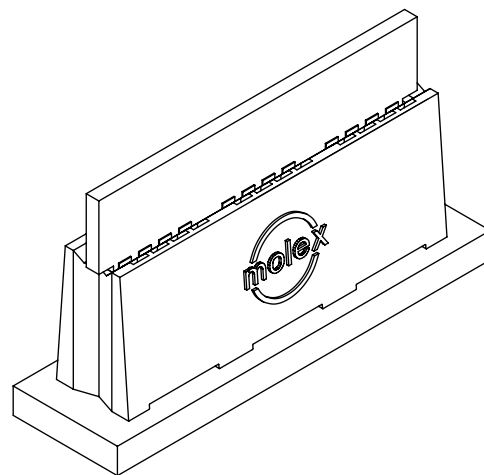
RECOMMENDED EDGE CARD LAYOUT:
TOLERANCE: ±0.05

SEGMENT 1
CIRCUIT 1

5.40
TYP 2



SEGMENT 1
CIRCUIT 1



PCB LAYOUT: COMPONENT SIDE

TOOLING STATUS	MATERIAL NUMBER	SEG'S	DIM P	PCB THICK
TOOLED	45844-0002	3	4.33	3.18/2.36
TOOLED	45844-0005	3	3.19	1.57

THIS DRAWING CONTAINS INFORMATION THAT IS PROPRIETARY TO MOLEX ELECTRONIC TECHNOLOGIES, LLC AND SHOULD NOT BE USED WITHOUT WRITTEN PERMISSION

DIMENSION UNITS	SCALE	CURRENT REV DESC: SLOT TOLE. UPDATE		
MM	2:1			
GENERAL TOLERANCES (UNLESS SPECIFIED)				
ANGULAR TOL	± 0.5°			
4 PLACES	±			
3 PLACES	±			
2 PLACES	± 0.25			
1 PLACE	±			
0 PLACES	±			
DRAFT WHERE APPLICABLE MUST REMAIN WITHIN DIMENSIONS		THIRD ANGLE PROJECTION	DRAWING	SERIES
			B-SIZE	45844
		MATERIAL NUMBER		
		CUSTOMER		
		SHEET NUMBER		
		SEE CHART	GENERAL MARKET	2 OF 3

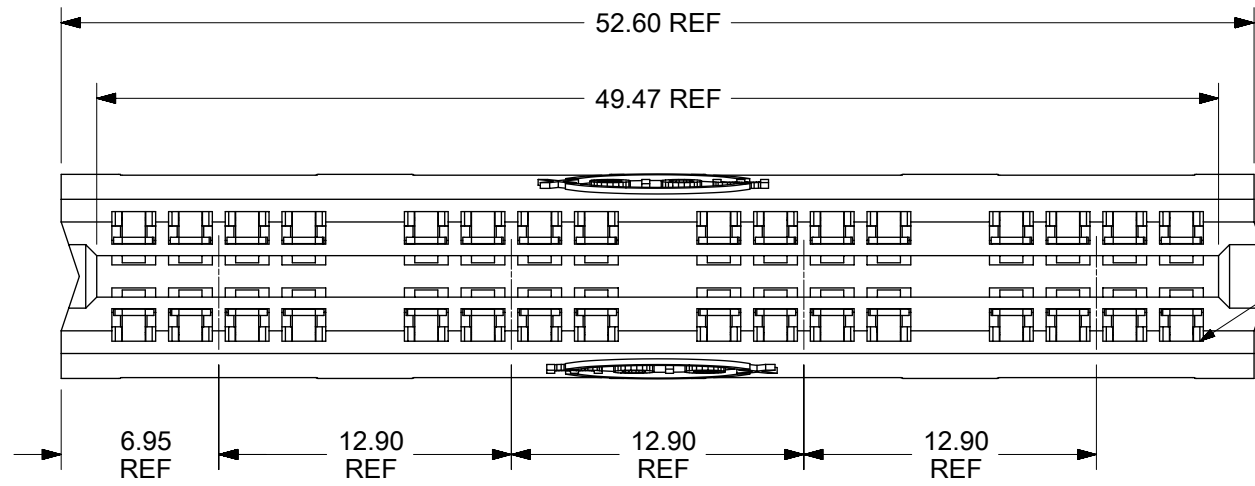
molex

POWER EDGE ASSEMBLY
SIGNAL VERTICAL SOLDER TAIL

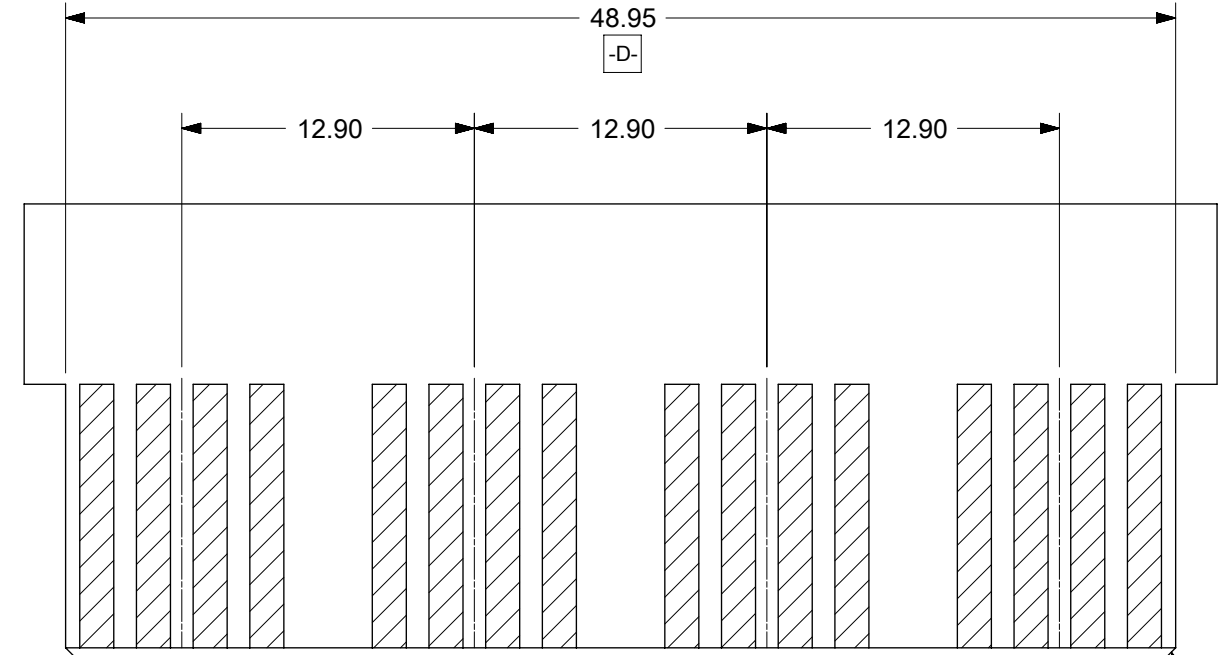
PRODUCT CUSTOMER DRAWING

DOCUMENT NUMBER: SD-45844-001
DOC TYPE: PSD
DOC PART: 001
REVISION: F5

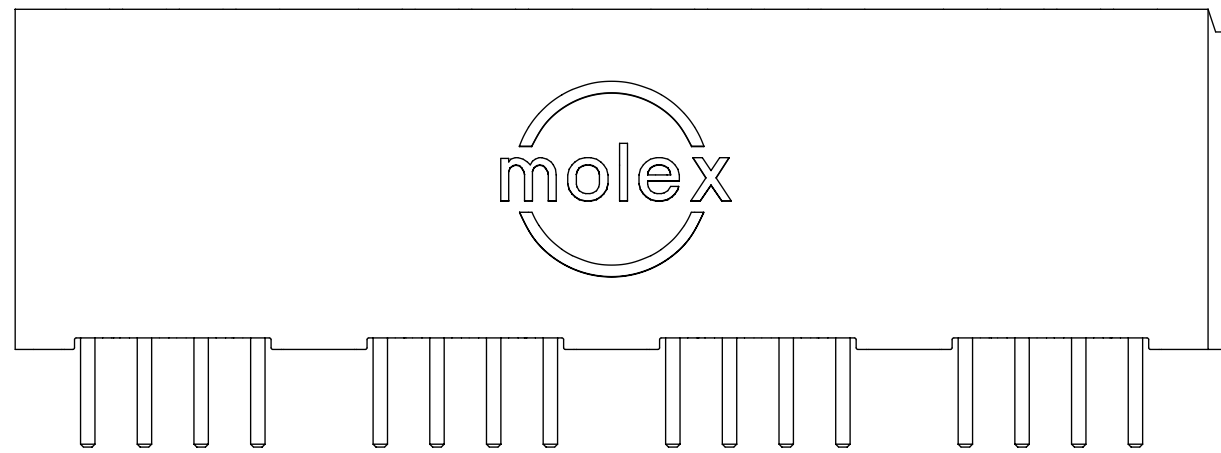
SEE SHEET ONE FOR NOTES AND DIMENSIONS NOT SHOWN



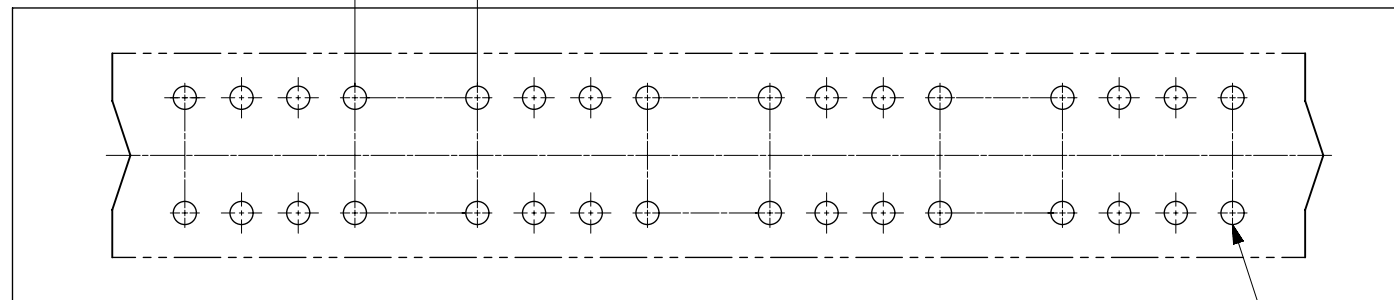
SEGMENT 1
CIRCUIT 1



SEGMENT 1
CIRCUIT 1



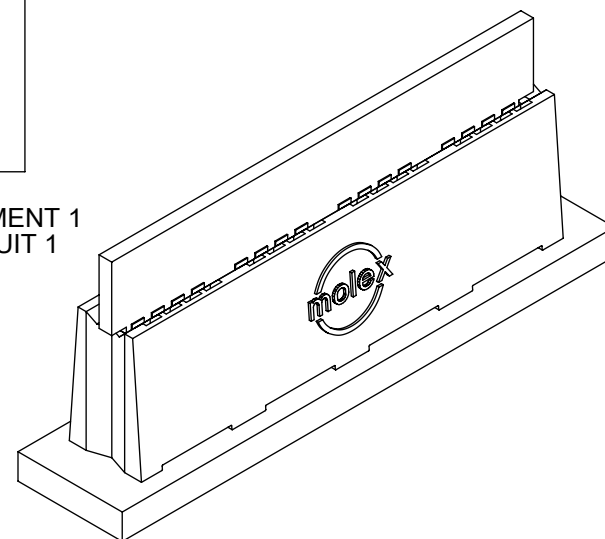
5.40
TYP 3



PCB LAYOUT: COMPONENT SIDE

SEGMENT 1
CIRCUIT 1

RECOMMENDED EDGE CARD LAYOUT
TOLERANCE: ±0.05



TOOLING STATUS	MATERIAL NUMBER	SEG'S	DIM P	PCB THK
TOOLED	45844-0003	4	4.33	3.18/2.36
TOOLED	45844-0006	4	3.19	1.57

THIS DRAWING CONTAINS INFORMATION THAT IS PROPRIETARY TO MOLEX ELECTRONIC TECHNOLOGIES, LLC AND SHOULD NOT BE USED WITHOUT WRITTEN PERMISSION									
DIMENSION UNITS MM	SCALE 2:1	CURRENT REV DESC: SLOT TOLE. UPDATE							
GENERAL TOLERANCES (UNLESS SPECIFIED)		EC NO: 611749		<p>POWER EDGE ASSEMBLY SIGNAL VERTICAL SOLDER TAIL</p> <p>PRODUCT CUSTOMER DRAWING</p>					
ANGULAR TOL	± 0.5°	DRWN: HK02							
4 PLACES	±	2019/02/27							
3 PLACES	±	CHK'D: MBELLE							
2 PLACES	± 0.25	APPR: HTHYAGARAJ		2019/06/04		2019/06/14		DOCUMENT NUMBER	
1 PLACE	±	INITIAL REVISION:		2004/07/29		SD-45844-001		PSD	001
0 PLACES	±	APPR: MARGULIS		2004/07/29		SEE CHART		GENERAL MARKET	
DRAFT WHERE APPLICABLE MUST REMAIN WITHIN DIMENSIONS		THIRD ANGLE PROJECTION		DRAWING	SERIES	MATERIAL NUMBER	CUSTOMER	SHEET NUMBER	
				B-SIZE	45844	SEE CHART	GENERAL MARKET	3 OF 3	

DOCUMENT STATUS	P1	RELEASE DATE	2019/06/14	00:11:00
-----------------	----	--------------	------------	----------

6

5

4

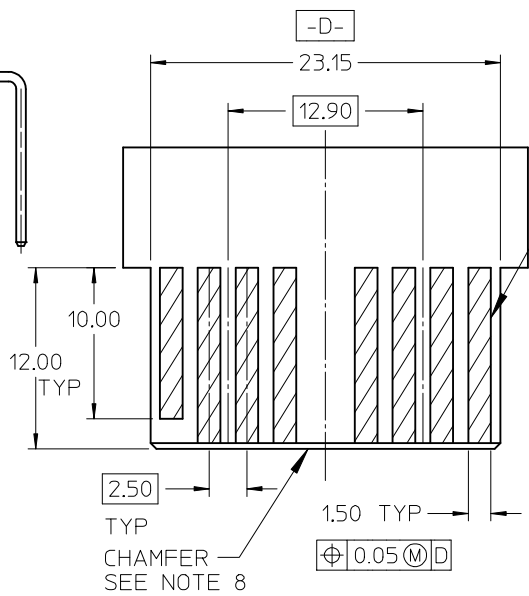
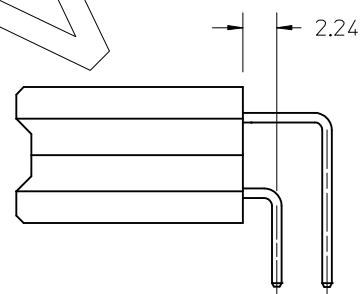
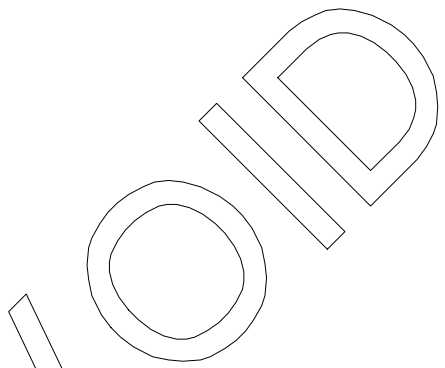
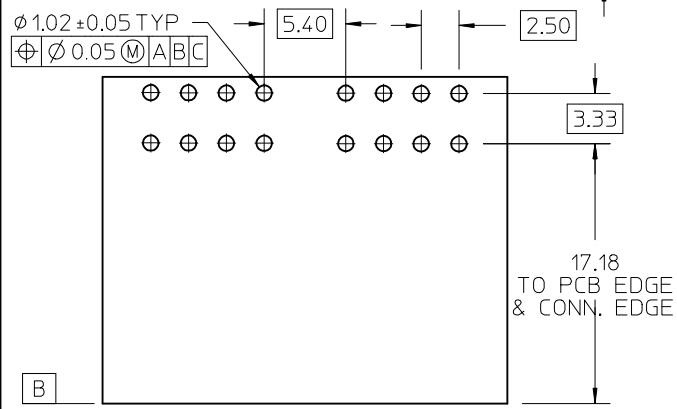
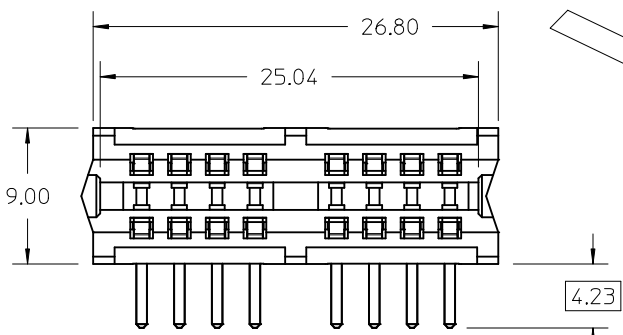
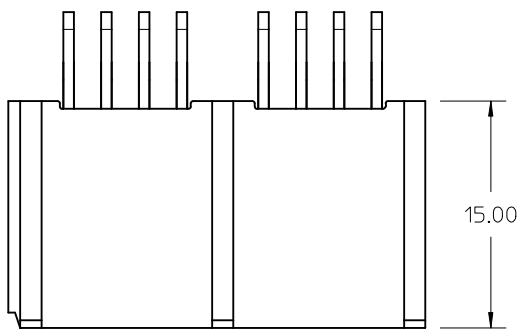
3

2

1

NOTES:

- HOUSING MATL: LCP, UL94V-0, BLACK
TERMINAL MATL: COPPER ALLOY
- FINISH: SELECT GOLD: 30 M.I. MIN IN CONTACT AREA
SELECT TIN: 150 M.I. MIN IN SOLDER AREA
BOTH OVER NICKEL: 50 M.I. MIN
- PRODUCT SPECIFICATION: PS-45719-001.
- PACKAGING SPECIFICATION: PK-45714-001.
- PCB THICKNESS: SEE CHART
- EDGE CARD THICKNESS: 1.57±0.15
- DIMENSIONS GIVEN ACROSS CENTERLINES ARE SYMMETRICAL ABOUT THOSE CENTERLINES WITHIN HALF THE TOTAL TOLERANCE.
- 0.50 X 45° CHAMFER ON LEADING EDGE, TYP 4 SIDES.



SEGMENT 1
CIRCUIT 1

SEG's	MATERIAL NUMBER	DIM P	PCB THK
2	45844-0901	4.23	3.18/2.36
2	45844-0904	3.19	1.57

VOID DRAWING	EC NO: UCP2015-0887	DRWN: JSCHAFAER	2014/11/06
	CHKD: APATEL	APPR: APATEL	2014/11/10
REV	DESCRIPTION		
A			

GENERAL TOLERANCES (UNLESS SPECIFIED)	
	mm INCH
4 PLACES	± --- ± ---
3 PLACES	± --- ± ---
2 PLACES	± 0.25 ± ---
1 PLACE	± --- ± ---
ANGULAR ± 1/2°	
DRAFT WHERE APPLICABLE MUST REMAIN WITHIN DIMENSIONS	

DIMENSION STYLE	
MM ONLY	
DRAWN BY	DATE
JSCHAFAER	2011/11/07
CHECKED BY	DATE
APPROVED BY	DATE
APATEL	2014/08/25
SEE CHART	
SIZE	A

SCALE	2:1
DESIGN UNITS	METRIC
THIRD ANGLE PROJECTION	
TITLE	
POWER EDGE ASSEMBLY SIGNAL RT ANGLE SOLDER TAIL	
MOLEX INCORPORATED	
DOCUMENT NO.	SD-45844-002
SHEET NO.	1 OF 4

5

4

3

2

1

6

5

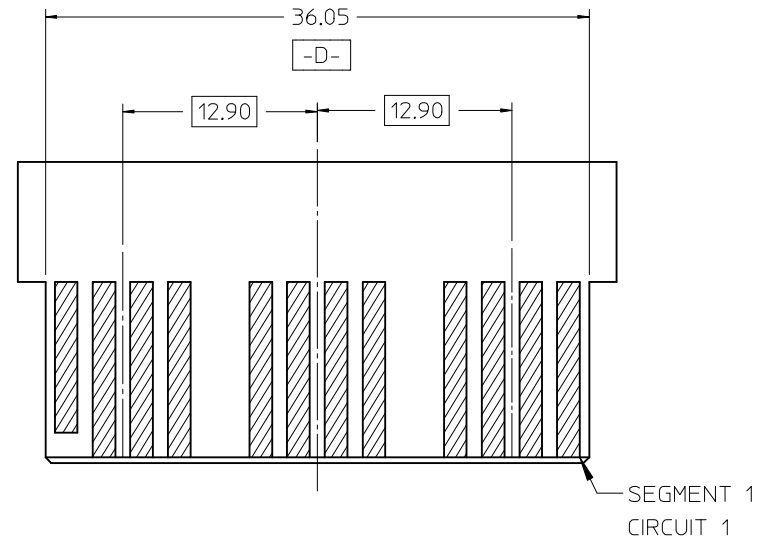
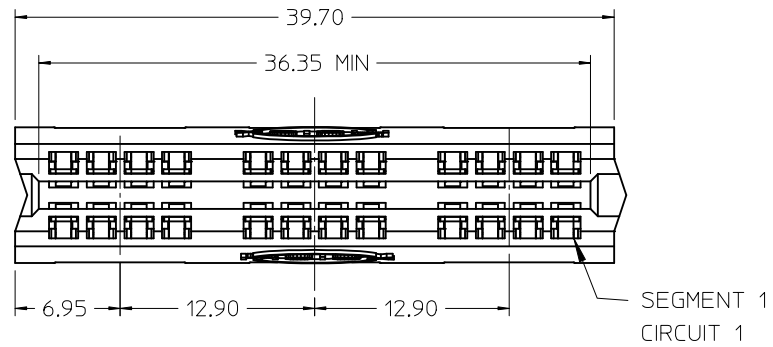
4

3

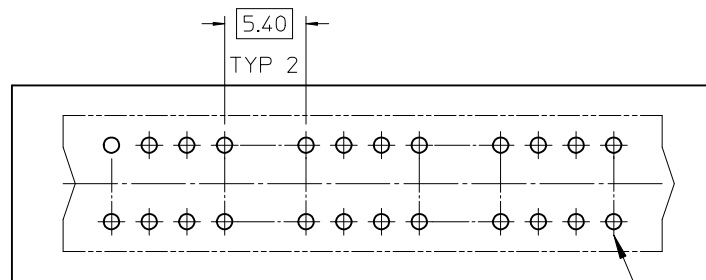
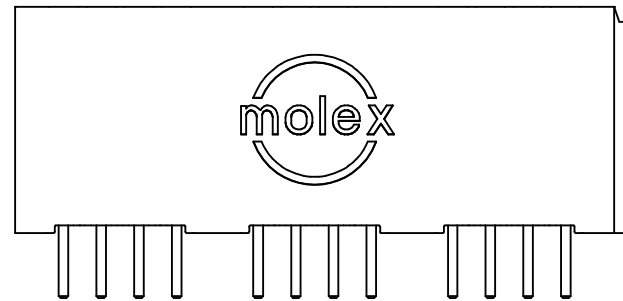
2

1

SEE SHEET ONE FOR NOTES AND DIMENSIONS NOT SHOWN

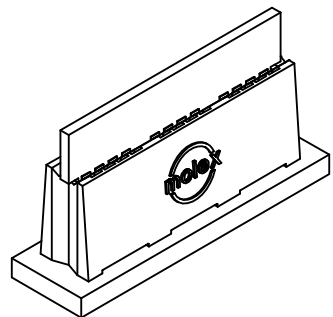


RECOMMENDED EDGE CARD LAYOUT:
TOLERANCE: ± 0.05



SEGMENT 1
CIRCUIT 1

SEG's	MATERIAL NUMBER	DIM P	PCB THK
3	45844-0902	4.23	3.18/2.36
3	45844-0905	3.19	1.57



EC NO: UCP2015-0887	DRWN: JSCHAFFER	2014/11/06	DESCRIPTION
CHKD: APATEL	2014/11/10		
APPR: APATEL			
REV			

GENERAL TOLERANCES
(UNLESS SPECIFIED)

	mm	INCH
4 PLACES	\pm ---	\pm ---
3 PLACES	\pm ---	\pm ---
2 PLACES	± 0.25	\pm ---
1 PLACE	\pm ---	\pm ---

ANGULAR $\pm 1/2^\circ$

DRAFT WHERE APPLICABLE
MUST REMAIN
WITHIN DIMENSIONS

DIMENSION STYLE
MM ONLY

DRAWN BY	DATE
JSCHAFFER	2011/11/07
CHECKED BY	DATE

APPROVED BY	DATE
APATEL	2014/08/25

MATERIAL NUMBER
SEE CHART

SIZE
A

THIS DRAWING CONTAINS INFORMATION THAT IS PROPRIETARY TO MOLEX
INCORPORATED AND SHOULD NOT BE USED WITHOUT WRITTEN PERMISSION

SCALE
2:1

DESIGN UNITS
METRIC

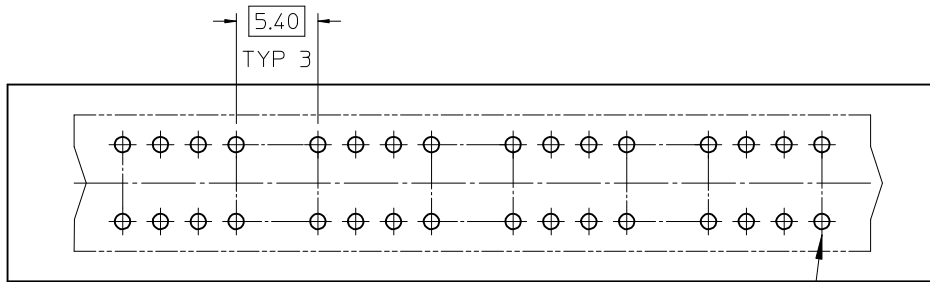
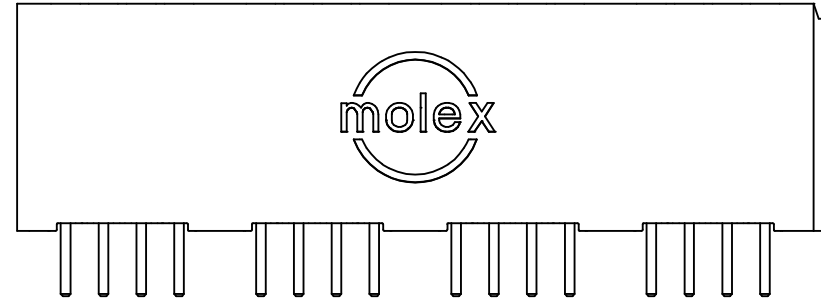
THIRD ANGLE
PROJECTION

TITLE
POWER EDGE ASSEMBLY
SIGNAL RT ANGLE
SOLDER TAIL

MOLEX MOLEX INCORPORATED

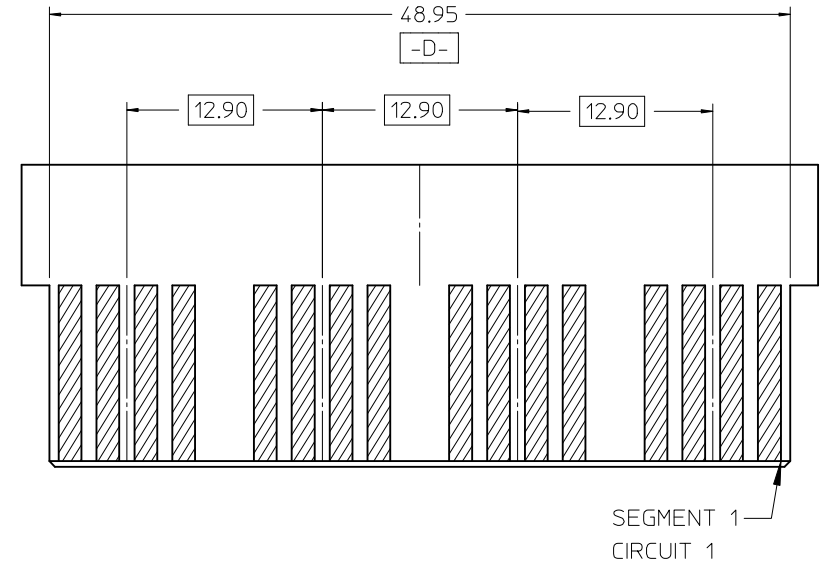
DOCUMENT NO.
SD-45844-002

SHEET NO.
2



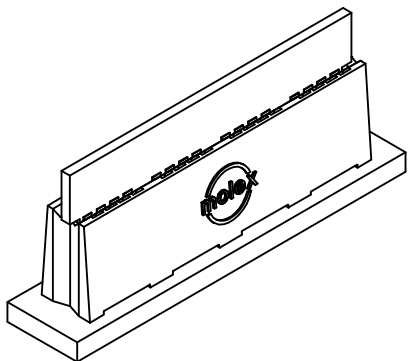
PCB LAYOUT: COMPONENT SIDE

SEE SHEET ONE FOR NOTES AND DIMENSIONS NOT SHOWN



RECOMMENDED EDGE CARD LAYOUT
TOLERANCE: ±0.05

SEG's	MATERIAL NUMBER	DIM P	PCB THK
4	45844-0903	4.23	3.18/2.36
4	45844-0906	3.19	1.57



EC NO: UCP2015-0887	DRWN: JSCHAFAER	2014/11/06
CH'KD:	APPR: APATEL	2014/11/10
A	REV	DESCRIPTION

GENERAL TOLERANCES (UNLESS SPECIFIED)	
	mm INCH
4 PLACES	± --- ± ---
3 PLACES	± --- ± ---
2 PLACES	± 0.25 ± ---
1 PLACE	± --- ± ---
ANGULAR ±1/2°	
DRAFT WHERE APPLICABLE MUST REMAIN WITHIN DIMENSIONS	

DIMENSION STYLE MM ONLY	
DRAWN BY	DATE
JSCHAFAER	2011/11/07
CHECKED BY	DATE
APPROVED BY	DATE
APATEL	2014/08/25
MATERIAL NUMBER	SEE CHART

SCALE 2:1	DESIGN UNITS METRIC	THIRD ANGLE PROJECTION
TITLE POWER EDGE ASSEMBLY SIGNAL RT ANGLE SOLDER TAIL		
molex MOLEX INCORPORATED		
DOCUMENT NO. SD-45844-002	SHEET NO. 3	
SIZE A THIS DRAWING CONTAINS INFORMATION THAT IS PROPRIETARY TO MOLEX INCORPORATED AND SHOULD NOT BE USED WITHOUT WRITTEN PERMISSION		

6

5

4

3

2

1

D

C

B

A

ADD END LATCH OPTION

EC NO: UCP2015-0887
 DRWN: JSCHAFAER 2014/11/06
 CHKD:
 APPR: APATEL 2014/11/10

REV	DESCRIPTION
A	

QUALITY SYMBOLS

▼=0

∇=0

GENERAL TOLERANCES (UNLESS SPECIFIED)		
	mm	INCH
4 PLACES	± ---	± ---
3 PLACES	± ---	± ---
2 PLACES	± 0.25	± ---
1 PLACE	± ---	± ---
ANGULAR ±1/2°		
DRAFT WHERE APPLICABLE MUST REMAIN WITHIN DIMENSIONS		

DIMENSION STYLE	
MM ONLY	
DRAWN BY	DATE
JSCHAFAER	2011/11/07
CHECKED BY	DATE
APPROVED BY	DATE
APATEL	2014/08/25
MATERIAL NO.	
SEE CHARTS	
SIZE	
A	

SCALE	DESIGN UNITS	THIRD ANGLE PROJECTION	
2:1	METRIC		
TITLE			
POWER EDGE ASSEMBLY SIGNAL RT ANGLE SOLDER TAIL			
APATEL MOLEX INCORPORATED			
DOCUMENT NO.		SHEET NO.	
SD-45844-002		4 OF 4	

5

4

3

2

1

Looking for pricing, stock, or lifecycle information?

Click below to explore more details on WIN SOURCE:

 [View 458440004 on WIN SOURCE](#)

 [Molex, LLC Information](#)

Optimize Your Supply Chain with WIN SOURCE Solutions

-  Global Sourcing Solution
-  Obsolete Management
-  Cost Control Management
-  Shortage Management
-  Alternative Solution
-  Excess Inventory Management