



**THE DATASHEET OF  
M20-6103245**



# Customer Information Sheet

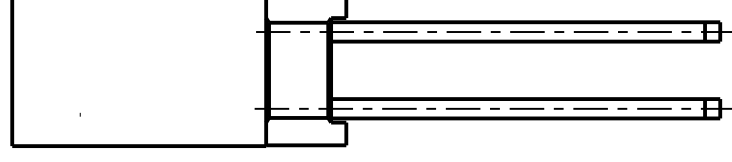
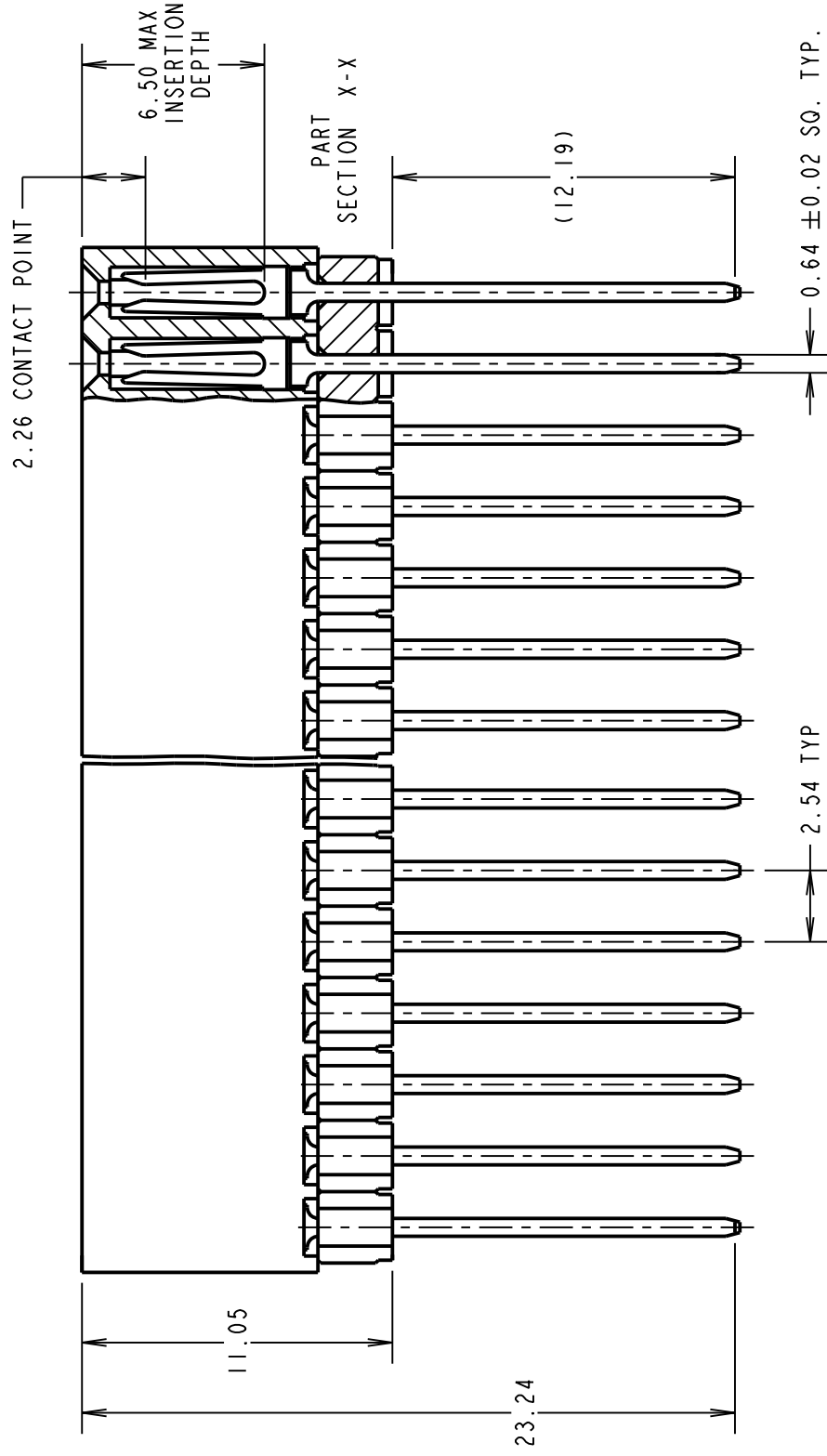
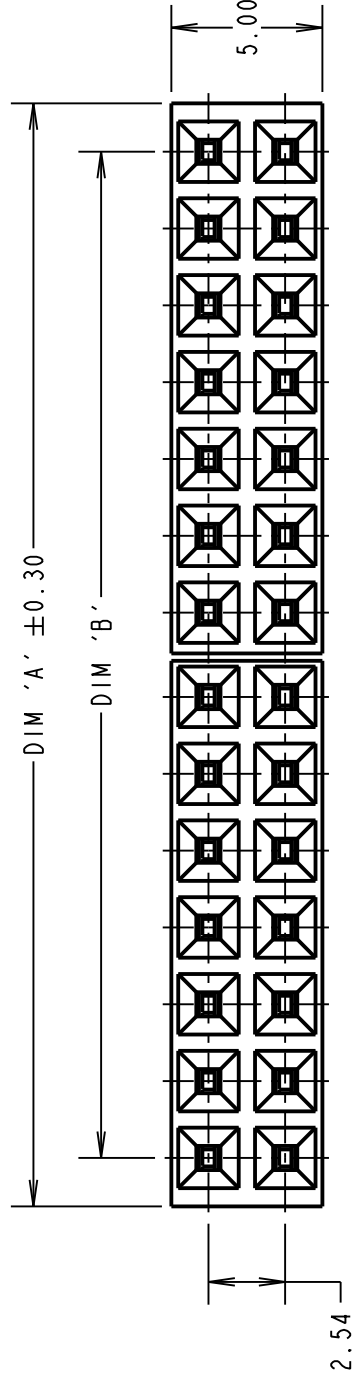
DRAWING No.: M20-610XX45

SHEET 2 OF 2

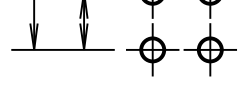
IF IN DOUBT - ASK

(C)

NOT TO SCALE



NOTE  
1. A  
SPE  
MA  
C  
FI  
C  
EL  
C  
C  
I  
V  
ME  
I  
W  
EN  
PA  
T  
FOR  
SPE



REC

No. OF CONTACTS PER ROW	DIM 'A'	DIM 'B'
20	51.46	48.26
32	81.94	78.74

**HARWIN**  
www.harwin.com  
technical@harwin.com

THIS DRAWING AND ANY INFORMATION OR DESCRIPTIVE MATTER SET OUT HEREON ARE CONFIDENTIAL AND COPYRIGHT PROPERTY OF THE HARWIN GROUP AND MUST NOT BE DISCLOSED, LOANED, COPIED OR USED FOR MANUFACTURING, TENDERING OR FOR ANY OTHER PURPOSE WITHOUT THEIR WRITTEN PERMISSION.

UNLESS STATED  
TOLERANCES  
X = ±1mm  
X.X = ±0.50mm  
X.XX = ±0.10mm  
X.XXX = ±0.01mm  
ANGLES = ±5°

MATER  
FINI  
S/ARI

C  
N  
2  
F  
4

## Looking for pricing, stock, or lifecycle information?

Click below to explore more details on WIN SOURCE:

[View M20-6103245 on WIN SOURCE](#)

[Harwin Inc. Information](#)

## Optimize Your Supply Chain with WIN SOURCE Solutions

- ✓ Global Sourcing Solution
- ✓ Obsolete Management
- ✓ Cost Control Management
- ✓ Shortage Management
- ✓ Alternative Solution
- ✓ Excess Inventory Management