



**THE DATASHEET OF
LM3674MF-1.8EV**



AN-1427 LM3674 Evaluation Board

1 Introduction

The LM3674 evaluation board is a working demonstration of a step down DC-DC converter. This document contains information about the evaluation board. For further information on buck converter topology, device electrical characteristics, and component selection, see the device-specific data sheet.

2 General Description

The LM3674 converts high input voltages to lower output voltages with high efficiency through an inductor based switching topology. The device operates at a fixed-frequency of 2 MHz (typ.) providing high efficiency during pulse width modulation (PWM) mode. The LM3674 is available in both fixed and adjustable output voltage options ranging from 1.0 V to 3.3 V in a SOT23-5 package.

3 Operating Conditions

- V_{IN} range: $2.7\text{ V} \leq V_{IN} \leq 5.5\text{ V}$
- Recommended load current: $0\text{ mA} \leq I_{OUT} \leq 600\text{ mA}$
- Ambient temperature (T_A) range: -30°C to $+85^\circ\text{C}$
- Junction temperature (T_J) range: -30°C to $+125^\circ\text{C}$

4 Typical Application

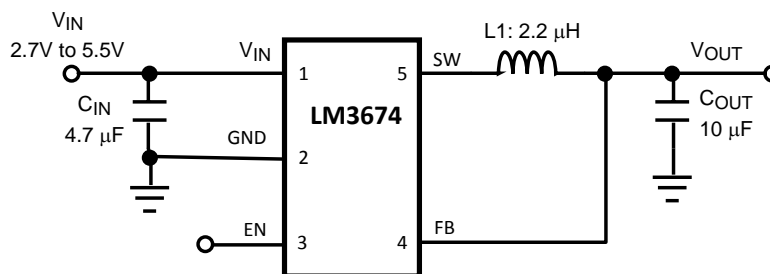


Figure 1. Typical Application Circuit: Fixed Voltage

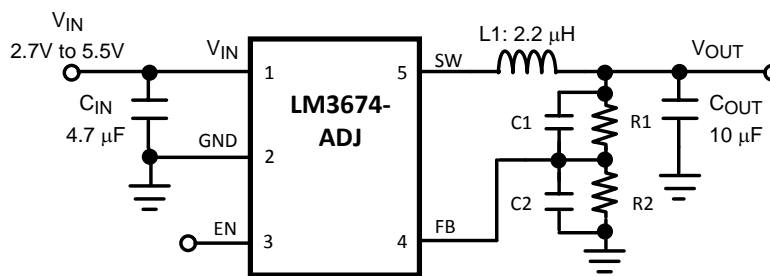


Figure 2. Typical Application Circuit: Adjustable Voltage

All trademarks are the property of their respective owners.

5 Output Voltage Selection for LM3674MF-ADJ

The output voltage of the adjustable parts can be programmed through the resistor network connected from V_{OUT} to FB to GND. The resistor from FB to GND (R_2) should be 200 k Ω to keep the current drawn through this network small, but large enough that it is not susceptible to noise. If R_2 is 200 k Ω , and given the V_{FB} is 0.5 V, then the current through the resistor feedback network will be 2.5 μ A. The output voltage formula is:

$$V_{OUT} = V_{FB} \left(\frac{R_1}{R_2} + 1 \right) \quad (1)$$

V_{OUT} : output voltage (V)

V_{FB} : feedback voltage (0.5 V typical)

R_1 : feedback resistor from V_{OUT} to FB (Ω)

R_2 : feedback resistor from FB to GND (Ω)

For the fixed output voltage parts the feedback resistors are internal. Place a 0 Ω resistor for R_1 .

The bypass capacitors C_1 and C_2 (labeled C_3 and C_4 on Evaluation Board) in parallel with the feedback resistors are chosen for stable operation. Below are the formulas for C_1 and C_2 .

$$C_1 = \frac{1}{2 \times \pi \times R_1 \times 45 \text{ kHz}} \quad (2)$$

$$C_2 = \frac{1}{2 \times \pi \times R_2 \times 45 \text{ kHz}} \quad (3)$$

Table 1. LM3674-ADJ Configurations for Various V_{out} (Circuit of Figure 2)

V_{OUT} (V)	R_1 (k Ω)	R_2 (k Ω)	C_1 (pF)	C_2 (pF)	L (μ H)	C_{IN} (μ F)	C_{OUT} (μ F)
1.0	200	200	18	None	2.2	4.7	10
1.1	191	158	18	None	2.2	4.7	10
1.2	280	200	12	None	2.2	4.7	10
1.5	357	178	10	None	2.2	4.7	10
1.6	442	200	8.2	None	2.2	4.7	10
1.7	432	178	8.2	None	2.2	4.7	10
1.8	464	178	8.2	None	2.2	4.7	10
1.875	523	191	6.8	None	2.2	4.7	10
2.5	402	100	8.2	None	2.2	4.7	10
2.8	464	100	8.2	33	2.2	4.7	10
3.3	562	100	6.8	33	2.2	4.7	10

6 Powering the LM3674 for Bench Measurement

When powering the LM3674 with a bench power supply, it is recommended to place a 100 μ F tantalum capacitor across the V_{IN} and GND supply terminals of the bench power supply. This capacitor reduces the input spike caused by the power supply and long power cables. The combination of the power supply and inductance within the power cables produce a large voltage spike that may damage the device. In addition, consideration must be given to the enable pin of the device. The enable should never be taken high, until minimum specified operating voltage of 2.7 V is reached. The enable pin should also never exceed the input voltage.

7 Connection Diagram and Package Mark Information

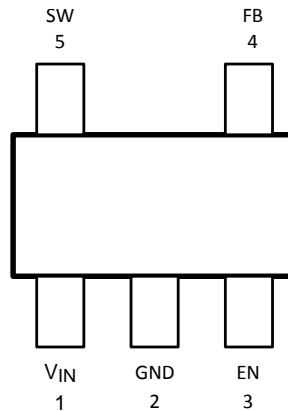


Figure 3. SOT23–5 Package, Top View

8 Pin Descriptions (SOT23-5)

Table 2. Pin Descriptions

Pin No	Name	Description
1	V _{IN}	Power supply input. Connect to the input filter capacitor (Figure 1)
2	GND	Ground pin
3	EN	Enable input. The device is in shutdown mode when voltage to this pin is <0.4 V and enabled when >1.0 V. Do not leave this pin floating.
4	FB	Feedback analog input. Connect directly to the output filter capacitor for fixed voltage versions. For adjustable version external resistor dividers are required (Figure 2). The internal resistor dividers are disabled for the adjustable version.
5	SW	Switching node connection to the internal PFET switch and NFET synchronous rectifier.

9 Evaluation Board Layout

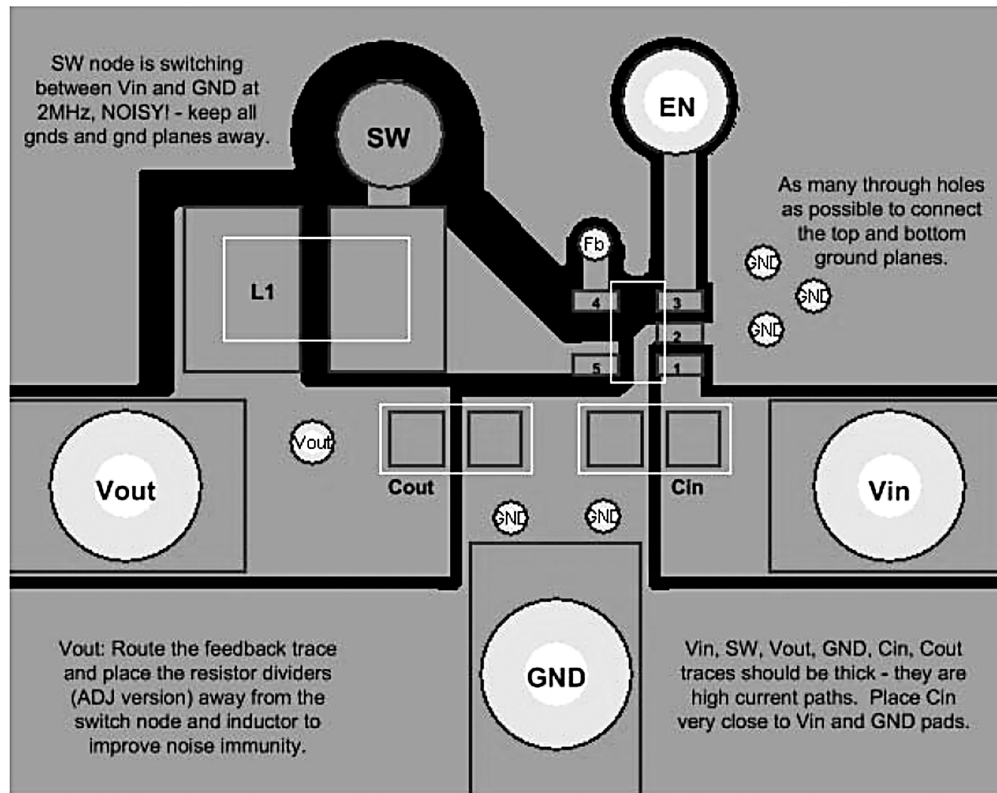


Figure 4. Top Layer (SOT23-5)

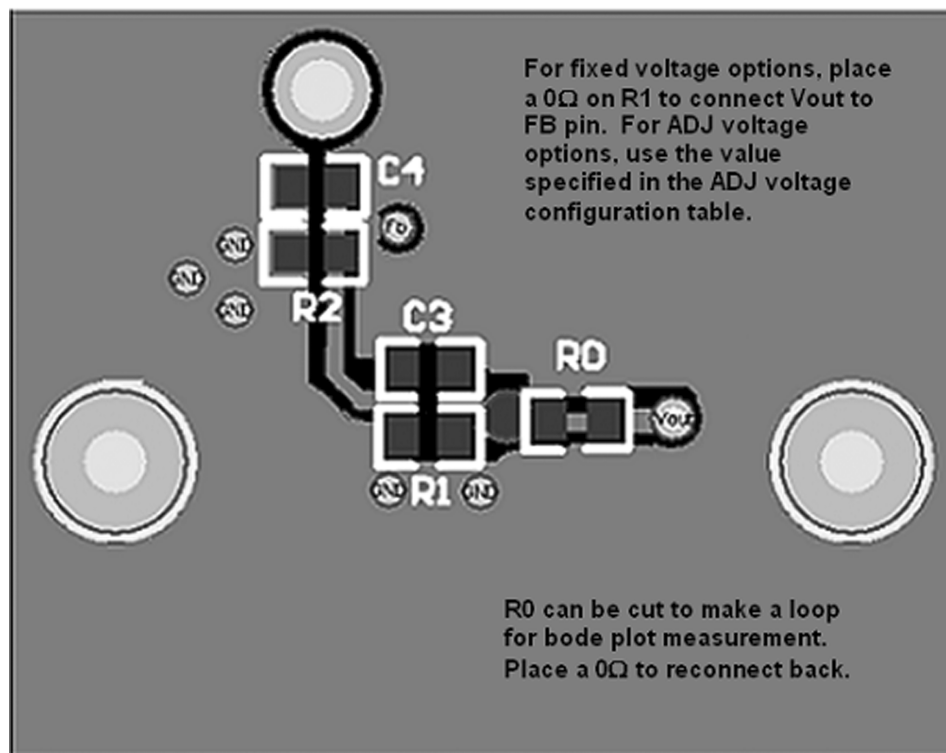


Figure 5. Bottom Layer (SOT23-5)

Table 3. Bill of Materials (BOM) For Common Configurations

	Manufacture	Manufacture No	Description
LM3674 - 1.5 V and 1.8 V FIXED			
C1 (input C)	TDK	C2012XR0J475K	4.7 μ F, 6.3 V, 0805, 10%
C2 (output C)	TDK	C2012X5R0J106K	10 μ F, 6.3 V, 0805, 10%
L1 (inductor)	Coilcraft	DO3314-222MX	2.2 μ H inductor, 1.6A sat
R1 (V_{OUT} to V_{FB})	Vishay	CRCW06030R00F	0 Ω , 0603, 1%
R2 (V_{FB} to GND)	None		
C3 (V_{OUT} to V_{FB})	None		
C4 (V_{FB} to GND)	None		
LM3674 - 3.3 V ADJUSTABLE			
C1 (input C)	TDK	C2012XR0J475K	4.7 μ F, 6.3 V, 0805, 10%
C2 (output C)	TDK	C2012X5R0J106K	10 μ F, 6.3 V, 0805, 10%
L1 (inductor)	Coilcraft	DO3314-222MX	2.2 μ H inductor, 1.6A sat
R1 (V_{OUT} to V_{FB})	Vishay	CRCW06034643F	562 k Ω , 0603, 1%
R2 (V_{FB} to GND)	Vishay	CRCW06031783F	100 k Ω , 0603, 1%
C3 (V_{OUT} to V_{FB})	Vishay	VJ0603A6R8KXAA	6.8 pF, 0603, 10%
C4 (V_{FB} to GND)	Vishay	VJ0603A8R2KXAA	33 pF, 0603, 10%
COMMON TO ALL			
V_{IN} banana jack - red	Johnson Components	108-0902-001	Connector, insulated banana jack (red)
V_{OUT} banana jack - yellow	Johnson Components	108-0907-001	Connector, insulated banana jack (yellow)
GND banana jack - black	Johnson Components	108-0903-001	Connector, insulated banana jack (black)
Post for EN	Turrent	1573-2	Upright post from evaluation board
Post for V_{IN}	Turrent	1502-2	Upright post from evaluation board
Post for V_{OUT}	Turrent	1502-2	Upright post from evaluation board
Post for GND	Turrent	1502-2	Upright post from evaluation board

IMPORTANT NOTICE

Texas Instruments Incorporated and its subsidiaries (TI) reserve the right to make corrections, enhancements, improvements and other changes to its semiconductor products and services per JESD46, latest issue, and to discontinue any product or service per JESD48, latest issue. Buyers should obtain the latest relevant information before placing orders and should verify that such information is current and complete. All semiconductor products (also referred to herein as "components") are sold subject to TI's terms and conditions of sale supplied at the time of order acknowledgment.

TI warrants performance of its components to the specifications applicable at the time of sale, in accordance with the warranty in TI's terms and conditions of sale of semiconductor products. Testing and other quality control techniques are used to the extent TI deems necessary to support this warranty. Except where mandated by applicable law, testing of all parameters of each component is not necessarily performed.

TI assumes no liability for applications assistance or the design of Buyers' products. Buyers are responsible for their products and applications using TI components. To minimize the risks associated with Buyers' products and applications, Buyers should provide adequate design and operating safeguards.

TI does not warrant or represent that any license, either express or implied, is granted under any patent right, copyright, mask work right, or other intellectual property right relating to any combination, machine, or process in which TI components or services are used. Information published by TI regarding third-party products or services does not constitute a license to use such products or services or a warranty or endorsement thereof. Use of such information may require a license from a third party under the patents or other intellectual property of the third party, or a license from TI under the patents or other intellectual property of TI.

Reproduction of significant portions of TI information in TI data books or data sheets is permissible only if reproduction is without alteration and is accompanied by all associated warranties, conditions, limitations, and notices. TI is not responsible or liable for such altered documentation. Information of third parties may be subject to additional restrictions.

Resale of TI components or services with statements different from or beyond the parameters stated by TI for that component or service voids all express and any implied warranties for the associated TI component or service and is an unfair and deceptive business practice. TI is not responsible or liable for any such statements.

Buyer acknowledges and agrees that it is solely responsible for compliance with all legal, regulatory and safety-related requirements concerning its products, and any use of TI components in its applications, notwithstanding any applications-related information or support that may be provided by TI. Buyer represents and agrees that it has all the necessary expertise to create and implement safeguards which anticipate dangerous consequences of failures, monitor failures and their consequences, lessen the likelihood of failures that might cause harm and take appropriate remedial actions. Buyer will fully indemnify TI and its representatives against any damages arising out of the use of any TI components in safety-critical applications.

In some cases, TI components may be promoted specifically to facilitate safety-related applications. With such components, TI's goal is to help enable customers to design and create their own end-product solutions that meet applicable functional safety standards and requirements. Nonetheless, such components are subject to these terms.

No TI components are authorized for use in FDA Class III (or similar life-critical medical equipment) unless authorized officers of the parties have executed a special agreement specifically governing such use.

Only those TI components which TI has specifically designated as military grade or "enhanced plastic" are designed and intended for use in military/aerospace applications or environments. Buyer acknowledges and agrees that any military or aerospace use of TI components which have **not** been so designated is solely at the Buyer's risk, and that Buyer is solely responsible for compliance with all legal and regulatory requirements in connection with such use.

TI has specifically designated certain components as meeting ISO/TS16949 requirements, mainly for automotive use. In any case of use of non-designated products, TI will not be responsible for any failure to meet ISO/TS16949.

Products

Audio	www.ti.com/audio
Amplifiers	amplifier.ti.com
Data Converters	dataconverter.ti.com
DLP® Products	www.dlp.com
DSP	dsp.ti.com
Clocks and Timers	www.ti.com/clocks
Interface	interface.ti.com
Logic	logic.ti.com
Power Mgmt	power.ti.com
Microcontrollers	microcontroller.ti.com
RFID	www.ti-rfid.com
OMAP Applications Processors	www.ti.com/omap
Wireless Connectivity	www.ti.com/wirelessconnectivity

Applications

Automotive and Transportation	www.ti.com/automotive
Communications and Telecom	www.ti.com/communications
Computers and Peripherals	www.ti.com/computers
Consumer Electronics	www.ti.com/consumer-apps
Energy and Lighting	www.ti.com/energy
Industrial	www.ti.com/industrial
Medical	www.ti.com/medical
Security	www.ti.com/security
Space, Avionics and Defense	www.ti.com/space-avionics-defense
Video and Imaging	www.ti.com/video

TI E2E Community

e2e.ti.com

Looking for pricing, stock, or lifecycle information?

Click below to explore more details on WIN SOURCE:

 [View LM3674MF-1.8EV](#) on WIN SOURCE

 [Texas Instruments](#) Information

Optimize Your Supply Chain with WIN SOURCE Solutions

-  Global Sourcing Solution
-  Obsolete Management
-  Cost Control Management
-  Shortage Management
-  Alternative Solution
-  Excess Inventory Management