



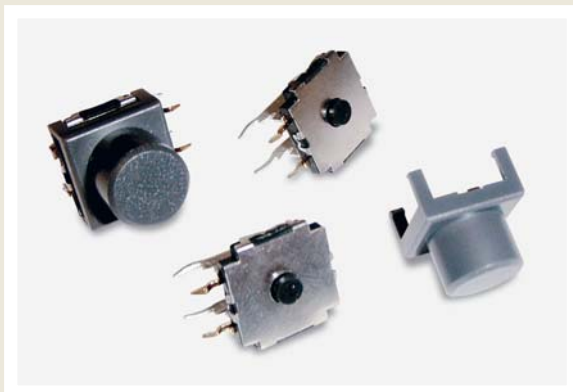
**THE DATASHEET OF  
TL6190BUTTON**





# SERIES TL 6190 SWITCHES

## TACT SWITCHES - SEALED RIGHT ANGLE



### FEATURES & BENEFITS

- ▶ Reliable dome technology
- ▶ Strong tactile force
- ▶ Multiple operating force
- ▶ Process sealed
- ▶ Right angle

### APPLICATIONS/MARKETS

- ▶ Telecommunications
- ▶ Consumer electronics
- ▶ Audio/visual
- ▶ Medical equipment
- ▶ Computer/servers/peripherals

### SPECIFICATIONS

Contact Rating:	50mA@12 VDC
Life Expectancy (Mechanical):	100,000 cycles
Life Expectancy (Electrical):	100,000 cycles
Contact Resistance:	100mΩ max. intial
Insulation Resistance:	100MΩ (Min@ 100V)
Dielectric Strength:	500 VDC
Actuation Force:	220 ± 60 gf
Operating Temperature (Switch):	-40°C to +105°C
Operating Temperature (Button):	-40°C to +85°C
Travel:	0.50 ± 0.20mm

### MATERIALS

Housing:	Nylon
Cover:	Stainless Steel
Actuator:	Silicone rubber
Bracket:	Tin, plated
Terminals:	Copper alloy, plated
Contact:	Copper alloy, plated



### HOW TO ORDER

SERIES	MODEL NO.	ACTUATOR ("L" Dimension)	OPERATING FORCE	PLATING	BUTTON	BUTTON COLOR
TL	6190	A = 2.90mm	F160 F220 F320	Q = Silver R = Gold	R = Round	GRY = Gray BLK = Black WHT = White RED = Red

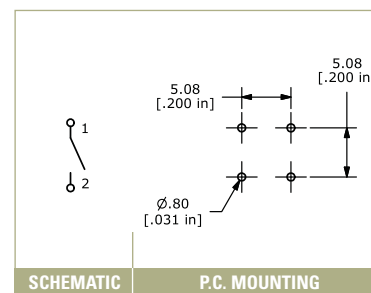
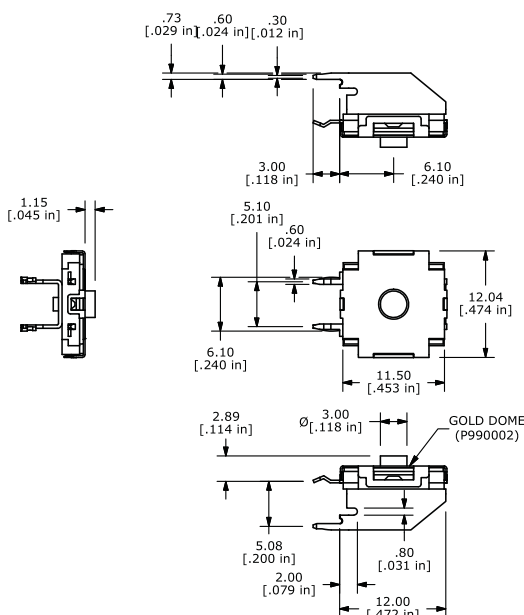


### Example Ordering Number

TL-6190-A-F220-Q-R-GRY

Specifications subject to change without notice.

## TL 6190









## Looking for pricing, stock, or lifecycle information?

Click below to explore more details on WIN SOURCE:

 [View TL6190BUTTON on WIN SOURCE](#)

 [E-Switch Information](#)

## Optimize Your Supply Chain with WIN SOURCE Solutions

-  Global Sourcing Solution
-  Obsolete Management
-  Cost Control Management
-  Shortage Management
-  Alternative Solution
-  Excess Inventory Management