



**THE DATASHEET OF
KD173050000G**



PRODUCT NUMBER	PITCH
KDxx30x000JUG	3.81 mm

PART NO.: KD xx 3 0 x 0 00J

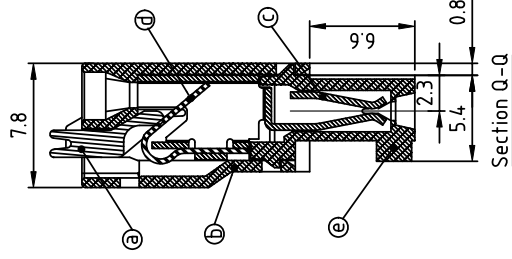
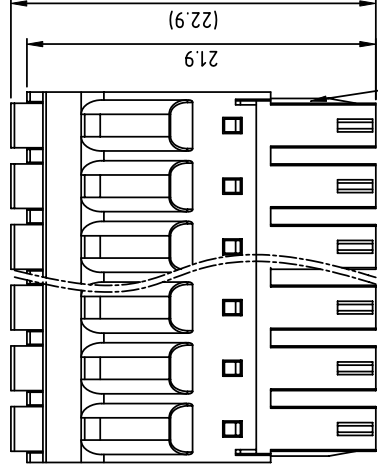
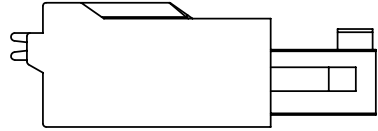
Dim L=N×3.81±0.39
Dim P=(N-1)×3.81

N=Number of poles

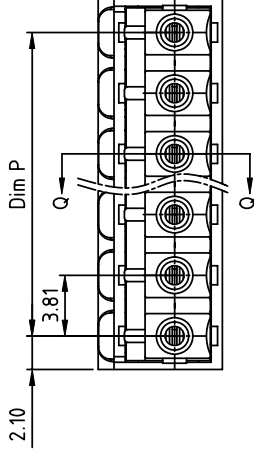
POLES	Dim P	Dim L
2p-6p	±0.15	±0.15
7p-12p	±0.20	±0.25
13p-16p	±0.25	±0.30
17p-24p	±0.30	±0.40

Color

Solid block	No. of poles	Color
0	2 poles	Black (RAL9005)
2	2 poles	Red (RAL3001/D)
3	2 poles	Orange (RAL2011/D)
4	3 poles	Yellow (RAL1018 / /)
5	3 poles	Green (RAL6018 / /)
6	24 poles	Blue (RAL5015 / /)
8	24 poles	Grey (RAL7035 / /)
9	24 poles	White (RAL1102)
C	24 poles	Green (RAL6018 / /)



2P-6P Ribs on both sides,
7P-24P No rib





- Material:
- Item ② Termin
 - Item ④ Top bo
 - Item ⑤ Femat
 - Item ⑦ Spring
 - Item ⑧ Botto
- Electrical:
- Voltage ratir
 - Current ratir
 - Wire range:
 - Solid wire(AV)
 - Stranded wir
 - Wire strip le
 - Withstanding
 - Operating te
 - Safety Appro

mat'l. code		surface	tolerances unless oth
ltr	ecn no	ASME Y14.5	
dr	date		
		angles	
		X ^{±1°}	
		dr	EVIN ZHON
		engr	EVIN ZHON
		chr	HANKE FEI
		appd	SHI JUN
sheet	revision	A	
index	sheet	1	

Looking for pricing, stock, or lifecycle information?

Click below to explore more details on WIN SOURCE:

-  [View KD173050000G on WIN SOURCE](#)
-  [Amphenol Anytek Information](#)

Optimize Your Supply Chain with WIN SOURCE Solutions

-  Global Sourcing Solution
-  Obsolete Management
-  Cost Control Management
-  Shortage Management
-  Alternative Solution
-  Excess Inventory Management