

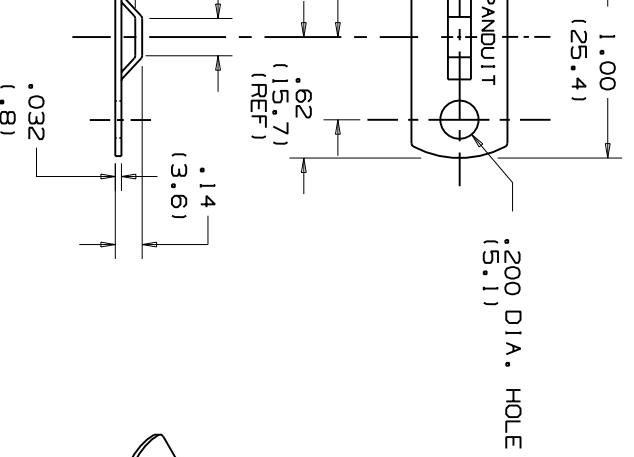


**THE DATASHEET OF
MBMS-S10-MY**



A RESTRICTED BASIS AND IS NOT TO BE USED IN ANY WAY DETRIMENTAL TO THE INTERESTS OF PANDUIT CORP.

PANDUIT PART NUMBER*	WEIGHT lbs/100 pcs (g)/100 pcs	USE WITH ANY OF THESE CABLE TIE CROSS-SECTIONS	MAX. SCREW SIZE
MBMS-S10Y	.123 (55.8)	MINIATURE INTERMEDIATE STANDARD	# 10 (M5)



- NOTES:
- SEE CURRENT PRICE SHEET FOR PART NUMBER SUFFIX DESIGNATION FOR PACKAGE SIZE.
 - MATERIAL: ALUMINUM ALLOY 3003-H14 (HALF HARD, TEMPER).
 - FINISH: ROHS COMPLIANT TCP COATING CORROSION RESISTANCE: 168 HRS SALT SPRAY PER ASTM-B-117

DIMENSIONS IN BRACKETS ARE METRIC (mm)
 CAD FILENAME/LAYERS

PANDUIT CORP. TINLEY PARK, ILLINOIS

MBMS-S10Y
 METAL MOUNT

UNLESS OTHERWISE SPECIFIED, DIMENSIONAL TOLERANCES ARE:
 (.X) ±0.05 (1.3) (.XXX) ±0.010 (0.25)
 (.XX) ±0.02 (0.5) ANGLES ± 5°

UNLESS OTHERWISE SPECIFIED, ALL DIMENSIONS ARE GIVEN IN INCHES, THIRD ANGLE PROJECTION.

INITIAL RELEASE	GB0239LW	R				DRAWN BY JAD	MAT'L:	SCALE NONE	DWG NO. GB0239LW	DWG A
DESCRIPTION	ECN - R	CUST	SUP			DATE 7/27/06	SEE NOTE 2, 3			SIZE

Looking for pricing, stock, or lifecycle information?

Click below to explore more details on WIN SOURCE:

 [View MBMS-S10-MY on WIN SOURCE](#)

 [Panduit Corp](#) Information

Optimize Your Supply Chain with WIN SOURCE Solutions

-  Global Sourcing Solution
-  Obsolete Management
-  Cost Control Management
-  Shortage Management
-  Alternative Solution
-  Excess Inventory Management