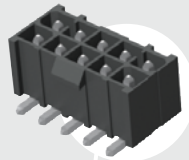




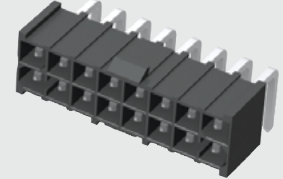
**THE DATASHEET OF
IPBT-105-H1-T-D-RA-GP**



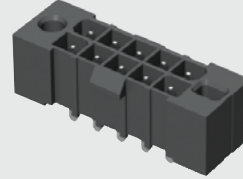
IPBT-105-H2-T-D-K



IPBT-108-H1-T-D-RA-K



IPBT-105-H1-T-D-GP



IPBT SERIES

(4.19 mm) .165"

ISOLATED TERMINAL POWER HEADER

SPECIFICATIONS

For complete specifications see www.samtec.com?IPBT

Insulator Material: Black Liquid Crystal Polymer

Contact Material: High Copper Alloy

Plating: Sn over 50 μm (1.27 μm) Ni

Operating Temp Range: -55 °C to +105 °C

Voltage Rating: 400 VAC/565 VDC

Standard Creepage: (3.66 mm) .144" (-S)

(3.63 mm) .143" (-D)

Standard Clearance: (3.05 mm) .120"

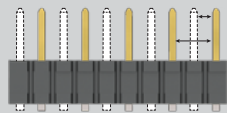
RoHS Compliant: Yes

Lead-Free Solderable: Yes

Board Mates: IPBS

Cable Mates: PMSD, PMSS

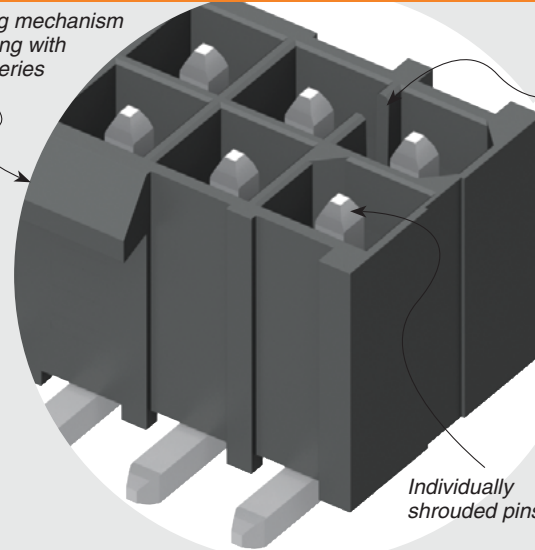
CREEPAGE AND CLEARANCE



Selectively loading contacts achieves customer specific creepage and clearance requirements. Contact asp@samtec.com

Latching mechanism for mating with IPBD Series

Keyed polarization



Individually shrouded pins

RUGGEDIZED BY SAMTEC

- Individually shrouded contacts
- Polarized guide post hole option

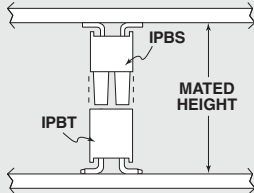
IPBT/IPBS	
PINS POWERED	CURRENT RATING (PER CONTACT)
2	10.3 A
4	8.4 A
6	7.6 A
8	7.1 A
30	6.0 A

RECOGNITIONS

For complete scope of recognitions see www.samtec.com/quality



APPLICATION



IPBT/IPBS LEAD STYLE	MATED HEIGHT*
H1-01	(15.25) .600
-H2-02	(16.84) .663

*Processing conditions will affect mated height.

ALSO AVAILABLE (MOQ Required)

- Other sizes
- Other lead styles

Note: Some lengths, styles and options are non-standard, non-returnable.



02, 03, 04, 05, 08, 10, 15
(-D only)

02, 03, 04, 05, 08, 10
(-S only)
(Standard sizes)

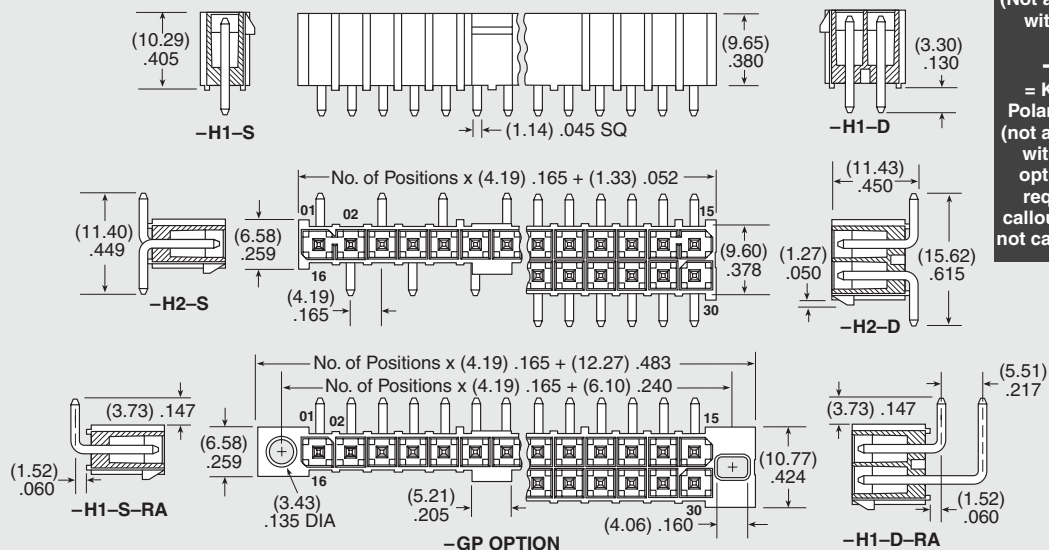
-H1 = Through-hole
-H2 = Surface Mount

-T = Matte Tin

-S = Single Row
-D = Double Row

-RA = Right-angle (Lead Style -H1 only)
-GP = Guide Post Holes (Not available with -K)



-K = Keyed Polarization (not available with -GP option, is required callout if -GP not called out)



Due to technical progress, all designs, specifications and components are subject to change without notice.

Looking for pricing, stock, or lifecycle information?

Click below to explore more details on WIN SOURCE:

-  [View IPBT-105-H1-T-D-RA-GP on WIN SOURCE](#)
-  [Samtec Inc. Information](#)

Optimize Your Supply Chain with WIN SOURCE Solutions

-  Global Sourcing Solution
-  Obsolete Management
-  Cost Control Management
-  Shortage Management
-  Alternative Solution
-  Excess Inventory Management