



**THE DATASHEET OF  
ATS-1043-C1-R0**



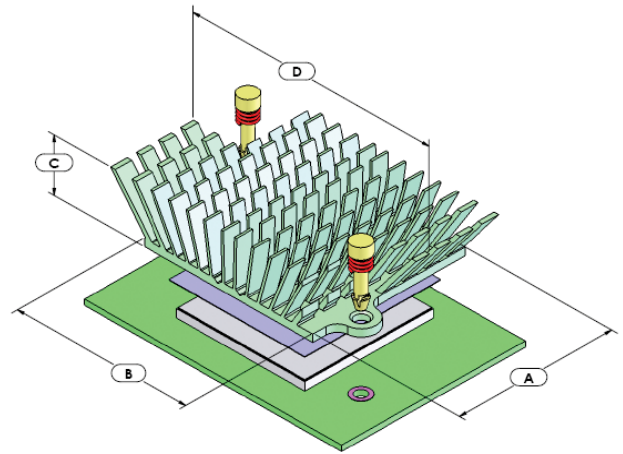


# maxiFLOW™ Cross Cut High Performance Heat Sinks with Plastic Push Pin

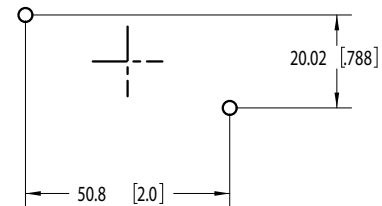
**ATS PART # ATS-1043-C1-R0**

## Features & Benefits

- » For larger heat sinks and higher pre-loads, push pins with compression springs are an effective mounting choice. The push pin has a flexible barb at the end that is designed to engage with a pre-drilled hole in a PWB. The compression spring adds the necessary force to hold the assembly together. Provides better thermal performance than comparable size straight fin and pin fin heat sinks.
- » Features proven high performance maxiFLOW™ heat sink spread fin array to maximize cooling surfaces.
- » Ideal for tight spaced components where wider heat sinks can't be used.
- » Provided with pre-assembled thermal interface material centered on base.
- » Nylon pushpin with steel compression spring.
- » Recommended through hole size in PCB is 3.00 mm.



HOLE PATTERN B



*\*Image above is for illustration purposes only.*

## Thermal Performance

AIR VELOCITY		THERMAL RESISTANCE (°C/W UNDUCTED)	
FT/MIN	M/S	AIR FLOW STRAIGHT	AIR FLOW SIDEWAYS
200	1.0	1.9	3.6
300	1.5	1.6	2.8
400	2.0	1.3	2.1
500	2.5	1.1	1.6
600	3.0	1.0	1.3

## Product Details

DIMENSION A	DIMENSION B	DIMENSION C	DIMENSION D	INTERFACE MATERIAL	FINISH
41 mm	45 mm	25 mm	79 mm	CHOMERICS T766	GREEN ANODIZED

### NOTES:

- 1) Dimension C = heat sink height from bottom of the base to the top of the fin field.
- 2) Thermal performance data are provided for reference only. Actual performance may vary by application.
- 3) ATS reserves the right to update or change its products without notice to improve the design or performance.
- 4) Contact ATS to learn about custom options available.



**ATS** ADVANCED THERMAL SOLUTIONS, INC.  
Innovations in Thermal Management®

**For more information, to find a distributor or to place an order, visit [www.Qats.com](http://www.Qats.com) or call: 781.769.2800 (North America); +31 (0) 3569 84715 (Europe).**

## Looking for pricing, stock, or lifecycle information?

Click below to explore more details on WIN SOURCE:

- [View \*\*ATS-1043-C1-R0\*\* on WIN SOURCE](#)
- [Advanced Thermal Solutions Inc. Information](#)

## Optimize Your Supply Chain with WIN SOURCE Solutions

- ✓ Global Sourcing Solution
- ✓ Obsolete Management
- ✓ Cost Control Management
- ✓ Shortage Management
- ✓ Alternative Solution
- ✓ Excess Inventory Management