



DFRobot Infrared sensor breakout (SKU:SEN0042)

Contents

- [1 Introduction](#)
 - [1.1 Applications](#)
 - [1.2 Specification](#)
 - [1.3 Connection Diagram](#)
 - [1.4 Sample Code](#)

Introduction



DFRobot Infrared sensor breakout (SKU:SEN0042)

This is an edge detection sensor from DFRobot. It will help your robot detect the edge of a precipice, preventing it from falling off a table or down the stairs to its certain demise! This IR distance sensor is connected to an arduino digital pin.

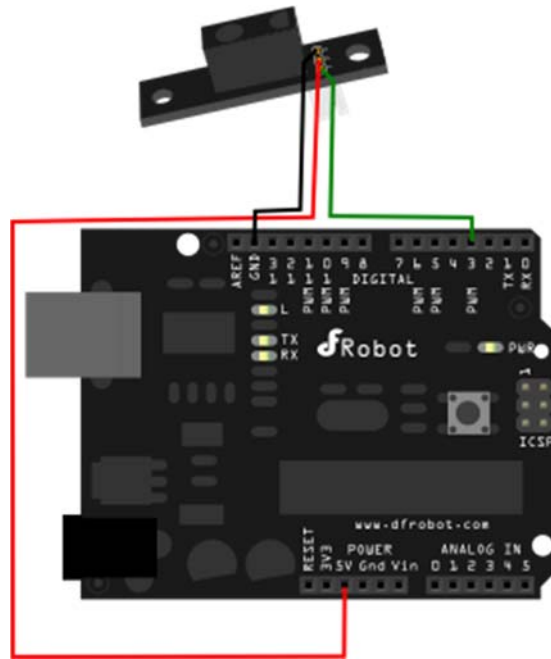
Applications

Edge detection sensor
Intelligent Mobile Robotics Platforms
Home Cleaning Robots

Specification

Supply Voltage: 2.7~6.2v
Current: < 10mA
Range distance: 1~10cm
Interface: 1 digital pin
Signal Voltage: Vcc-0.6v(High) 0.6v(Low)
Size: 35x10x15mm
Weight: < 5g

Connection Diagram




Infrared Sensor Connection Diagram

Sample Code

```
void setup(){  
  
  Serial.begin(57600);  
  
}  
  
void loop(){  
  
  Serial.print("Digital Signal:");  
  Serial.println(digitalRead(3),BIN);  
  delay(50);  
  
}
```

Looking for pricing, stock, or lifecycle information?

Click below to explore more details on WIN SOURCE:

 [View SEN0042 on WIN SOURCE](#)

 [DFRobot Information](#)

Optimize Your Supply Chain with WIN SOURCE Solutions

-  Global Sourcing Solution
-  Obsolete Management
-  Cost Control Management
-  Shortage Management
-  Alternative Solution
-  Excess Inventory Management