



THE DATASHEET OF
1571983-4



REVISIONS					
P	LTR	DESCRIPTION	DATE	DMN	APP'D
C4		REVISED PER ECO-15-015778	05NOV2015	NK	RH
C5		REVISED PER ECO-16-018654	15MAY2017	RK	PO
C6		REVISED PER ECO-17-007191	26MAY2017	RK	PO

SPECIFICATIONS:

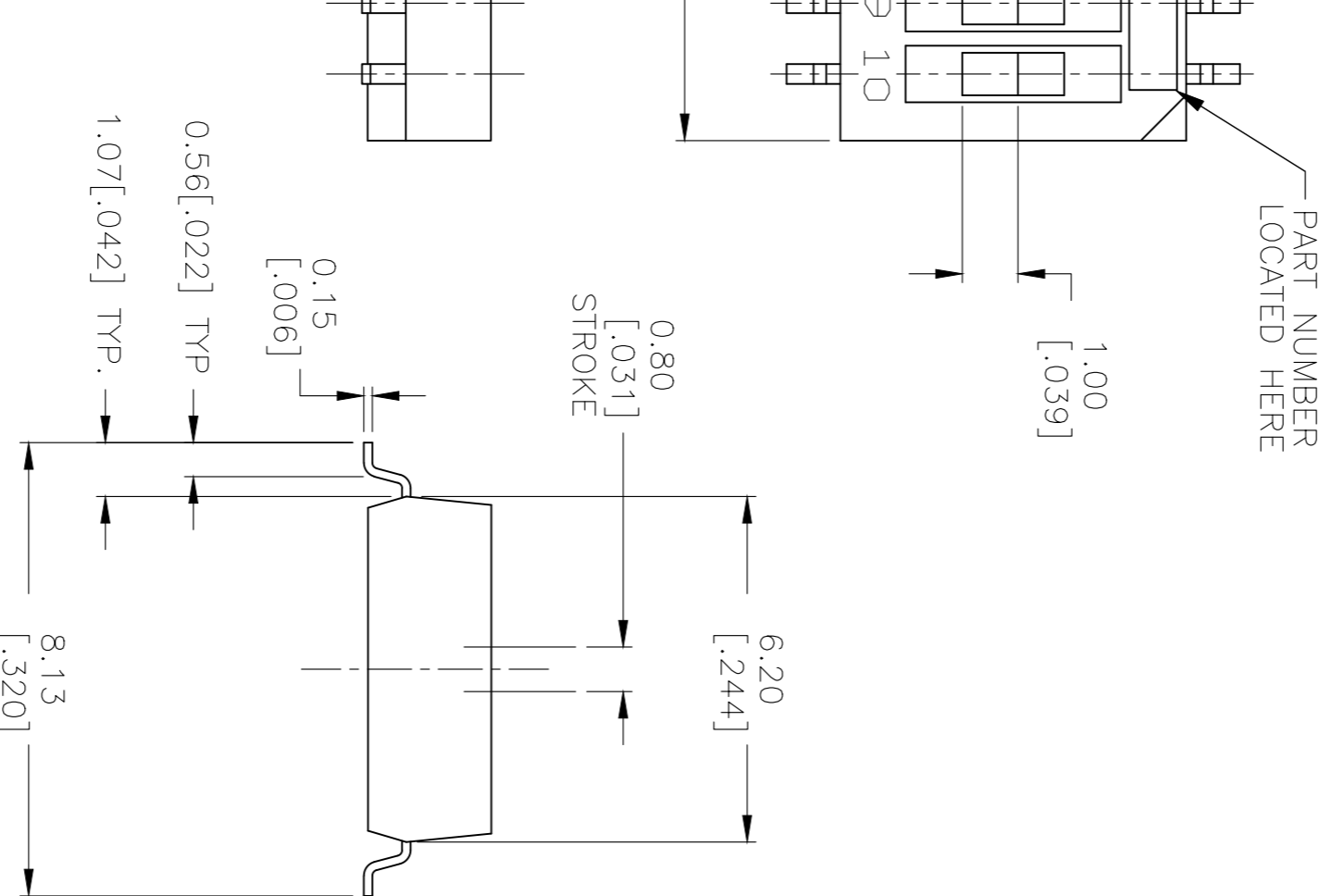
MATERIALS:

BASE: PPS UL94V-0
 COVER: PPS UL94V-0
 ACTUATOR: LCP UL94V-0
 MOVING CONTACT: COPPER ALLOY, GOLD OVER NICKEL PLATE
 FIXED CONTACT/TERMINAL: COPPER ALLOY, GOLD OVER NICKEL PLATE
 ELECTRICAL:
 CONTACT RATING: NON-SWITCHING, 100mA @ 50 VDC
 SWITCHING: 25mA @ 24 VDC.

INITIAL CONTACT RESISTANCE: 100mA MAX. @ 2 VDC, 10 mA.
 INSULATION RESISTANCE: 100 MEGOHMS MIN. @ 100 VDC.
 DIELECTRIC STRENGTH: 300 VAC, 1 MINUTE.
 LIFE: 1,000 CYCLES.

MECHANICAL:

OPERATING FORCE: 600G MAX.
 ENVIRONMENTAL:
 OPERATING TEMPERATURE: -22°F TO +185°F (-30°C TO +85°C).
 STORAGE TEMPERATURE: -49°F TO +212°F (-45°C TO +100°C).
 SOLDER HEAT RESISTANCE PER 109-201, CONDITION B
 SOLDERABILITY PER JIS C 0050 & JIS C 0053



- 1 PARTS WITH 'ON' SUFFIX SUPPLIED IN THE ON POSITION.
- 2 SUPPLIED WITH TAPE SEAL STANDARD.
- 3 FOR TAPE AND REEL PACKAGING- PART NO. GDHXXSTR SEE MODEL NUMBER CHART BELOW.
- 4 FOR NO SEAL OPTION = NS.
- 5 ALL MATERIALS AND FINISHES SHALL COMPLY WITH EU DIRECTIVE 2002/95/EC OF 27 JAN 2003 (ROHS)
- 6 OBSOLETE PARTS: OBSOLETE CIS STREAMLINING PER D.RENAUD/D.SINISI

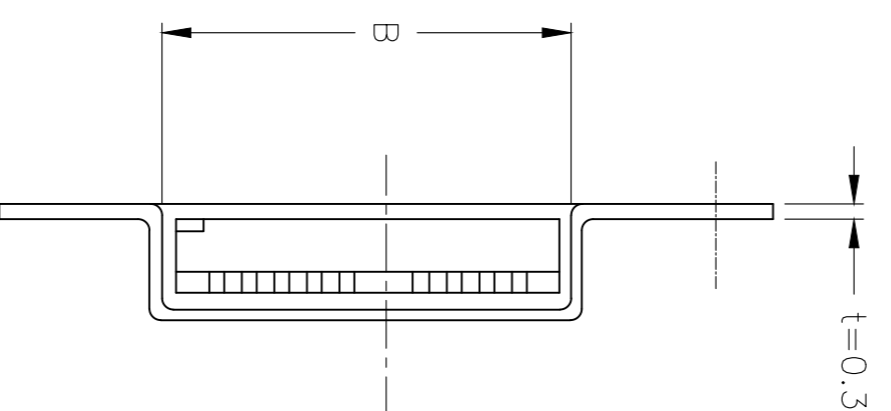
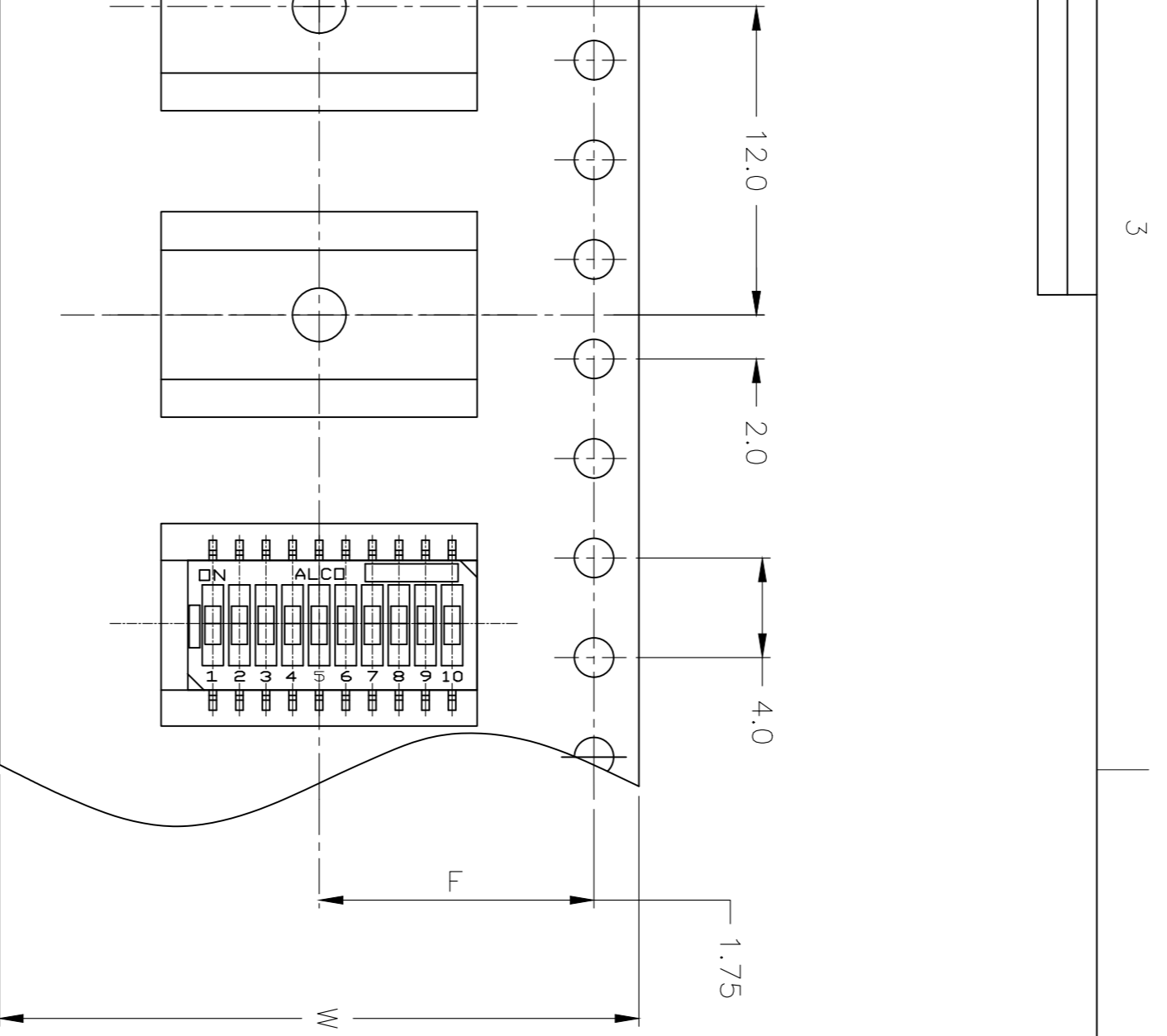
1	6.35 [.250]	8.74 [.344]	6	TAPE	GDH06STRON04	1-1571983-7
	11.43 [.450]	13.82 [.544]	10	NONE	GDH010STRNS04	1-1571983-6
1	1.27 [.050]	3.66 [.144]	2	TAPE	GDH02STRON04	1-1571983-5
	11.43 [.450]	13.82 [.544]	10	TAPE	GDH010STR04	1-1571983-4
	11.43 [.450]	13.82 [.544]	10	TAPE	GDH010S04	1-1571983-3
4	8.89 [.350]	11.28 [.444]	8	TAPE	GDH08STRNS04	1-1571983-2
	8.89 [.350]	11.28 [.444]	8	TAPE	GDH08STR04	1-1571983-1
	8.89 [.350]	11.28 [.444]	8	TAPE	GDH08S04	1-1571983-0
	6.35 [.250]	8.74 [.344]	6	TAPE	GDH06STR04	1571983-9
1	3.81 [.150]	6.20 [.244]	4	TAPE	GDH04STRON04	1571983-7
4	3.81 [.150]	6.20 [.244]	4	NONE	GDH04STRNS04	1571983-6
	3.81 [.150]	6.20 [.244]	4	TAPE	GDH04STR04	1571983-5
	3.81 [.150]	6.20 [.244]	4	TAPE	GDH04S04	1571983-4
	1.27 [.050]	3.66 [.144]	2	TAPE	GDH02STR04	1571983-3
	1.27 [.050]	3.66 [.144]	2	TAPE	GDH02SON04	1571983-2
	1.27 [.050]	3.66 [.144]	2	TAPE	GDH02S04	1571983-1
			M			
			L			
			POLE	SEAL	OLD T&B P/N	PART NUMBER

THIS DRAWING IS A CONTROLLED DOCUMENT.

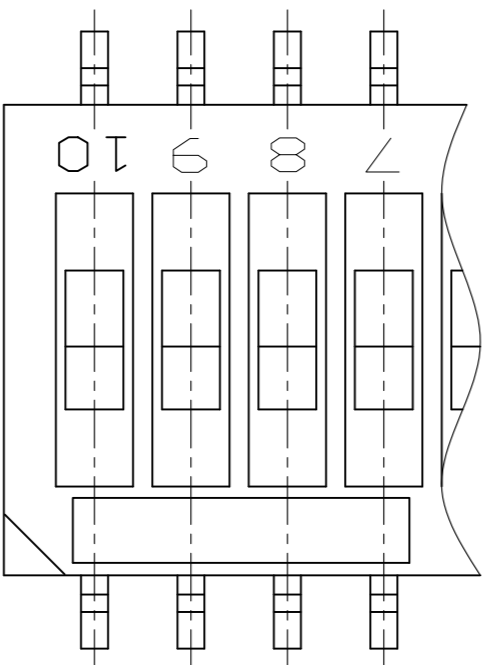
DMN	R. BROWN	15MAR05	NAME	STE TE Connectivity	
CHK	M. SARVER	15MAR05	AP'D	DIP SWITCH GDH SERIES	
AP'D	M. SARVER	15MAR05	PRODUCT SPEC	SIZE	A2
TOLERANCES UNLESS OTHERWISE SPECIFIED:			APPLICATION SPEC	QAGE CODE	00779
0 PLC	±	-	WEIGHT	DRAWING NO	1571983
1 PLC	±	0.25 [.010]		SCALE	8:1
2 PLC	±	-		SHEET	1 OF 2
3 PLC	±	-		REV	C6
4 PLC	±	-		RESTRICTED TO	
MATERIAL FINISH			CUSTOMER DRAWING		

1571983

REVISIONS				
P	LTR	DESCRIPTION	DATE	DWN / AP'D
-	-	SEE SHEET 1	-	-



→ DIRECTION OF FEED



NO. OF POS.	DIMENSION		
	W	F	B
2P	16.0	7.5	4.45
4P			7.0
6P	24.0	11.5	9.55
8P			12.1
10P			14.6

1571983

THIS DRAWING IS A CONTROLLED DOCUMENT.			
DIMENSIONS: mm [INCHES]		TOLERANCES UNLESS OTHERWISE SPECIFIED:	
	0 PLC	±	-
	1 PLC	±	-
	2 PLC	±	0.25 [0.01]
	3 PLC	±	-
	4 PLC	±	-
MATERIAL		FINISH	
-		-	
DWN	R. BROWN	15MAR05	TE Connectivity
CHK	M. SARVER	15MAR05	
AP'D	M. SARVER	15MAR05	
PRODUCT SPEC		NAME	
APPLICATION SPEC		DIP SWITCH GDH SERIES	
WEIGHT		SIZE	RESTRICTED TO
-		A2	-
CUSTOMER DRAWING		QAGE CODE	DRAWING NO
		00779	1571983
		SCALE	8:1
		SHEET	2 of 2
		REV	C6

A

B

C

D

3

2

1

Looking for pricing, stock, or lifecycle information?

Click below to explore more details on WIN SOURCE:

- [View 1571983-4 on WIN SOURCE](#)
- [TE Connectivity Information](#)

Optimize Your Supply Chain with WIN SOURCE Solutions

- ✓ Global Sourcing Solution
- ✓ Obsolete Management
- ✓ Cost Control Management
- ✓ Shortage Management
- ✓ Alternative Solution
- ✓ Excess Inventory Management