



THE DATASHEET OF LWC19-H25-C

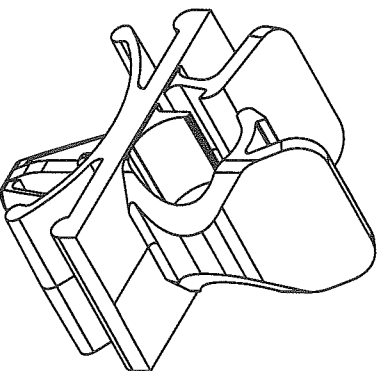
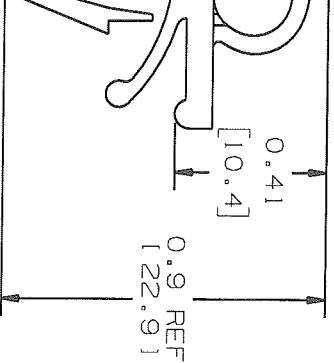


ON A RESTRICTED BASIS AND IS NOT TO BE USED IN ANY WAY DETRIMENTAL TO THE INTERESTS OF PANDUIT CORP.

PANDUIT PART NUMBER*	MAXIMUM CABLE DIA. IN. (mm)	WEIGHT lbs/100 pcs (g)/100 pcs	HOLE SIZE DIA. RANGE	PANEL THK. RANGE
LWC19-H25	0.19 (4.8)	0.33 (150)	3/16"-1/4" (5-6)	0.025-0.105 (0.6-2.7)



NOTES:
1. SEE CURRENT PRICE SHEET FOR PART NUMBER SUFFIX DESIGNATION FOR PACKAGE SIZE.



DIMENSIONS IN BRACKETS ARE METRIC (mm)

CAD FILENAME/LAYERS

G03597G1_DC_GB0239EY/00B

PANDUIT CORP. TINGLEY PARK, ILLINOIS



LWC19-H25
LATCHING WIRE CLIP

INITIAL RELEASE DESCRIPTION	ECN	R	CUST	SUP
PANEL THICKNESS RANGE CONVERSION	GB0239EY	00B	KUN	
AD DIM. TO REF. DIM. UPDATED	GB0239EY	2		
FILE NAME	GB0239EY	1		
ON WAS .19, .86 DIMENSION WAS .85	GB0239EY			







UNLESS OTHERWISE SPECIFIED, DIMENSIONAL TOLERANCES ARE: (.X) ±0.05 (1.3) (.XXX) ±0.010 (0.25) (.XX) ±0.02 (0.5) ANGLES ± 5°		UNLESS OTHERWISE SPECIFIED, ALL DIMENSIONS ARE GIVEN IN INCHES, THIRD ANGLE PROJECTION.	
DRAWN BY CGSM	MAT'L: NYLON 6/6	SCALE 2X	DWG NO. GB0239EY
DATE 2/14/97	CRT'D KUN		DWG SIZE A

Looking for pricing, stock, or lifecycle information?

Click below to explore more details on WIN SOURCE:

-  [View LWC19-H25-C on WIN SOURCE](#)
-  [Panduit Corp Information](#)

Optimize Your Supply Chain with WIN SOURCE Solutions

-  Global Sourcing Solution
-  Obsolete Management
-  Cost Control Management
-  Shortage Management
-  Alternative Solution
-  Excess Inventory Management