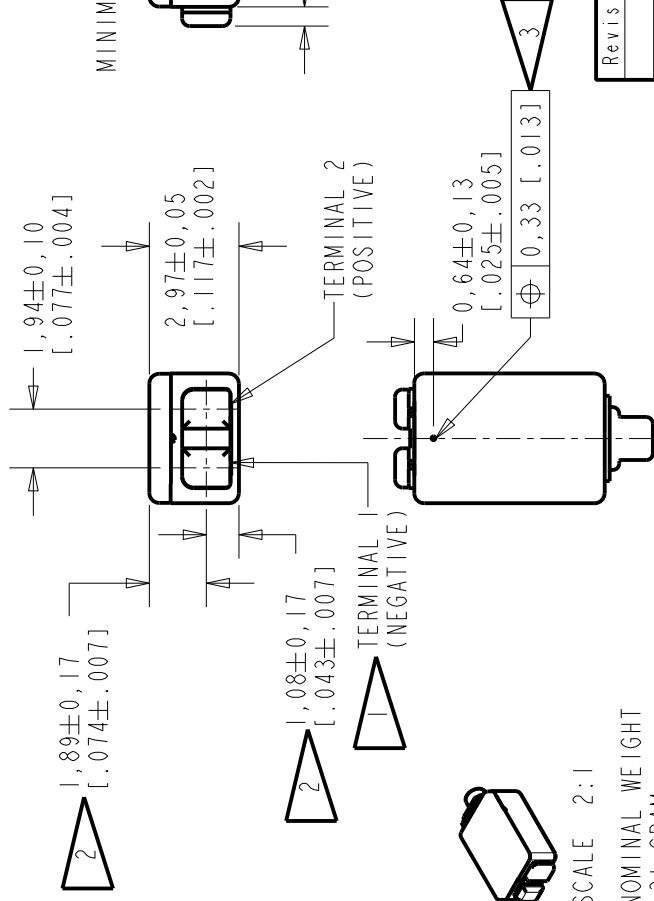
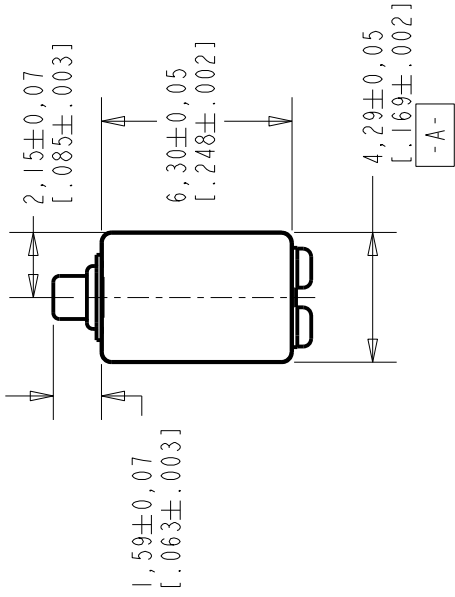




**THE DATASHEET OF
ED-31305-163**





SCALE 2:1

NOMINAL WEIGHT
.31 GRAM

DIMENSIONS IN MILLIMETERS [INCHES]

NOTE:



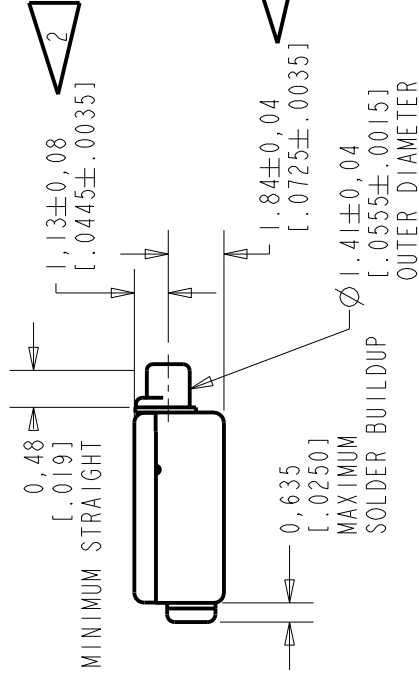
A POSITIVE GOING VOL
RELATIVE TO TERMINAL
IN PRESSURE AT THE S



LOCATED FROM TWO SUR
CONVENIENCE. ONLY A
SURFACE, NOT TO BE U
HORIZONTAL LOCATION
TO ±0,17 [.007].



IT IS IMPORTANT TO K
CLEAR AT ALL TIMES.
WILL CAUSE PERFORMAN



Revision	C.O. #	Implementation Date	RELEASE
A	CI011222TP	3-22-11	Act

SCALE:

4:1

KNOWLES ELECTRONICS
ITASCA, ILLINOIS U.S.A.

DO NOT SCALE DRAWING

RECEIVER

ED-31305-

OUTLINE DRAWING

SHT 1.

KNOWLES ELECTRONICS ITASCA, ILLINOIS U.S.A.

PERFORMANCE SPECIFICATION		TITLE: RECEIVER	
ED-31305-163		SHT 2.1	
DR. BY	DATE	CK. BY	DATE
KL	3-22-11	GJP	3-24-11
APPROVED BY	DATE	APPROVED BY	DATE
GJP	3-24-11	GJP	3-24-11

Revision	C.O. #	Implementation Date	RELEASE LEVEL
A	C10112227P	3-22-11	Active
REVISION			

ELECTRICAL

ISOLATION: CASE WILL BE ELECTRICALLY ISOLATED FROM THE COIL CIRCUIT.

NOMINAL SOURCE VOLTAGE	0.146 V rms, 0mA DC BIAS
DC RESISTANCE	39.2 OHMS ± 10%
IMPEDANCE @ 500 HZ	58.8 OHMS ± 20%
IMPEDANCE @ 1 KHZ	91.8 OHMS ± 20%

TABLE 4

TEST CONDITIONS

NOMINAL SOURCE VOLTAGE	0.146 V rms, 0mA DC BIAS
SOURCE IMPEDANCE	< 1 Ohm
TUBING	TUBLESS, KNOWLES TOOL NUMBER T8688
COUPLER CAVITY	IEC 60318-4(IEC 711)

TABLE 3

FREQUENCY (HZ)	AC DRIVE (V rms)	DC BIAS (mA)	LIMIT (%)
500	0.413	0	10
1000	0.146	0	5
1500	0.146	0	5

TABLE 2

TOTAL HARMONIC DISTORTION
DEVICE WILL NOT EXCEED TOTAL HARMONIC DISTORTION LEVELS LISTED BELOW.

TABLE 5

INPUT VOLTAGE DRIVE SIGNAL	.146V
----------------------------	-------

TABLE 1

FREQUENCY (HZ)	MINIMUM	NOMINAL	MAXIMUM
200	+1.0	+4.0	+7.0
500	-1.5	+1.5	+4.5
1000	-2.0	+06.5	+2.0
2750-3550	+10.0	+13.0	+16.0
5000	-5.0	---	---
6200-7600	-1.5	+1.5	+4.5

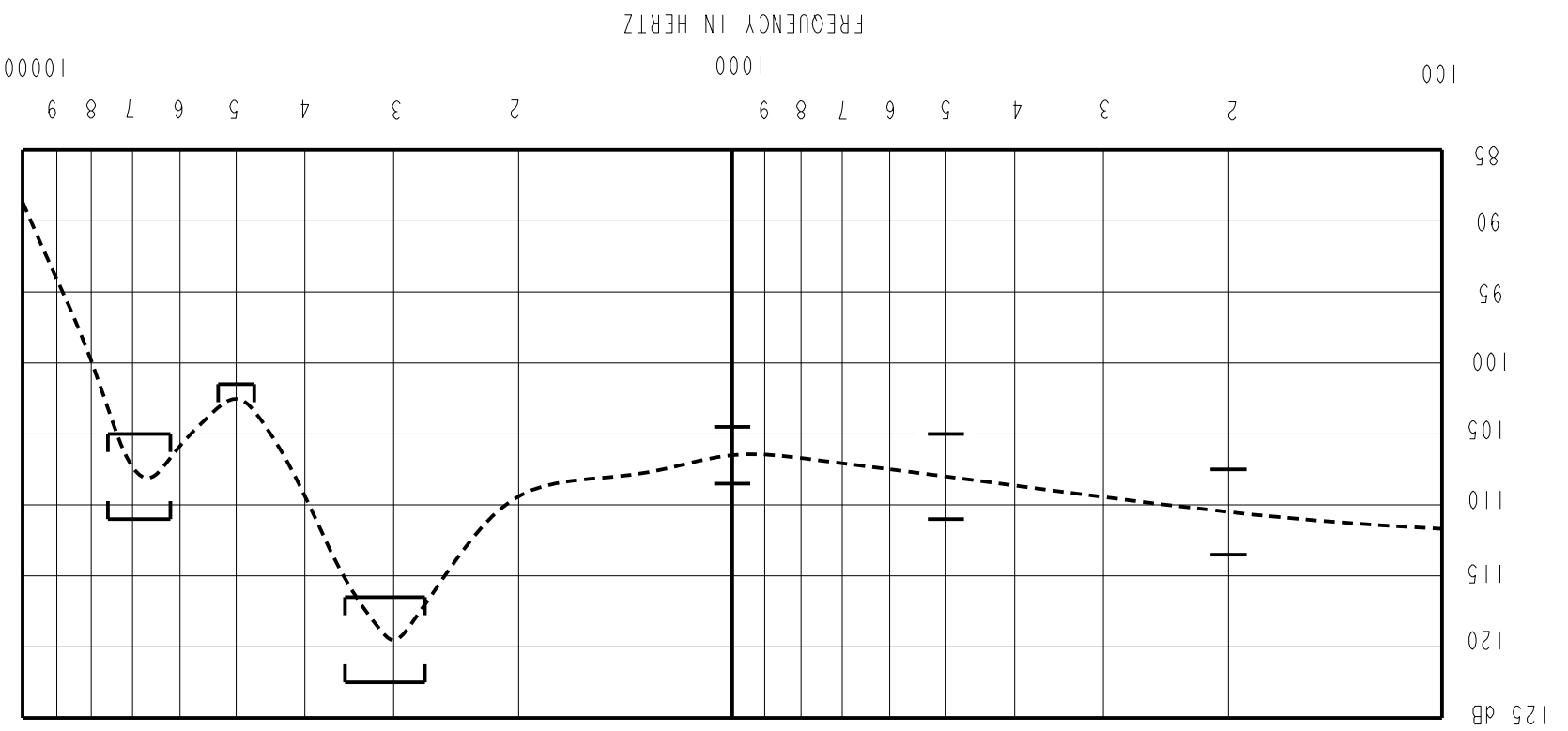
LISTENING TEST CONDUCTED BETWEEN 50HZ TO 5KHZ TO DETECT BUZZ.

BUZZ TEST

PORT LOCATION: 12N

ACOUSTICAL

SENSITIVITY
DEVICE WILL PRODUCE THE SPL LISTED BELOW UNDER TEST CONDITIONS DESCRIBED IN TABLE 3.
NOMINAL SENSITIVITY AT 1KHZ IS DB RELATIVE TO 20µPa. ALL OTHER VALUES
IN DB RELATIVE TO THE SENSITIVITY AT 1KHZ. TEST DATA MEASURED WITH VENT OPEN.



SENSITIVITY IN DB RELATIVE TO 20µPa FOR
CONDITIONS SHOWN BELOW

DESCRIPTION
THE ED-31305-163 IS A RESISTIVE VENTED RECEIVER WITH CUSTOMIZED TESTING.

NO DAMPING

ED-31305-163
SHEET 2.1

Looking for pricing, stock, or lifecycle information?

Click below to explore more details on WIN SOURCE:

 [View ED-31305-163](#) on WIN SOURCE

 [Knowles](#) Information

Optimize Your Supply Chain with WIN SOURCE Solutions

-  Global Sourcing Solution
-  Obsolete Management
-  Cost Control Management
-  Shortage Management
-  Alternative Solution
-  Excess Inventory Management