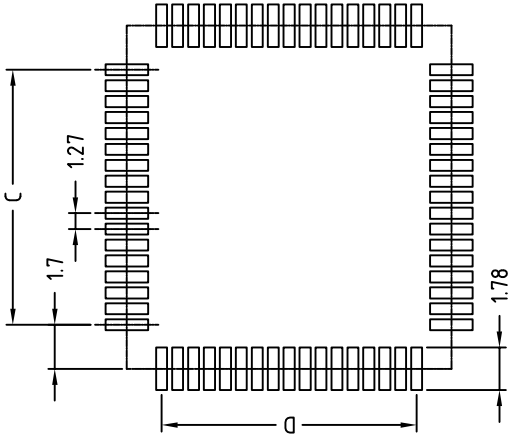
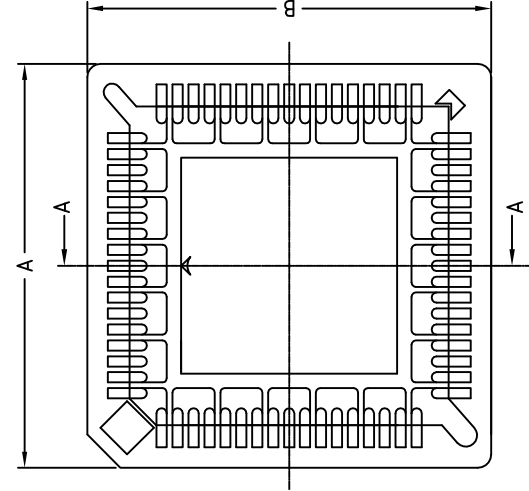
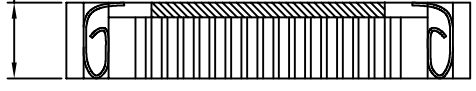


1 2 3 4 5

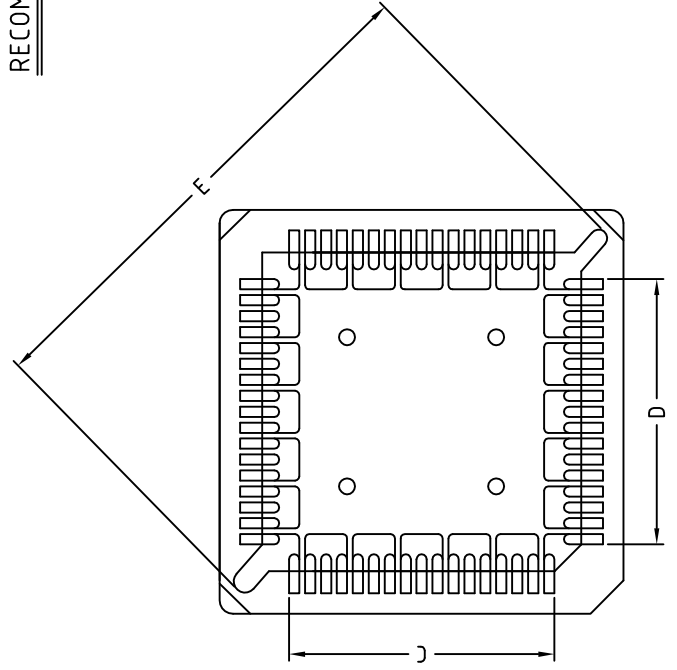


4.50±0.15



SECTION A-A

RECOMMENDED P.C.B. PAD LAYOUT



NO. OF CONTACT	A±0.3	B±0.3
20	15.24	15.24
28	17.78	17.78
52	25.74	25.74
68	30.82	30.82
84	35.90	35.90

Insulator Material: PPS&4.0% Glass Fib
 Contact Resistance: 30MO Max. at DC 1
 Insulator Resistance: 1000MO Min at DC 1
 Current Rating: 1AMP
 Dielectric withstanding voltage: AC 500
 Temperature Rating: -55°C ~ +105°C
 Contact Material: Phosphor Bronze
 RoHS Compliant

OSI ON-SHOR

PLCC Socket - 1.27mm pitch, SMT, non

TITLE	DESIGNED	DRAWN
ED0-XXPLCZ-SM-N	Helen	Helen
APPROVED	Helen	Helen
2012.05.22	2012.05.22	2012.05.22

THESE DRAWINGS AND SPECIFICATIONS ARE THE PROPERTY OF ON-SHORE TECHNOLOGY, INC. AND SHALL NOT BE REPRODUCED, COPIED OR USED IN ANY MANNER WITHOUT THE PRIOR WRITTEN CONSENT OF ON-SHORE TECHNOLOGY, INC.

1 2 3 4 5

Looking for pricing, stock, or lifecycle information?

Click below to explore more details on WIN SOURCE:

- ⊖ [View ED020PLCZ-SM-N on WIN SOURCE](#)
- ⊖ [On Shore Technology Inc. Information](#)

Optimize Your Supply Chain with WIN SOURCE Solutions

- ✓ Global Sourcing Solution
- ✓ Obsolete Management
- ✓ Cost Control Management
- ✓ Shortage Management
- ✓ Alternative Solution
- ✓ Excess Inventory Management