



**THE DATASHEET OF  
HSCH-2A-D2(P)(03)**

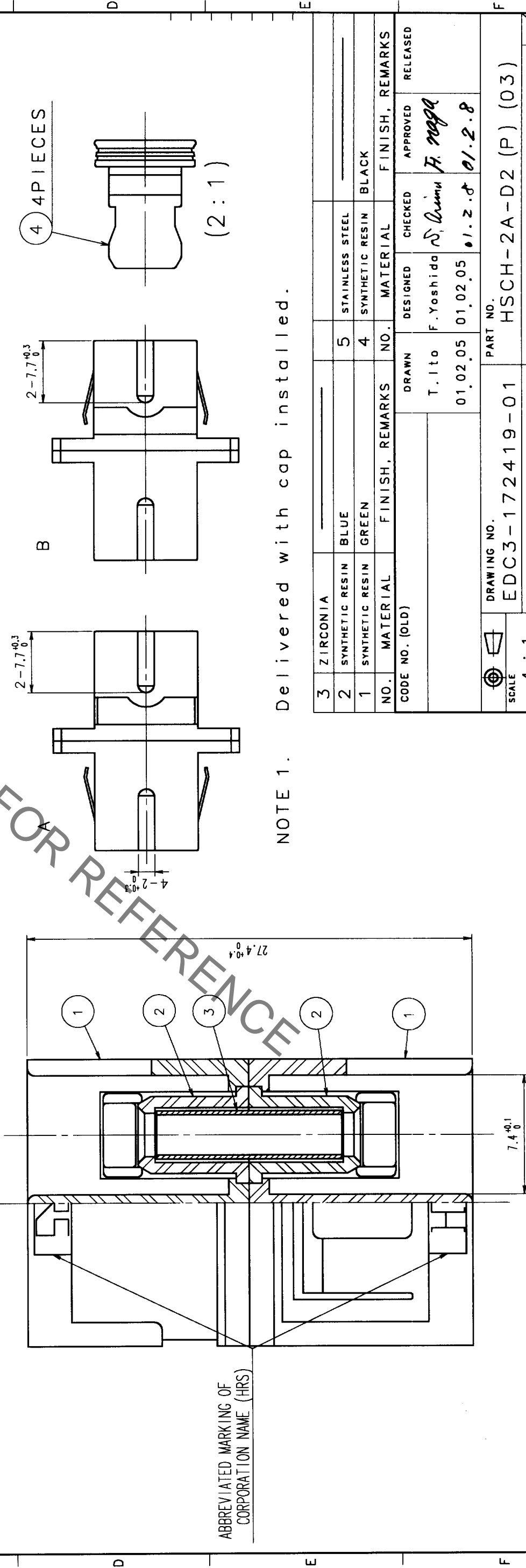
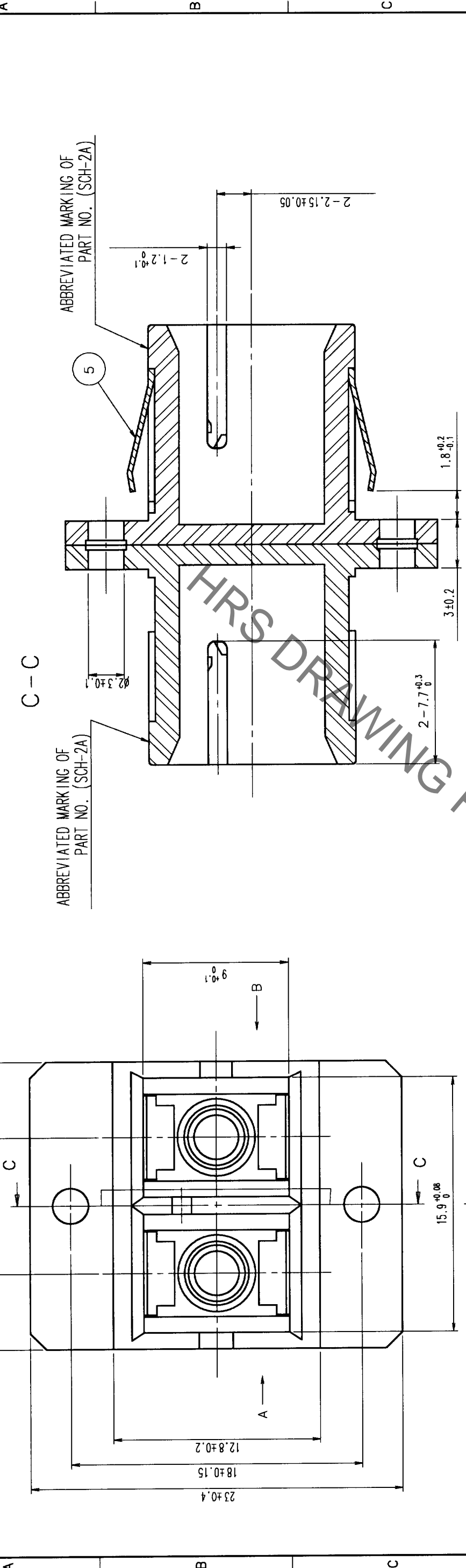


In case of consideration for using Automotive equipment / device which demand high reliability, kindly contact our sales window correspondents.

Aug.1.2019 Copyright 2019 HIROSE ELECTRIC CO., LTD. All Rights Reserved.

COUNT	DESCRIPTION OF REVISIONS	BY	CHKD	DATE	COUNT	DESCRIPTION OF REVISIONS	BY	CHKD	DATE

COUNT	DESCRIPTION OF REVISIONS	BY	CHKD	DATE



TO				
----	--	--	--	--

NO.	MATERIAL	FINISH	REMARKS	NO.	MATERIAL	FINISH	REMARKS
3	ZIRCONIA			5	STAINLESS STEEL		
2	SYNTHETIC RESIN	BLUE		4	SYNTHETIC RESIN	BLACK	
1	SYNTHETIC RESIN	GREEN					

CODE NO. (OLD)	DESIGNED	CHECKED	APPROVED	RELEASED
	T. Ito	S. Arima	F. Nagai	
	01.02.05	01.02.05	01.2.8	

DRAWING NO.	PART NO.
EDC3-172419-01	HSCH-2A-D2 (P) (03)

SCALE	UNITS	CODE NO.
4 : 1	mm	CL704-2108-0-03

## Looking for pricing, stock, or lifecycle information?

Click below to explore more details on WIN SOURCE:

[View HSCH-2A-D2\(P\)\(03\) on WIN SOURCE](#)

[Hirose Electric Co Ltd Information](#)

## Optimize Your Supply Chain with WIN SOURCE Solutions

- ✓ Global Sourcing Solution
- ✓ Obsolete Management
- ✓ Cost Control Management
- ✓ Shortage Management
- ✓ Alternative Solution
- ✓ Excess Inventory Management