



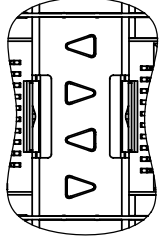
**THE DATASHEET OF
U86-D2627-10121**



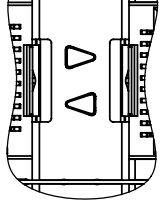
1 2 3 4 5



REV	DES	DATE
D	PH	
E	PART NUMBER	



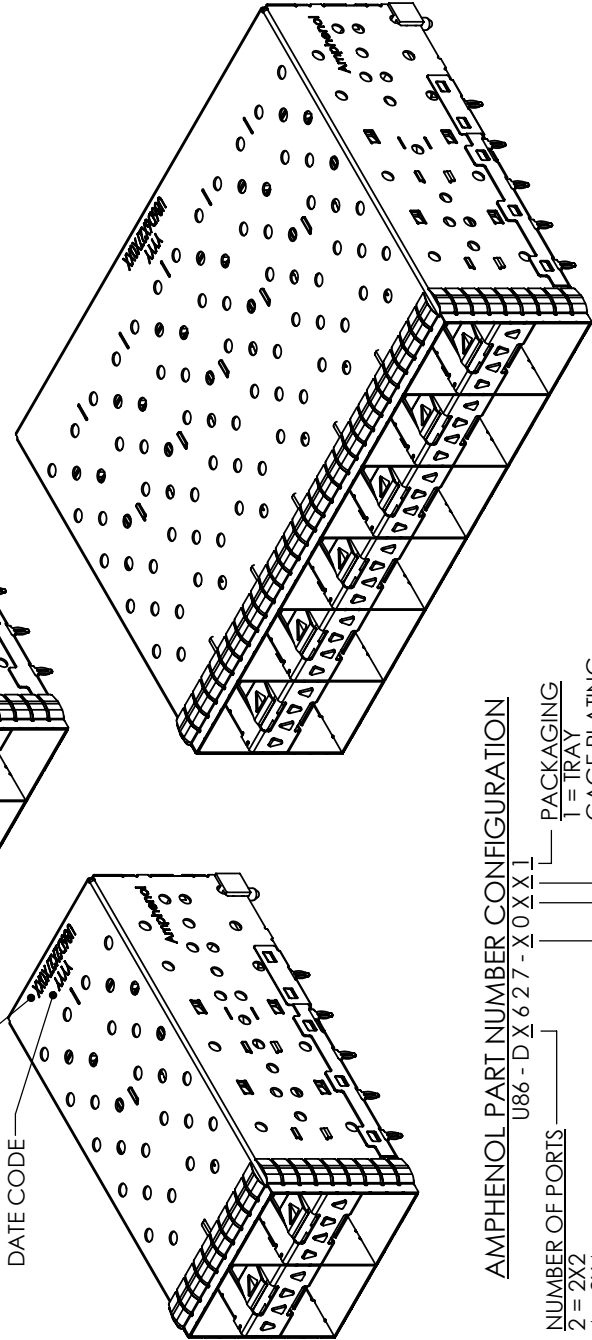
U86-DX627-10XX1
4 LIGHT PIPES PER 2X1



U86-DX627-20XX
2 INNER LIGHT PIPE
PER 2X1

PART NUMBER
(LAST DIGIT INDICATING
PACKAGING TYPE, NOT
PRINTED ON THE PART)

DATE CODE



AMPHENOL PART NUMBER CONFIGURATION

U86 - D X 6 2 7 - X 0 X X 1

- NUMBER OF PORTS
- 2 = 2X2
 - 4 = 2X4
 - 6 = 2X6

LIGHT PIPE CONFIGURATION

- 1 = 4 LIGHT PIPES PER 2X1
- 2 = 2 INNER LIGHT PIPES PER 2X1
- 3 = 2 OUTER LIGHT PIPES PER 2X1

PACKAGING

- 1 = TRAY
- CAGE PLATING
- 2 = NICKEL

PRESS FIT CONNECTOR PLATING

- 1 = 0.76 µm MIN. GOLD ON MATING AREA
- 3.81-7.62 µm TIN/LEAD ON TERMINATION
- 4 = 0.38 µm MIN. GOLD ON MATING AREA
- 3.81-7.62 µm TIN/LEAD ON TERMINATION

- MATERIAL: (
- CAGE - PRE
- COPPER
- PLATING: (
- SEE AMP
- CONFIG
- CONNECTO
- PLASTIC HO
- LCP, FLA
- CONTACTS:
- PHOSPHO
- PLATING
- LIGHT PIPE:
- CLEAR P
- RATING
- PACKAGING
- TRAY PA
- TEMPERATUR
- 40°C TO

UNLESS OTHERWISE SPECIFIED
DIMENSIONS ARE IN MILLIMETERS
TOLERANCES ARE:

- DECIMALS
- X.X ± 0.25
- ANGLES
- ± 1°
- XX ± 0.15

MATERIAL AND FINISH

N/A

REF.

X

CODE IDENT. NO.

03554

APPROVALS

DRAWN H.SONG

DESIGNED J.SI

CHECKED

QA APPD

IE APPD

DWG APPD

DATE

AUG27/09

FEB23/09

X

X

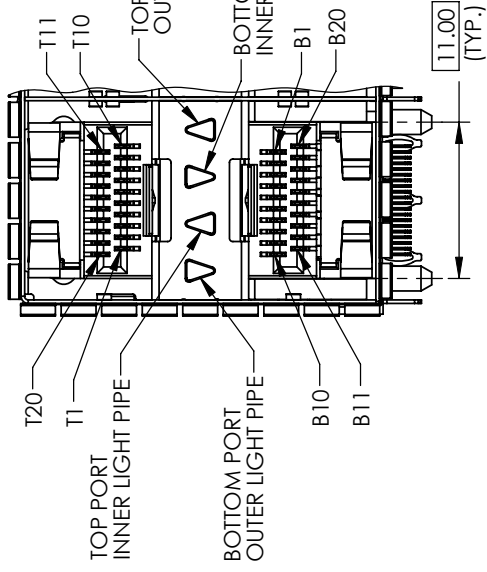
X

DO NOT SCALE DRAWING

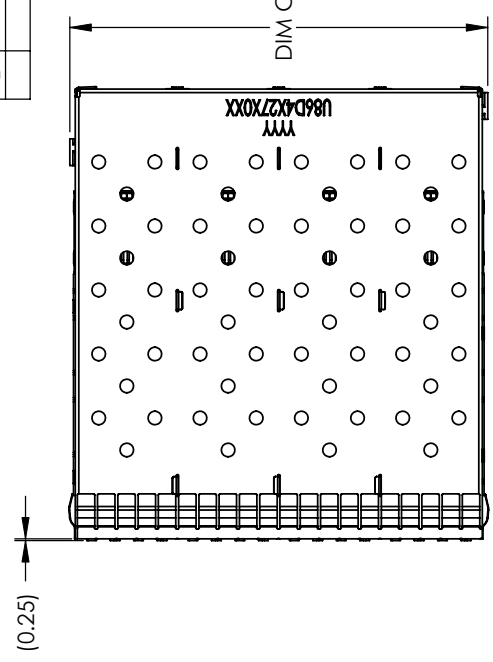
THIS DOCUMENT CONTAINS PROPRIETARY INFORMATION AND SUCH INFORMATION MAY NOT BE DISCLOSED TO OTHERS FOR ANY PURPOSE OR USED FOR MANUFACTURING PURPOSES WITHOUT PERMISSION FROM AMPHENOL CANADA CORP.

1 2 3

1 2 3 4 5

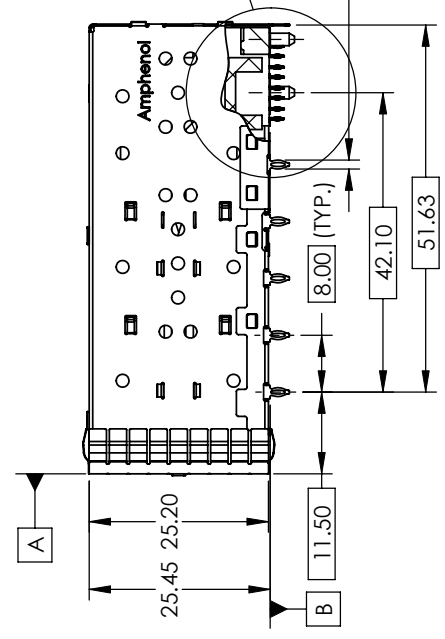
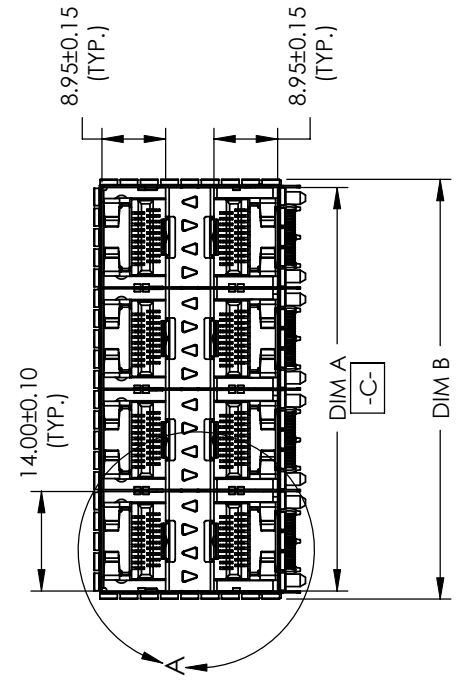


DETAIL A
SCALE 2:1



SFPC
2X2
2X4
2X6

REV	DE	PH	PART NUMBER
D			
E			



UNLESS OTHERWISE SPECIFIED DIMENSIONS ARE IN MILLIMETERS TOLERANCES ARE:

DECIMALS	ANGLES
X.X ± 0.25	± 1°
X.XX ± 0.15	

MATERIAL AND FINISH

N/A
REF. X

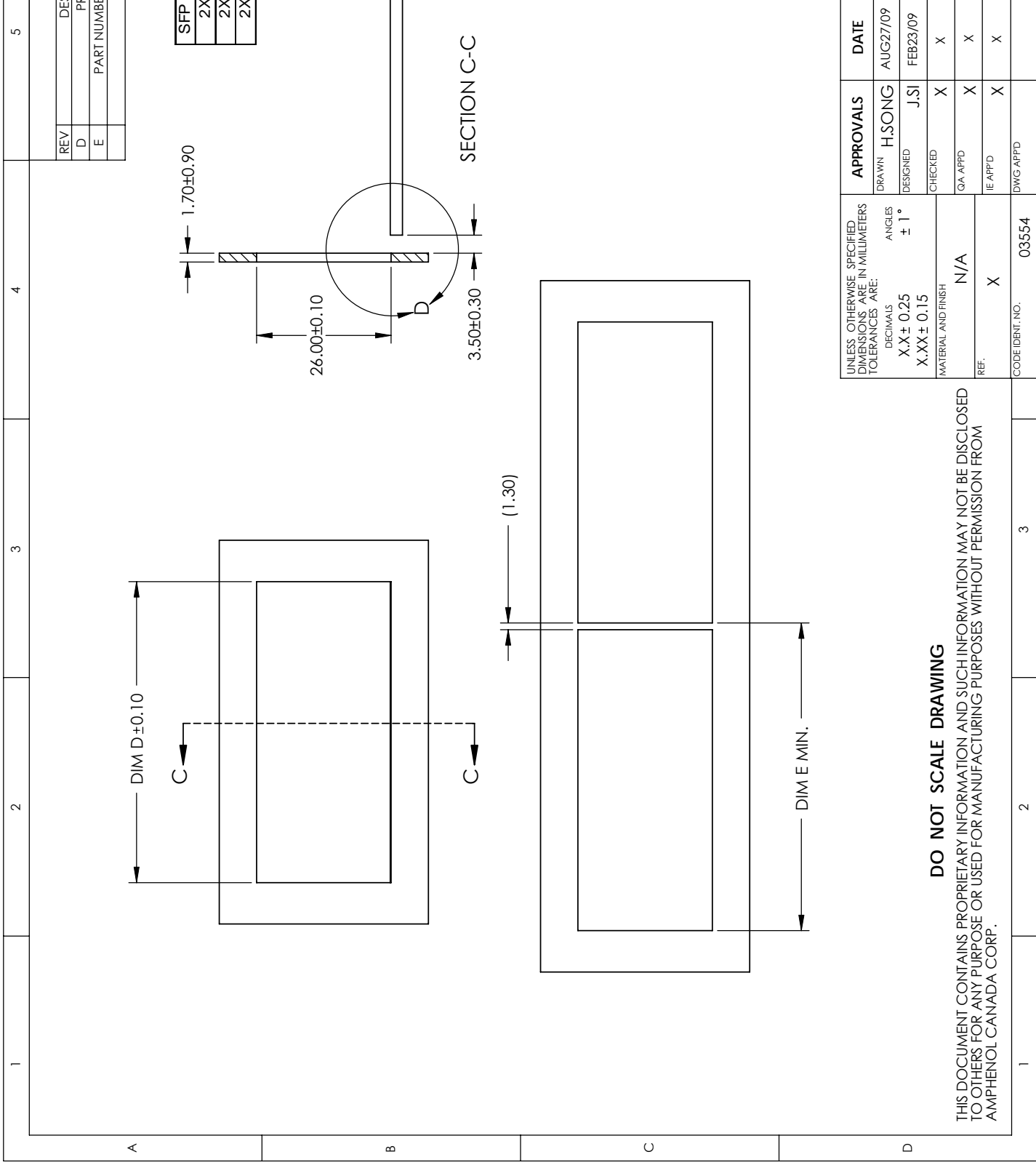
CODE IDENT. NO. 03554

APPROVALS	DATE
DRAWN H. SONG	AUG27/09
DESIGNED J.SI	FEB23/09
CHECKED X	X
QA APPD X	X
IE APPD X	X
DWG APPD	

DO NOT SCALE DRAWING

THIS DOCUMENT CONTAINS PROPRIETARY INFORMATION AND SUCH INFORMATION MAY NOT BE DISCLOSED TO OTHERS FOR ANY PURPOSE OR USED FOR MANUFACTURING PURPOSES WITHOUT PERMISSION FROM AMPHENOL CANADA CORP.

1 2 3

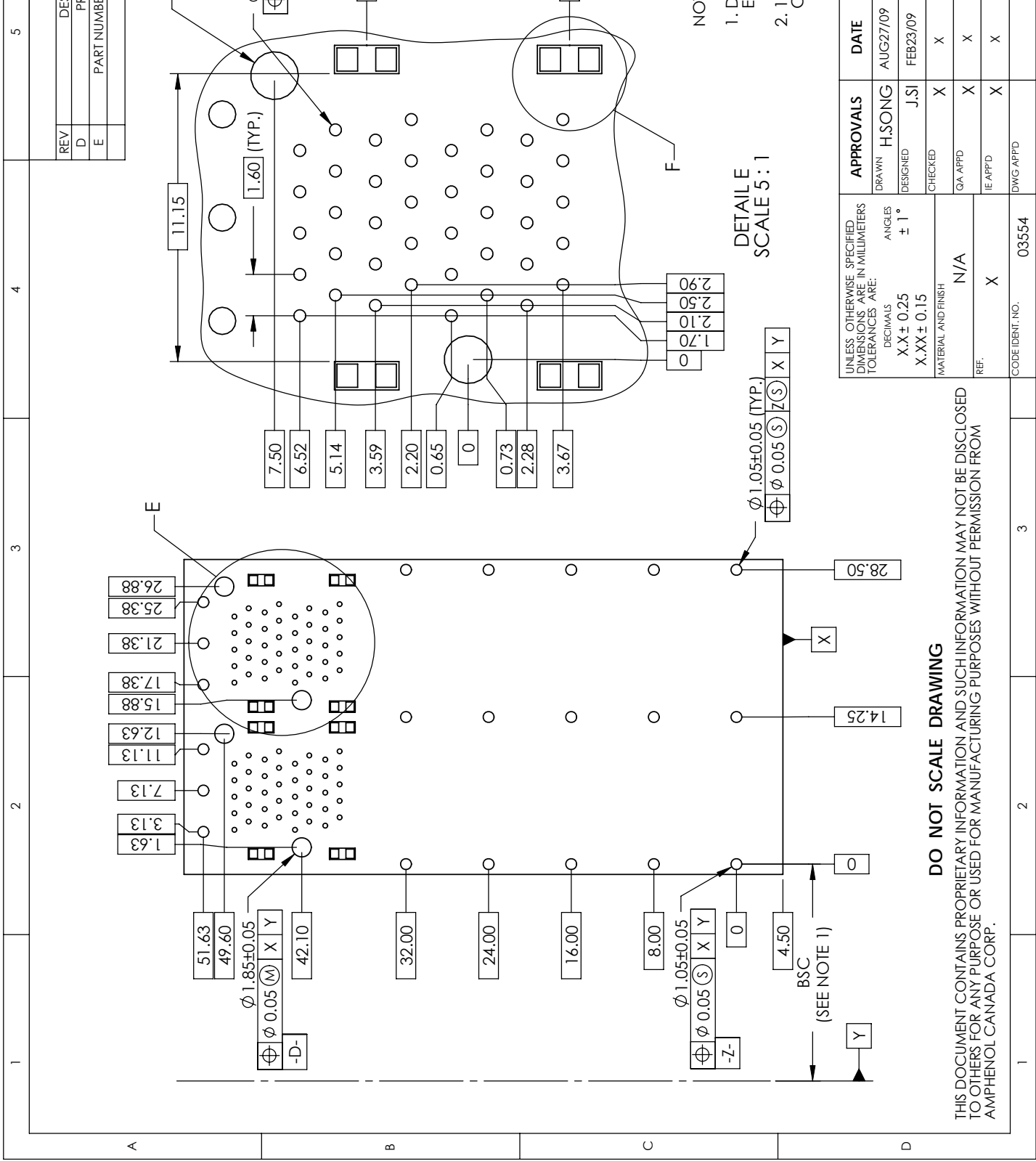


REV	DE
D	PI
E	PART NUMBER

SFP
2X
2X
2X

UNLESS OTHERWISE SPECIFIED DIMENSIONS ARE IN MILLIMETERS TOLERANCES ARE:		APPROVALS	DATE
DECIMALS	X.X ± 0.25	DRAWN H. SONG	AUG27/09
ANGLES	± 1°	DESIGNED J.SI	FEB23/09
	X.XX ± 0.15	CHECKED	X
MATERIAL AND FINISH	N/A	QA APPD	X
REF.	X	IE APPD	X
CODE IDENT. NO.	03554	DWG APPD	X

DO NOT SCALE DRAWING
 THIS DOCUMENT CONTAINS PROPRIETARY INFORMATION AND SUCH INFORMATION MAY NOT BE DISCLOSED TO OTHERS FOR ANY PURPOSE OR USED FOR MANUFACTURING PURPOSES WITHOUT PERMISSION FROM AMPHENOL CANADA CORP.



DO NOT SCALE DRAWING
 THIS DOCUMENT CONTAINS PROPRIETARY INFORMATION AND SUCH INFORMATION MAY NOT BE DISCLOSED TO OTHERS FOR ANY PURPOSE OR USED FOR MANUFACTURING PURPOSES WITHOUT PERMISSION FROM AMPHENOL CANADA CORP.

UNLESS OTHERWISE SPECIFIED DIMENSIONS ARE IN MILLIMETERS TOLERANCES ARE:	APPROVALS	DATE
DECIMALS	DRAWN H. SONG	AUG27/09
ANGLES	DESIGNED J.SI	FEB23/09
X.X ± 0.25	CHECKED	X
X.XX ± 0.15	QA APPD	X
MATERIAL AND FINISH	IE APPD	X
N/A	DWG APPD	
REF. X		
CODE IDENT. NO. 03554		

NO
 1. D
 E
 2. 1
 C

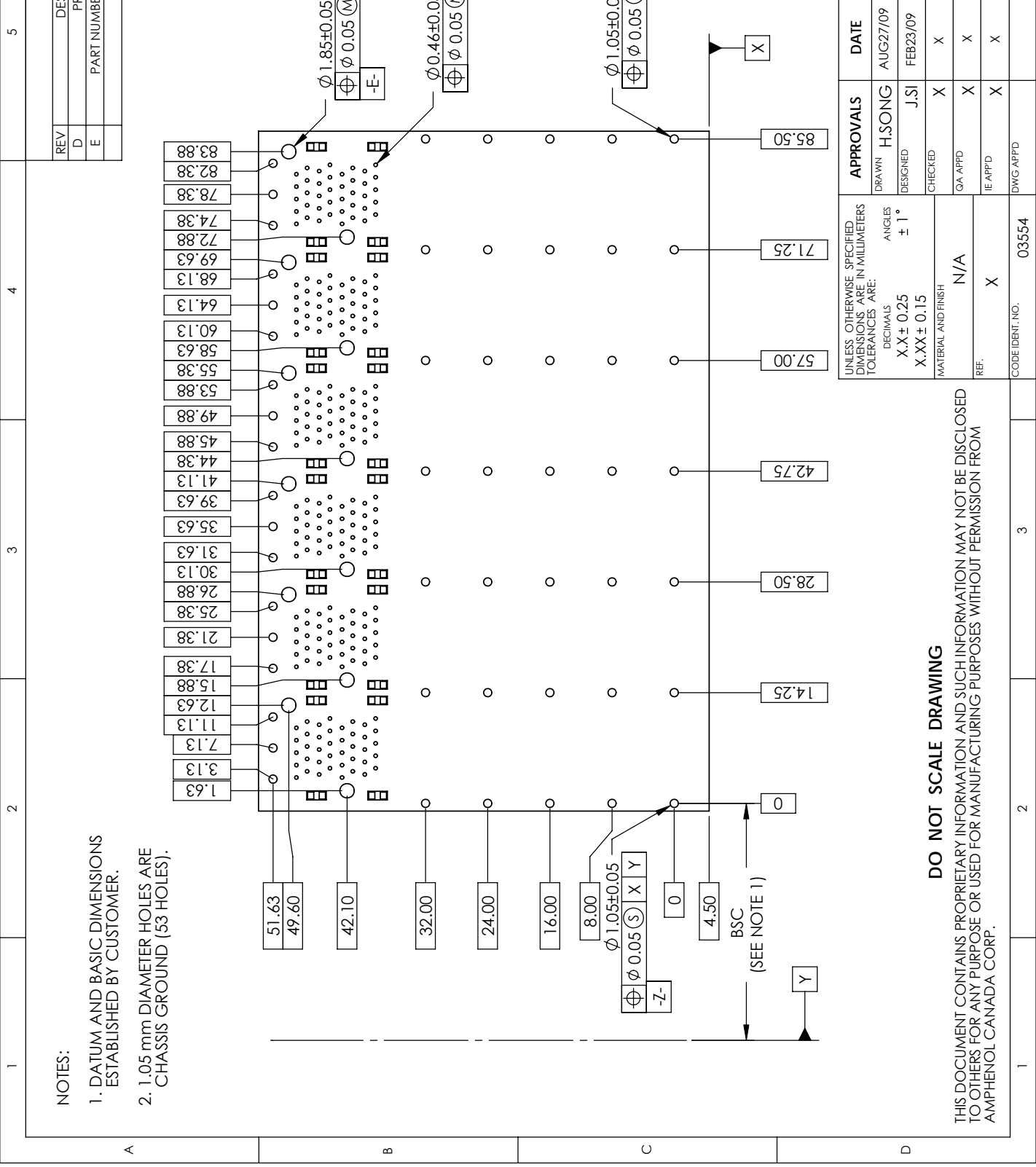
DETAIL E
 SCALE 5:1

REV	DE
D	PT
E	PART NUMBER

1 2 3 4 5



A B C D

1 2 3



Looking for pricing, stock, or lifecycle information?

Click below to explore more details on WIN SOURCE:

-  [View U86-D2627-10121 on WIN SOURCE](#)
-  [Amphenol Commercial Products Information](#)

Optimize Your Supply Chain with WIN SOURCE Solutions

-  Global Sourcing Solution
-  Obsolete Management
-  Cost Control Management
-  Shortage Management
-  Alternative Solution
-  Excess Inventory Management