



**THE DATASHEET OF
CXA-P1212-VJL**



Connector type, Dimming, 7W, For 2 bulbs

TDK DC-AC Inverter

CXA-P1212-VJL

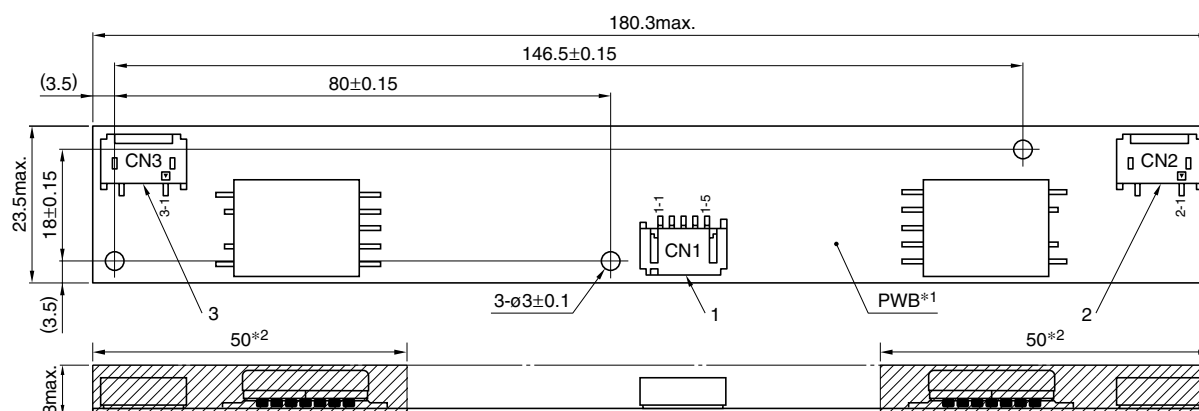
FEATURES

- The CXA-P1212-VJL is an inverter for cold cathode fluorescent lamps and features a built-in dimmer.
- Because they employ advanced output current control, fluctuations in input voltage, load, and distributed capacitance have virtually no effect on brightness.
- Output open and short circuit conditions result in no damage, heat generation, or other difficulties.
- Safe design that includes a built-in overcurrent protection element.
- Insulation is simplified due to flat backside surface of board.
- The high-voltage terminal is coated with silicone so as to reduce a possibility of an occurrence of a defect caused by dust.

TEMPERATURE AND HUMIDITY RANGES

Temperature range (°C)	Operating	0 to +70
	Storage	-30 to +85
Humidity range(%)RH	95max. [Maximum wet-bulb temperature 38°C]	

SHAPES AND DIMENSIONS



*1 Substrate (PWB: Printed wiring board): Noncombustible material UL94V-0 (FR-4 or CEM-3) $t=1\text{mm}$

*2 High-voltage generator (The entire surface within a range of 50mm away from the end of the base in the output)

Weight: 21g typ.

Dimensions in mm

	Connector manufacturer's company and type	Symbol
1 Input connector	Japan Solderless Terminal Co., Ltd. S5B-PH-SM3	CN1
2 Output connector	Japan Solderless Terminal Co., Ltd. SM02(8.0)B-BHS-1	CN2
3 Output connector	Japan Solderless Terminal Co., Ltd. SM02(8.0)B-BHS-1	CN3

TERMINAL NUMBERS AND FUNCTIONS

CN1

Terminal No.	Functions	Symbol
CN1-1	Input voltage Edc: 9.6 to 14.4V 12V[nom.]	Vin
CN1-2	0V	GND
CN1-3	Brightness dimmer voltage Edc: 0 to 3.4V (Maximum brightness on 0V)	Vbr
CN1-4	Used in the internal circuits, do not connect.	N.C.
CN1-5	Remote voltage Edc 0V: off/5 to 7V:on	Vrmt

CN2

Terminal No.	Functions	Symbol
CN2-1	Output 1[High voltage] Irms 2 to 6mA	V _{HIGH1}
CN2-2	—	N.C.
CN2-3	Output 1[Low voltage] (2V)	V _{LOW1}

CN3

Terminal No.	Functions	Symbol
CN3-1	Output 2[High voltage] Irms 2 to 6mA	V _{HIGH2}
CN3-2	—	N.C.
CN3-3	Output 2[Low voltage] (2V)	V _{LOW2}

All specifications are subject to change without notice.

Connector type, Dimming, 7W, For 2 bulbs

TDK DC-AC Inverter

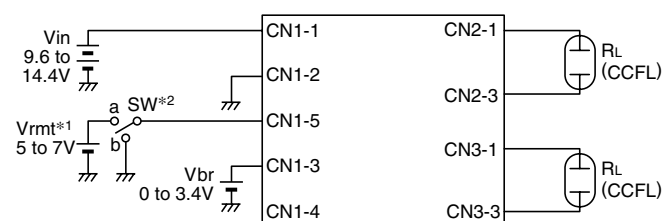
CXA-P1212-VJL

ELECTRICAL CHARACTERISTICS

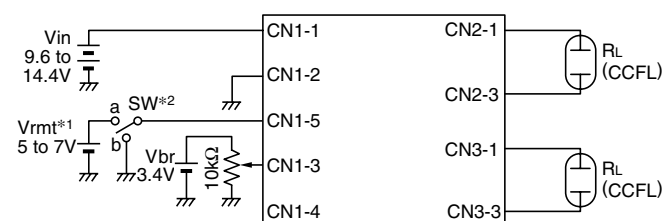
Items	Unit	Symbol	Specifications			Conditions				Brightness
			min.	typ.	max.	Vin(V)	Vbright(V)	Ta(°C)	RL(kΩ)	
Output current Irms	mA	lout1	5.3	6	6.7	12±2.4	0	0 to +70	76 to 114	Maximum
		lout2	5.3	6	6.7	12±2.4	0	0 to +70	76 to 114	Maximum
		lout1	5.5	6	6.5	12±1.2	0	0 to +70	95	Maximum
		lout2	5.5	6	6.5	12±1.2	0	0 to +70	95	Maximum
		lout1	1.7	2	2.4	12±1.2	3.4	0 to +70	250	Minimum
		lout2	1.7	2	2.4	12±1.2	3.4	0 to +70	250	Minimum
Input current Idc	A	Iin	—	0.76	1.3	12±2.4	0 to 3.4	0 to +70	76 to 114	
Oscillation frequency	kHz	FL	52	58	64	12±2.4	0	0 to +70	95	
Open circuit output voltage Erms	V	Vopen	1400	1500	2000	12±2.4	0 to 3.4	0 to +70	∞	

TYPICAL CONNECTIONS

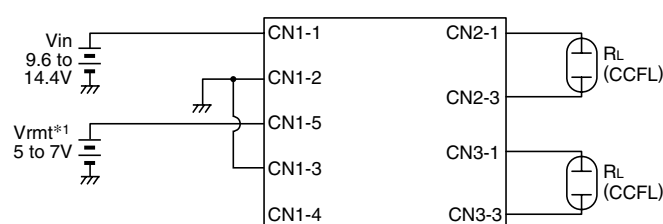
EXAMPLE OF VOLTAGE DIMMER CONTROL



EXAMPLE OF POTENTIOMETER DIMMER CONTROL



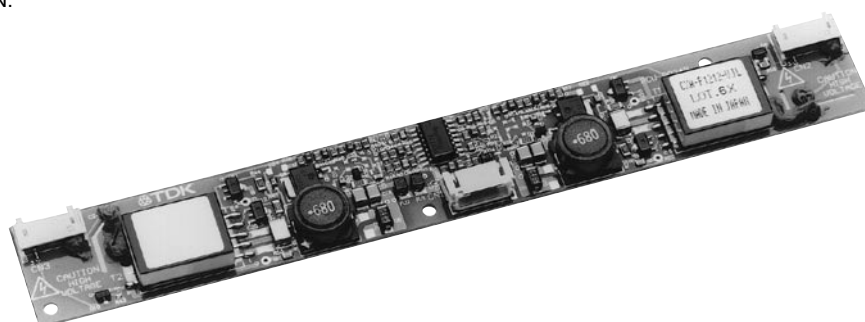
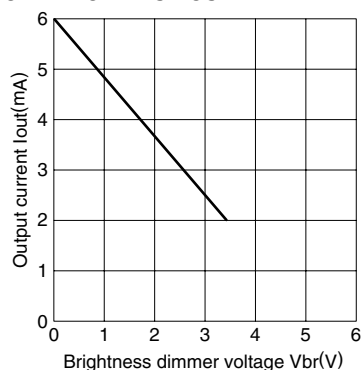
NO DIMMER CONTROL



*1 Vrm1 (remote voltage) shall be ON after Vin was ON.



*2 SW a: on, b:off

BRIGHTNESS DIMMER VOLTAGE - OUTPUT CURRENT CHARACTERISTICS



Looking for pricing, stock, or lifecycle information?

Click below to explore more details on WIN SOURCE:

-  [View CXA-P1212-VJL on WIN SOURCE](#)
-  [TDK Corporation Information](#)

Optimize Your Supply Chain with WIN SOURCE Solutions

-  Global Sourcing Solution
-  Obsolete Management
-  Cost Control Management
-  Shortage Management
-  Alternative Solution
-  Excess Inventory Management