



**THE DATASHEET OF  
NCN51206GEVB**



## KNX Reference Design Evaluation Board User's Manual



ON Semiconductor®

<http://onsemi.com>

### EVAl BOARD USER'S MANUAL

#### Introduction

The NCN5120 Reference Design mimics a switch application suitable for use in KNX twisted pair networks (KNX TP1–256). Only 2 wires are needed for communication and power. It contains the NCN5120 KNX Transceiver which handles the transmission and reception of data on the bus. It will also generate all necessary voltages to power the board and external loads.

The Reference Design contains a microcontroller with debug interface for custom firmware development. Up to 4 external switches can be monitored and up to 4 external loads can be controlled. A voltage between 3.3 V and 21 V is available to drive the external loads.

The NCN5120 Reference Design assures safe coupling to and decoupling from the KNX bus. Bus monitoring warns the external microcontroller for loss of power so that critical data can be stored in time.

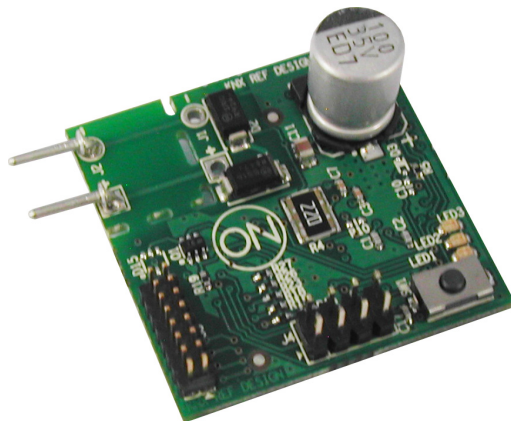


Figure 1. NCN5120 Reference Design

#### Key Features

- 9,600 baud KNX Communication Speed
- Supervision of KNX Bus Voltage
- High Efficient 3.3 V to 21 V Selectable DC–DC Converter to Drive External Loads
- Monitoring of Power Regulators
- No Additional Power Supply Required
- Buffering of Sent Data Frames (Extended Frames Supported)
- Selectable UART or SPI Interface to Host Controller
- Selectable UART and SPI Baud Rate to Host Controller
- Optional CRC on UART to the Host
- Optional MARKER Character to the Host
- Optional Direct Coupling of RxD and TxD to Host (Analog Mode)
- Auto Polling (Optional)
- Temperature Monitoring
- Contains Freely Programmable Microcontroller for Custom Applications
- Monitoring of 4 External Switches
- Controlling of 4 External (High Voltage) Loads (e.g. LED's)
- One Freely Usable Push Button
- 3 Freely Usable LED's
- Operating Temperature Range  $-25^{\circ}\text{C}$  to  $+85^{\circ}\text{C}$

# NCN51206GEVB

## BLOCK DIAGRAM

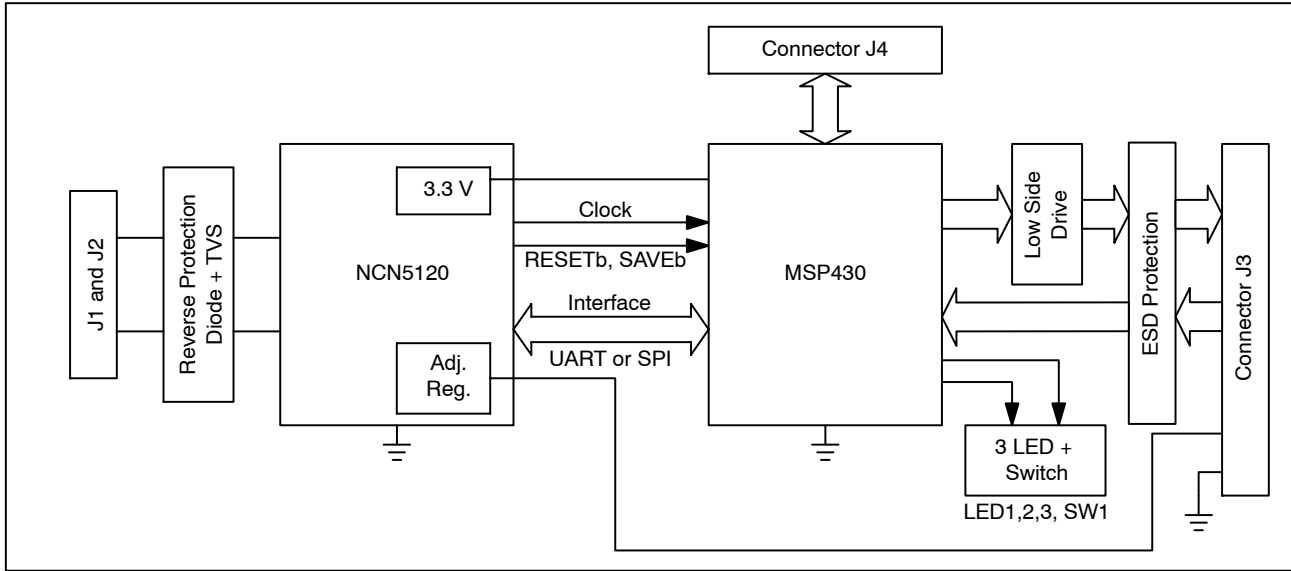


Figure 2. NCN5120 Reference Design Block Diagram

## CONNECTOR DESCRIPTION

Table 1. CONNECTOR LIST AND DESCRIPTION

Connector	Description
J1 and J2	KNX Bus Connection
J3	External Switch Inputs and External Outputs
J4	Microcontroller Debug Interface

## TYPICAL APPLICATION

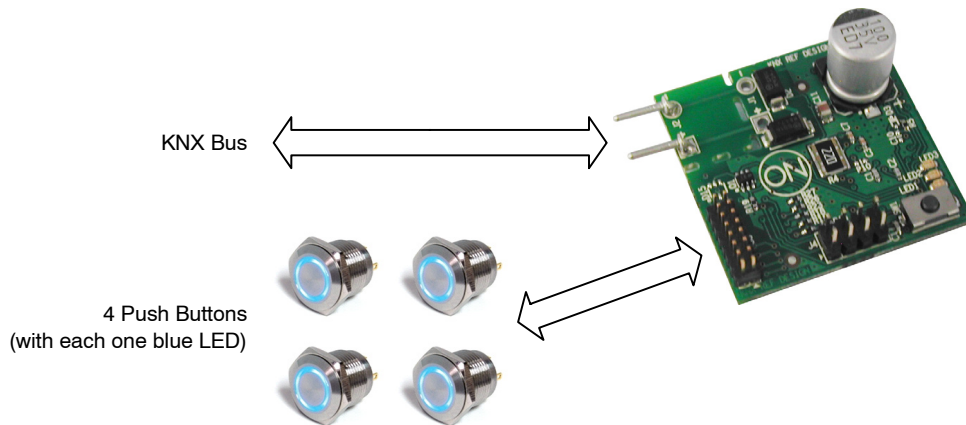


Figure 3. Typical Application

# NCN51206GEVB

## ELECTRICAL SPECIFICATION

### Recommend Operation Conditions

Operating ranges define the limits for functional operation and parametric characteristics of the reference design. Note that the functionality of the reference design

outside these operating ranges is not guaranteed. Operating outside the recommended operating ranges for extended periods of time may affect device reliability.

**Table 2. OPERATING RANGES**

Symbol	Parameter	Min	Max	Unit
V <sub>BUS</sub>	Voltage on Positive Pin of J1 and J2 (Note 1)	+20	+33	V
V <sub>DIG1</sub>	Input Voltage on J4 and J3 (Pins 1, 3, 5 and 7)	0	3.3	V
V <sub>DIG2</sub>	Input Voltage on J3 (Pins 9, 11, 13 and 15) (Note 2)	0	5	V
V <sub>DD2</sub>	Output Voltage on J3 (Pins 10, 12, 14 and 16) (Note 3)	3.3	21	V
T <sub>a</sub>	Ambient Temperature	-25	+85	°C

1. Voltage indicates DC value. With equalization pulse bus voltage must be between 11 V and 45 V
2. Higher voltages are possible. See Adjustable DC-DC Converter page 13 for more details.
3. See Adjustable DC-DC Converter page 13 for the limitations!

**Table 3. DC PARAMETERS**

(The DC parameters are given for a reference design operating within the Recommended Operating Conditions unless otherwise specified.)

Convention: currents flowing in the circuit are defined as positive.

Symbol	Connector	Pin(s)	Parameter	Remark/Test Conditions	Min	Typ	Max	Unit
--------	-----------	--------	-----------	------------------------	-----	-----	-----	------

#### Power Supply

V <sub>BUS</sub>	J1, J2	1	Bus DC Voltage	Excluding Active and Equalization Pulse	20	-	33	V
I <sub>BUS</sub>			Bus Current Consumption	Normal Operating Mode, No External Load, DC1 and DC2 Enabled, Continuous Transmission of '0' on the KNX Bus by another KNX Device	-	5	-	mA
V <sub>BUSH</sub>			Undervoltage Release Level	V <sub>BUS</sub> Rising (Figure 4)	-	18.0	-	V
V <sub>BUSL</sub>			Undervoltage Trigger Level	V <sub>BUS</sub> Falling (Figure 4)	-	16.8	-	V
V <sub>BUS_Hyst</sub>			Undervoltage Hysteresis		0.6	-	-	V

#### KNX Bus Coupler

I <sub>coupler_lim</sub>	J1, J2	1	Bus Coupler Current Limitation	R10 Not Mounted	13	-	30	mA
				R10 Mounted	26	-	60	mA

#### Adjustable DC-DC Converter

V <sub>DD2</sub>	J3	10, 12, 14, 16	Output Voltage	V <sub>BUS</sub> > V <sub>DD2</sub>	3.3	-	21	V
V <sub>DD2H</sub>			Undervoltage Release Level	V <sub>DD2</sub> Rising (Figure 5)	-	0.9 × V <sub>DD2</sub>	-	V
V <sub>DD2L</sub>			Undervoltage Trigger Level	V <sub>DD2</sub> Falling (Figure 5)	-	0.8 × V <sub>DD2</sub>	-	V
V <sub>DD2_rip</sub>			Output Voltage Ripple	V <sub>BUS</sub> = 26 V, V <sub>DD2</sub> = 3.3 V, I <sub>DD2</sub> = 40 mA	-	40	-	mV
I <sub>DD2_lim</sub>			Overcurrent Threshold		-100	-	-200	mA
η <sub>VDD2</sub>			Power Efficiency	V <sub>in</sub> = 26 V, V <sub>DD2</sub> = 3.3 V, I <sub>DD2</sub> = 35 mA	-	90	-	%

# NCN51206GEVB

**Table 3. DC PARAMETERS** (continued)

(The DC parameters are given for a reference design operating within the Recommended Operating Conditions unless otherwise specified.)

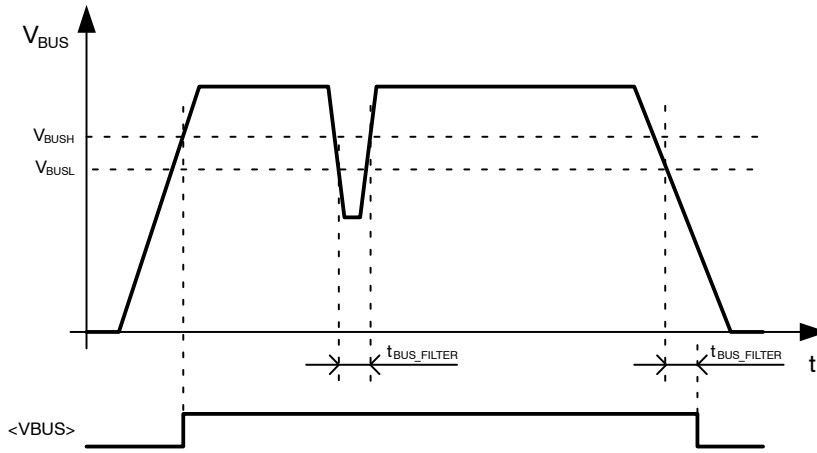
Convention: currents flowing in the circuit are defined as positive.

Symbol	Connector	Pin(s)	Parameter	Remark/Test Conditions	Min	Typ	Max	Unit
<b>Digital Inputs</b>								
V <sub>IL</sub>	J3	1, 3, 5, 7	Logic Low Threshold		0	-	0.7	V
	J4	2, 3, 4, 5, 6, 8						
V <sub>IH</sub>	J3	1, 3, 5, 7	Logic High Threshold		2.65	-	3.3	V
	J4	2, 3, 4, 5, 6, 8						
<b>Digital Outputs</b>								
V <sub>OL</sub>	J4		Logic Low Output Level		0	-	0.6	V
V <sub>OH</sub>	J4		Logic High Output Level		V <sub>DD1</sub> - 0.6	-	V <sub>DD1</sub>	V
V <sub>OL_OD</sub>	J3	9, 11, 13, 15	Logic Low Level Open Drain	I <sub>OL</sub> = 5 mA	-	-	0.4	V

**Table 4. AC PARAMETERS**

(The AC parameters are given for a reference design operating within the Recommended Operating Conditions unless otherwise specified.)

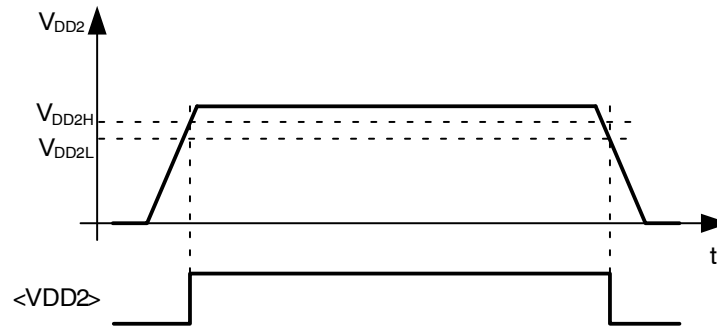
Symbol	Pin(s)	Parameter	Remark/Test Conditions	Min	Typ	Max	Unit
<b>Power Supply</b>							
t <sub>BUS_FILTER</sub>	VBUS1	VBUS1 Filter Time	(Figure 4)	-	2	-	ms
<b>MASTER Serial Peripheral Interface (MASTER SPI)</b>							
t <sub>sck</sub>	SCK	SPI Clock Period	SPI Baudrate Depending on Configuration Input Bits (see Interface Mode page 14). Tolerance is Equal to Xtal Oscillator Tolerance. (Figure 6)	-	2	-	μs
t <sub>SCK_HIGH</sub>		SPI Clock High Time		-	8	-	μs
t <sub>SCK_LOW</sub>		SPI Clock Low Time		-	t <sub>sck</sub> / 2	-	
t <sub>SDI_SET</sub>	SDI	SPI Data Input Setup Time		125	-	-	ns
t <sub>SDI_HOLD</sub>		SPI Data Input Hold Time		125	-	-	ns
t <sub>SDO_VALID</sub>	SDO	SPI Data Output Valid Time		C <sub>L</sub> = 20 pF (Figure 6)	-	-	100
t <sub>CS_HIGH</sub>	CSB	SPI Chip Select High Time	(Figure 6)	0.5 × t <sub>SCK</sub>	-	-	
t <sub>CS_SET</sub>		SPI Chip Select Setup Time	0.5 × t <sub>SCK</sub>	-	-		
t <sub>CS_HOLD</sub>		SPI Chip Select Hold Time	0.5 × t <sub>SCK</sub>	-	-		
t <sub>TREQ_LOW</sub>	TREQ	TREQ Low Time	(Figure 6)	125	-	-	ns
t <sub>TREQ_HIGH</sub>		TREQ High Time	125	-	-	ns	
t <sub>TREQ_SET</sub>		TREQ Setup Time	125	-	-	ns	
t <sub>TREQ_HOLD</sub>		TREQ Hold Time	125	-	-	ns	
<b>Universal Asynchronous Receiver/Transmitter (UART)</b>							
f <sub>UART</sub>	TXD, RXD	UART Interface Baudrate	Baudrate Depending on Configuration Input Pins (see Interface Mode page 14). Tolerance is equal to tolerance of Xtal oscillator tolerance.	-	19,200	-	Baud
				-	38,400	-	Baud



**Comments:**

<V\_BUS> is an internal signal which can be verified with the Internal State Service

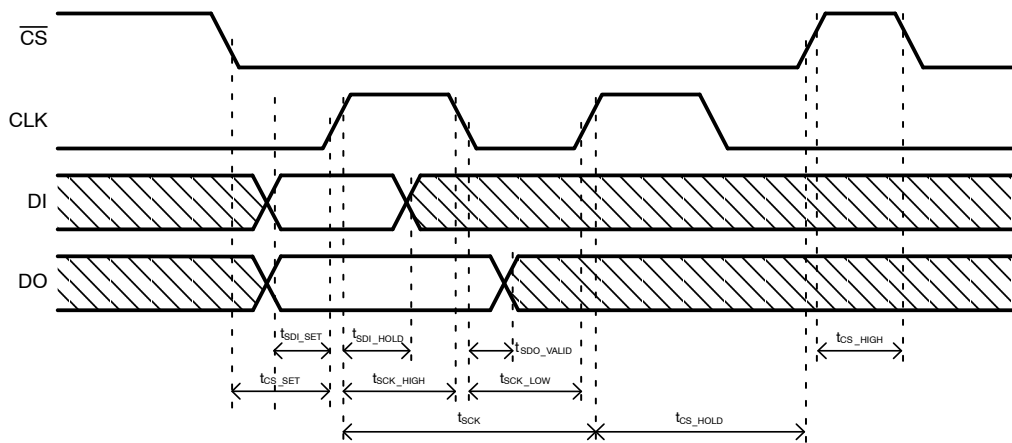
**Figure 4. Bus Voltage Undervoltage Threshold**



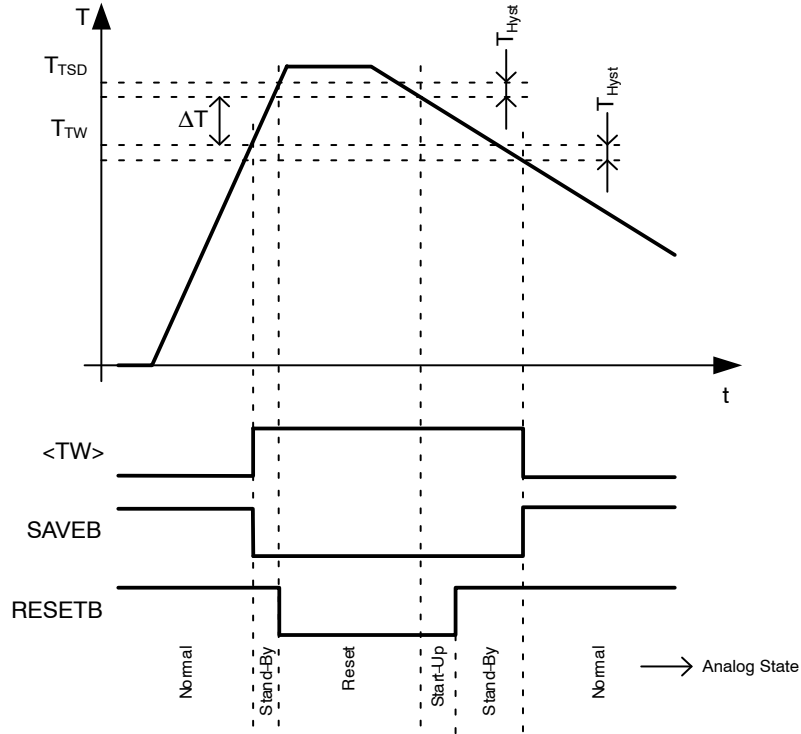
**Comments:**

<V\_DD2> is an internal signal which can be verified with the System State Service.

**Figure 5. VDD2 Undervoltage Threshold**



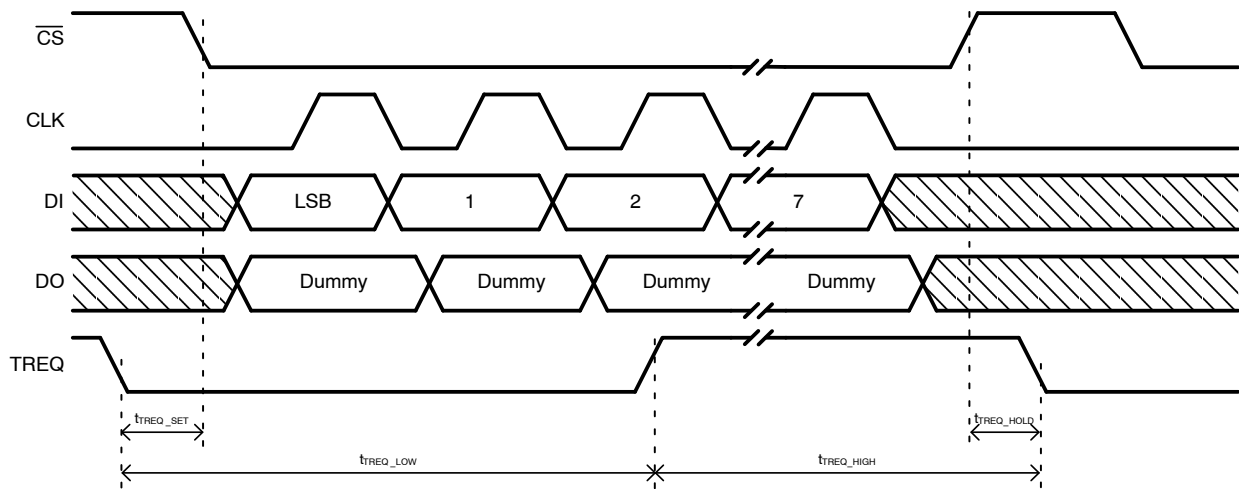
**Figure 6. SPI Bus Timing Diagram**



**Comments :**

- $\langle TW \rangle$  is an internal signal which can be verified with the System State Service.
- No SPI/ UART communication possible when RESETB is low!
- It's assumed all voltage supplies are within their operating condition.

**Figure 7. Temperature Monitoring Levels**



**Figure 8. TREQ Timing Diagram**

# NCN51206GEVB

## APPLICATION SCHEMATIC

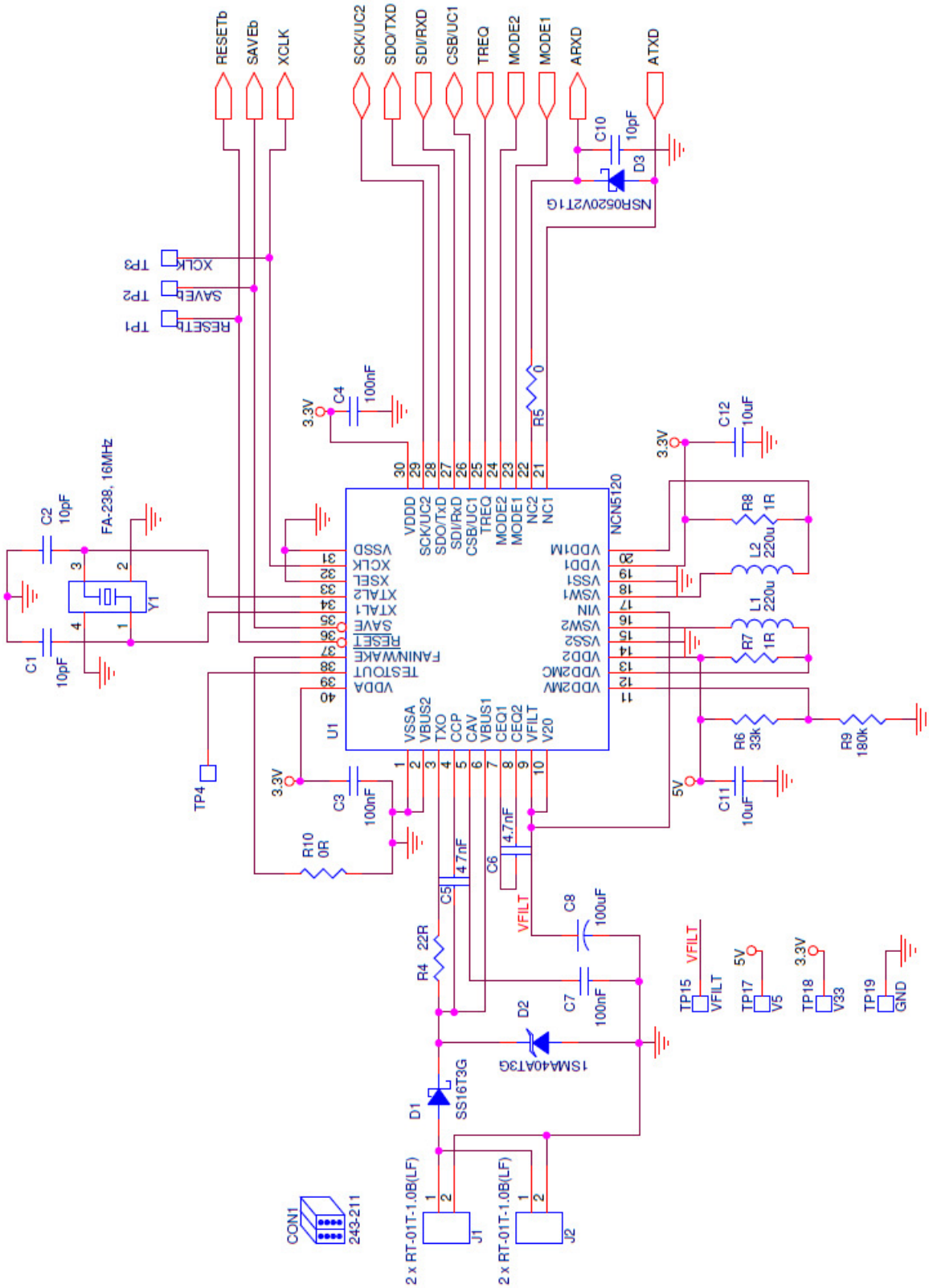


Figure 9. Schematic of NCN5120 Reference Design (Part 1)

# NCN51206GEVB

## APPLICATION SCHEMATIC

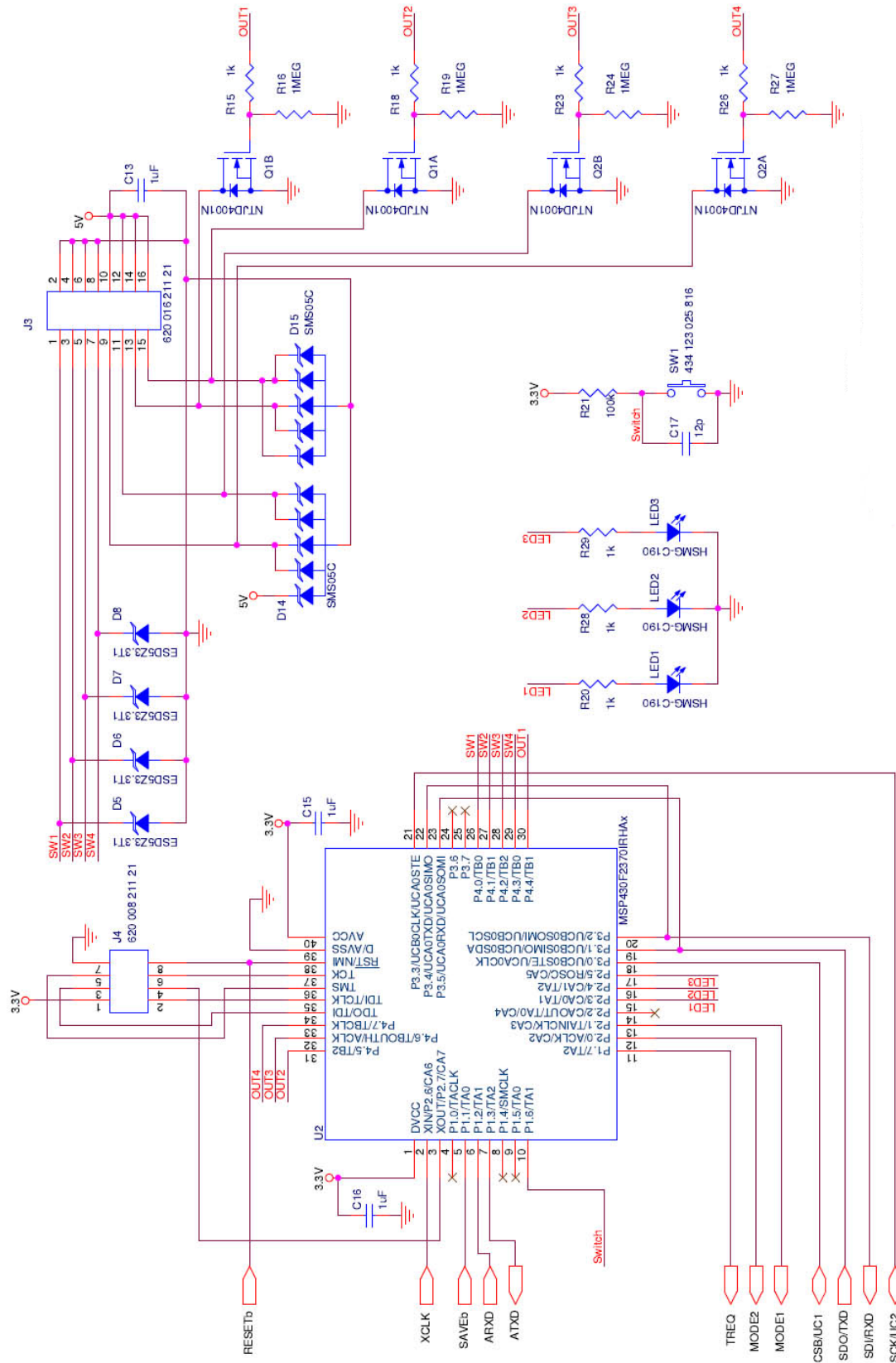


Figure 10. Schematic of NCN5120 Reference Design (Part 2)

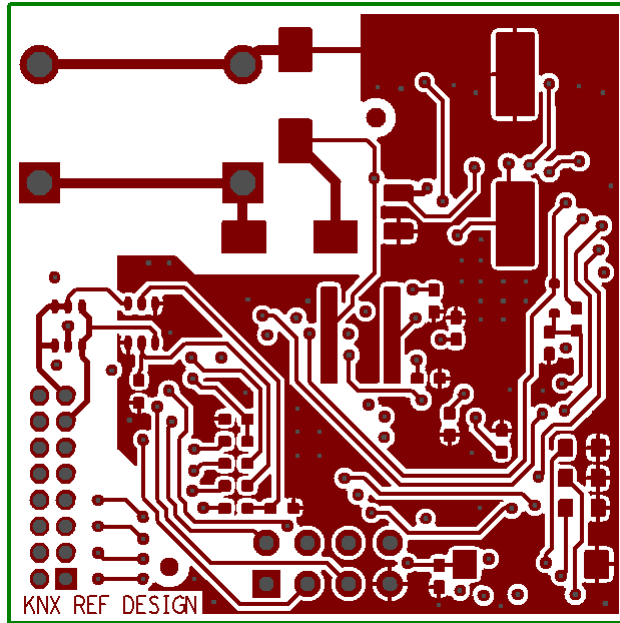


Figure 11. Top Layer of NCN5120 Reference Design

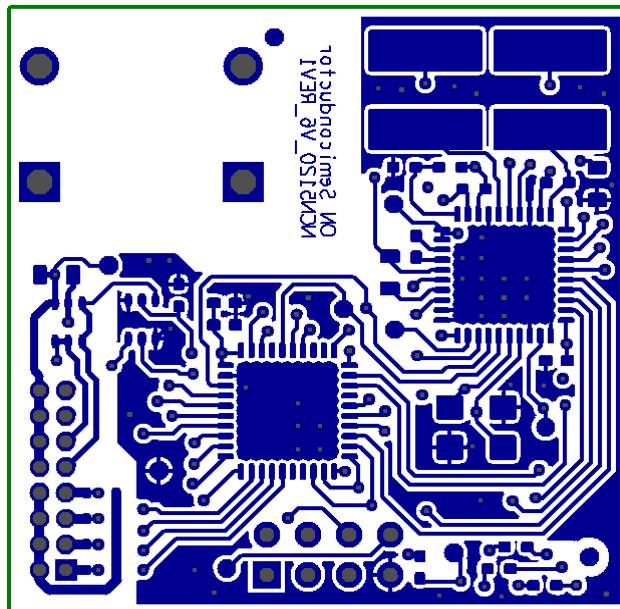


Figure 12. Bottom Layer of NCN5120 Reference Design

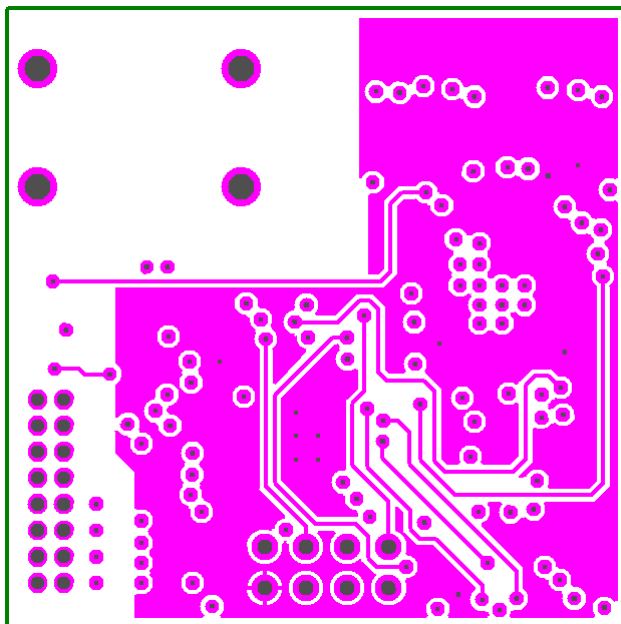


Figure 13. Inner Layer 1 of NCN5120 Reference Design

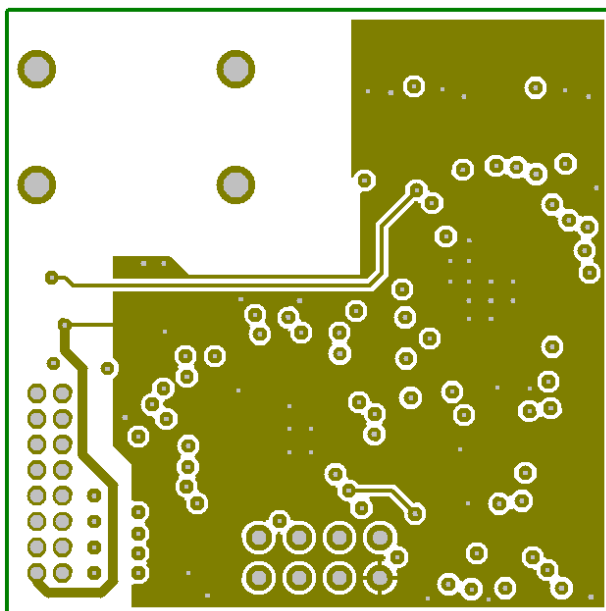


Figure 14. Inner Layer 2 of NCN5120 Reference Design

# NCN51206GEVB

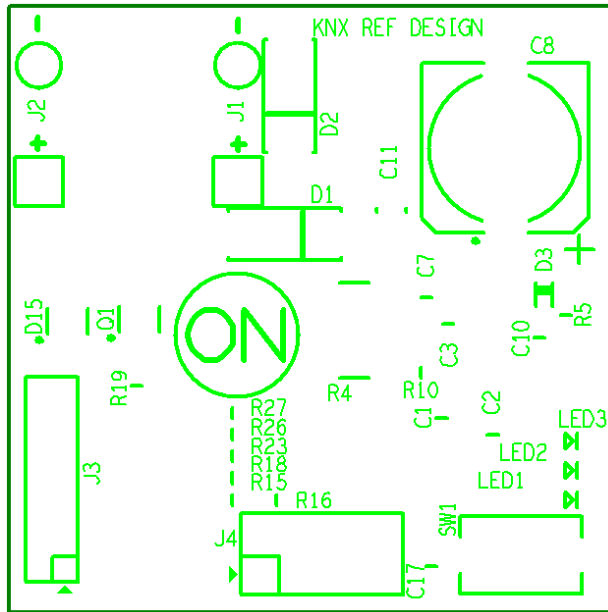


Figure 15. Top Silkscreen of NCN5120 Reference Design

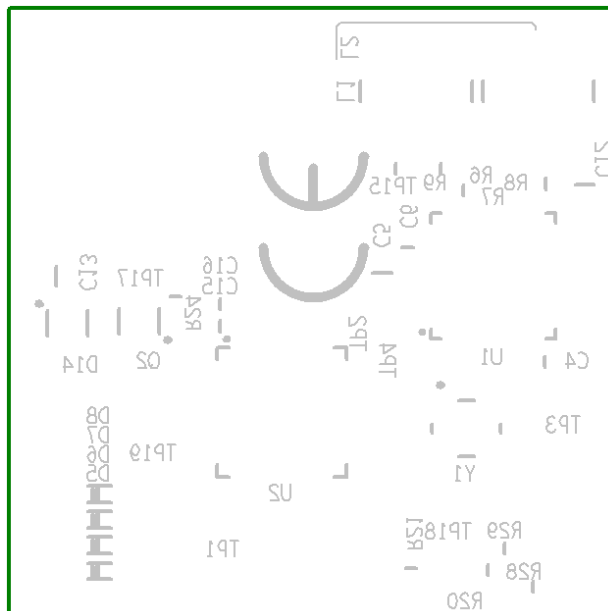


Figure 16. Bottom Silkscreen of NCN5120 Reference Design

# NCN51206GEVB

**Table 5. BILL OF MATERIALS** (Note 1)

Reference	Part Number	Value	Voltage	Power	Tol	Type	Manufacturer	Footprint
CON1	243-211						Wago	NA
C1, C2	C1005COG1H100D	10 pF	6.3V		±5%	Ceramic Multilayer	TDK	0402
C3, C4, C7	C1005X5R0J104M	100 nF	6.3V		±20%	Ceramic Multilayer	TDK	0402
C5	C1608X7R1H473M	47 nF	50V		±20%	Ceramic Multilayer	TDK	0603
C6	C1005X5R1H472K	4.7 nF	50V		±10%	Ceramic Multilayer	TDK	0402
C8	B41145A7107M000	100 µF	35V		±20%	Aluminum Electrolytic	Epcos	8 × 10
C10 (Note 2)	C1005COG1H100D	10 pF	6.3V		±5%	Ceramic Multilayer	TDK	0402
C11	C2012X5R1E106M	10 µF	25V		±20%	Ceramic Multilayer	TDK	0805
C12	C1608X5R0J106M	10 µF	6.3V		±20%	Ceramic Multilayer	TDK	0603
C13	C1608X5R1H105M	1 µF	50V		±20%	Ceramic Multilayer	TDK	0603
C15, C16	C1005X5R0J105M	1 µF	6.3V		±20%	Ceramic Multilayer	TDK	0402
C17	C1005C0G1H120J	12 pF	6.3V		±5%	Ceramic Multilayer	TDK	0402
D1	SS16T3G						ON Semiconductor	SMA
D2	1SMA40AT3G						ON Semiconductor	SMA
D3 (Note 2)	NSR0520V2T1G						ON Semiconductor	SOD-523
D5, D6, D7, D8	ESD5Z3.3T1G						ON Semiconductor	SOD-523
D14, D15	SMF05CT1G						ON Semiconductor	SOT-363-6
J1, J2	RT-01T-1.0B(LF)						JST	5.75 mm pitch
J3	622 016 211 21						Würth Elektronik	1,27 mm pitch
J4	620 008 211 21						Würth Elektronik	2 mm pitch
L1, L2	DA54NP-221K	220 µH			±10%		Coils Electronic	See Datasheet
LED1, LED2, LED3	HSMG-C190						Avago Technologies	1.6 × 0.8
Q1, Q2	NTJD4001NT1G						ON Semiconductor	SOT-363-6
R4	RC1218JK-xx22RL	22 Ω		1 W	±10%	Thick Film	Yageo	1218
R5	RC0402JR-xx0RL	0 Ω		0.0625 W	NA	Thick Film	Yageo	0402
R6	RC0402JR-xx33KL	33 kΩ		0.0625 W	±5%	Thick Film	Yageo	0402
R7, R8	RC0402JR-xx1RL	1 Ω		0.0625 W	±5%	Thick Film	Yageo	0402
R9	RC0402JR-xx180KL	180 kΩ		0.0625 W	±5%	Thick Film	Yageo	0402
R10 (Note 2)	RC0402JR-xx0RL	0 Ω		0.0625 W	NA	Thick Film	Yageo	0402
R15, R18, R23, R26	RC0402JR-xx1KL	1 kΩ		0.0625 W	±5%	Thick Film	Yageo	0402
R16, R19, R24, R27	RC0402JR-xx1ML	1 MΩ		0.0625 W	±5%	Thick Film	Yageo	0402
R20, R28, R29	RC0402JR-xx1KL	1 kΩ		0.0625 W	±5%	Thick Film	Yageo	0402
R21	RC0402JR-xx100KL	100 kΩ		0.0625 W	±5%	Thick Film	Yageo	0402
SW1	434 123 025 816						Würth Elektronik	See Datasheet
U1	NCN5120						ON Semiconductor	QFN-40
U2	MSP430F2370IRHx						Texas Instruments	VQFN-40
Y1	FA-238, 16 MHz, 50 ppm, 10 pF						Epson Toyocom	3.2 × 2.5

1. All devices are Pb-Free.
2. Not mounted.

## FUNCTIONAL DESCRIPTION

Because the NCN5120 Reference Design contains the NCN5120 KNX Transceiver (KNX Certified) no details on KNX will be given in this document. Detailed information on the Certified KNX Transceiver NCN5120 can be found in the NCN5120 datasheet ([www.onsemi.com](http://www.onsemi.com)). Detailed information on the KNX Bus can be found on the KNX website and in the KNX standards ([www.knx.org](http://www.knx.org)).

### KNX Bus Connection

Connection to the KNX bus is done by means of J1 or J2. A standard Wago connector (type 243–211) can be used for this (see Figure 17). A reverse protection diode (D1, Figure 10) is foreseen (mandatory) as also a Transient Voltage Suppressor (D2, Figure 10).



**Figure 17. KNX Bus Connector**

The KNX bus can be connected to J1 if the break-out section is removed from the PCB. When removed the KNX Bus connector (Figure 17) will fit nicely inside the PCB.

### Adjustable DC–DC Converter

NCN5120 provides the power for the complete reference design. It has also a second power supply which can be used to drive external loads. The voltage is programmable between 3.3V and 21V by means of an external resistor divider (R6 and R9, see Figure 10). The voltage divider can be calculated as next:

$$R_6 = \frac{R_9 \times R_{VDD2M}}{R_9 + R_{VDD2M}} \times \frac{V_{DD2} - 3.3}{3.3} \quad (eq. 1)$$

$R_{VDD2M}$  is between 60 k $\Omega$  and 140 k $\Omega$  (typical 100 k $\Omega$ ). The DC value of the KNX bus should at least be higher than  $V_{DD2}$ . Be aware that when changing the  $V_{DD2}$  voltage, D14 and D15 (see Figure 10) need to be replaced. Check the SMF05C datasheet for possible replacements ([www.onsemi.com](http://www.onsemi.com)).

Although  $V_{DD2}$  is capable of delivering 100 mA, the maximum current capability will not always be usable. One needs to make sure that the KNX bus power consumption stays within the KNX specification. The maximum allowed current for  $V_{DD2}$  can be calculated as next:

$$V_{BUS} \times I_{BUS} \geq 2 \times [0.033 + (V_{DD2} \times I_{DD2})] \quad (eq. 2)$$

$I_{BUS}$  is limited by NCN5120. If R10 is not mounted,  $I_{BUS}$  can maximum be 13 mA. If R10 is mounted,  $I_{BUS}$  can maximum be 26 mA.  $I_{BUS}$  will however also be limited by

the KNX standard. Minimum  $V_{BUS}$  is 20 V (see KNX standard).

Above formula gives only an estimation and will mainly depend on the firmware loaded on the microcontroller (U2, see Figure 10). One must always verify that the KNX bus loading is in line with the KNX Specification under all operating conditions!

### Xtal Oscillator

A crystal of 16 MHz (Y1, see Figure 10) is foreseen on the reference design. This clock signal is also supplied to the microcontroller. See the NCN5120 datasheet ([www.onsemi.com](http://www.onsemi.com)) for more details on this signal.

### RESETB and SAVEB

The KNX transceiver NCN5120 controls the reset state of the microcontroller by means of the RESETB signal. An additional signal SAVEB can be monitored by the microcontroller to detect possible issues. See NCN5120 datasheet for more details on these two signals.

### Voltage Supervisors

NCN5120 has different voltage supervisors. Please check the NCN5120 datasheet for more details.

### Temperature Monitor

NCN5120 produces an over-temperature warning (TW) and a thermal shutdown warning (TSD). Please check the NCN5120 datasheet for more details.

### External IO

The reference design has the possibility to monitor up to 4 inputs (pin 1, 3, 5 and 7 of J3) and control up to 4 outputs (pin 9, 11, 13 and 15 of J3). The input pins are 3.3 V compliant and ESD protected (D5 ... D8, Figure 10). J3 is connected in such a way that an easy connection between the input and ground is possible. The microcontroller (U2, see Figure 10) should be configured with an internal pull-up (see microcontroller datasheet on how to do this).

The external outputs are driven by means of low-side drivers (Q1 and Q2, see Figure 10). A gate resistor is foreseen for slope control (R15, R18, R23 and R26 of Figure 10). J3 is routed in such a way that the load can easily be connected between the output (low-side driver) and  $V_{DD2}$ . Q1 and Q2 can be used over the complete  $V_{DD2}$  voltage range. ESD diodes D14 and D15 need to be replaced if  $V_{DD2}$  is increased (see also Adjustable DC-DC Converter).

### Push Button and LED's

One push button (SW1) and 3 LED's (LED1 ... LED3) are foreseen on the reference design. These are freely usable.

### Microcontroller Debug Interface

J4 is the microcontroller debug interface. See the microcontroller datasheet for more info on how to use this interface.

## Interface Mode

The device can communicate with the host controller by means of a UART interface or an SPI interface. The selection of the interface is done by the pins MODE1, MODE2, TREQ, SCK/UC2 and CSB/UC1 which are connected to the microcontroller (see Figure 10). More details on the different interfaces can be found back in Table 6 and the NCN5120 datasheet.

## Digital Description

The implementation of the Data Link Layer as specified in the KNX standard is divided in two parts. All functions related to communication with the Physical Layer and most of the Data Link Layer services are inside NCN5120, the rest of the functions and the upper communication layers are implemented into the microcontroller (see Figure 10 and Figure 18).

The host controller is responsible for handling:

- Checksum
- Parity
- Addressing
- Length

The NCN5120 is responsible for handling:

- Checksum
- Parity
- Acknowledge
- Repetition
- Timing

## Services

All services can be found back in the NCN5120 datasheet ([www.onsemi.com](http://www.onsemi.com)).

## Firmware

No special firmware is provided with the reference design. There will be some basic firmware flashed on the microcontroller (U2, Figure 10) but this is only used to verify the reference design before shipment. The user has the possibility to develop his own firmware but help on programming the microcontroller will not be provided by ON Semiconductor.

NCN5120 contains the physical layer and a part of the data link layer (see Figure 18). ON Semiconductor can provide a library for the microcontroller to complete the data link layer. By no means will ON Semiconductor provide any of the higher layer stacks (Network Layer, Transport Layer, ...). Sufficient 3<sup>rd</sup> party companies are available which have certified higher layer stacks.

## FAQs

### 1. Is this reference design KNX Certified?

No, only NCN5120 is KNX Certified. The reference design may only be used for evaluation

of NCN5120. It is not allowed to use the reference design in a final product or to sell it as a KNX Certified product. Contact ON Semiconductor if you want to use the reference design as a final product.

### 2. What 3<sup>rd</sup> party companies do you recommend for the higher layer stacks?

ON Semiconductor does not recommend any 3<sup>rd</sup> party company in particular. Several 3<sup>rd</sup> party companies have KNX Certified stacks and it's always advised to use one of these stacks. Some companies have experience with NCN5120. Contact ON Semiconductor for more information.

### 3. Can we freely reuse the schematic and layout of this reference design?

It is allowed to reuse the schematic, components and layout of the NCN5120 reference design for your own application. Because the operating conditions of your design are not known by ON Semiconductor, one must always fully verify the design even if it's based on this reference design. Contact ON Semiconductor if additional information is required.

### 4. Can we request ON Semiconductor to supply the higher layer stacks?

By no means will ON Semiconductor provide any higher layer stacks. Certified higher layer stacks can be provided by 3<sup>rd</sup> party companies (see also Firmware).

### 5. How much load can the outputs drive?

The maximum allow load can be calculated with the formula as given in Adjustable DC-DC Converter (page x13).  $I_{DD2}$  defines the maximum load the outputs can drive in total.

### 6. What is the usage of ARXD and ATXD (Figure 10)?

These pins have no meaning and cannot be used.

### 7. I've tried all possible R6 and R9 combinations but I'm not capable of setting $V_{DD2}$ above 6 V. How does this come?

As can be seen in Figure 10,  $V_{DD2}$  (5 V) is connected to an ESD protection diode (D14). This is a 5 V ESD protection diode. Whenever one tries to set  $V_{DD2}$  above 5 V, this ESD diode will trigger and limit the  $V_{DD2}$  voltage to about 6 V. This issue can be solved by, or removing D14 (in an ESD safe area this should not be an issue), or by replacing this 5 V ESD diode with a higher voltage version (see the ESD5Z datasheet for other versions ([www.onsemi.com](http://www.onsemi.com))).

# NCN51206GEVB

8. *Is it possible to test all possible interfaces (UART, SPI, Analog Mode) with KNX REV6?*

Yes, the KNX REV6 board can be used with all possible interfaces. One has to be careful however when using the Analog Mode. In the Analog Mode the digital of NCN5120 is bypassed. If the microcontroller would force the RXD-pin (pin 29) of NCN5120 low, NCN5120 would pull the KNX bus low which could lead to issues.

9. *Is it possible to bypass the microcontroller on the KNX REV6 board and connect NCN5120 directly with our microcontroller board?*

Although the board is not designed for this, this is possible. One could connect NCN5120 directly to your microcontroller board by soldering some

wires on the KNX REV6 board. It is however advised to remove the microcontroller from the KNX REV6 board or to put the microcontroller in reset (short pins 8 and 7 of J4 (see Figure 10)).

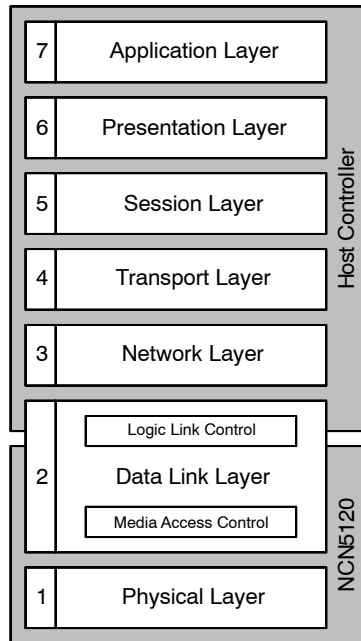
10. *I'm trying to sink more than 13 mA from the KNX bus with KNX REV6 but I'm having issues with the voltage regulators whenever I'm going above 16 mA. What could be the issue?*

To be able to take more than 13 mA from the KNX bus one needs to pull the FANIN/WAKE-pin of NCN5120 low. This can be done by mounting R10 (zero Ohm resistor). After mounting of R10 (see Figure 9), verify carefully if the FANIN/WAKE-pin is pulled to ground! See NCN5120 datasheet for more info on the FANIN/WAKE-pin.

**Table 6. INTERFACE SELECTION**

TREQ	MODE2	MODE1	SCK/UC2	SCB/UC1	SDI/RXD	SDO/TXD	Description
0	0	0	0	0	RXD	TXD	9-bit UART-Mode, 19,200 bps
0	0	0	0	1			9-bit UART-Mode, 38,400 bps
0	0	0	1	0			8-bit UART-Mode, 19,200 bps
0	0	0	1	1			8-bit UART-Mode, 38,400 bps
1	0	0	X	X	Driver	Receiver	Analog Mode
TREQ	0	1	SCK (out)	CSB (out)	SDI	SDO	SPI Master, 125 kbps
TREQ	1	0					SPI Master, 500 kbps

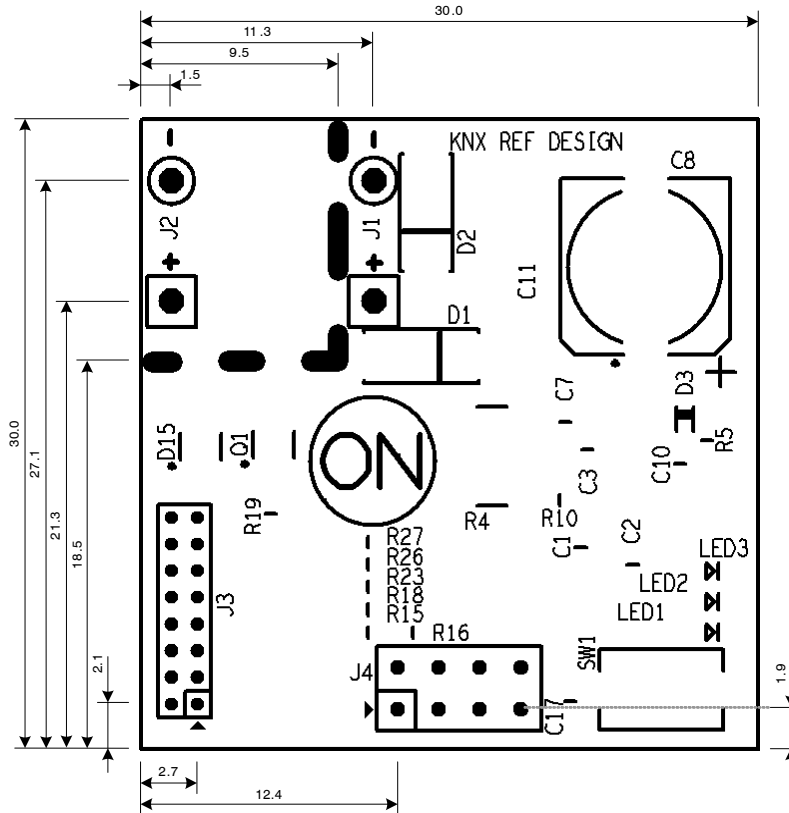
NOTE: X = Don't Care



**Figure 18. OSI Model Reference**

# NCN51206GEVB

## BOARD DIMENSIONS



- Above dimensions are in mm
- Height C8 = 11 mm
- Height J3 = 5.3 mm
- Height J4 = 6 mm
- Height L1 and L2 (bottom side of PCB) = 4.8 mm

The product described herein may be covered by one or more US patents pending.

**ON Semiconductor** and **ON** are registered trademarks of Semiconductor Components Industries, LLC (SCILLC). SCILLC owns the rights to a number of patents, trademarks, copyrights, trade secrets, and other intellectual property. A listing of SCILLC's product/patent coverage may be accessed at [www.onsemi.com/site/pdf/Patent-Marking.pdf](http://www.onsemi.com/site/pdf/Patent-Marking.pdf). SCILLC reserves the right to make changes without further notice to any products herein. SCILLC makes no warranty, representation or guarantee regarding the suitability of its products for any particular purpose, nor does SCILLC assume any liability arising out of the application or use of any product or circuit, and specifically disclaims any and all liability, including without limitation special, consequential or incidental damages. "Typical" parameters which may be provided in SCILLC data sheets and/or specifications can and do vary in different applications and actual performance may vary over time. All operating parameters, including "Typicals" must be validated for each customer application by customer's technical experts. SCILLC does not convey any license under its patent rights nor the rights of others. SCILLC products are not designed, intended, or authorized for use as components in systems intended for surgical implant into the body, or other applications intended to support or sustain life, or for any other application in which the failure of the SCILLC product could create a situation where personal injury or death may occur. Should Buyer purchase or use SCILLC products for any such unintended or unauthorized application, Buyer shall indemnify and hold SCILLC and its officers, employees, subsidiaries, affiliates, and distributors harmless against all claims, costs, damages, and expenses, and reasonable attorney fees arising out of, directly or indirectly, any claim of personal injury or death associated with such unintended or unauthorized use, even if such claim alleges that SCILLC was negligent regarding the design or manufacture of the part. SCILLC is an Equal Opportunity/Affirmative Action Employer. This literature is subject to all applicable copyright laws and is not for resale in any manner.

### PUBLICATION ORDERING INFORMATION

#### LITERATURE FULFILLMENT:

Literature Distribution Center for ON Semiconductor  
P.O. Box 5163, Denver, Colorado 80217 USA  
**Phone:** 303-675-2175 or 800-344-3860 Toll Free USA/Canada  
**Fax:** 303-675-2176 or 800-344-3867 Toll Free USA/Canada  
**Email:** [orderlit@onsemi.com](mailto:orderlit@onsemi.com)

**N. American Technical Support:** 800-282-9855 Toll Free  
USA/Canada  
**Europe, Middle East and Africa Technical Support:**  
Phone: 421 33 790 2910  
**Japan Customer Focus Center**  
Phone: 81-3-5817-1050

**ON Semiconductor Website:** [www.onsemi.com](http://www.onsemi.com)

**Order Literature:** <http://www.onsemi.com/orderlit>

For additional information, please contact your local Sales Representative

## Looking for pricing, stock, or lifecycle information?

Click below to explore more details on WIN SOURCE:

 [View NCN51206GEVB on WIN SOURCE](#)

 [ON Semiconductor](#) Information

## Optimize Your Supply Chain with WIN SOURCE Solutions

-  Global Sourcing Solution
-  Obsolete Management
-  Cost Control Management
-  Shortage Management
-  Alternative Solution
-  Excess Inventory Management