



**THE DATASHEET OF
CC3844-000**

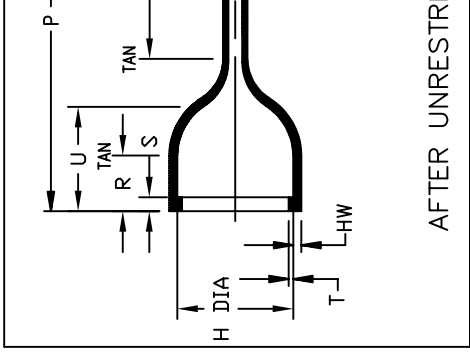
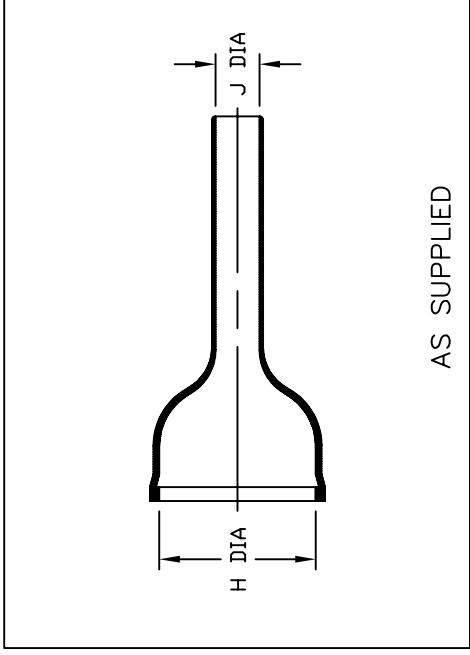


Molded Parts Specification Control Drawing

Part Number : 202D932
Description : Boot

NOTES

- All dimensions are in $\frac{\text{inches}}{[\text{millimeters}]}$
- Dimensions appearing in table are as follows:
a - As Supplied
b - After Unrestricted Recovery
- Coating is optional. As supplied dimensions appearing in table are for uncoated parts. When coating is added, entry diameters will be reduced by .06 max.



AS SUPPLIED

AFTER UNRESTRICTED RECOVERY

TABLE OF DIMENSIONS

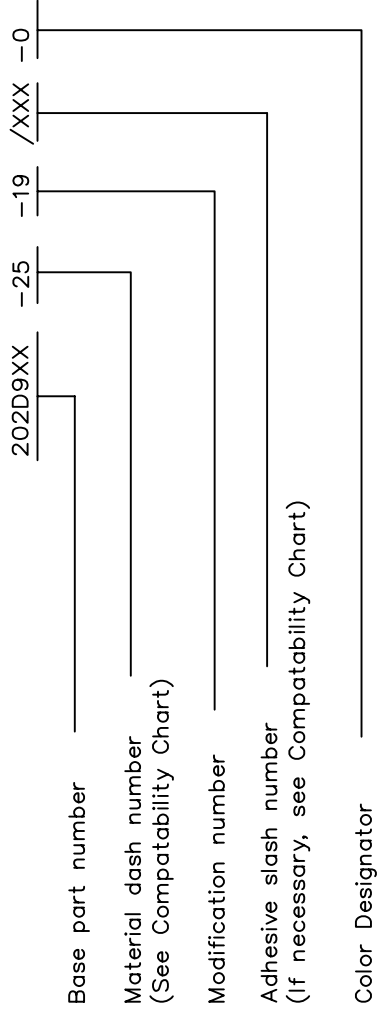
PART NUMBER	H		J		P	R	S	T	U	JO
	Min	Max	Min	Max						
202D932	1.03 [26,1]	.75 [19,1]	.50 [12,7]	.10 [2,6]	2.92 [74,2]	.48 [12,2]	.12 [3,0]	.04 [1,0]	.80 [20,3]	1.77 [45,0]
202D963	1.72 [43,6]	1.34 [34,1]	.50 [12,7]	.14 [3,6]	3.92 [99,6]	.48 [12,2]	.12 [3,0]	.065 [1,65]	1.03 [26,2]	2.27 [57,7]

Molded Parts Specification Control Drawing

Part Number : 20
Description : Boot

COMPATABILITY CHART					
MATERIAL DASH NO.	MATERIAL DESCRIPTION	RT SPEC	COATING SLASH NO.	COATING S NO.	COATING DESCRIPTION
-25	Elastomer, Fluid Resistant	RT-1325	N.A.	N/A	N/A

ORDERING INFORMATION



THIS DRAWING IS SUBJECT TO CHANGE WITHOUT NOTICE; CONSULT YOUR
NEAREST FIELD REPRESENTATIVE FOR CURRENT REVISION



TYCO ELECTRONICS
300 CONSTITUTION DRIVE
MENLO PARK, CALIFORNIA 94025

© 2007 Tyco Electronics Corporation. All rights reserved

Revision : A
Date : 3/15/07
Page 2 of 2

Part Number : 20
Description : Boot
DCR NO. MP070028

Looking for pricing, stock, or lifecycle information?

Click below to explore more details on WIN SOURCE:

 [View CC3844-000 on WIN SOURCE](#)

 [TE Connectivity](#) Information

Optimize Your Supply Chain with WIN SOURCE Solutions

-  Global Sourcing Solution
-  Obsolete Management
-  Cost Control Management
-  Shortage Management
-  Alternative Solution
-  Excess Inventory Management