



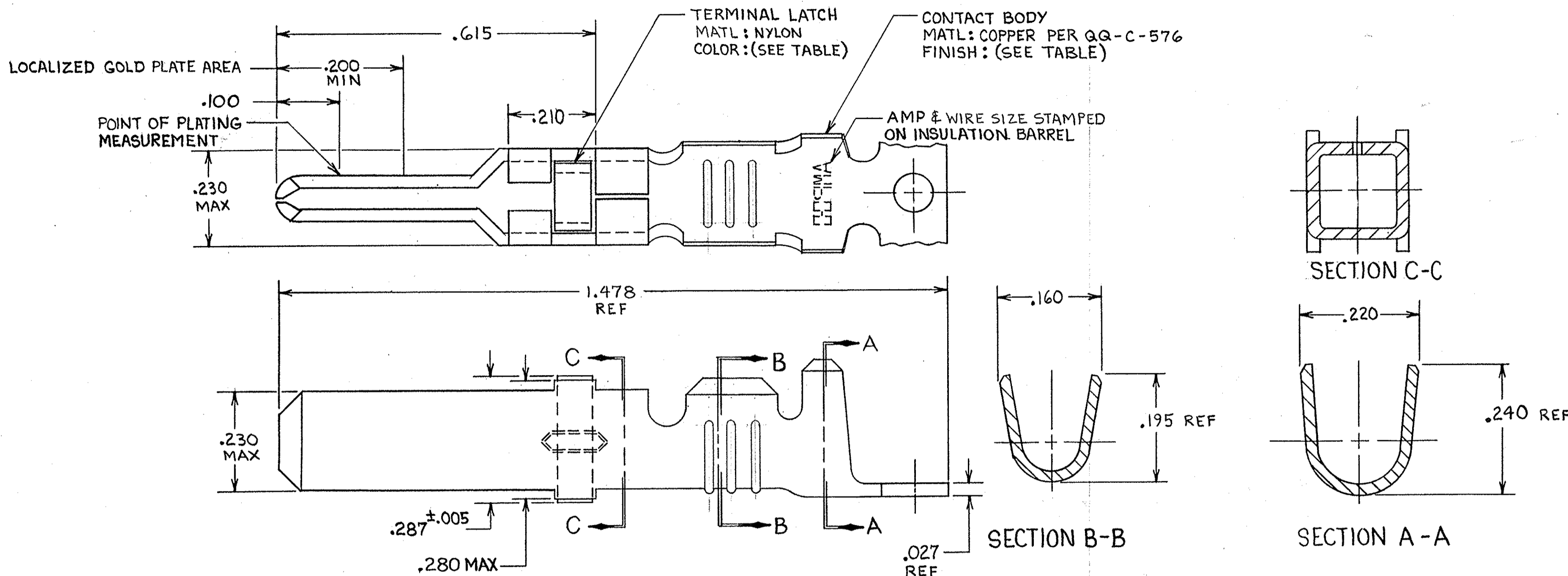
THE DATASHEET OF
66255-6



THIS DRAWING IS UNPUBLISHED. RELEASED FOR PUBLICATION

© COPYRIGHT

REVISIONS						
P	F	ZONE	LTR	DESCRIPTION	DATE	APPROVED
		Z1		REVISED PER ECO-11-005294	06APR11	HMR



- ⚠ REELED FOR USE WITH STANDARD APPLICATORS.
- ⚠ REELED FOR USE WITH HEAVY DUTY MINI-APPLICATORS.
- ⚠ PLATED WITH .000100 MIN SILVER PER QQ-S-365.
- ⚠ PLATED WITH .000015 MIN GOLD PER MIL-G-45204 IN THE LOCALIZED GOLD PLATE AREA, GOLD FLASH ON THE REMAINDER, OVER .000030 MIN NICKEL PER QQ-N-290.
- ⚠ PLATED WITH .000030 MIN GOLD PER MIL-G-45204 IN THE LOCALIZED GOLD PLATE AREA, GOLD FLASH ON THE REMAINDER, OVER .000030 MIN NICKEL PER QQ-N-290.
- ⚠ PLATED WITH .000050 MIN 93-7% TIN-LEAD ALLOY OVER .000030 MIN NICKEL PER QQ-N-290.
- 7. WIRE RANGE = 12-16 AWG.
- 8. INSULATION RANGE = .140-.165 DIA.
- ⚠ PLATED TIN (NO LEAD) .000050 MIN THK PER ASTM-B-545 OVER NICKEL .000030 MIN THK PER QQ-N-290


BLACK	⚠	66261-5	1-66255-2/2
BLACK	⚠	66261-5	1-66255-1
NATURAL	NONE	2	1-66255-0
NATURAL	NONE	2	66255-9
NATURAL	⚠	66261-4	66255-8
NATURAL	⚠	66261-4	66255-7
BLACK	⚠	66261-2	66255-6
BLACK	⚠	66261-1	66255-5
BLACK	⚠	OBSOLETE	66255-4
BLACK	⚠	OBSOLETE	66255-3
BLACK	⚠	66261-2	66255-2
BLACK	⚠	66261-1	66255-1
TERMINAL LATCH COLOR	FINISH	L.P. ASSY P/N REF	STRIP ASSY P/N

UNLESS OTHERWISE SPECIFIED DIMENSIONS ARE IN INCHES. TOLERANCES ON: DECIMALS ±.010 ANGLES ±.010	CONTRACT NO		TE Connectivity MALE TYPE XII CONTACT STRIP ASSEMBLY	
	DR <i>Rick Rohrbach</i> 9-27-85	NAME		
MATERIAL SEE CALLOUT	CHK <i>Larry L. Lawver</i> 10-1-85	APPD <i>B. J. Boland</i> 10-1-85		SIZE C
FINISH SEE DASH NO	APPD <i>Alvin E. Smith</i> 10-5-85	DSGN APPD	OTHER APPD	FSCM NO 00779
				DRAWING NO 66255
				SCALE NTS
				SHEET _____

66255

Looking for pricing, stock, or lifecycle information?

Click below to explore more details on WIN SOURCE:

 [View 66255-6 on WIN SOURCE](#)

 [TE Connectivity](#) Information

Optimize Your Supply Chain with WIN SOURCE Solutions

-  Global Sourcing Solution
-  Obsolete Management
-  Cost Control Management
-  Shortage Management
-  Alternative Solution
-  Excess Inventory Management