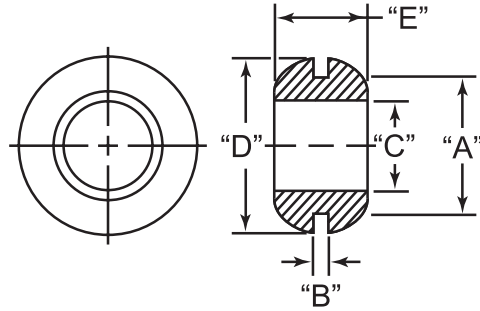




**THE DATASHEET OF
GRO025121A**



GRO
Flexible PVC Hole Grommet




- Non-staining; resistant to ozone, acids and sunlight
- Excellent aging quality

Material: PVC Color: Black							
Part No.	"A" Panel Hole Ø	"B" Panel Thickness	"C" I.D.	"D" O.D.	"E" Depth	Shore A Hardness	Standard Pack
GRO018031A	.188 (4.8)	.031 (.8)	.109 (2.8)	.313 (7.9)	.188 (4.8)	55	10,000
GRO018061A		.063 (1.6)	.125 (3.2)	.313 (7.9)	.250 (6.4)		
GRO023041A	.234 (6.0)	.047 (1.2)	.125 (3.2)	.344 (8.7)	.156 (4)	43	
GRO025031A	.250 (6.4)	.031 (.8)	.156 (4)	.375 (9.5)	.156 (4)	55	
GRO025061A		.063 (1.6)	.156 (4)	.375 (9.5)	.250 (6.4)		
GRO025062A		.063 (1.6)	.188 (4.8)	.375 (9.5)	.281 (7.1)	43	
GRO025121A		.125 (3.2)	.156 (4)	.375 (9.5)	.313 (7.9)		
GRO028091A	.281 (7.1)	.094 (2.4)	.188 (4.8)	.438 (11.1)	.281 (7.1)	55	
GRO031031A	.313 (7.9)	.031 (.8)	.188 (4.8)	.438 (11.1)	.188 (4.8)		
GRO031041A		.047 (1.2)	.219 (5.6)	.438 (11.1)	.156 (4)		
GRO031061A		.063 (1.6)	.219 (5.6)	.438 (11.1)	.219 (5.6)	43	
GRO031121A		.125 (3.2)	.125 (3.2)	.438 (11.1)	.313 (7.9)		
GRO037041A	.375 (9.5)	.047 (1.2)	.281 (7.1)	.563 (14.3)	.188 (4.8)	55	
GRO037061A		.063 (1.6)	.250 (6.4)	.563 (14.3)	.250 (6.4)		
GRO037091A		.094 (2.4)	.250 (6.4)	.563 (14.3)	.281 (7.1)		
GRO040061A	.406 (10.3)	.063 (1.6)	.281 (7.1)	.563 (14.3)	.156 (4)		
GRO043061A	.438 (11.1)	.063 (1.6)	.313 (7.9)	.563 (14.3)	.188 (4.8)		
GRO046071A	.469 (11.9)	.078 (2.0)	.375 (9.5)	.688 (17.5)	.266 (6.8)		
GRO050061A	.500 (12.7)	.063 (1.6)	.375 (9.5)	.688 (17.5)	.281 (7.1)		
GRO050121A		.125 (3.2)	.313 (7.9)	.625 (15.9)	.313 (7.9)		
GRO050122A		.125 (3.2)	.375 (9.5)	.688 (17.5)	.344 (8.7)		
GRO056061A	.563 (14.3)	.063 (1.6)	.438 (11.1)	.750 (19.1)	.250 (6.4)		
GRO062031A	.625 (15.9)	.031 (.8)	.438 (11.1)	.750 (19.1)	.375 (9.5)		
GRO062041A		.047 (1.2)	.500 (12.7)	.813 (20.6)	.281 (7.1)		
GRO068031A	.688 (17.5)	.031 (.8)	.563 (14.3)	.875 (22.2)	.281 (7.1)		
GRO068061A		.063 (1.6)	.500 (12.7)	.875 (22.2)	.250 (6.4)		
GRO068062A		.063 (1.6)	.563 (14.3)	.875 (22.2)	.188 (4.8)		
GRO068121A		.125 (3.2)	.500 (12.7)	.875 (22.2)	.313 (7.9)		
GRO075061A	.750 (19.1)	.063 (1.6)	.625 (15.9)	.875 (22.2)	.219 (5.6)		
GRO075062A		.063 (1.6)	.629 (16)	.938 (23.8)	.188 (4.8)		
GRO081041A	.813 (20.6)	.047 (1.2)	.625 (15.9)	1.063 (27.0)	.313 (7.9)		
GRO087121A	.875 (22.3)	.125 (3.2)	.625 (15.9)	1.063 (27.0)	.375 (9.5)		
GRO100041A	1.000 (25.4)	.047 (1.2)	.750 (19.1)	1.250 (31.8)	.297 (7.5)		
GRO100061A		.063 (1.6)	.750 (19.1)	1.250 (31.8)	.313 (7.9)		
GRO100062A		.063 (1.6)	.875 (22.2)	1.250 (31.8)	.313 (7.9)		
GRO100121A		.125 (3.2)	.750 (19.1)	1.250 (31.8)	.375 (9.5)		
GRO125031A	1.250 (31.8)	.031 (.8)	1.000 (25.4)	1.750 (44.5)	.250 (6.4)		
GRO125061A		.063 (1.6)	1.000 (25.4)	1.500 (38.1)	.297 (7.5)		
GRO125121A		.125 (3.2)	1.000 (25.4)	1.500 (38.1)	.359 (9.1)		
GRO150061A	1.500 (38.1)	.063 (1.6)	1.250 (31.8)	1.813 (46)	.375 (9.5)		
GRO150121A		.125 (3.2)	1.250 (31.8)	1.813 (46)	.438 (11.1)		
GRO175061A	1.750 (44.5)	.063 (1.6)	1.500 (38.1)	2.000 (50.8)	.375 (9.5)		
GRO175121A		.125 (3.2)	1.500 (38.1)	2.000 (50.8)	.375 (9.5)		
GRO200061A	2.000 (50.8)	.063 (1.6)	1.750 (44.5)	2.375 (60.3)	.406 (10.3)		
GRO200121A		.125 (3.2)	1.750 (44.5)	2.375 (60.3)	.469 (11.9)		

Looking for pricing, stock, or lifecycle information?

Click below to explore more details on WIN SOURCE:

 [View GRO025121A](#) on WIN SOURCE

 [Essentra Components](#) Information

Optimize Your Supply Chain with WIN SOURCE Solutions

-  Global Sourcing Solution
-  Obsolete Management
-  Cost Control Management
-  Shortage Management
-  Alternative Solution
-  Excess Inventory Management