

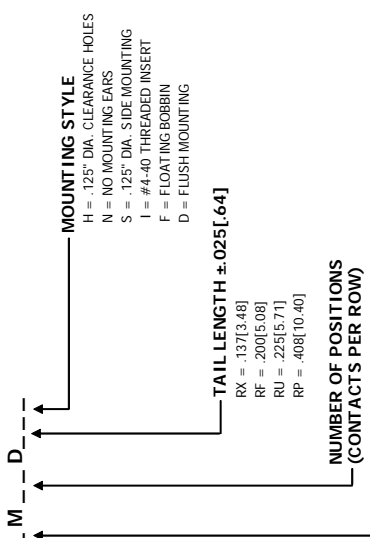


**THE DATASHEET OF  
EBM10DRXH**



REV.	ECO. NO.	DESCS.
C	1662	UPDATE DRA. PART NUM.
D	1771	TABULATE DRF, DRU
E	1808	ADD 'D' MOUNTI

**PART NUMBER CODING**



**MATERIAL (INSULATOR/CONTACT)**

- E = PBT/PHOSPHOR BRONZE**  
OPERATING TEMP.: -65°C TO +125°C @ 3 AMPS PER CONTACT  
PROCESSING TEMP.: -65°C TO +21°C @ 5 AMPS PER CONTACT  
CURRENT RATING PER CONTACT: 260°C FOR 10 SECS MAX
- R = PPS/PHOSPHOR BRONZE**  
OPERATING TEMP.: -65°C TO +125°C  
PROCESSING TEMP.: 260°C FOR 120 SECS MAX  
CURRENT RATING PER CONTACT: 5 AMPS
- G = PA9T/PHOSPHOR BRONZE**  
OPERATING TEMP.: -65°C TO +125°C  
PROCESSING TEMP.: 260°C FOR 120 SECS MAX  
CURRENT RATING PER CONTACT: 5 AMPS
- H = PBT/BERYLLIUM COPPER**  
OPERATING TEMP.: -65°C TO +125°C @ 3 AMPS PER CONTACT  
PROCESSING TEMP.: -65°C TO +105°C @ 5 AMPS PER CONTACT  
CURRENT RATING PER CONTACT: 5 AMPS
- A = PPS/BERYLLIUM COPPER**  
OPERATING TEMP.: -65°C TO +150°C  
PROCESSING TEMP.: 260°C FOR 120 SECS MAX  
CURRENT RATING PER CONTACT: 5 AMPS
- J = PA9T/BERYLLIUM COPPER**  
OPERATING TEMP.: -65°C TO +150°C  
PROCESSING TEMP.: 260°C FOR 120 SECS MAX  
CURRENT RATING PER CONTACT: 5 AMPS
- F = PPS/SPINODAL (CONSULT FACTORY)**  
AVAILABLE IN OVERALL GOLD ONLY (S OR M PLATING CODE)  
OPERATING TEMP.: -65°C TO +200°C  
PROCESSING TEMP.: 260°C FOR 120 SECS MAX  
CURRENT RATING PER CONTACT: 3 AMPS
- C = PPS/BERYLLIUM NICKEL (CONSULT FACTORY)**  
AVAILABLE IN OVERALL GOLD ONLY (S OR M PLATING CODE)  
OPERATING TEMP.: -65°C TO +200°C @ 3 AMPS PER CONTACT  
PROCESSING TEMP.: 260°C FOR 120 SECS MAX  
CURRENT RATING PER CONTACT: 3 AMPS
- W = PEEK/BERYLLIUM NICKEL (CONSULT FACTORY)**  
AVAILABLE IN OVERALL GOLD ONLY (S OR M PLATING CODE)  
OPERATING TEMP.: -65°C TO +250°C  
CURRENT RATING PER CONTACT: 3 AMPS  
(CONSULT FACTORY FOR OTHER MATERIALS)

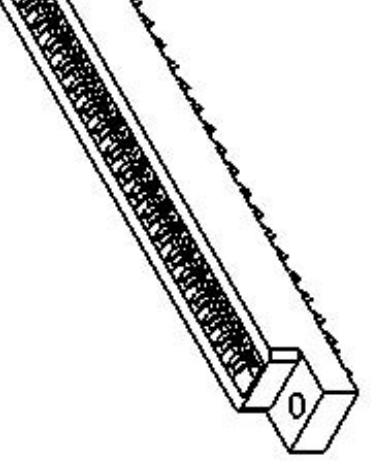
**TAIL LENGTH ±.025 [.64]**  
RX = .137[3.48]  
RF = .200[5.08]  
RU = .225[5.71]  
RP = .408[10.40]

**NUMBER OF POSITIONS (CONTACTS PER ROW)**

**PLATING**

**ALL PLATINGS ARE LEAD FREE AND HAVE .000050" NICKEL UNDERPLATE**  
CONTACT SURFACE TERMINATION  
G = .000010" GOLD  
Y = .000030" GOLD  
B = .000010" GOLD  
C = .000030" GOLD  
**\*\*E = .000100" PURE TIN, MATTE, OVERALL**  
S = .000010" GOLD OVERALL  
M = .000030" GOLD  
**\*\* OVERALL TIN ONLY AVAILABLE ON MATERIAL CODES E, R AND G**

**MOUNTING STYLE**  
H = .125" DIA. CLEARANCE HOLES  
N = NO MOUNTING EARNS  
S = .125" DIA. SIDE MOUNTING  
I = #4-40 THREADED INSERT  
F = FLOATING BOBBIN  
D = FLUSH MOUNTING



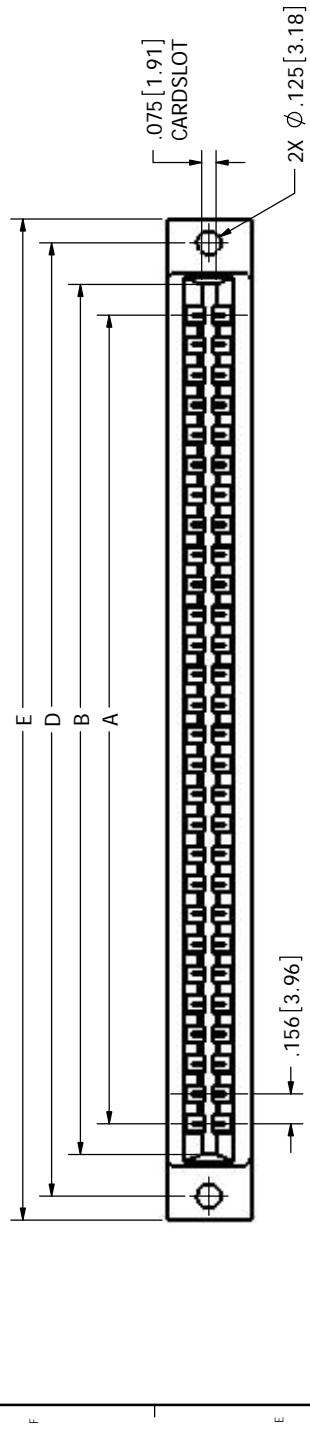
**NOTES:**

1. MATERIALS:
  - A. INSULATOR: SEE PART NUMBER CODING.
  - B. CONTACT: SEE PART NUMBER CODING.
  - C. PLATING: SEE PART NUMBER CODING.
2. THERMAL:
  - A. OPERATING TEMPERATURE: SEE PART NUMBER CODING.
  - B. PROCESSING TEMP.: SEE PART NUMBER CODING.
  - C. UL FLAMMABILITY RATING: 94V-0.
3. ELECTRICAL:
  - A. DIELECTRIC WITHSTANDING VOLTAGE: MATED CONNECTOR MUST EXHIBIT NO EVIDENCE OF BREAKDOWN, FLASHOVER, OR DETERIORATION FROM AN APPLIED VOLTAGE OF 950 VAC (VALUE HAS BEEN DE-RATED), RMS 60 Hz WHEN TESTED IN ACCORDANCE WITH MIL-STD-1344, METHOD 3001. DURATION OF APPLICATION SHALL BE 5 SECS MIN.
  - B. INSULATION RESISTANCE (IR): 5,000 MEGOHMS @ 500 VOLTS ±10% WHEN TESTED IN ACCORDANCE WITH MIL-STD-1344, METHOD 3003 @ 25°C.
  - C. CONTACT RESISTANCE: 30 MILLIOHM MAX AT RATED CURRENT WHEN TESTED PER MIL-STD-202, METHOD 307 @ 25°C ±3°C.
  - D. CURRENT RATING: SEE PART NUMBER CODING.
4. MECHANICAL:
  - A. CONNECTOR IDENTIFICATION: THE PART SHALL BE MARKED WITH A LOT CODE AS A MINIMUM. IF SPACE PERMITS ALSO MARK PART WITH SULLINS WEBSITE, AND PART NUMBER.
  - B. DURABILITY: 500 CYCLES MINIMUM.
  - C. BOARD THICKNESS ACCOMMODATED: .062 ±.008"
  - D. BOARD INSERTION FORCE: 16 OZ MAX PER CONTACT PAIR WHEN USING A .062" TEST BLADE. INTERNAL INSPECTION TO BE PER SULLIN'S WORK INSTRUCTION W17.3-01.
  - E. BOARD WITHDRAWAL FORCE: 1 OUNCE MINIMUM PER CONTACT PAIR USING .062" PCB.

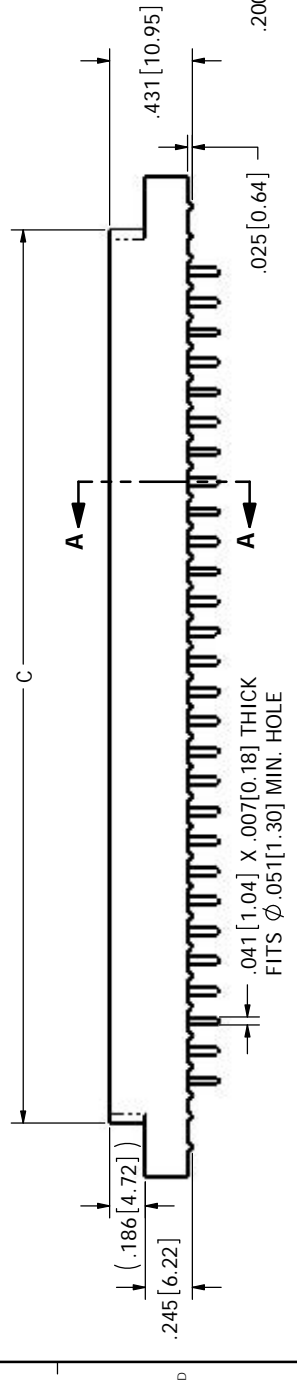


**RoHS COMPLIANT**

UNLESS OTHERWISE SPECIFIED:  
DIMENSIONS ARE IN INCHES(MM)  
ANGLES ARE IN DEGREES  
XX = .02 [5.08]  
XXX = .005 [0.127]  
XXXX = .001 [0.025]  
SURFACE FINISH: 10.3 Ra  
REMOVE ALL BURRS AND SHARP EDGES .010 MAX  
INTERPRET DIMENSIONS AND GEOMETRIC TOLERANCES PER: ANSI Y14.5M-1994

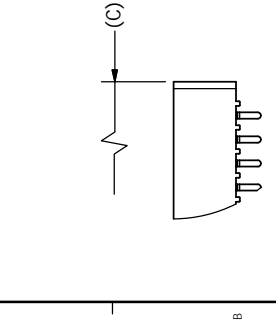


CON  
SC/

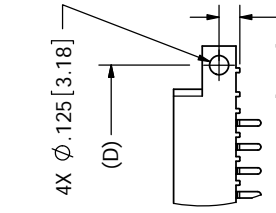


--M\_\_DR\_H

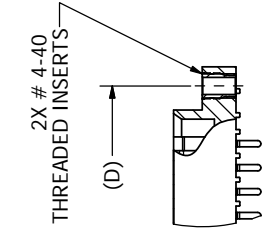
SE



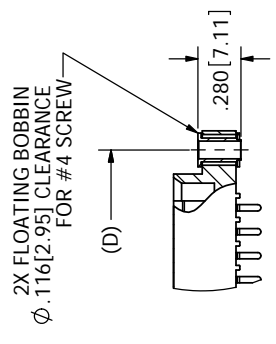
--M\_\_DR\_N



--M\_\_DR\_S



--M\_\_DR\_I



--M\_\_DR\_F

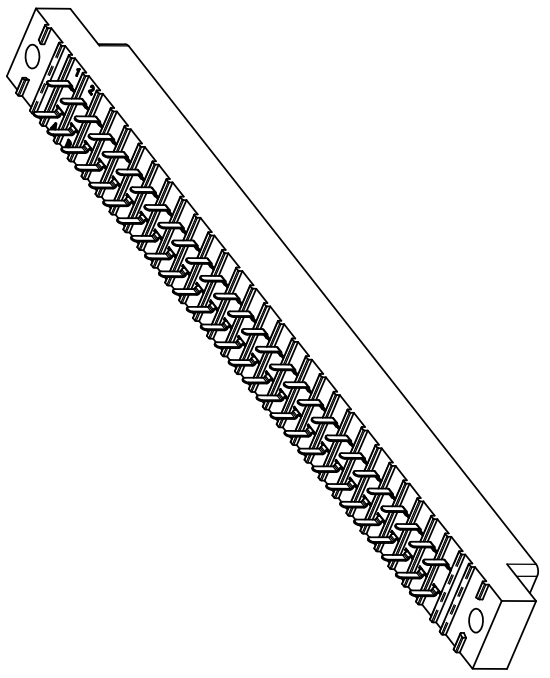
(.222 [5

### MOUNTING STYLES

RoH

Only  
F  
inst  
thre

PART NUMBER	NO. OF POS.	A ± .008[0.20]		B ± .008[0.20]		C ± .015[0.38]		D ± .010[0.25]		E ± .020[0.51]		E ± .020[0.51]
		IN	MM	IN	MM	IN	MM	IN	MM	IN	MM	
		"N" MOUNTING										
__M02D__N	2	0.156	3.96	0.476	12.09	0.596	15.14	1.533	38.94	1.782	45.26	1.8
__M03D__N	3	0.312	7.92	0.632	16.05	0.752	19.10	1.845	46.86	2.094	53.19	2.1
__M06D__--	6	0.780	19.81	1.100	27.94	1.220	30.99	2.157	54.79	2.406	61.11	2.5
__M08D__--	8	1.092	27.74	1.412	35.86	1.532	38.91	2.313	58.75	2.562	65.07	2.6
__M10D__--	10	1.404	35.66	1.724	43.79	1.844	46.84	2.469	62.71	2.718	69.04	2.8
__M11D__--	11	1.560	39.62	1.880	47.75	2.000	50.80	2.937	74.60	3.186	80.92	3.2
__M12D__--	12	1.716	43.59	2.036	51.71	2.156	54.76	3.405	86.49	3.654	92.81	3.7
__M15D__--	15	2.184	55.47	2.504	63.60	2.624	66.65	4.029	102.34	4.278	108.66	4.3
__M18D__--	18	2.652	67.36	2.972	75.49	3.092	78.54	4.341	110.26	4.590	116.59	4.6
__M22D__--	22	3.276	83.21	3.596	91.34	3.716	94.39	4.497	114.22	4.746	120.55	4.8
__M24D__--	24	3.588	91.14	3.908	99.26	4.028	102.31	4.965	126.11	5.214	132.44	5.3
__M25D__--	25	3.744	95.10	4.064	103.23	4.184	106.27	6.213	157.81	6.462	164.13	6.5
__M28D__--	28	4.212	106.98	4.532	115.11	4.652	118.16	7.305	185.55	7.554	191.87	7.6
__M36D__--	36	5.460	138.68	5.780	146.81	5.900	149.86	7.461	189.51	7.710	195.83	7.8
__M43D__--	43	6.552	166.42	6.872	174.55	6.992	177.60					
__M44D__--	44	6.708	170.38	7.028	178.51	7.148	181.56					



RoH

## Looking for pricing, stock, or lifecycle information?

Click below to explore more details on WIN SOURCE:

- ⊖ [View EBM10DRXH on WIN SOURCE](#)
- ⊖ [Sullins Connector Solutions Information](#)

## Optimize Your Supply Chain with WIN SOURCE Solutions

- ✓ Global Sourcing Solution
- ✓ Obsolete Management
- ✓ Cost Control Management
- ✓ Shortage Management
- ✓ Alternative Solution
- ✓ Excess Inventory Management