



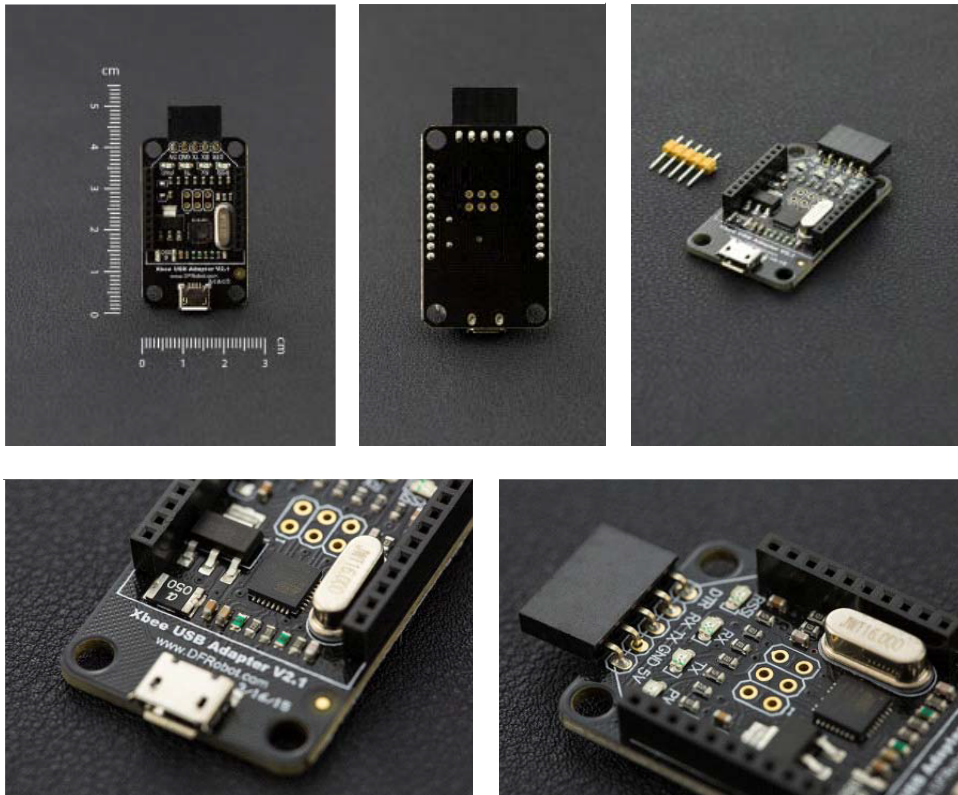
**THE DATASHEET OF
DFR0174**





XBee USB Adapter V2 - Atmega8U2

SKU:DFR0174



INTRODUCTION

The XBee USB Adapter V2 is an update version from DFRobot. It features an Atmega8U2 programmed as a USB-to-serial converter, the same chip found on the Arduino Uno. The Atmega8U2 firmware uses the standard USB COM drivers, and no external driver is needed. However, on Windows, a .inf file is required. It's compatible with all the products using XBee socket. It provides a faster and stable wireless communication for your projects.

The DFRobot Xbee USB adapter is used for the XBee module configuration parameters to facilitate wireless data transmission. It can be easily connected to a PC via USB cable. Furthermore, it can be used with XBee-setting support software X-CTU. It can also be used as a USB-TTL adapter.

It is compatible with:

- All XBee modules including the Series 1 and Series 2.5, standard and Pro version
- Bluetooth Bee
- BLE Link (Support wireless programming)

V2.1 Update: Mini USB port has been replaced by Micro USB port, which is easy to available and compatible with most of Android phone.

SPECIFICATION

- ZigBee X-CTU Compatible
- Micro USB port
- USB-TTL adapter function
- Voltage: +5V(USB Power)

SHIPPING LIST

- XBee USB Adapter V2 x1

Looking for pricing, stock, or lifecycle information?

Click below to explore more details on WIN SOURCE:

 [View DFR0174 on WIN SOURCE](#)

 [DFRobot Information](#)

Optimize Your Supply Chain with WIN SOURCE Solutions

-  Global Sourcing Solution
-  Obsolete Management
-  Cost Control Management
-  Shortage Management
-  Alternative Solution
-  Excess Inventory Management