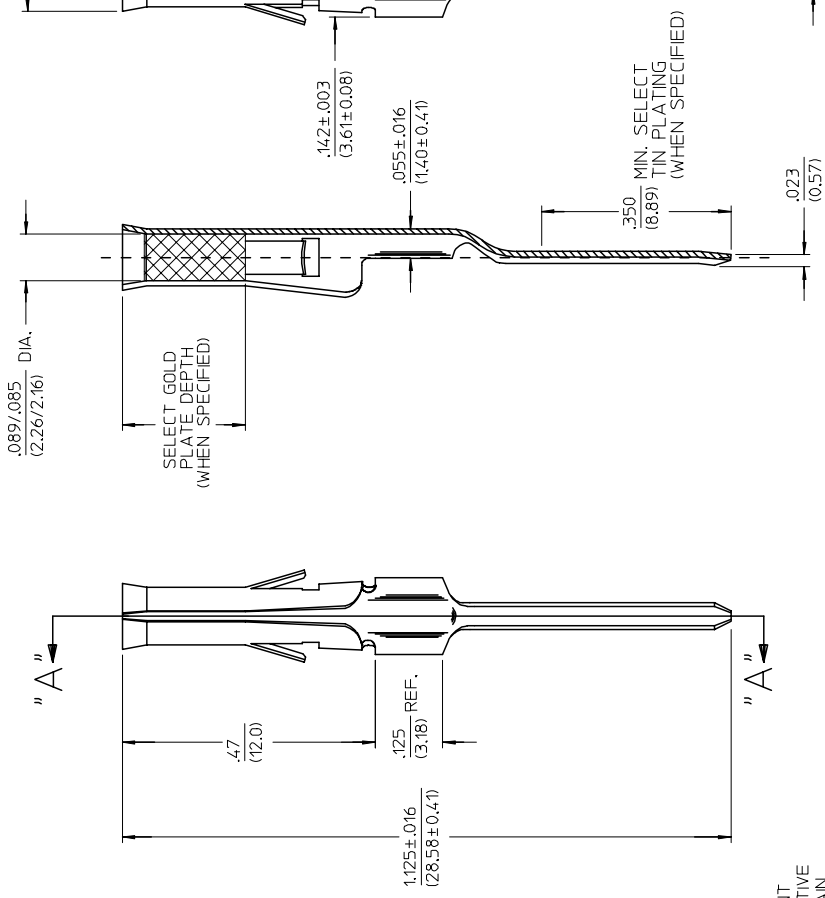
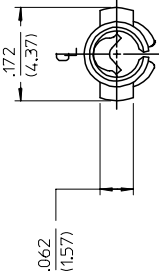




THE DATASHEET OF
02-09-1134



PART NO.	ENG. NO.	SUFFIX WAS
02-09-1134	1377-A(P909)L	-ATL
02-09-5132	1377-A(P228)L	-GL
50-34-8511	1377-A(P154)L	



SECT. "A-A"

LEGEND

1377-A(*****)*
 * FORM L=LOOSE
 * FINISH CODE
 P=PREPLATE
 BLANK=POSTPLATE

- NOTES:**
1. MATERIAL: BRASS
 2. FINISHES:
 - * 909 HOT TIN DIP .000100/(0.00254) MIN. OVER .000050/(0.00127) MIN. NICKEL OVERALL.
 - * 154 OVERALL TIN .000100/(0.00254) MIN. OVER .000050/(0.00127) MIN. NICKEL OVERALL.
 - * 228 SELECT GOLD PLATE .000030/(0.00075) MIN. IN CONTACT AREA; SELECT TIN PLATE .000100/(0.00250) MIN. IN TAIL AREA OVER .000050/(0.00125) NICKEL OVERALL.
 - * THE PRIMARY SHIPPING CARTON WILL BE LABELED, "COMPLIANT TO ROHS DIRECTIVE 2002/95/EC AND ELV ANNEX II OF DIRECTIVE 2000/53/EC", AND CARTONS WITHOUT THIS LABEL MAY CONTAIN PRODUCT WITH TIN-LEAD.
 3. PRODUCT SPECIFICATION: PS-02-09
 4. PACKAGING INFORMATION: NOT AVAILABLE.
 5. TERMINALS FOR USE WITH 0.093/(2.36) SERIES HOUSINGS.
 6. RECOMMENDED P.C. BOARD HOLE SIZE IS .062 .002/(1.57 0.05) DIA.
 7. INSERTION FORCE: 3.5 LBS. MAX. WHEN TERMINAL IS INSERTED INTO AN .093 SERIES HOUSING.

QUALITY SYMBOLS	GENERAL TOLERANCES (UNLESS SPECIFIED)	SCALE	DESIGN UNITS	DATE
-0 -0	4 PLACES ± .001	1:1	INCH	1991/02/18
	3 PLACES ± .005			IN/MM
	2 PLACES ± 0.25			DATE
	1 PLACE ± 0.35			DATE
	ANGULAR ±1/2°			DATE
	DRAFT WHERE APPLICABLE			DATE
	MUST REMAIN WITHIN DIMENSIONS			DATE

ADD P/N 1377-AP154L	EC NO: UCP2006-2524	DRWN: ELHAG 2006/05/15	CHKD: LSCMIDT 2006/05/22	APPR: FSMITH 2006/07/14
REV	DESCRIPTION			

Looking for pricing, stock, or lifecycle information?

Click below to explore more details on WIN SOURCE:

 [View 02-09-1134 on WIN SOURCE](#)

 [Molex, LLC Information](#)

Optimize Your Supply Chain with WIN SOURCE Solutions

-  Global Sourcing Solution
-  Obsolete Management
-  Cost Control Management
-  Shortage Management
-  Alternative Solution
-  Excess Inventory Management