



THE DATASHEET OF
220ADA16





Series 220

7x7mm Compact Rotary DIP Switch

- Robust metal bracket design
- Standard through hole and surface mount gull-wing terminal configurations
- Binary coded decimal, Hexadecimal code and Single pole output
- Clockwise or counterclockwise rotation



Ordering Information

Series	Terminal Type	Actuator Height	Number of Positions	Packaging Type
220	AM	A	04	R

Code	Spec.
AM	Surface mount gull wing, 3.8mm height
AD	Standard through hole, 3.6mm height

Code	Spec.
A	Flush arrow rotor
B	Knurled, slotted, flatted shaft
C	Knurled, slotted shaft

Code	Spec.
04	4 Positions
10	10 Positions
16	16 Positions

Code	Spec.
Blank	Tube packaging only for through hole terminals
R	Tape & reel packaging only for surface mount terminals

Notes: Contact CTS for other common features not listed.



Electrical Specifications

Parameter	Conditions & Remarks	Min	Max	Unit
Output	Binary coded decimal		10	position
	Hexadecimal		16	
	Single pole		4	
Contact Resistance			100	milliohms
Insulation Resistance	Between insulated terminals	1000		megohms
Dielectric Strength	250 Vac between adjacent switches		1	minute
Nonswitching Rating			100 or 50	mA or VDC
Load		1 μ A 20m		VDC

Mechanical and Environmental

Soldering	Maximum reflow temperature, 260°C for 5 seconds Maximum wave temperature, 260°C for 10 seconds Maximum manual temperature, 350°C for 4 seconds
RoHS	Lead-Free. Fully compliant to RoHS
Rotational Torque:	40~200 gf-cm
Actuation Life	10,000 steps
Marking:	Special top marking available-consult CTS
Packaging :	Standard anti-static tube packaging for through hole terminal Standard tape and reel packaging for gull wing terminal
Operating Temperature Range	-40°C to +85°C
Storage Temperature Range:	-40°C to +85°C

Mechanical Specifications

Figure 1 – 220AM_10, 16R - Surface Mount Gull Wing, 10 and 16 Position

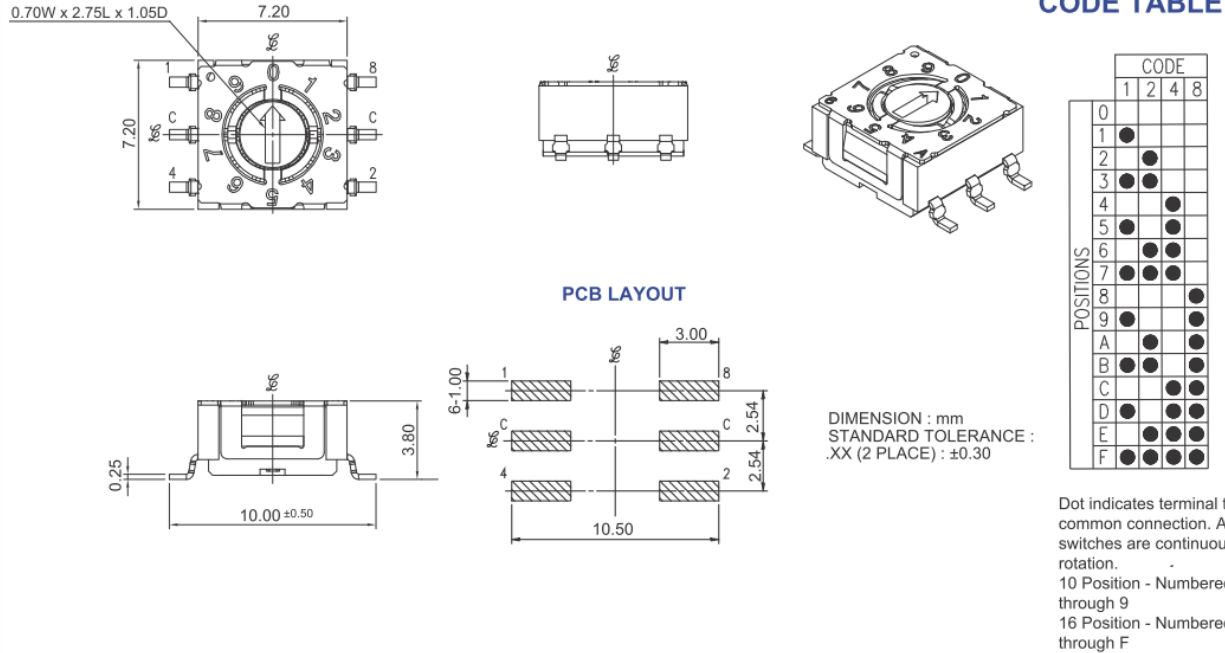


Figure 2 – 220AD_10, 16 - Standard Through Hole, 10 and 16 Position

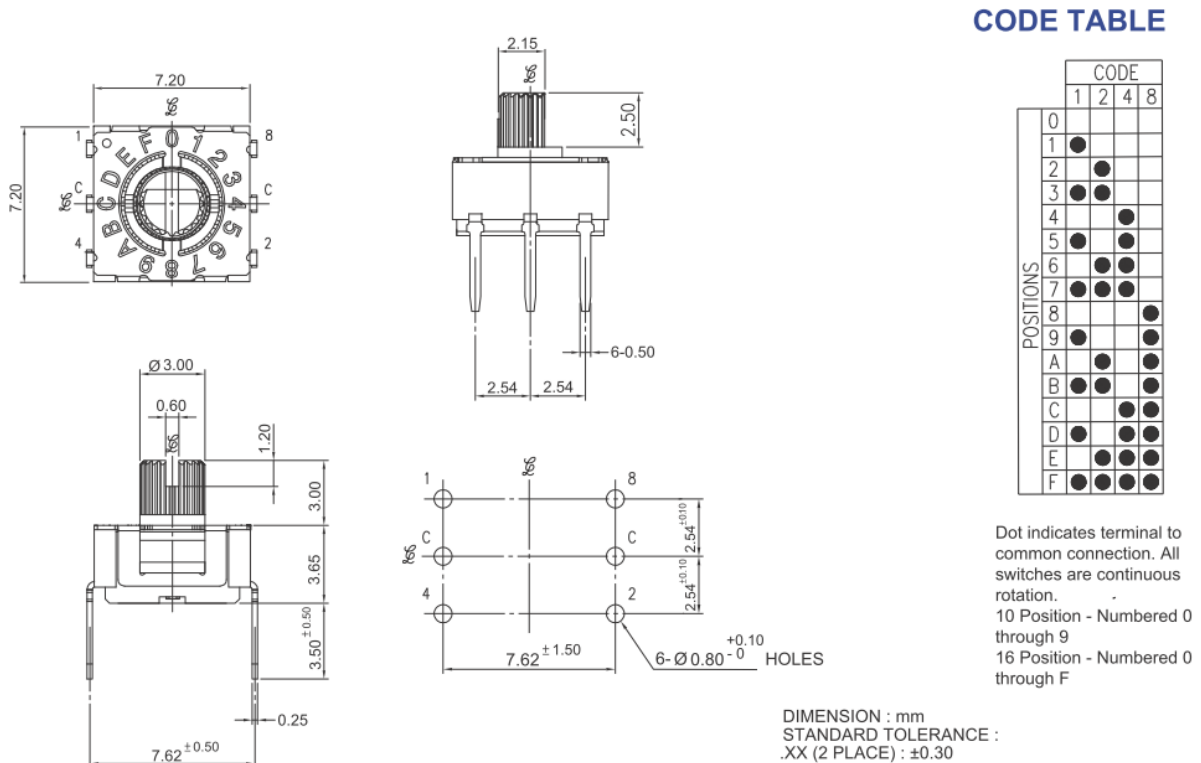
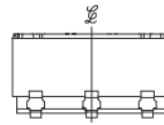
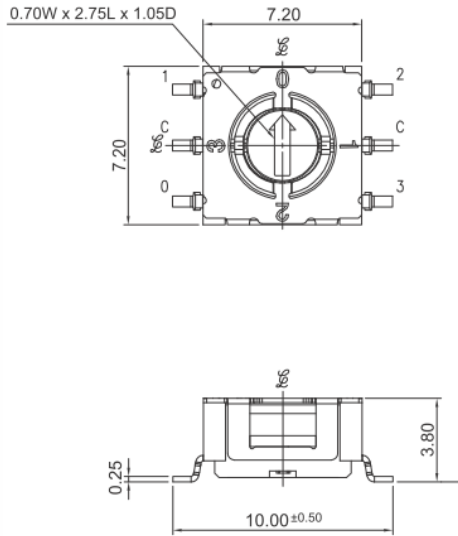
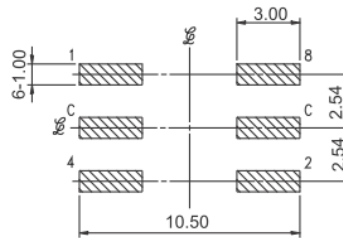


Figure 3 – 220AM_04R - Surface Mount Gull Wing, 4 Position



PCB LAYOUT



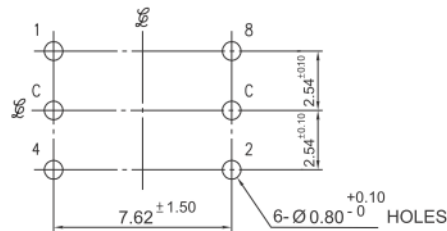
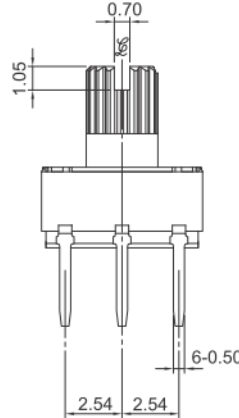
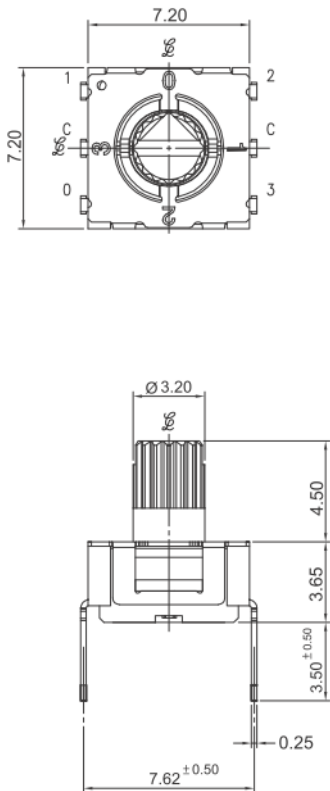
CODE TABLE

		CODE			
		0	1	2	3
POSITIONS	0	●			
	1		●		
	2			●	
	3				●

Dot indicates terminal to common connection. All switches are continuous rotation.
4 Position - Single pole

DIMENSION : mm
STANDARD TOLERANCE :
.XX (2 PLACE) : ±0.30

Figure 4 – 220AD_04 - Standard Through Hole, 4 Position

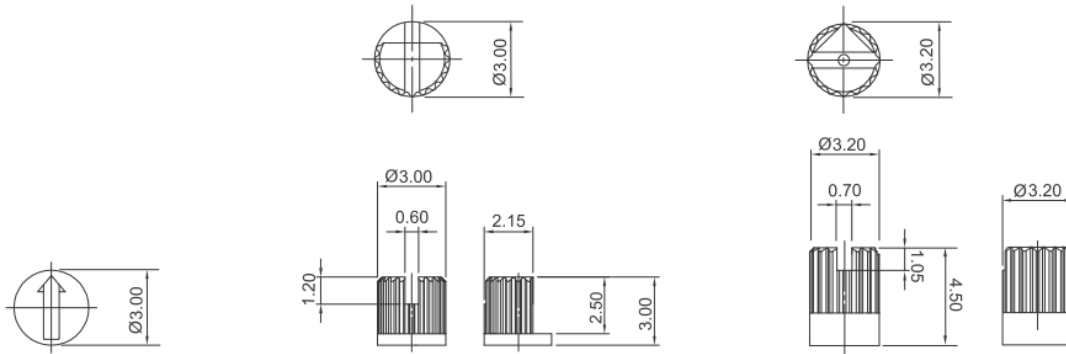


CODE TABLE

		CODE			
		0	1	2	3
POSITIONS	0	●			
	1		●		
	2			●	
	3				●

Dot indicates terminal to common connection. All switches are continuous rotation.
4 Position - Single pole

DIMENSION : mm
STANDARD TOLERANCE :
.XX (2 PLACE) : ±0.30



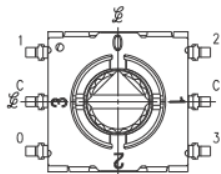
A: FLUSH ARROW ROTOR

B: KNURLED, SLOTTED, FLATTED SHAFT

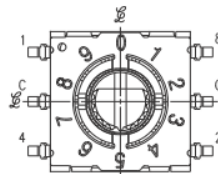
C: KNURLED, SLOTTED SHAFT

DIMENSION : mm
STANDARD TOLERANCE :
.XX (2 PLACE) : ±0.30

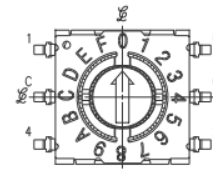
Position Options



04: 4 POSITIONS



10: 10 POSITIONS

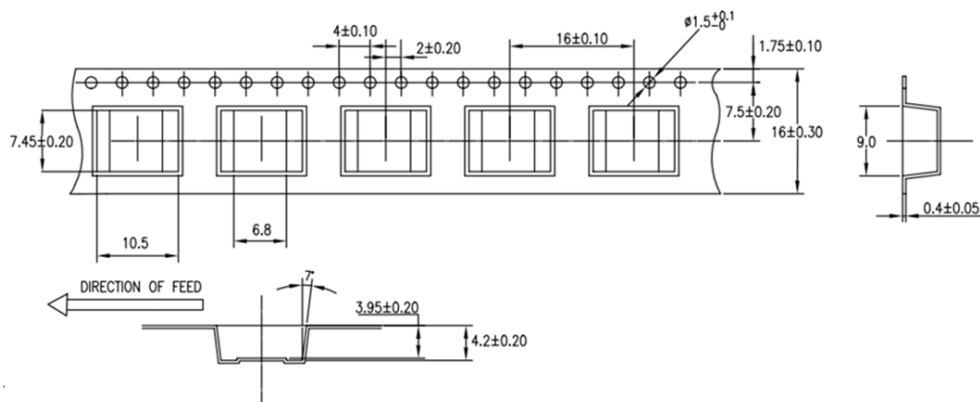


16: 16 POSITIONS

Packing: Tape and Reel

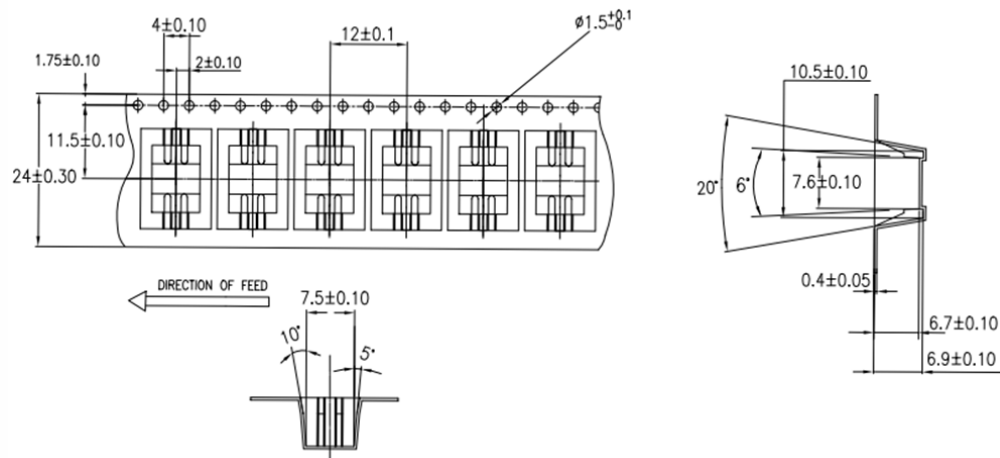
TAPE : ↵

(A) 220AMAxxR –MATERIAL& DIMENSIONS: ↵



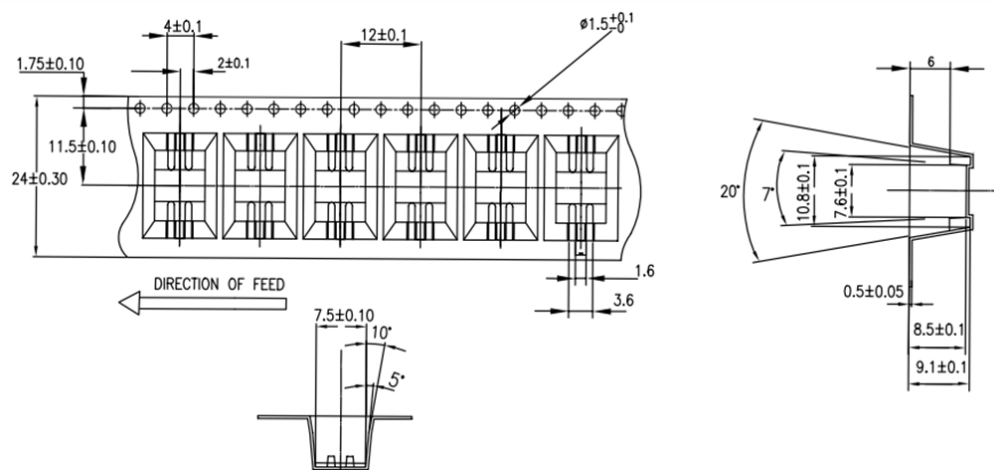
MATERIAL: CONDUCTIVE POLYSTYRENE, BLACK COLOR
ALL DIMENSIONS MEET EIA-481-2A REQUIREMENTS
CARRIER TAPE THICKNESS: 0.40±0.05MM.
PACKING LENGTH PER 13" REEL: 16.6 METERS.
COMPONENT LOADED PER 13" REEL: 1038 PCS.
SPQ: 1000 PCS/ REEL

(B) 220AMBxxR – MATERIAL & DIMENSIONS:



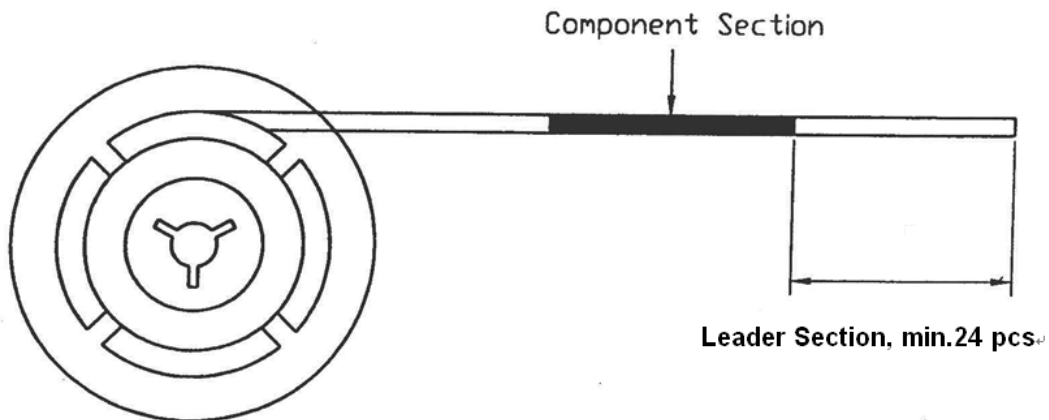
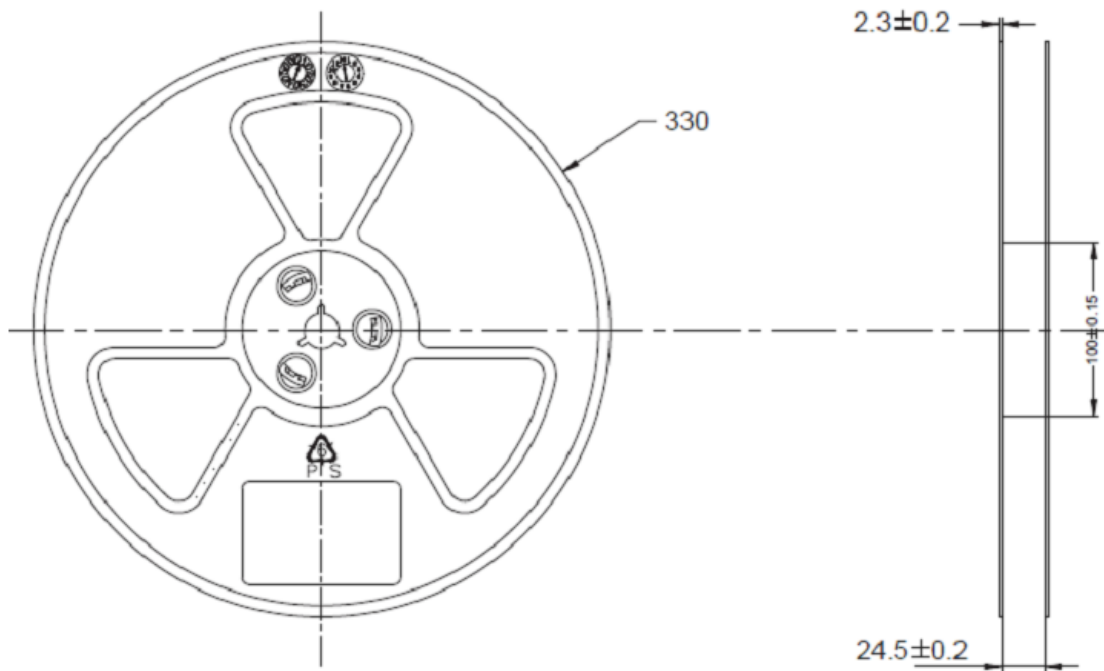
MATERIAL: ANTI-STATIC POLYSTYRENE, TRANSPARENT, BLACK COLOR
ALL DIMENSIONS MEET EIA-481-B REQUIREMENTS
CARRIER TAPE THICKNESS: 0.40±0.05MM.
PACKING LENGTH PER 13" REEL: 8.93 METERS.
COMPONENT LOADED PER 13" REEL: 744 PCS.
SPQ: 700 PCS/REEL

(C) 220AMCxxR – MATERIAL & DIMENSIONS:



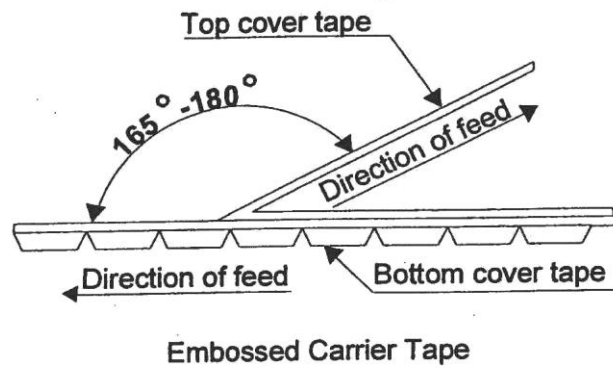
REEL:

(A) SPECIFIED REEL PARTS DIMENSIONS : (COMMON TO ALL SMT COMPONENTS)



**TAPE BREAK FORCE, PEEL STRENGTH AND ANGLE:
REQUIRED SETTINGS :**

- TOP COVER TAPE PEEL FORCE : 10 ~ 140 gm
- ANGLE BETWEEN THE TOP COVER TAPE AND THE DIRECTION OF FEED DURING PEEL OFF : 165° ~ 180°



THE COVER TAPES MAY NOT EXTEND OVER THE DEGE OF THE CARRIER TAPE OR COVER ANY PART OF THE SPROCKETS HOLES.

Looking for pricing, stock, or lifecycle information?

Click below to explore more details on WIN SOURCE:

- ⊖ [View 220ADA16](#) on WIN SOURCE
- ⊖ [CTS Electrocomponents](#) Information

Optimize Your Supply Chain with WIN SOURCE Solutions

- ✓ Global Sourcing Solution
- ✓ Obsolete Management
- ✓ Cost Control Management
- ✓ Shortage Management
- ✓ Alternative Solution
- ✓ Excess Inventory Management