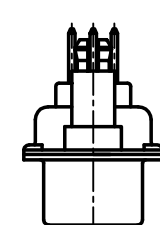
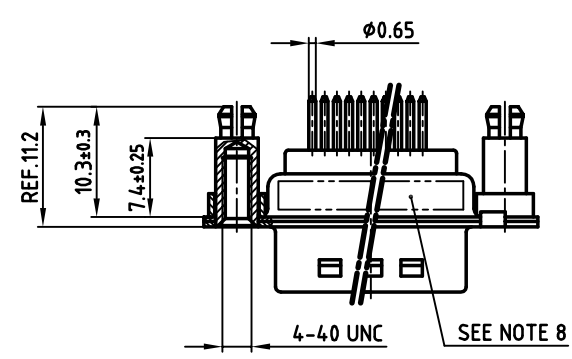
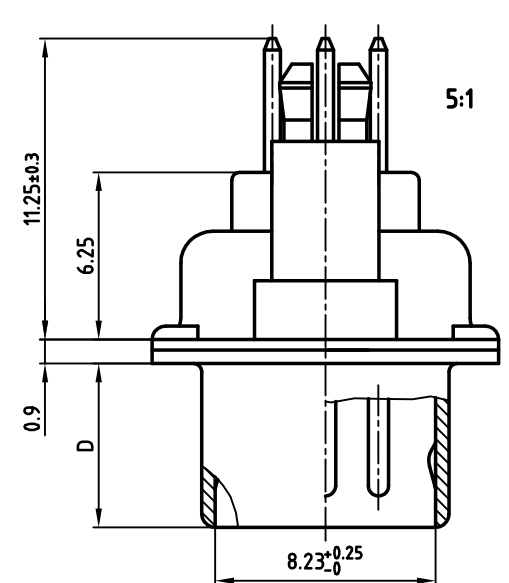
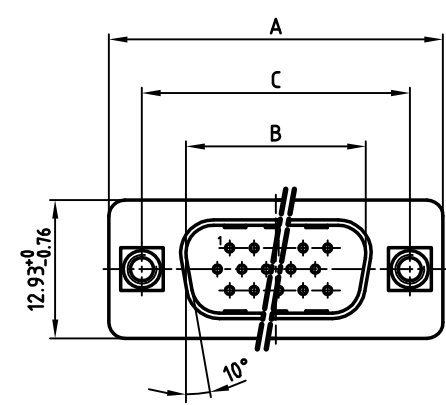




**THE DATASHEET OF
163A16959X**



used for: D-SUB HD



NOTES:

1. METALSHELLS: STEEL; min. 320 μ " TIN
2. INSULATORS: PBT GF UL 94 V-0, BLACK
3. CONTACTS: COPPER ALLOY
PLATING: 8 μ " HARD GOLD OVER min. 50 μ " NICKEL
4. THREADED SPACER CLIP: COPPER ALLOY; min. 200 μ " TIN over 80 μ " NICKEL
PCB-HOLE: $\phi 3.1 \pm 0.1$; PCB THICKNESS 1.6mm
5. COLLAR: COPPER ALLOY; min. 200 μ " TIN over 80 μ " NICKEL
6. P.C.B. HOLE DRILLINGS ON DRAWING NO.: 16V1H5B
7. MAXIMUM TORQUE VALUE FOR THREAD: 6" LBS
8. CONNECTOR IS PART MARKED: PART-NO. CONEC ABC

POS.	A ^{-0.76}	B ^{+0.25}	C ^{+0.12} _{-0.13}	D ^{-0.3}	Part NO.
15	31.19	16.79	25.00	6.12	163A16949X
26	39.52	25.12	33.30	6.12	163A16959X
44	53.42	38.84	47.04	5.99	163A16969X
62	69.70	55.30	63.50	5.99	163A16979X

APPROVAL * FREIGABE * DEBLOCAGE * AUTORIZACION * APPROVAL

CUSTOMER APPROVAL DATE:

NAME: TITLE:

COMPANY NAME:

APPROVAL * FREIGABE * DEBLOCAGE * AUTORIZACION * APPROVAL

THIS DRAWING MAY NOT BE COPIED OR REPRODUCED IN ANY WAY, AND MAY NOT BE PASSED ON TO A THIRD PARTY WITHOUT WRITTEN PERMISSION.
 OWNERSHIP AND COPYRIGHT OF CONEC GmbH
 DO NOT ALTER CAD DRAWING BY HAND

rev.	description	date	name

tolerance ϕ dim. in mm

scale: 2:1 (5:1)
material: SEE NOTES

title: **D-SUB HD MALE**
15-62pos. SOLDER PIN STRAIGHT
with threaded spacer clip

dwg no: AutoCAD 2004 DIN-A
16K2A645 3 sh: 1/1



part no: **SEE TABLE**

2005 date name
drawn 16.03. Lehmenkühler
appd. 16.03. Mickenbecker
norm DIN 41652
d-old

CONEC

Looking for pricing, stock, or lifecycle information?

Click below to explore more details on WIN SOURCE:

-  [View 163A16959X on WIN SOURCE](#)
-  [Conec Information](#)

Optimize Your Supply Chain with WIN SOURCE Solutions

-  Global Sourcing Solution
-  Obsolete Management
-  Cost Control Management
-  Shortage Management
-  Alternative Solution
-  Excess Inventory Management