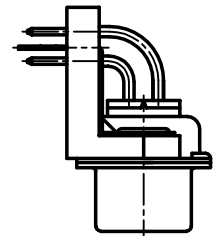
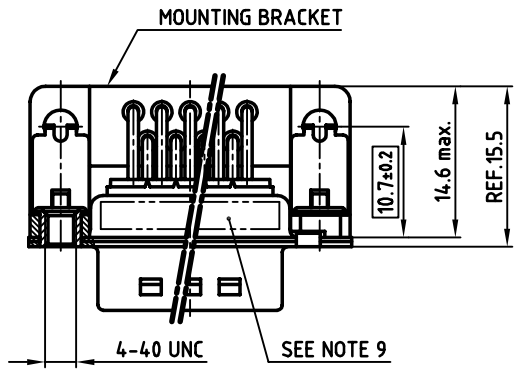
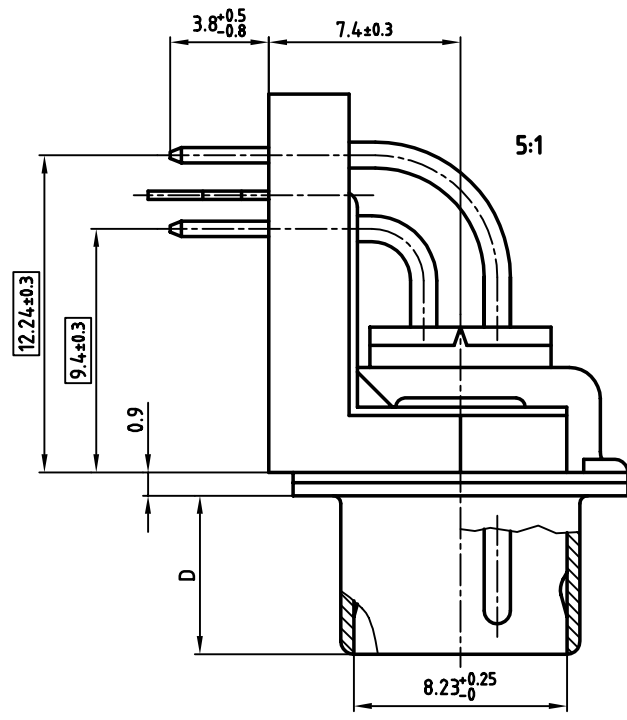
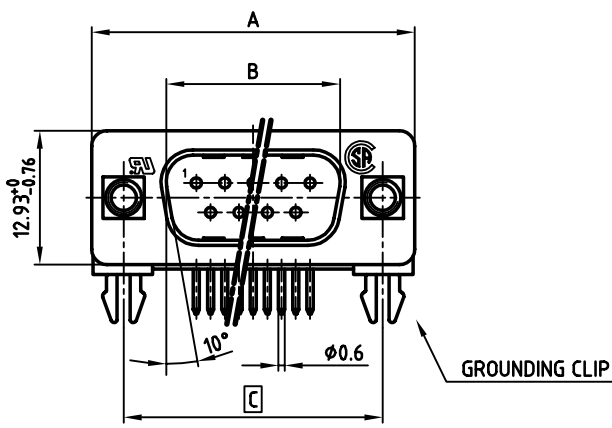




**THE DATASHEET OF
163A14519X**



used for: D-SUB



NOTES:

1. METALSHELLS: STEEL; min. 320µ" TIN
2. INSULATORS: PBT GF UL 94 V-0, BLACK
3. CONTACTS: COPPER ALLOY
PLATING: min. 8µ" HARD GOLD OVER min. 50µ" NICKEL
4. MOUNTING BRACKET: PBT GF UL 94 V-0, BLACK
5. THREADED INSERT: COPPER ALLOY; min. 200µ" TIN over 80µ" NICKEL
6. GROUNDING-CLIP: COPPER ALLOY; min. 200µ" TIN over 80µ" NICKEL
PCB-HOLE: $\phi 3.1 \pm 0.1$; PCB THICKNESS 1.6mm
7. P.C.B. HOLE DRILLINGS ON SHEET 2
8. MAXIMUM TORQUE VALUE FOR THREAD: 6" LBS
9. CONNECTOR IS PART MARKED: PART-NO. CONEC Y/WW
10. = CRITICAL DIMENSION

POS.	A -0.76	B +0.25	C	D -0.3	PART NO.
9	31.19	16.79	25.00 $^{+0.12}$ / $^{-0.13}$	6.12	163A14489X
15	39.52	25.12	33.30 $^{+0.15}$ / $^{-0.1}$	6.12	163A14499X
25	53.42	38.84	47.04 ± 0.13	5.99	163A14509X
37	69.70	55.30	63.50 ± 0.13	5.99	163A14519X

APPROVAL # FREIGABE # DEBLOCAGE # AUTORIZACION # APPROVAL

CUSTOMER APPROVAL DATE:

NAME: TITLE:

COMPANY NAME:

APPROVAL # FREIGABE # DEBLOCAGE # AUTORIZACION # APPROVAL

THIS DRAWING MAY NOT BE COPIED OR REPRODUCED IN ANY WAY, AND MAY NOT BE PASSED ON TO A THIRD PARTY, WITHOUT WRITTEN PERMISSION. OWNERSHIP AND COPYRIGHT OF CONEC GmbH DO NOT ALTER CAD DRAWING BY HAND

rev.	description	date	name

tolerance dim. in mm

scale: 2:1 (5:1)

material: SEE NOTES

title: **D-SUB MALE 90°**
9-37pos. 0.370inch
thread insert, mounting bracket, grounding clip

dwg no: AutoCAD 2000 DIN-A

16K1A804 3 sh:1/2

part no: SEE TABLE



Looking for pricing, stock, or lifecycle information?

Click below to explore more details on WIN SOURCE:

 [View 163A14519X on WIN SOURCE](#)

 [Conec Information](#)

Optimize Your Supply Chain with WIN SOURCE Solutions

-  Global Sourcing Solution
-  Obsolete Management
-  Cost Control Management
-  Shortage Management
-  Alternative Solution
-  Excess Inventory Management