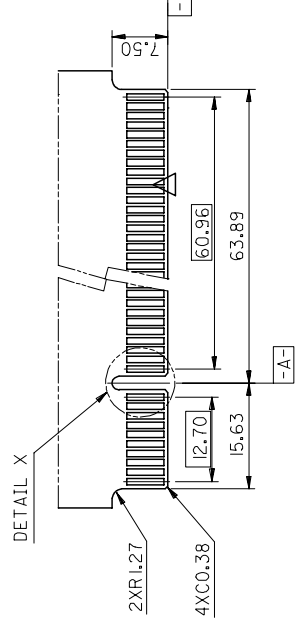
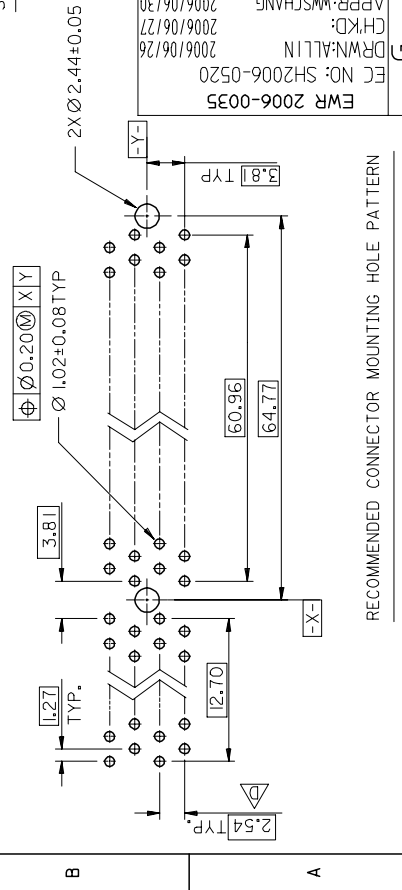
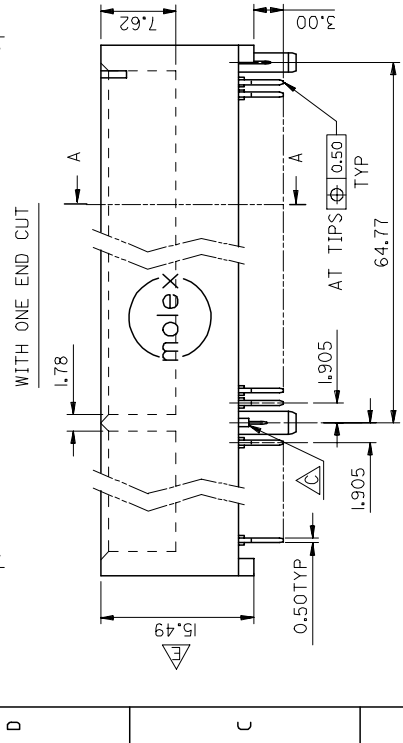
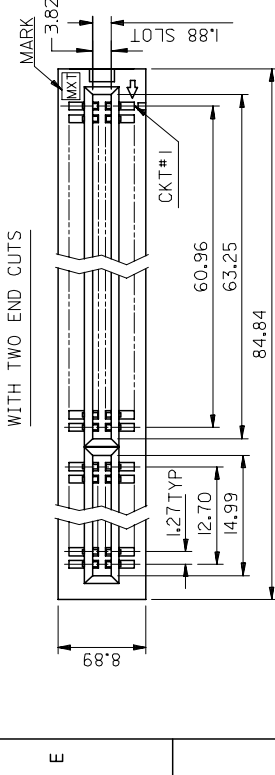
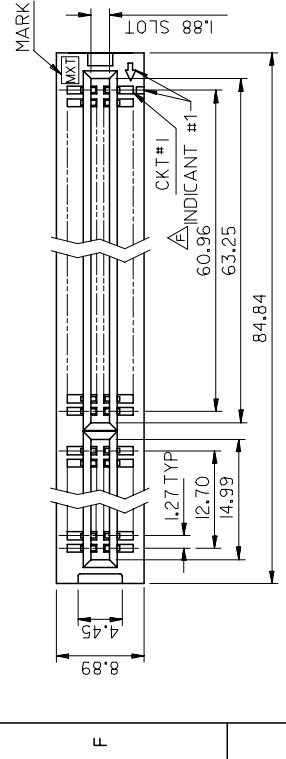


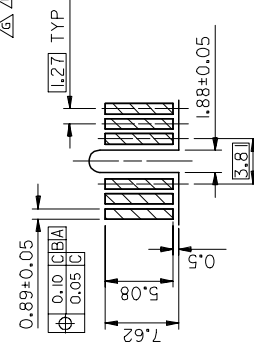


10 9 8 7 6 5 4 3

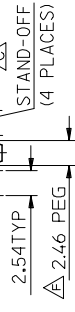


RECOMMENDED MATING P.C-BOARD EDGE CONFIGURATION

- NOTES :
- MATERIAL : PPS
  - HOUSING : PHOSPHO
  - TERMINAL : GOLD FLASH
  - FINISH Ø : GOLD FLASH
  - 1 : 0.25 MICRO BOTH OVER
  - 152 MICRO BOTH OVER
  - 2 : 0.38 MICRO BOTH OVER
  - 152 MICRO BOTH OVER
  - 3 : 0.76 MICRO BOTH OVER
  - 152 MICRO BOTH OVER
  - 4 : 0.50 MICRO BOTH OVER
  - 152 MICRO BOTH OVER



DETAIL X



SECTION A-A

- △ PART NO. LEG
- PEG VERSION & COLOR
- 0 : STANDARD ; BROWN
  - 1 : STANDARD ; WHITE
  - 2 : STANDARD ; BROWN
  - 3 : STANDARD ; WHITE

QUALITY SYMBOLS	GENERAL TOLERANCES (UNLESS SPECIFIED)	MM ONLY	INCH	DATE	DATE
▶=0	4 PLACES ±	±	±	TED CHEN	1996/09/17
◁=0	3 PLACES ±	±	±	CHECKED BY	DATE
	2 PLACES ±	±	±	WILSON CHANG	1996/09/17
	1 PLACE ±	±	±	APPROVED BY	DATE
	ANGULAR ± 3 °	±	±	MEGA LIN	1996/09/17

REV	DESCRIPTION
G	DRWN:ALLIN 2006/06/26
	CHKD: 2006/06/27
	APPR:WMSCHANG 2006/06/30
	EWR 2006-0035
	EC NO: SH2006-0520

molex DOCUMENT

SDA SEE NOTES

THIS DRAWING CONTAINS INFORMATION INCORPORATED AND SHOULD

RECOMMENDED CONNECTOR MOUNTING HOLE PATTERN

3 4 5 6 7 8 9

## Looking for pricing, stock, or lifecycle information?

Click below to explore more details on WIN SOURCE:

 [View 891776030 on WIN SOURCE](#)

 [Molex, LLC Information](#)

## Optimize Your Supply Chain with WIN SOURCE Solutions

-  Global Sourcing Solution
-  Obsolete Management
-  Cost Control Management
-  Shortage Management
-  Alternative Solution
-  Excess Inventory Management