



THE DATASHEET OF
877050021

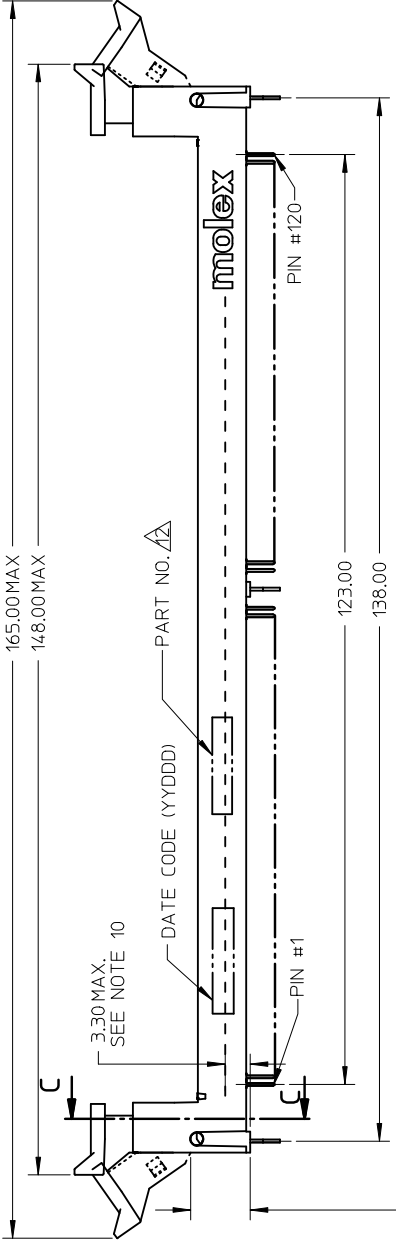


NOTES:

1. MATERIALS

- HOUSING - HIGH TEMP. NYLON
- COLOR: BLACK
- EJECTOR - HIGH TEMP. NYLON
- COLOR: SEE TABLE

- TERMINAL - COPPER ALLY
- 2. PLATING - SEE TABLE IN DRAWING
- 3. CARD SLOT ACCEPTS 127 (MEASURED OVER P.C. PAINT)
- 4. RECOMMENDED MODULE LAYOUT
- 5. REFER TO PRODUCT SPECIFICATIONS.
- 6. PRODUCT SHALL BE PACKAGED AS SHOWN
- 7. PRODUCT SHALL HAVE DATA MARKING AS SHOWN
- 8. KEEP OUT AREA IS THE AREA
- 9. REFER TO CRITICAL JEDEC PER SO-001.
- 10. DIMM MODULE SEATING PLACES
- 11. CONTACT MOLEX FOR AVAILABILITY

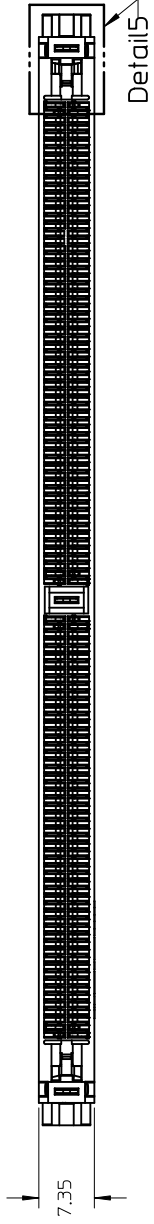


5.00 MIN
LATCH KEEP
OUT AREA

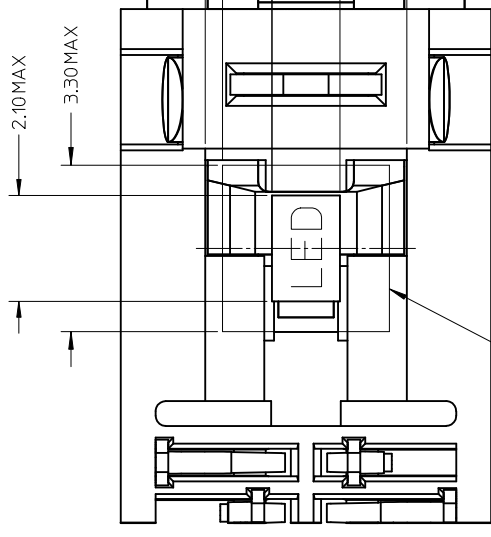
QUALITY SYMBOLS F=0 F=0 F=0		GENERAL TOLERANCES (UNLESS SPECIFIED) mm ± --- ± --- INCH ± --- ± ---		DIMENSION STYLE MM ONLY	
DESCRIPTION APPR:SHLEN 2011/07/14 CHKD:CGTAN 2011/07/14 DRWN:CTEH 2009/11/16 EC NO: S2012-0025 ADDED OPTION		4 PLACES ± --- ± --- 3 PLACES ± --- ± --- 2 PLACES ± 0.20 ± --- 1 PLACE ± --- ± --- ANGULAR ± 5 °		DRAWN BY CGOH DATE 2002/05/09 CHECKED BY DS0H DATE 2002/07/22 APPROVED BY SKTOH DATE 2002/07/23 MATERIAL NO. SEE TABLE	
REV D2 FC NO: S2012-0025 APPR:SHLEN 2011/07/14 CHKD:CGTAN 2011/07/14 DRWN:CTEH 2009/11/16 ADDED OPTION		DRAFT WHERE APPLICABLE MUST REMAIN WITHIN DIMENSIONS		SIZE A3 THIS DRAWING CONTAINS INFORMATION INCORPORATED AND SHOULD BE REFERENCED TO THE DRAWING	

10 9 8 7 6 5 4 3

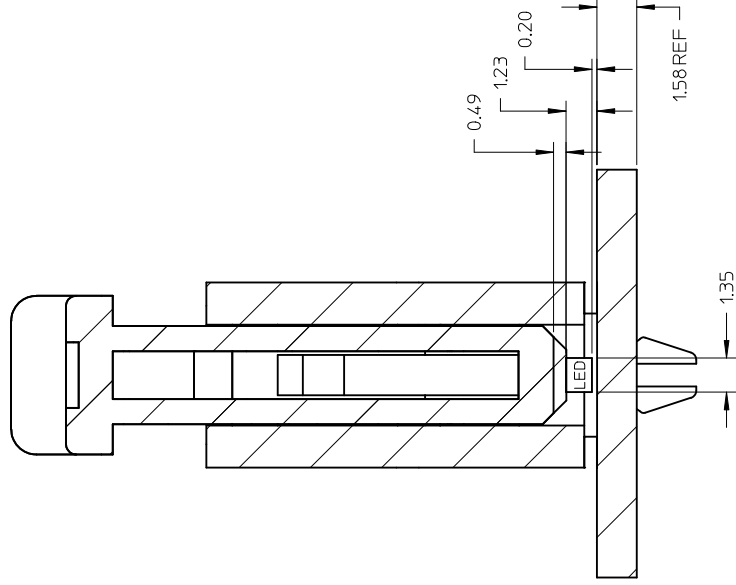
F



E



C



B

SECTION C-C

Detail 5

LED PLACEMENT AREA

A

ADD'D OPTION EC NO: S2012-0025 2009/11/16 DRWN:CTEH CHKD:GTAN 2011/07/14 APPR:SHLENI 2011/07/14	REV	D2	DESCRIPTION	
QUALITY SYMBOLS $\nabla=0$ $\nabla=0$ $\nabla=0$	GENERAL TOLERANCES (UNLESS SPECIFIED) mm INCH 4 PLACES \pm --- \pm --- 3 PLACES \pm --- \pm --- 2 PLACES \pm 0.20 \pm --- 1 PLACE \pm --- \pm --- ANGULAR \pm 5 °		DIMENSION STYLE MM ONLY DRAWN BY CGOH DATE 2002/05/09 CHECKED BY DS0H DATE 2002/07/22 APPROVED BY SKTOH DATE 2002/07/23 MATERIAL NO. SEE TABLE SIZE A3 THIS DRAWING CONTAINS INCORPORATED AND SHOULD	
SCALING NT TITLE		DIMENSION STYLE MM ONLY DRAWN BY CGOH DATE 2002/05/09 CHECKED BY DS0H DATE 2002/07/22 APPROVED BY SKTOH DATE 2002/07/23 MATERIAL NO. SEE TABLE SIZE A3 THIS DRAWING CONTAINS INCORPORATED AND SHOULD		DOCUMENT NO. mole

td_frame_A3_P_AM_T
 Rev. F 2009/06/18

F

Rev. F 2009/06/18

9

8

7

6

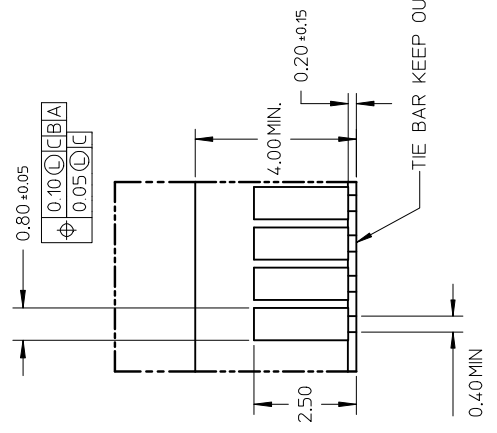
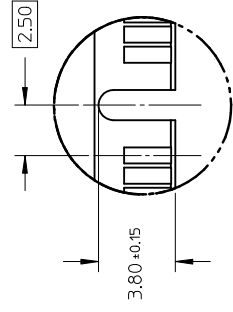
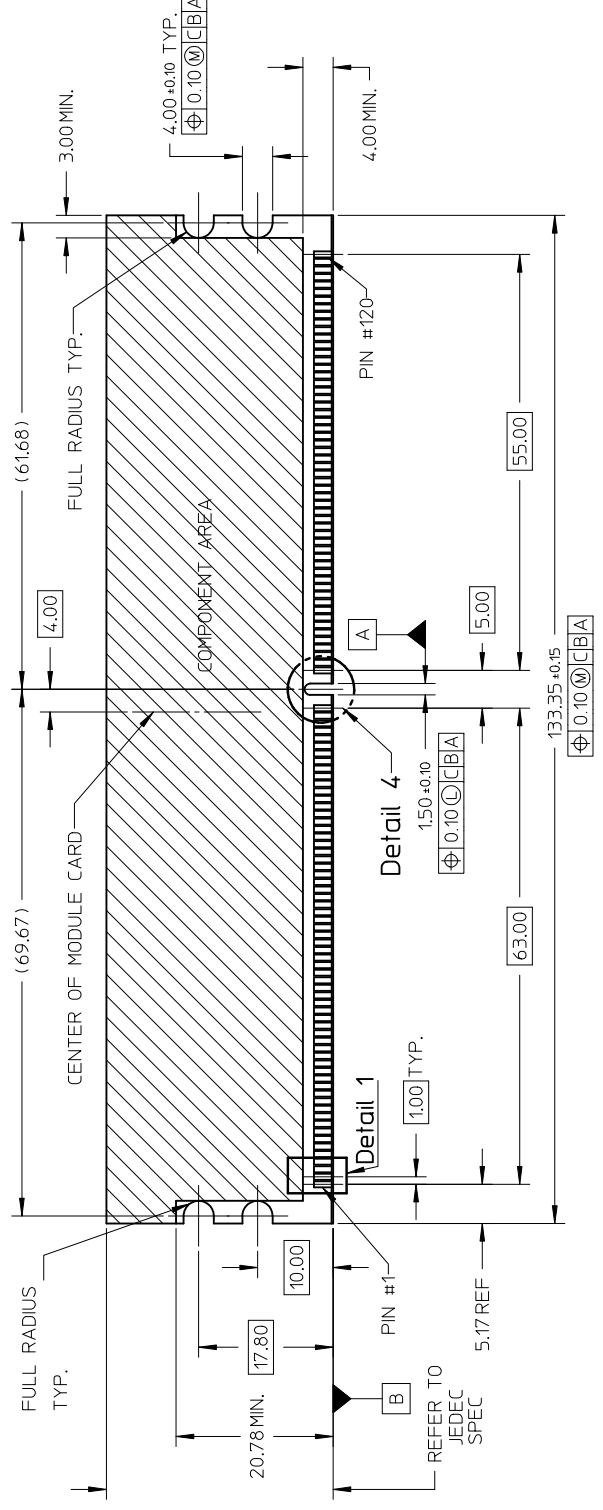
5

4

3

10 9 8 7 6 5 4 3

RECOMMENDED MODULE LAYOUT



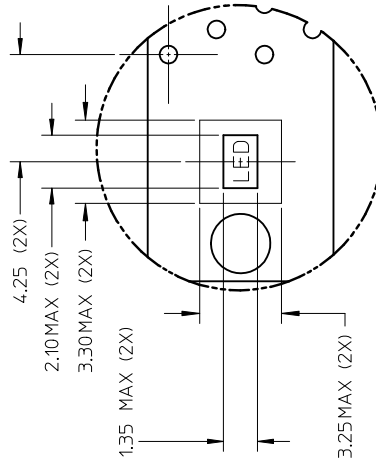
NOTES:
 1. MODULE CARD USED FOR TEST

ADDED OPTION	FC NO: S2012-0025	DRW:CTEH	2009/11/16	REV	D2										
CHD:CGTAN	2011/07/14	APR:SHLEN	2011/07/14	DESCRIPTION											
QUALITY SYMBOLS	$\nabla = 0$ $\nabla = 0$ $\nabla = 0$														
GENERAL TOLERANCES (UNLESS SPECIFIED)	<table border="1"> <tr> <td>mm</td> <td>INCH</td> </tr> <tr> <td>4 PLACES ±---</td> <td>±---</td> </tr> <tr> <td>3 PLACES ±---</td> <td>±---</td> </tr> <tr> <td>2 PLACES ±0.20</td> <td>±---</td> </tr> <tr> <td>1 PLACE ±---</td> <td>±---</td> </tr> </table> ANGULAR ± 5 °					mm	INCH	4 PLACES ±---	±---	3 PLACES ±---	±---	2 PLACES ±0.20	±---	1 PLACE ±---	±---
mm	INCH														
4 PLACES ±---	±---														
3 PLACES ±---	±---														
2 PLACES ±0.20	±---														
1 PLACE ±---	±---														
DRAFT WHERE APPLICABLE MUST REMAIN WITHIN DIMENSIONS	SEE TABLE														
SIZE THIS DRAWING CONTAINS	A3														
INCORPORATED AND SHOULD	MATERIAL NO. SKTOH 2002/07/23														
	APPROVED BY DATE 2002/07/22														
	CHECKED BY DATE 2002/05/09														
	DRAWN BY DATE 2002/05/09														
MM ONLY	DIMENSION STYLE														
NT	TITLE														

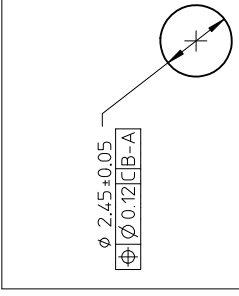
td_frame_A3_P_AM_T
 Rev. F 2009/06/18

10 9 8 7 6 5 4 3

10 9 8 7 6 5 4 3



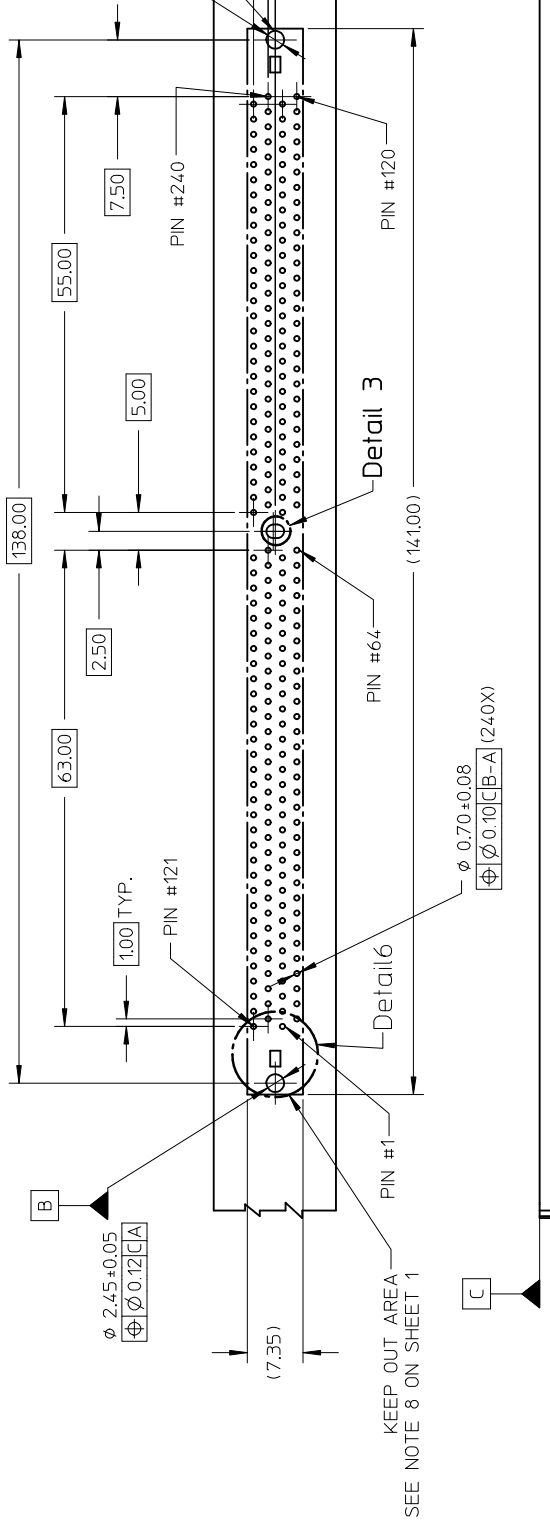
Detail 6



OPTION 1
CENTER ROUND HOLE

(SEE RECOMMENDED THICKNESS IN TABLE)
RECOMMENDED PCB LAYOUT
CONNECTOR SIDE

Detail



KEEP OUT AREA
SEE NOTE 8 ON SHEET 1

F

E

D

C

B

A

QUALITY SYMBOLS	GENERAL TOLERANCES (UNLESS SPECIFIED)	DIMENSION STYLE	SCALE										
$\nabla = 0$ $\nabla = 0$ $\nabla = 0$	<table border="1"> <tr> <th>MM</th> <th>INCH</th> </tr> <tr> <td>4 PLACES ± ---</td> <td>± ---</td> </tr> <tr> <td>3 PLACES ± ---</td> <td>± ---</td> </tr> <tr> <td>2 PLACES ± 0.20</td> <td>± ---</td> </tr> <tr> <td>1 PLACE ± ---</td> <td>± ---</td> </tr> </table>	MM	INCH	4 PLACES ± ---	± ---	3 PLACES ± ---	± ---	2 PLACES ± 0.20	± ---	1 PLACE ± ---	± ---	MM ONLY	NT
MM	INCH												
4 PLACES ± ---	± ---												
3 PLACES ± ---	± ---												
2 PLACES ± 0.20	± ---												
1 PLACE ± ---	± ---												
DESCRIPTION	DRAFT WHERE APPLICABLE MUST REMAIN WITHIN DIMENSIONS	DRAWN BY	TITLE										
APPR: S/HE/NI 2011/07/14 CH/D: C/G/TAN 2011/07/14 DRW/C: C/TEH 2009/11/16 EC NO: S2012-0025 ADDED OPTION D2	SEE TABLE	CGOH											
REV	SIZE	CHECKED BY	DATE										
	A3	DSOH	2002/05/09										
	THIS DRAWING CONTAINS INFORMATION INCORPORATED AND SHOULD BE INCORPORATED AND SHOULD	APPROVED BY	DATE										
		SKTOH	2002/07/22										
		MATERIAL NO.	2002/07/23										
		DOCUMENT	male										

10 9 8 7 6 5 4 3

PART NO.	KEY POS.	DIM 'P'	RECOMMENDED PCB THICKNESS	PLATING OPTION	LATCH COLOR	LUBRICATION
87705-0021	CENTER (1.8V)	2.67	1.57	0.38µM / 15 µIN MIN. GOLD ON CONTACT, 2.54µM/ 100µIN MIN. TIN ON SOLDERTAILS, 1.27µM/ 50µIN MIN. NICKEL UNDERPLATE	NATURAL	NO
87705-1021		3.18	2.36			
87705-1053		3.66				
87705-0031	CENTER (1.8V)	2.67	1.57	0.03µM / 1 µIN MIN. GOLD ON CONTACT, 2.54µM/ 100µIN MIN. TIN ON SOLDERTAILS, 1.27µM/ 50µIN MIN. NICKEL UNDERPLATE	NATURAL	NO
87705-1031		3.18	2.36			
87705-0051		2.67	1.57			
87705-1051		3.18	2.36	0.76µM / 30 µIN MIN. GOLD ON CONTACT, 2.54µM/ 100µIN MIN. TIN ON SOLDERTAILS, 1.27µM/ 50µIN MIN. NICKEL UNDERPLATE		YES
87705-3061						

ADDED OPTION EC NO: S2012-0025 2009/11/16	D2	APPR:SHLEN 2011/07/14	DESCRIPTION	QUALITY SYMBOLS	GENERAL TOLERANCES (UNLESS SPECIFIED)	DIMENSION STYLE	SCALE
		CHKD:GTAN 2011/07/14					NT
REV			4 PLACES ± 0.20	4 PLACES ± 0.008	MM ONLY	DATE	TITLE
DRAFT WHERE APPLICABLE MUST REMAIN WITHIN DIMENSIONS			3 PLACES ± 0.20	3 PLACES ± 0.008	MM ONLY	DATE	
SEE TABLE			1 PLACE ± 0.20	1 PLACE ± 0.008	MM ONLY	DATE	
MATERIAL NO. SK10H			ANGULAR ± 5 °		MM ONLY	DATE	
SIZE THIS DRAWING CONTAINS INCORPORATED AND SHOULD BE INCORPORATED AND SHOULD BE			SEE TABLE		MM ONLY	DATE	
A3			A3		MM ONLY	DATE	

PART NO.	KEY POS.	DIM 'P'	RECOMMENDED PCB THICKNESS	PLATING OPTION	LA CO
87705-5051	CENTER (1.8V)	2.67	1.57	0.76µM / 30 µIN MIN. GOLD ON CONTACT, 2.54µM/ 100µIN MIN. TIN ON SOLDER TAILS, 1.27µM/ 50µIN MIN. NICKEL UNDERPLATE	C
87705-5151		3.18	2.36		
87705-6151		3.18	2.36		
87705-9101		2.67	1.57	0.38µM / 15 µIN MIN. GOLD ON CONTACT, 2.54µM/ 100µIN MIN. TIN ON SOLDER TAILS, 1.27µM/ 50µIN MIN. NICKEL UNDERPLATE	B

ADD'D OPTION EC NO: S2012-0025 DRWN:CTEH 2009/11/16 CHKD:GTAN 2011/07/14 APPR:SHLEN 2011/07/14 DESCRIPTION REV	QUALITY SYMBOLS	GENERAL TOLERANCES (UNLESS SPECIFIED)	DIMENSION STYLE	SCALE	
		MM INCH	MM ONLY	NT	
		4 PLACES ± --- ± ---	DRAWN BY CGOH	DATE 2002/05/09	TITLE
		3 PLACES ± --- ± ---	CHECKED BY DS0H	DATE 2002/07/22	
		2 PLACES ± 0.20 ± ---	APPROVED BY SKTOH	DATE 2002/07/23	
	1 PLACE ± --- ± ---	ANGULAR ± 5 °	MATERIAL NO.	DOCUMENT	
		DRAFT WHERE APPLICABLE MUST REMAIN WITHIN DIMENSIONS	SEE TABLE		
			SIZE THIS DRAWING CONTAINS		
			A3	INCORPORATED AND SHOULD	

A

B

C

D

E

F

Looking for pricing, stock, or lifecycle information?

Click below to explore more details on WIN SOURCE:

 [View 877050021 on WIN SOURCE](#)

 [Molex, LLC Information](#)

Optimize Your Supply Chain with WIN SOURCE Solutions

-  Global Sourcing Solution
-  Obsolete Management
-  Cost Control Management
-  Shortage Management
-  Alternative Solution
-  Excess Inventory Management